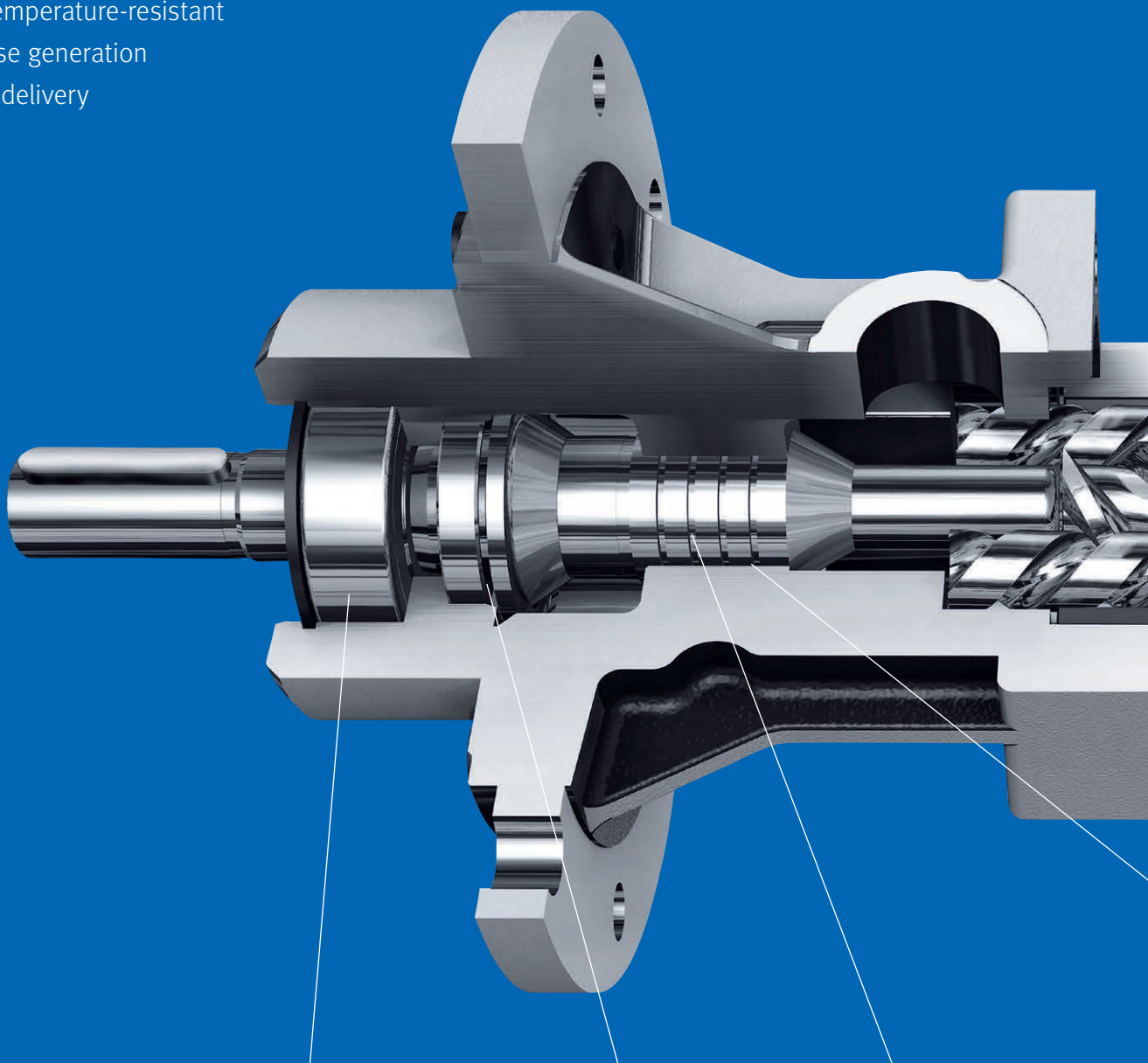


Advantages

- Long service life thanks to high resistance to wear
- Low pulsation
- Extremely temperature-resistant
- Minimal noise generation
- Gentle fluid delivery



Features

Exterior main bearing
for greater longevity

Installation of
various shaft seal
variants possible

Labyrinth for effective
pressure reduction and
high efficiency

Equipment

The KTSV screw pump is available in a submersible version for vertical installation (generally in containers) and in a model with feet for horizontal dry set-up.

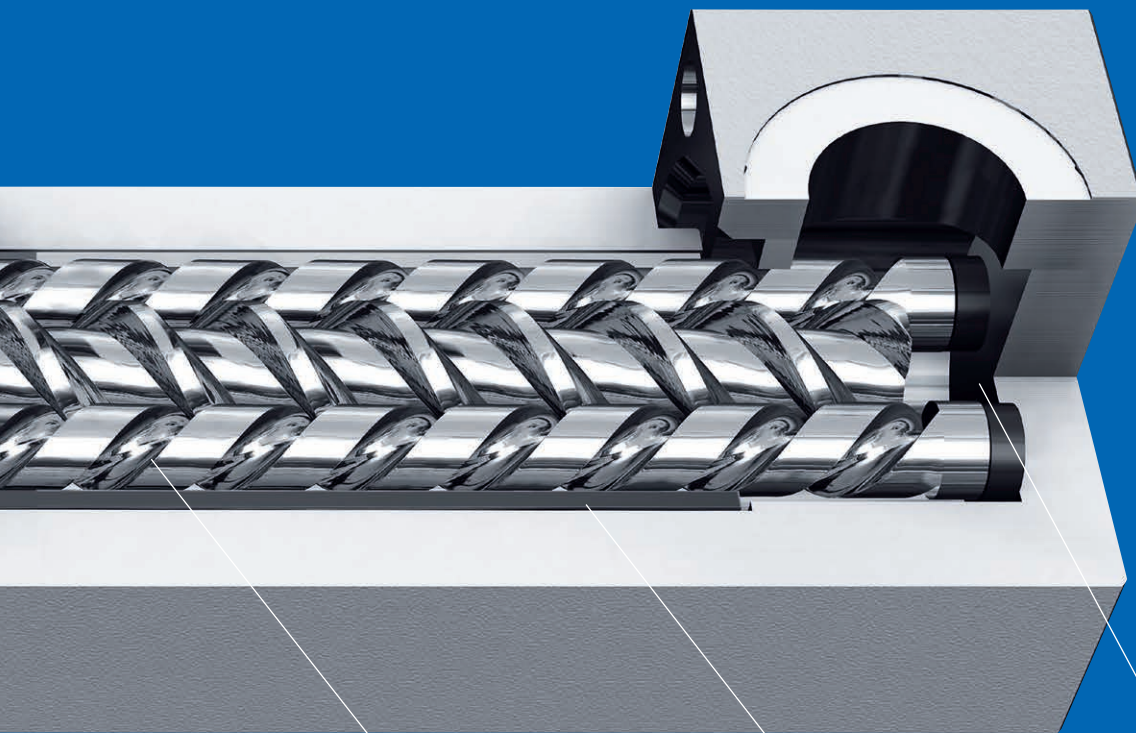
Type code

Configuration KTSV 25-50
Model
Spindle pitch

Layout

Type KTSV screw pumps by KNOLL are self-priming positive displacement pumps suitable for lubricating and non-abrasive materials. The pump has three primary components:

1. Suction housing, 2. Bearing housing with a drive spindle and two concurrently rotating running spindles,
3. Pressure housing with throttling point, sealed shaft bushing and external main bearing. The bearing housing consists of two steel-embedded ceramic shells.



Optional ceramic
piston bushing
at the throttle valve
opening

Screw spindles
precision-manufactured
from long-lasting
specially-treated
tool steel

Precision manufactu-
red bearing housing
made of nearly
wear-free ceramic

Wear resistant
axial thrust
compensation

Specifications

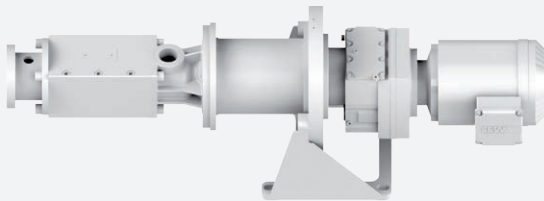
Delivery rate:	1 – 900 l/min
Pressure increase:	1 – 200 bar
Inlet pressure:	max. 20 bar

Conveying and dosing tasks in a wide variety of operating conditions

Application examples

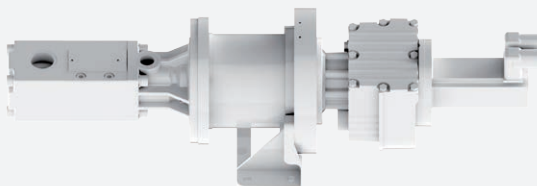
Pump with follower plate for drum unloading KTSV 50-100

Medium: Hardener for epoxide resin
Delivery rate: 1.5 – 3.5 l/min
Delivery pressure: 80 bar
Viscosity: 600,000 mPas



Dosing pump for thickener application KTSV 20-30

Medium: Surface seal
Delivery rate: 0.75 l/min
Delivery pressure: 70 bar
Viscosity: 130,000 mPas



Conveyor pump in machine washing system KTSV 32-46

Medium: Alkaline suds 1%
Delivery rate: 75 l/min
Delivery pressure: 30 bar
Viscosity: 1 mPas

