

AES Series Inductive Proximity Sensors

Miniature M8 (8 mm) stainless steel – DC



- Sixteen models available
- NPN or PNP, NO or NC
- Complete overload protection
- IP67 rated
- Stainless steel construction

- Yellow output LED 360 degree visible
- Lifetime warranty



AES Series M8 DC Inductive Prox Selection Chart

Part Number	Price	Sensing Range	Housing	Output State	Logic	Connection	Wiring	Dimensions
Standard Distance								
AES-AN-1A	\$17.00	1.5 mm (0.06 in)	Shielded	NO output	NPN	2 m (6.5') axial cable	Diagram 1	Figure 1
AES-AP-1A	\$17.00				PNP	2 m (6.5') axial cable	Diagram 2	Figure 1
AES-AN-1F	\$18.50				NPN	M8 connector	Diagram 3	Figure 2
AES-AP-1F	\$18.50				PNP	M8 connector	Diagram 4	Figure 2
AES-CN-1A	\$17.00			NC output	NPN	2 m (6.5') axial cable	Diagram 1	Figure 1
AES-CP-1A	\$17.00				PNP	2 m (6.5') axial cable	Diagram 2	Figure 1
AES-CN-1F	\$18.50				NPN	M8 connector	Diagram 3	Figure 2
AES-CP-1F	\$18.50				PNP	M8 connector	Diagram 4	Figure 2
Extended Distance								
AES-AN-3A	\$21.00	2 mm (0.08 in)	Shielded	NO output	NPN	2 m (6.5') axial cable	Diagram 1	Figure 1
AES-AP-3A	\$21.00				PNP	2 m (6.5') axial cable	Diagram 2	Figure 1
AES-AN-3F	\$22.00				NPN	M8 connector	Diagram 3	Figure 2
AES-AP-3F	\$22.00				PNP	M8 connector	Diagram 4	Figure 2
AES-CN-3A	\$21.00			NC output	NPN	2 m (6.5') axial cable	Diagram 1	Figure 1
AES-CP-3A	\$21.00				PNP	2 m (6.5') axial cable	Diagram 2	Figure 1
AES-CN-3F	\$22.00				NPN	M8 connector	Diagram 3	Figure 2
AES-CP-3F	\$22.00				PNP	M8 connector	Diagram 4	Figure 2

Dimensions

mm [inches]

Figure 1

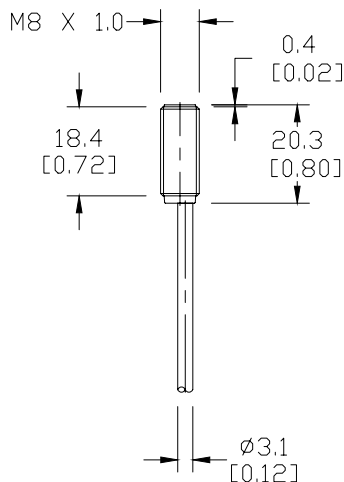
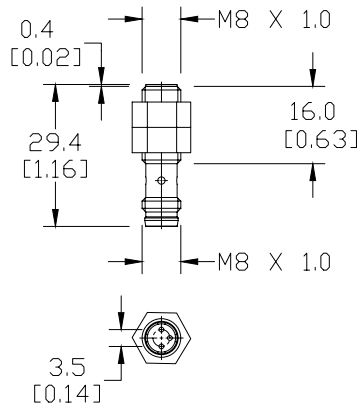


Figure 2



AES Series Inductive Proximity Sensors

AES Series Specifications		
	Standard Distance	Extended Distance
Mounting Type	Shielded	
Nominal Sensing Distance	1.5 mm (0.06 in)	2 mm (0.078 in)
Operating Distance	NA	
Material Correction Factors	See the Material influence table	
Output Type	NPN or PNP/NO or NC/3-wire	
Operating Voltage	10 to 30 VDC	
No-load Supply Current	≤10mA	
Operating (Load) Current	≤100mA	
Off-state (Leakage) Current	≤10 µA	
Voltage Drop	≤1.5 V	
Switching Frequency	7 kHz	
Differential Travel (% of Nominal Distance)	≤10%	
Repeat Accuracy	≤5%	
Ripple	≤10%	
Time Delay Before Availability (tv)	≤50 ms	
Reverse Polarity Protection	Yes	
Short-Circuit Protection	Yes (auto-reset)	
Operating Temperature	-25° to 70°C (-13° to 158° F)	
Protection Degree (DIN 40050)	IP67	
Indication/Switch Status	Yellow output (on energized)	
Housing Material	Stainless Steel	
Sensing Face Material	Polybutylene Terephthalate	
Shock/Vibration	See Proximity Sensor Terminology	
Tightening Torque	4Nm (2.95 lb-ft)	
Weight	30g (1.06 oz) (cable version) 4g (0.14 oz) (M8 connector)	
Connection	2m PUR Cable or M8 Connector	
Agency Approvals	CE cULus E187310	

Wiring diagrams

Diagram 1

NPN Cable

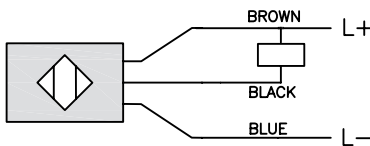
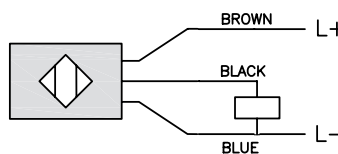


Diagram 2

PNP Cable



Connector

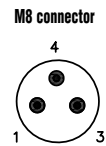


Diagram 3

NPN M8 Connector

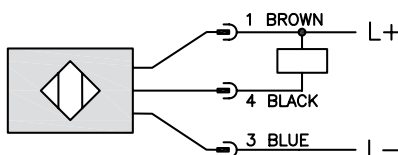
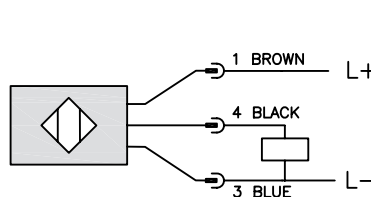


Diagram 4

PNP M8 Connector



Accessories for 8mm Sensors

Axial Mounting Bracket

Mounting bracket, axial, zinc-plated steel. For use with 8mm sensors. Has two mounting holes (use 3 mm screws) and allows the rotation of an optical axis for axial sensors. Hexagonal nuts not included.

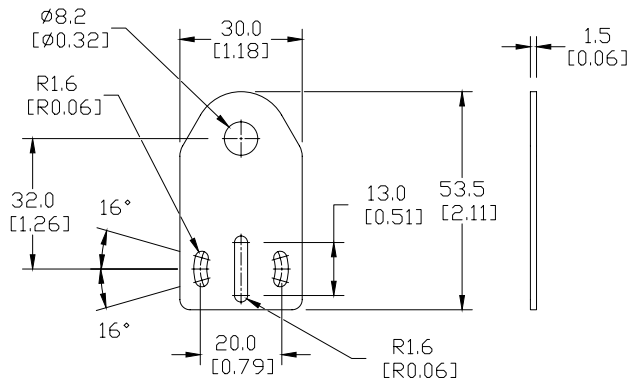


ST08A

Accessories for 8mm Sensors			
Part Number	Price	Description	Weight [lb]
ST08A	\$1.00	Mounting bracket, axial, zinc-plated steel. For use with 8mm sensors. 1/pk.	0.04

Dimensions

mm [inches]



Right-angle Mounting Bracket

Mounting bracket, right-angle, zinc-plated steel. For use with 8mm sensors. Has two mounting holes (use 3mm screws) and allows the rotation of an optical axis for right-beam-angle-adaptor sensors. Hexagonal nuts not included.

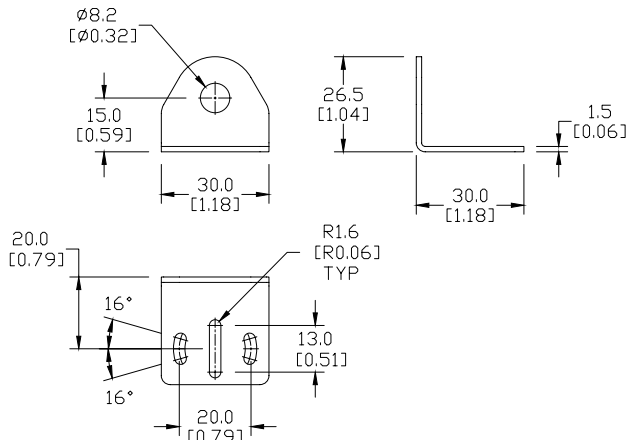


ST08C

Accessories for 8mm Sensors			
Part Number	Price	Description	Weight [lb]
ST08C	\$1.00	Mounting bracket, right angle, zinc-plated steel for 8mm sensors. 1/pk.	0.04

Dimensions

mm [inches]



Accessories for 8mm Sensors

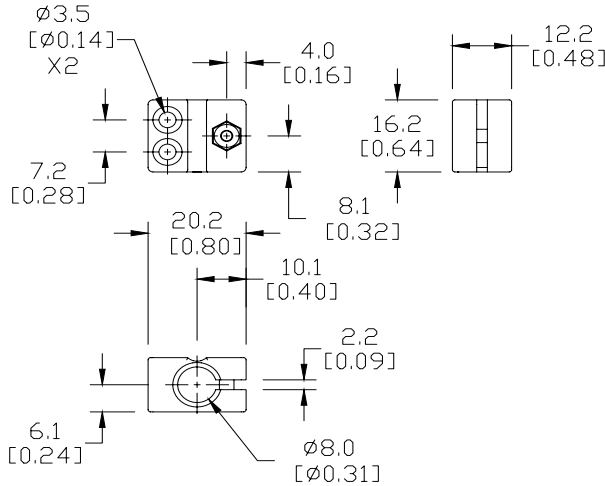
Right-angle Mounting Bracket

Mounting bracket, right-angle, plastic. For use with 8mm sensors.

Accessories for 8mm Sensors			
Part Number	Price	Description	Weight [lb]
OPT2101	\$6.50	Mounting bracket, right-angle, plastic. For use with 8mm sensors.	0.02

Dimensions

mm [inches]



OPT2101

Right-angle Swivel Mounting Systems

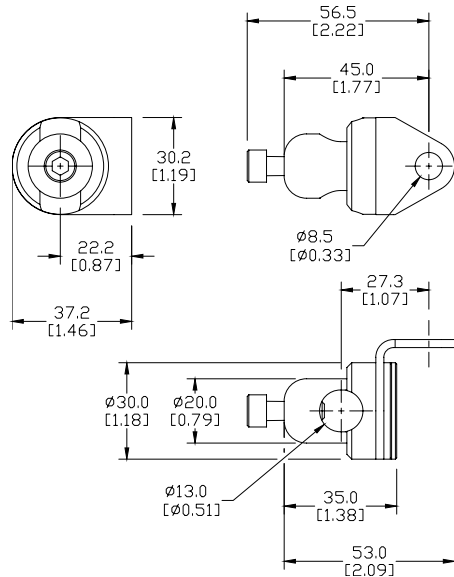
Mounting bracket, right-angle swivel, 360 degree vertical and horizontal adjustment. For use with 8mm sensors. Available in all stainless steel or with an aluminum head and stainless steel mounting plate.

Accessories for 8mm Sensors					
Part Number	Price	Description	Mounting Head	Mounting Plate	Weight [lb]
OPT2112	\$9.50	Mounting bracket, right-angle swivel, 360 vertical and horizontal adjustment, aluminum, 12mm rod mount. For use with 8mm sensors.	Aluminum	304 Stainless Steel	0.14
OPT2113	\$17.00	Mounting bracket, right-angle swivel, 360 vertical and horizontal adjustment, 304 stainless steel, 12mm rod mount. For use with 8mm sensors.	304 Stainless Steel	304 Stainless Steel	0.26

Note: 304 Stainless steel mounting rods sold separately: OPT2109 (200mm length), OPT2110 (300mm length), and OPT2111 (500mm length).

Dimensions

mm [inches]



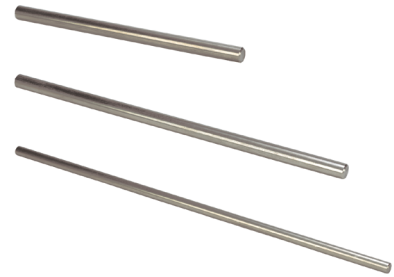
OPT2112 & OPT2113

Mounting Rods

Mounting Rods

304 Stainless steel rods for mounting swivel brackets OPT2112 - OPT2127.
Available in three lengths: 200mm, 300mm, and 500mm. 12mm diameter.

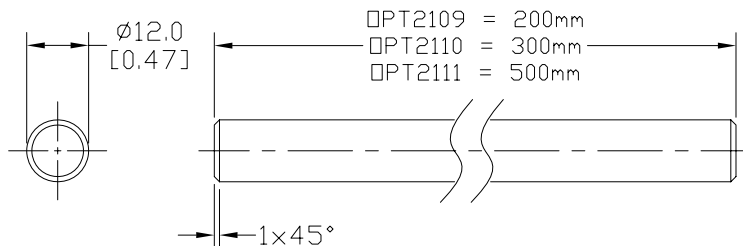
Mounting Rods for OPT2112-2127 Swivel Mounting Brackets			
Part Number	Price	Description	Weight lb (g)
OPT2109	\$10.50	Mounting rod, 12mm diameter, 200mm length, 304 stainless steel.	0.41
OPT2110	\$13.00	Mounting rod, 12mm diameter, 300mm length, 304 stainless steel.	0.60
OPT2111	\$17.00	Mounting rod, 12mm diameter, 500mm length, 304 stainless steel.	0.98



OPT2109, OPT2110, OPT2111

Dimensions

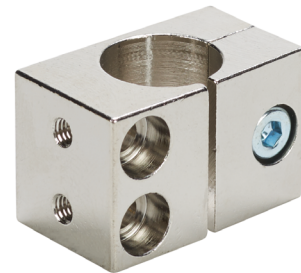
mm [inches]



Right-angle Mounting Bracket

Mounting bracket, right-angle, nickel-plated brass. For use with 12mm mounting rods OPT2109, OPT2110 & OPT2111.

Accessories for 12mm Sensors			
Part Number	Price	Description	Weight lb (g)
OPT2108	\$13.00	Mounting bracket, right-angle, nickel-plated brass. For use with 12mm mounting rods OPT2109, OPT2110 & OPT2111.	0.07 (31.8)



OPT2108

Dimensions

mm [inches]

