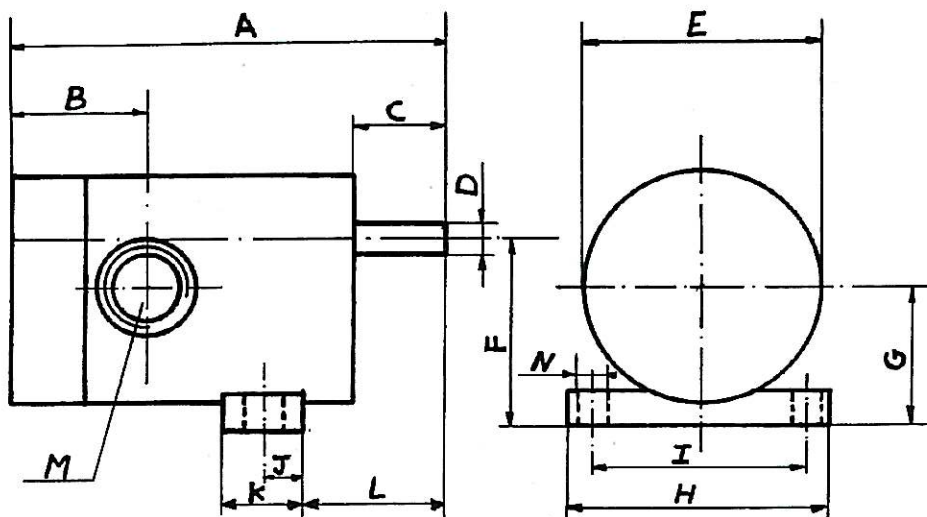
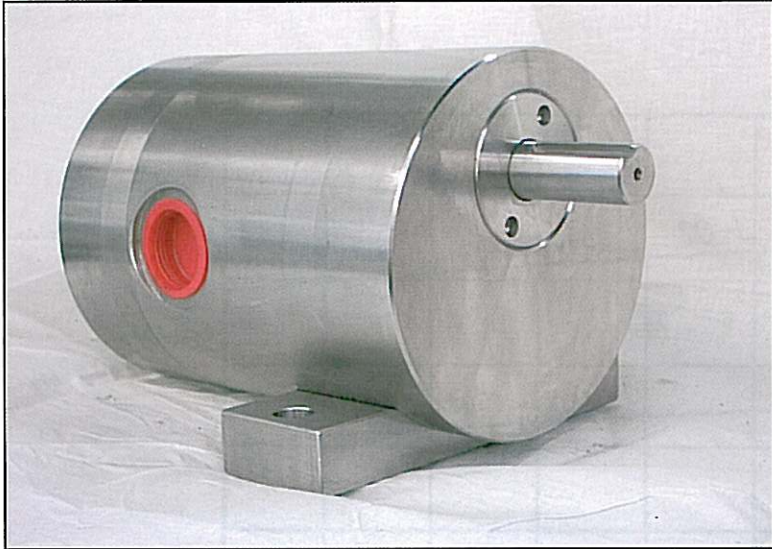
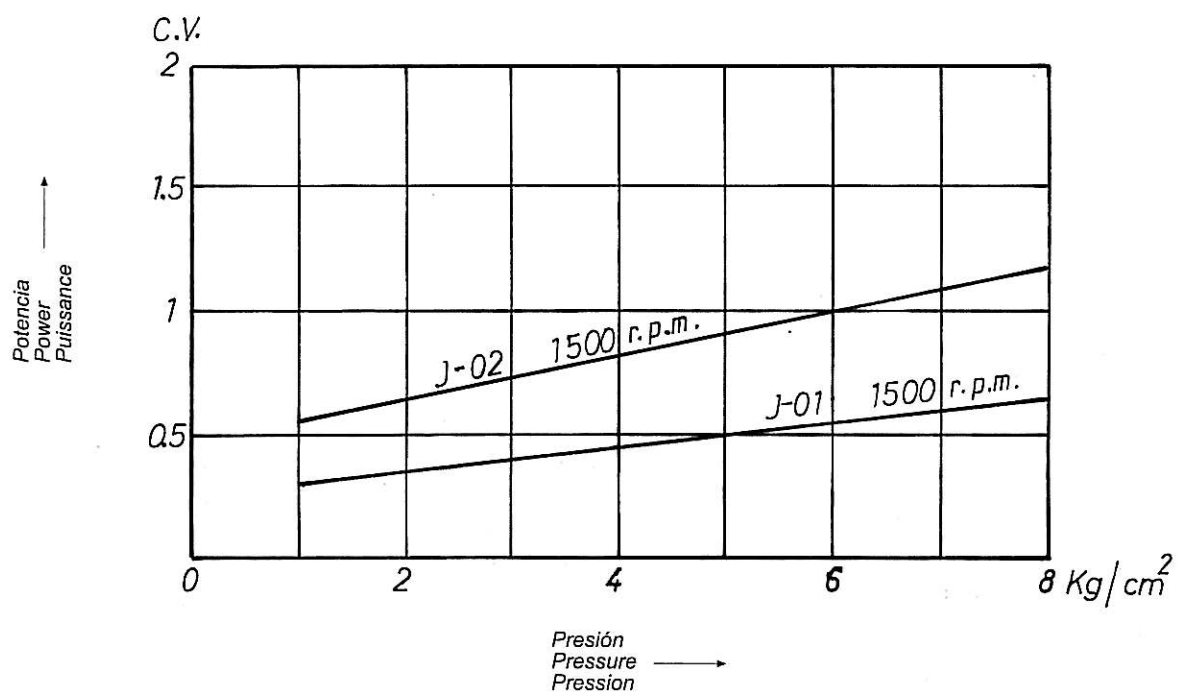
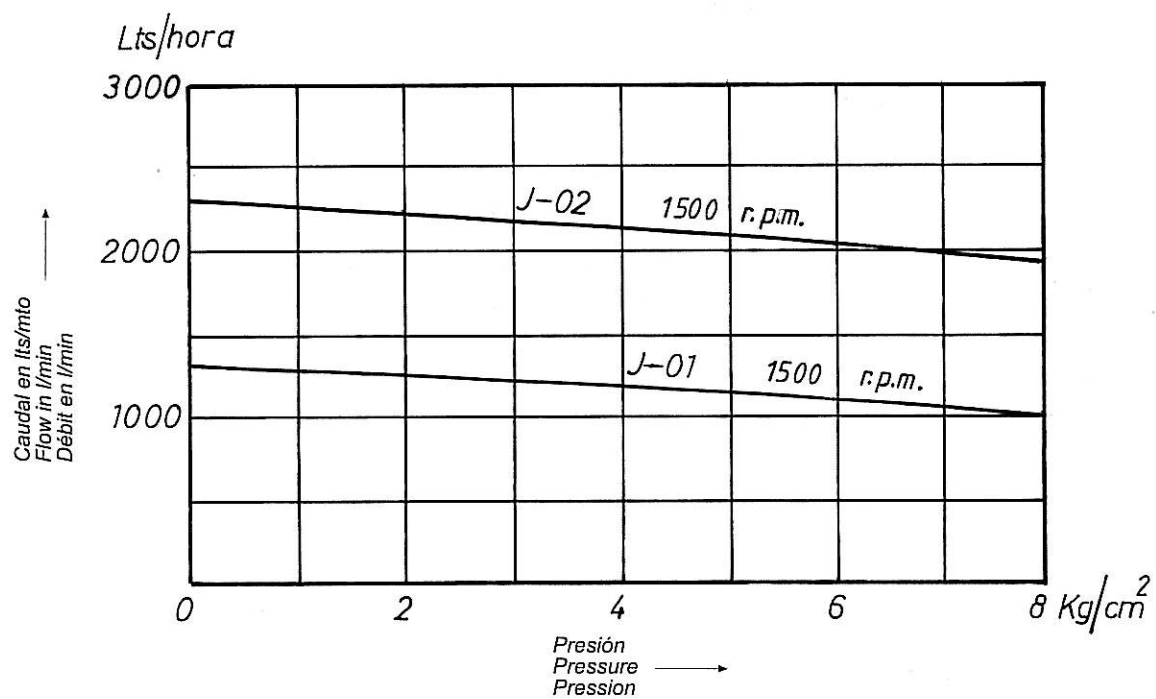
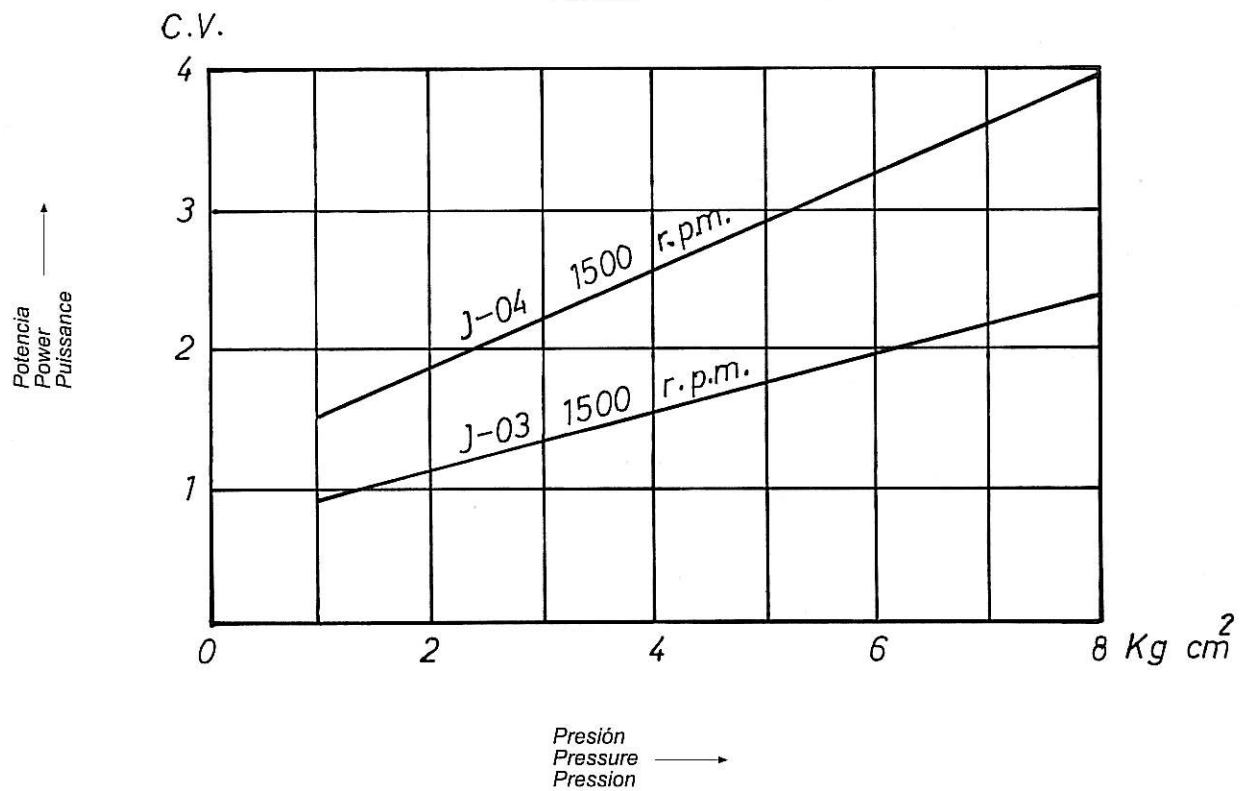
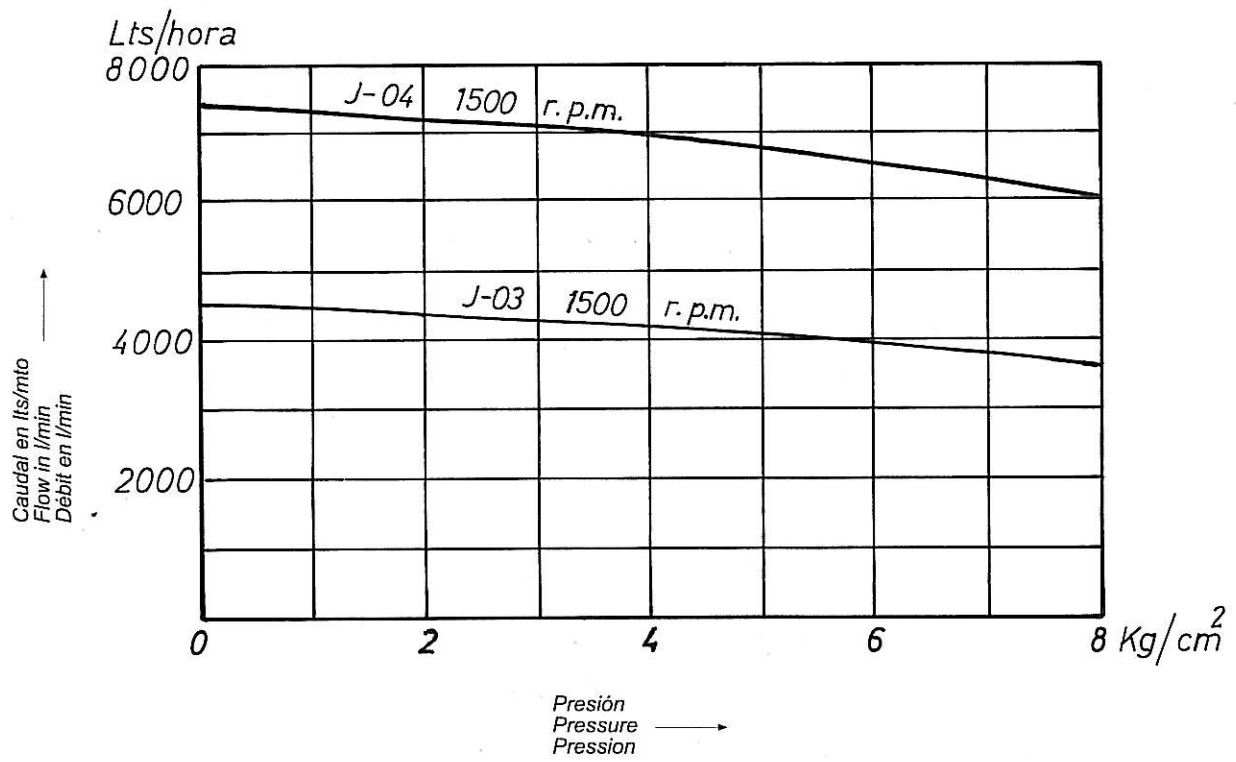


J-01/J-02/J-03/J-04

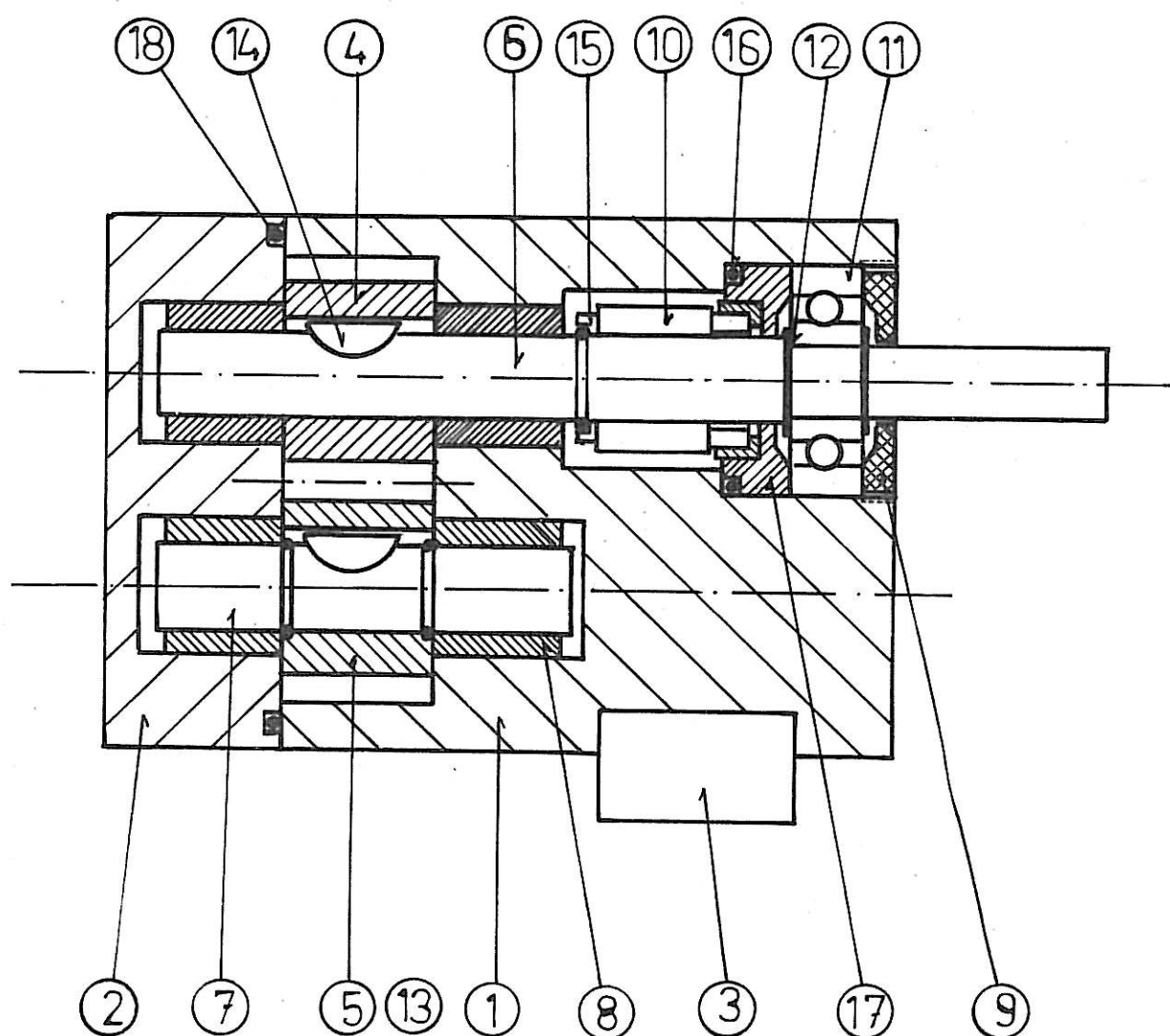


	A	B	C	D	E	F	G	H	I	J	K	L	M	N
J-01	171	48	37	15	100	80	62,5	128	104	17,5	35	59	1/2"	9,5
J-02	200	56	40	17	110	90	69,5	135	110	20	40	55	3/4"	9,5
J-03	233	70	50	20	135	100	74	165	140	25	50	73	1"	11,5
J-04	270	82	55	25	150	112	82,75	185	155	30	60	80	1 1/4"	13,5





J-01/J-02/J03/J-04



J-01/J-02/J03/J-04

NOMENCLATURA

1. Cuerpo bomba
2. Tapa bomba
3. Base soporte
4. Piñón motriz
5. Piñón secundario
6. Eje motriz
7. Eje secundario
8. Cojinete grafito
9. Tuerca bloqueo
10. Cierre mecánico
11. Rodamiento bolas
12. Anillo Seeger
13. Anillo situación piñón
14. Chaveta Woodruff
15. Anillo soporte cierre
16. Tórica
17. Anillo situación cierre
18. Tórica

LIST OF PARTS

1. Pump body
2. Pump cover
3. Supporting base
4. Drive gear
5. Driven gear
6. Driven shaft
7. Driven shaft
8. Bearing graphite
9. Lock nut
10. Mechanical seal
11. Ball bearing
12. Drive gear pin
13. Ring Seeger
14. Key Woodruff
15. Seal supporting ring
16. O-ring
17. Seal locating ring
18. O-ring

NOMENCLATURE

1. Corps
2. Cache
3. Base support
4. Pignon moteur
5. Pignon secondaire
6. Axe moteur
7. Axe secondaire
8. Coussin graphite
9. Écrou de blocage
10. Fermeture mécanique
11. Roulement à billes
12. Anneau Seeger
13. Anneau situation pignon
- 14.. Clavette Woodruff
15. Anneau appui fermeture
16. Joint tórique
17. Anneau situation fermeture
18. Joint tórique

MATERIALES

1. Inox AISI 316
2. Inox AISI 316
3. Inox AISI 316
4. PEEK
5. PEEK
6. Inox AISI 316 durcrom
7. Inox AISI 316 durcrom
8. B-513 XN/FD
9. Inox AISI 316
10. Cerámica, grafito, viton
11. Acero
12. Acero
13. Inox AISI 316
14. Inox AISI 316
15. Inox AISI 316
16. Viton
17. Inox AISI 316
18. Viton

MATERIALS

1. S.S AISI 316
2. S.S AISI 316
3. S.S AISI 316
4. PEEK
5. PEEK
6. 316 chromium plated
7. 316 chromium plated
8. B-513XN/FD
9. S.S AISI 316
10. Ceramic, graphite, viton
11. Steel
12. Steel
13. S.S AISI 316
14. S.S AISI 316
15. S.S AISI 316
16. Viton
17. S.S AISI 316
18. Viton

MATERIALES

1. Inox AISI 316
2. Inox AISI 316
3. Inox AISI 316
4. PEEK
5. PEEK
6. AISI 316 durchromé
7. AISI 316 durchromé
8. B-513XN/FD
9. Inox AISI 316
10. Ceramic, graphite, viton
11. Acier
12. Acier
13. Inox AISI 316
14. Inox AISI 316
15. Inox AISI 316
16. Viton
17. Inox AISI 316
18. Viton