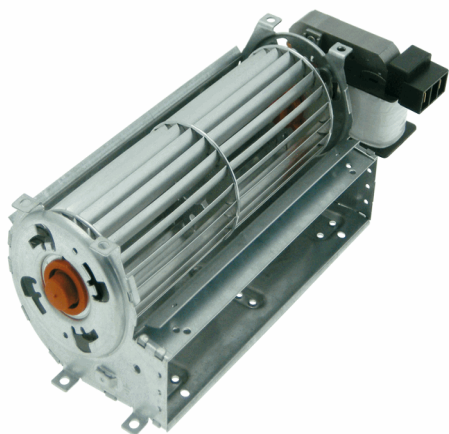


Description: **Cross Flow Fans 230Va.c.**



scroll made by zinc plated steel and wheel
made by aluminium

from 0°C to +60°C

2 male flat terminals 6.3 x 0.8 mm

male flat terminal 6.3 x 0.8 mm

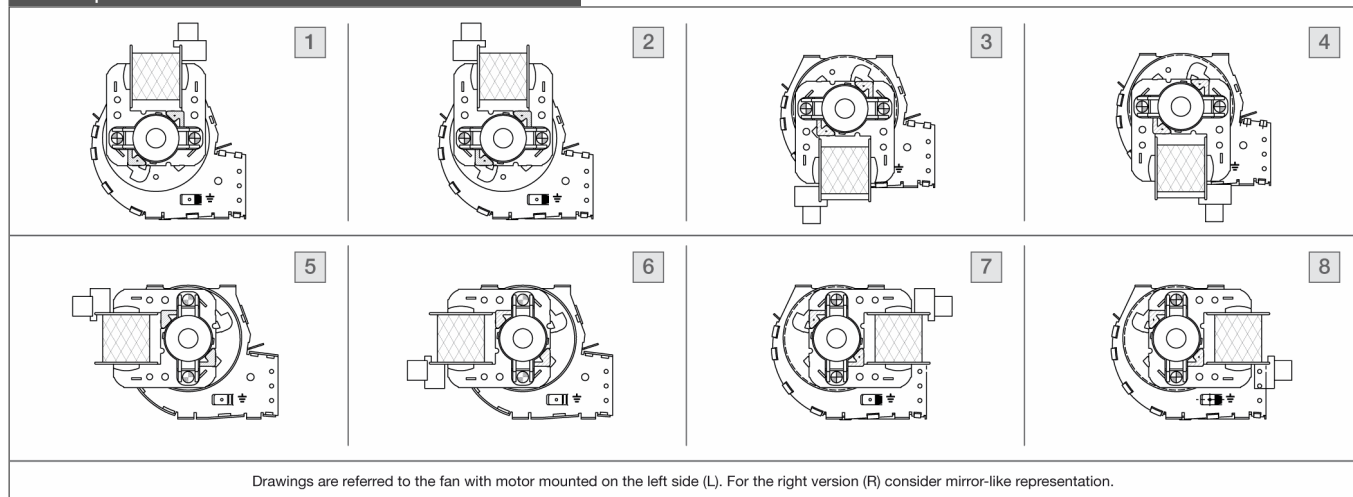
class F

sleeve

CE

* Nr. 2 holes \varnothing 3.5 only on dimensions B = 366 - 424 - 485 - 558 - 608

motor position



Model	Dimensions							Air flow and RPM Free to Air		Max Static Pressure	Watt
	A (mm)	B (mm)	C (mm)	D (mm)	E (mm)	F (mm)	G (mm)	(RPM)	(m3/h)	(Pa)	(W)
TNG23ES60X120F**-10	133	122	12	49	94	68.6	181	2,300	140	50	34
TNG23ES60X120FL5-00	133	122	12	49	94	68.6	181	1,600	85	57	19
TNG23LS60X120FL7-00	133	122	12	49	94	68.6	181	2,130	125	65	33
TNG23LS60X180FL7-00	193	182	16	53	154	128.6	245	1,500	140	60	28
TNG23MS60X240FL2-00	253	242	20	57	214	188.6	309	1,480	185	65	32
TNG23SS60X300FL7-00	313	302	40	77	274	248.6	389	2,000	365	68	58

data are indicative for Air Flow and Pressure