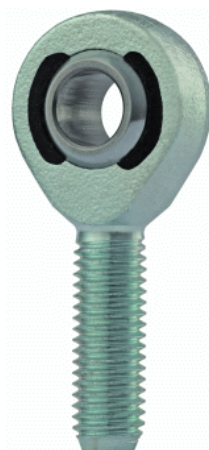
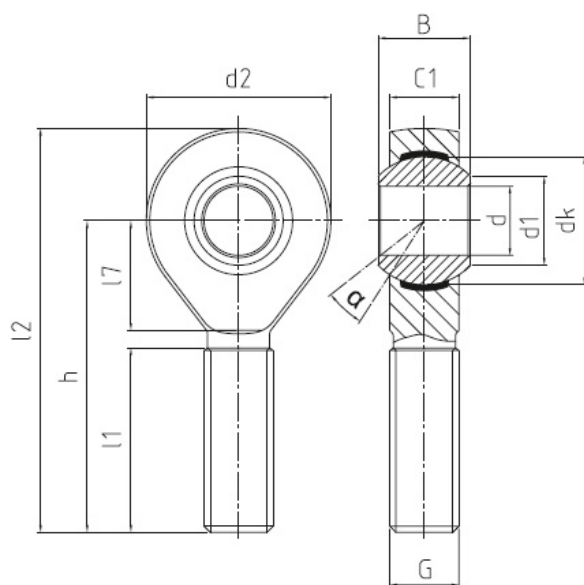


BEM 10 - 60 - 501

Dimensional drawing



right hand thread	BEM 10 - 60 -501
d (mm)	10
G	M 10
d2 (mm)	28
l2 (mm)	62
B (mm)	14
C1 (mm)	10.5
d1 (mm)	12.9
dk (mm)	19
h (mm)	48
l1 (mm)	29
l7 (mm)	15
tilt angle alpha (°)	13.5
basic load rating dyn C (kN)	10.4
basic load rating stat Co (kN)	15.4
radial clearance CN (µm)	0 - 10
weight (kg)	0.06

Product description

DURBAL heavy-duty rod ends in stainless steel with integral spherical-plain bearing, series K, male thread, according to DIN ISO 12240-4

Right hand thread: BEM_-60-501 and left hand thread: BEM_-60-502

- **Housing:** stainless steel, forged, rolled thread, surface electropolished
- **Race DURBAL-Glide:** Polyamid-PTFE-fibreglass-Compound
- **Joint ball:** stainless steel, hardened, ground, polished

Special characteristics:

- **DURBAL-Glide (race)** made of polyamide-PTFE-glass fibre compound, maintenance-free, **encapsulates penetrating foreign particles**. This fact and the **greater overlay thickness** compared to other sliding materials assure a **longer durability**.
 - All **rod end housings** are made of **forged stainless steel, extremely high loads resistant** and **surface electropolished** which ensures you a **very high corrosion resistance**.
 - **No clearance:** radial clearance 0 – 10 µm;
 - **Suitable** for use with **impact loads**;
 - For use with **small swivelling movements** and at **low speeds**.
 - **Free** from non-ferrous metals.
-