

## Control pressure switch MDR 53



- Max. cut-out pressure 16 bar
- Ample wiring room
- High switching accuracy
- 1 SPDT
- Acc. to EN 60947
- Flange = Die-cast aluminium

Order reference	Type Code	ON / OFF Rotary knob	Pressure range P <sub>OFF</sub> in bar	Flange	Weight (in g)	Part No.
MDR 53/8	MDR-53 EAA BAAA xxxA080 XAA XXX	-	0,5 - 8	G 1/2" Alu	740	213079
MDR 53/11	MDR-53 GAA BAAA xxxA110 XAA XXX*	-	6 - 11	G 1/2" Alu	780	216919
MDR 53/16	MDR-53 HAA BAAA xxxA160 XAA XXX	-	6 - 16	G 1/2" Alu	780	213086
MDR 53/25 SO3	MDR-53 NAA BAAA xxxA030 XAA XXX**	-	bis 3	G 1/2" Alu	740	213130
MDR 53/25 SO8	MDR-53 OAA BAAA xxxA080 XAA XXX**	-	bis 8	G 1/2" Alu	740	213147

\* xxx = Cut-out pressure is preset, cut-in pressure is the tightest possible pressure differential.

\*\* xxx = Cut-out pressure is preset, cut-in pressure is the tightest possible pressure differential and pressure-resistant up to 25 bar, SO-Type.

A screw plug is also supplied.

Cable glands for retrofit assembly to be ordered separately, see accessories!

Technical Data MDR 53 acc. to EN 60947	
Rated insulation voltage U <sub>i</sub>	500 V
Rated insulation voltage U <sub>e</sub> (AC 15)	250 V
Rated insulation voltage I <sub>e</sub> (AC 15)	4 A
Rated insulation voltage I <sub>the</sub> (max.)	10 A
Electrical life (AC 15) Cycles	> 2 x 10 <sup>5</sup>
Mechanical life Cycles	> 2 x 10 <sup>6</sup>
Max. electrical cycles Cycles/h	120
Max. mechanical cycles Cycles/h	1200
Bursting strength P <sub>z</sub>	> 40 bar
Protection acc. to EN 60529	IP 54

Technical Data MDR 53 acc. to EN 60947	
Permissible medium temperature Air	- 30...+ 80 °C
Permissible medium temperature Water	+ 80 °C
Conductor cross-section 1 .. flexible cable 1 x / 2 x	2,5 / 2,5mm <sup>2</sup>
Conductor cross-section 1 ... rigid cable 1 x / 2 x	2,5 / 2,5mm <sup>2</sup>

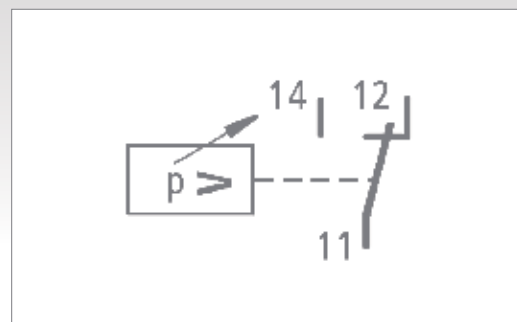
Diaphragm media resistance MDR 53
A detailed overview of diaphragm media resistance for all pressure switches can be found on page 22. Please read the information carefully.

A detailed overview of diaphragm media resistance for all pressure switches can be found on page 22.

## Dimensions / Circuit Diagrams MDR 53



Pressure switch MDR-53



# Control pressure switch MDR 53

## Accessories MDR 53

Order reference	Description	Weight (in g)	Part No.
	<b>Cable glands</b>		
WN-M20	Grommet	6	269496
VS-M20	Screw plug M20		269502
M20 Z	With strain relief, clamping range 6-12 mm	12	269533
M20 ZK	With strain relief and cable support, clamping range 6-12 mm	12	269540
M20 L	With strain relief, clamping range 10-14 mm	12	269519
M20 LK	With strain relief and cable support, clamping range 10-14 mm	12	269526
MW 5	Mounting bracket	120	230045
	<b>Cover</b>		
H5 (Cover MDR 5)	Cover without On/Off push-buttons	130	230052

## Cable glands MDR 53



WN-M 20



VS - M 20

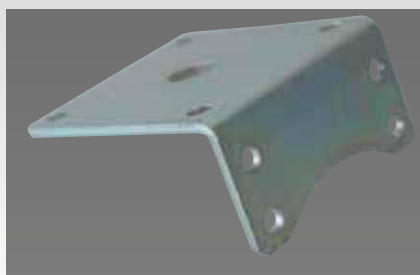


M 20 Z / M20 L



M 20 ZK / M 20 LK

## Accessories, Wall-mounting bracket / Cover MDR 53



MW 5



H5

## Pressure Diagrams MDR 53

