

6

5

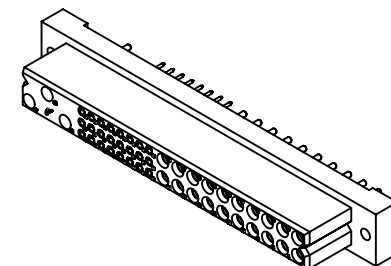
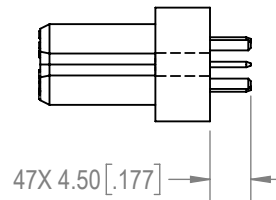
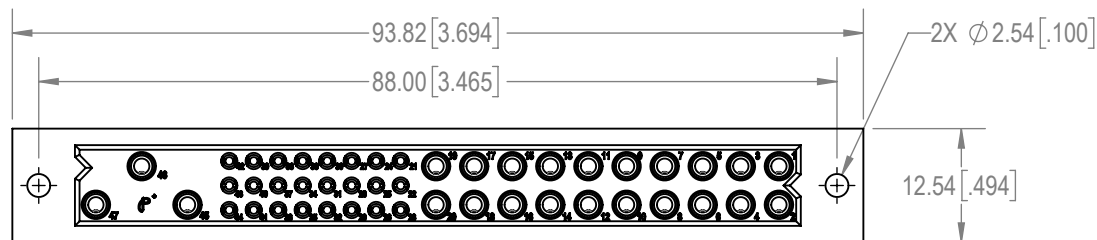
4

3

2

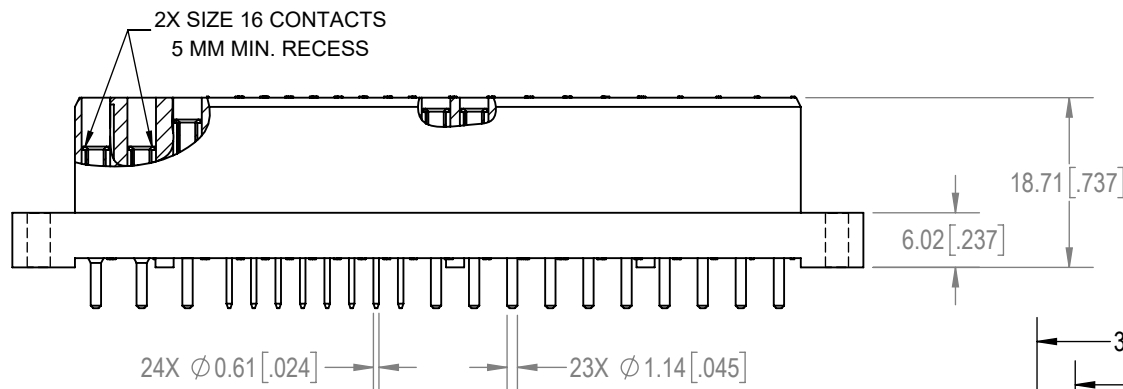
1

D



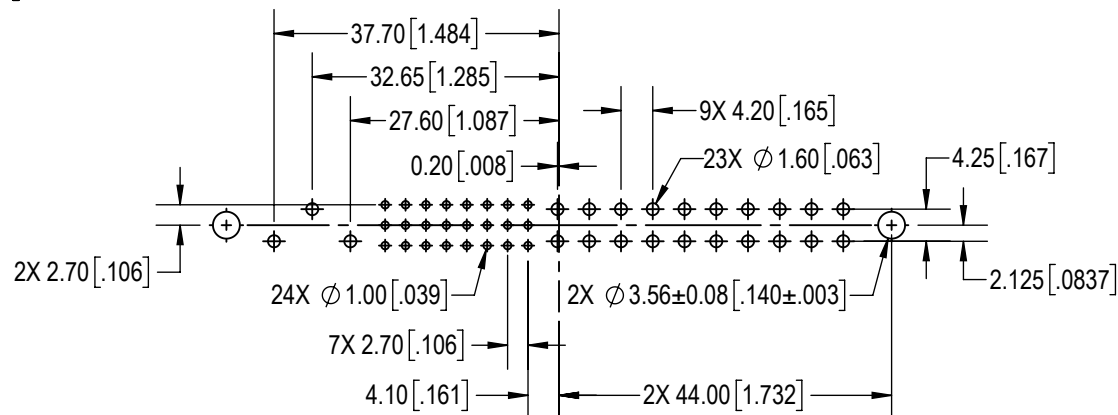
D

C



C

B





B

CONTACT HOLE PATTERN

NOTES:

- MATERIALS AND FINISH:
INSULATOR: GLASS FILLED POLYESTER, UL 94V-0, COLOR: BLUE.
SIZE 16 CONTACTS: PRECISION MACHINED HIGH CONDUCTIVITY COPPER ALLOY, GOLD FLASH OVER NICKEL ON MATING END AND TERMINATION END.
SIZE 22 CONTACTS: PRECISION MACHINED COPPER ALLOY, GOLD FLASH OVER NICKEL ON MATING END AND TERMINATION END.
- DETAILED PRODUCT, MECHANICAL AND ELECTRICAL INFORMATION IS AVAILABLE IN THE LATEST COMPACT POWER PRODUCT PUBLICATION AT CONNECTPOSITRONIC.COM.
- CONNECTORS ARE COMPLIANT TO THE CURRENT RoHS DIRECTIVE.

A

BY GJ		CHK ND		3RD ANGLE 		<p>POSITRONIC BELIEVES THE DATA ON THE DRAWING TO BE RELIABLE. THE USER EMPLOYS SUCH INFORMATION AT HIS OWN DISCRETION AND RISK.</p> <p>POSITRONIC ASSUMES NO RESPONSIBILITY FOR RESULTS OBTAINED OR DAMAGES INCURRED FROM USE OF SUCH INFORMATION IN WHOLE OR IN PART.</p>		 Positronic® CONNECTPOSITRONIC.COM		
APR PA		RELEASED DATE: 2020-12-11		SCALE NTS						
TOLERANCES					PART NUMBER PCIH47F300A1/AA		SERIES PCIH			
±0.03mm [.001 INCHES]FOR MALE CONTACT MATING DIAMETERS ±0.08mm [.003 INCHES]FOR CONTACT TERMINATION DIAMETERS ±0.13mm [.005 INCHES]FOR ALL OTHER DIAMETERS ±0.38mm [.015 INCHES]FOR ALL OTHER DIMENSIONS ±5° FOR ALL ANGLES DIMENSION ARE IN MILLIMETERS [INCHES]					PCIH47F300A1/AA					
CREATED ON: 2020-11-02					SHEET SHEET 1 OF 1		REV A			

A

6

5

4

3

2

1