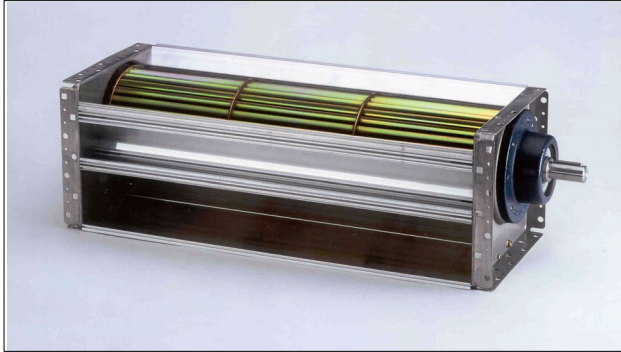


LTG Tangential Fans Type TW Impeller Diameter 6" (150 mm)

The tangential fan series TW 150 is a rigid industrial grade fan with enhanced corrosion protection and high power density.



LTG Tangential Fan Type TWR 150 (right hand drive)

Service Conditions

Gas temperatures:

-13 °F up to +250 °F (-25 °C up to +120 °C)

Ambient temperatures:

-13 °F up to +105 °F (-25 °C up to +40 °C)

Delivery Range

Type	Max. Medium Temperatures	Nominal impeller length	Casing	Impeller
TWR 150/401/N TWL 150/401/N	-13 °F to +250 °F (-25 °C to +120 °C)	16.0 inch (401 mm)	marine grade aluminum	galvanized steel
TWR 150/601/N TWL 150/601/N		23.5 inch (601 mm)		
TWR 150/864/N TWL 150/864/N		34.0 inch (864 mm)		
TWR 150/1064/N TWL 150/1064/N		42.0 inch (1064 mm)		
TWR 150/1264/N TWL 150/1264/N		50.0 inch (1264 mm)		

TWR = right hand drive

TWL = left hand drive

Specification and design features

Tangential fan with shaft end on the drive side and feather key.

Rigid bolted, corrosion proof casing of marine grade aluminum. Impeller of galvanized sheet steel.

The impeller is both sides bedded in self-aligning ball bearings. Bearing design life is 25 000 hours.

The counter-side bearing is vibration dampened. Both bearings are maintenance free.

Recommended V-belt pulley:

profile SPA 0.49 inch (12.5 mm), dw = 6.3 inch (160 mm).

The maximum rated power transmission for the pulley is 12 hp.

Intake and discharge openings have sealing planes and plug in slots to connect exactly to ducts and appliances. The complete fan (including bearing clearance etc.) is balanced to grade Q 6.3 according to VDI 2060.

LTG Tangential Fans Type TW

Impeller Diameter 6" (150 mm)

Position of the fan

Any arrangement is possible.

Installation and Start Up

Fix the fans without any distortion to a plane base frame.
For fixation of the fan use only the bolt holes provided in the side elements.

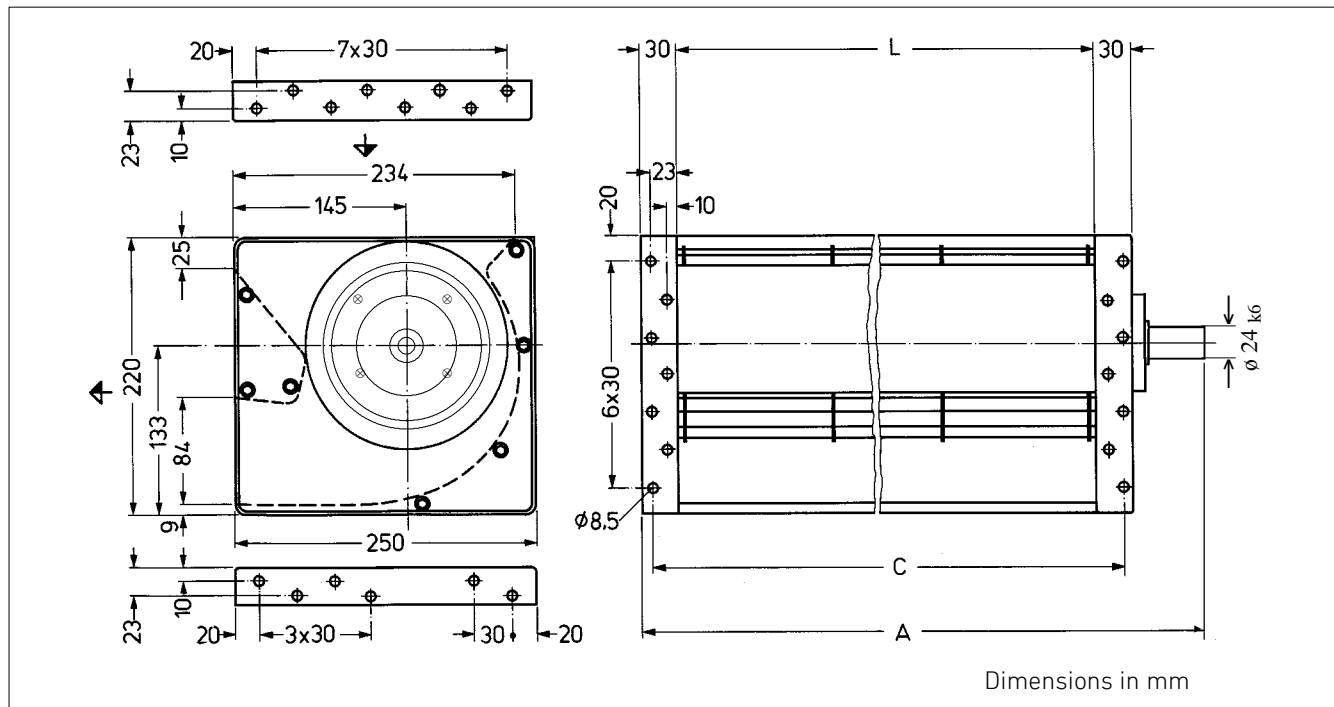
To connect to ducts and appliances plug in slots and sealing planes are provided over the whole fan width for the intake and discharge openings.

Make sure to observe the applicable safety codes before starting the fans.

For higher temperatures check V-belt selection.

The fans are designed for continuous operation with constant load: For frequent start/stop operation please check with LTG.

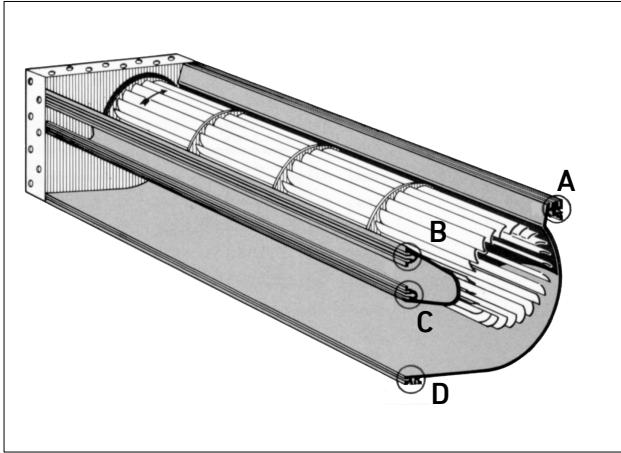
Dimensions and Performance Data



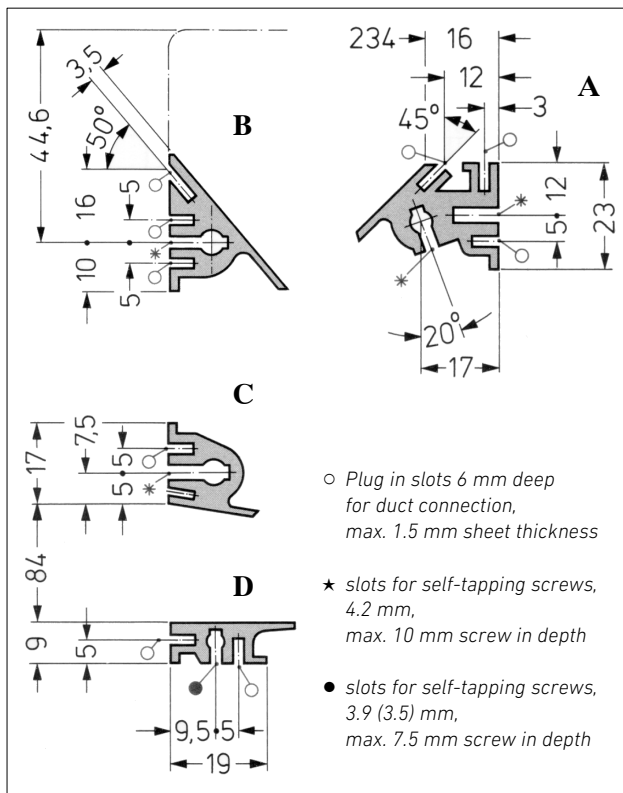
Type/ Nominal Length	L	Dimensions A C [inch] (mm)	Air-Volume V _{max} [cfm] (m ³ /h)	Pressure Δp _{fmax} ["wg] (Pa)	Speed n _{max} [rpm]	Masses appr. [lb] (kg)
TWR 150/401/N TWL 150/401/N	15.79 (401)	21.54 (547) 17.60 (447)	3650 (6200)	2.4 (600)	2800	22 (10)
TWR 150/601/N TWL 150/601/N	23.66 (601)	29.41 (747) 25.47 (647)	5180 (8800)	2.4 (600)	2800	29 (13)
TWR 150/864/N TWL 150/864/N	34.02 (864)	39.76 (1010) 35.83 (910)	7060 (12,000)	2 (510)	2600	36 (16)
TWR 150/1064/N TWL 150/1064/N	41.89 (1064)	47.64 (1210) 43.70 (1110)	8240 (14,000)	1.7 (430)	2400	42 (19)
TWR 150/1264/N TWL 150/1264/N	49.76 (1264)	55.52 (1410) 51.58 (1310)	7060 (12,000)	1 (240)	1800	49 (22)
TWR 150/1464/N TWL 150/1464/N	57.64 (1464)	63.39 (1610) 59.45 (1510)	6475 (11 000)	3.2 (155)	1440	55 (25)

LTG Tangential Fans Type TW Impeller Diameter 6" (150 mm)

Plug in slots



Plug in slots over the full fan width

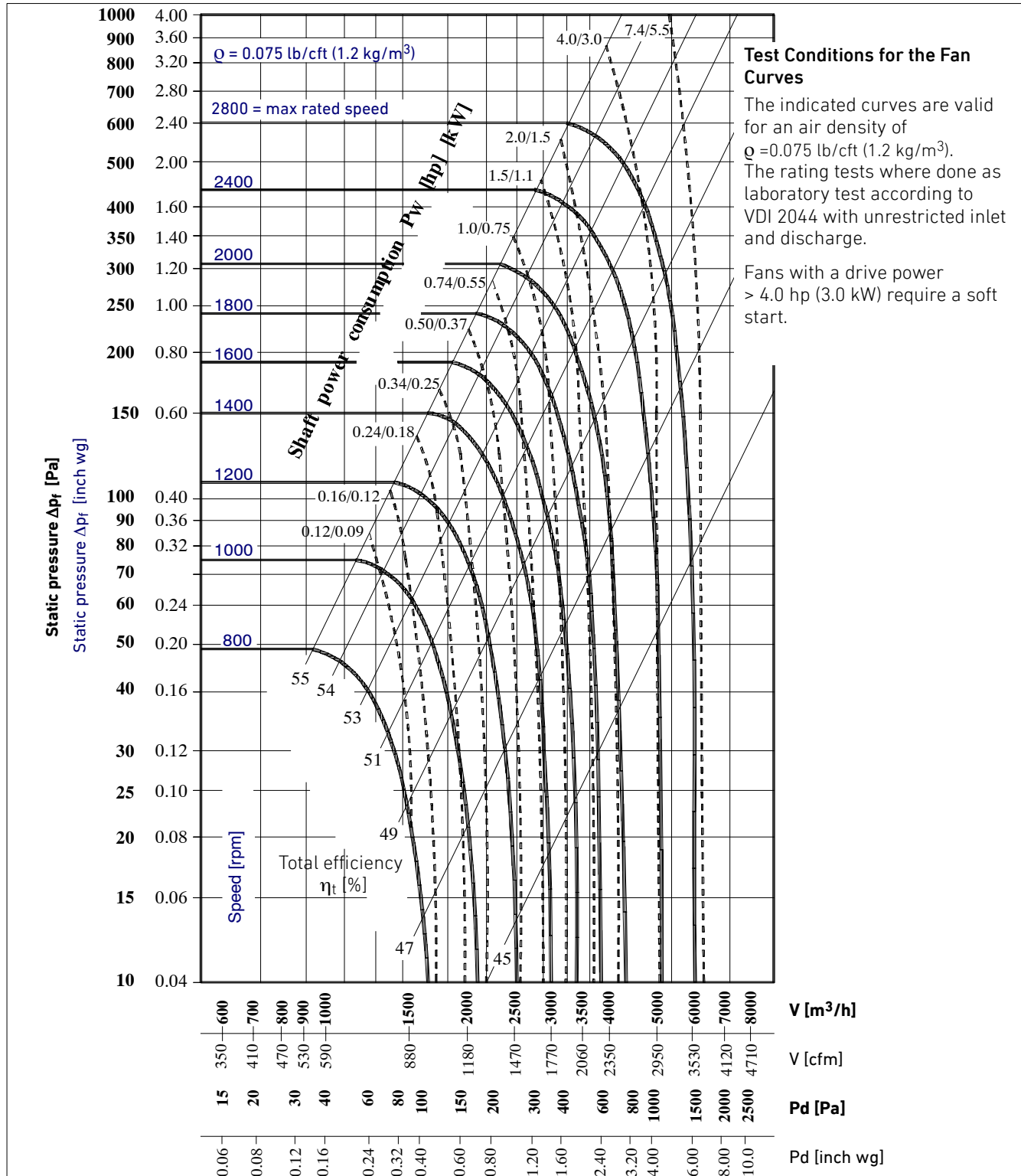


LTG Tangential Fans Type TW

Impeller Diameter 6" (150 mm)

Fan Curves for nominal length 16" (401 mm)

The indicated shaft power consumption does **not** include the belt drive losses.

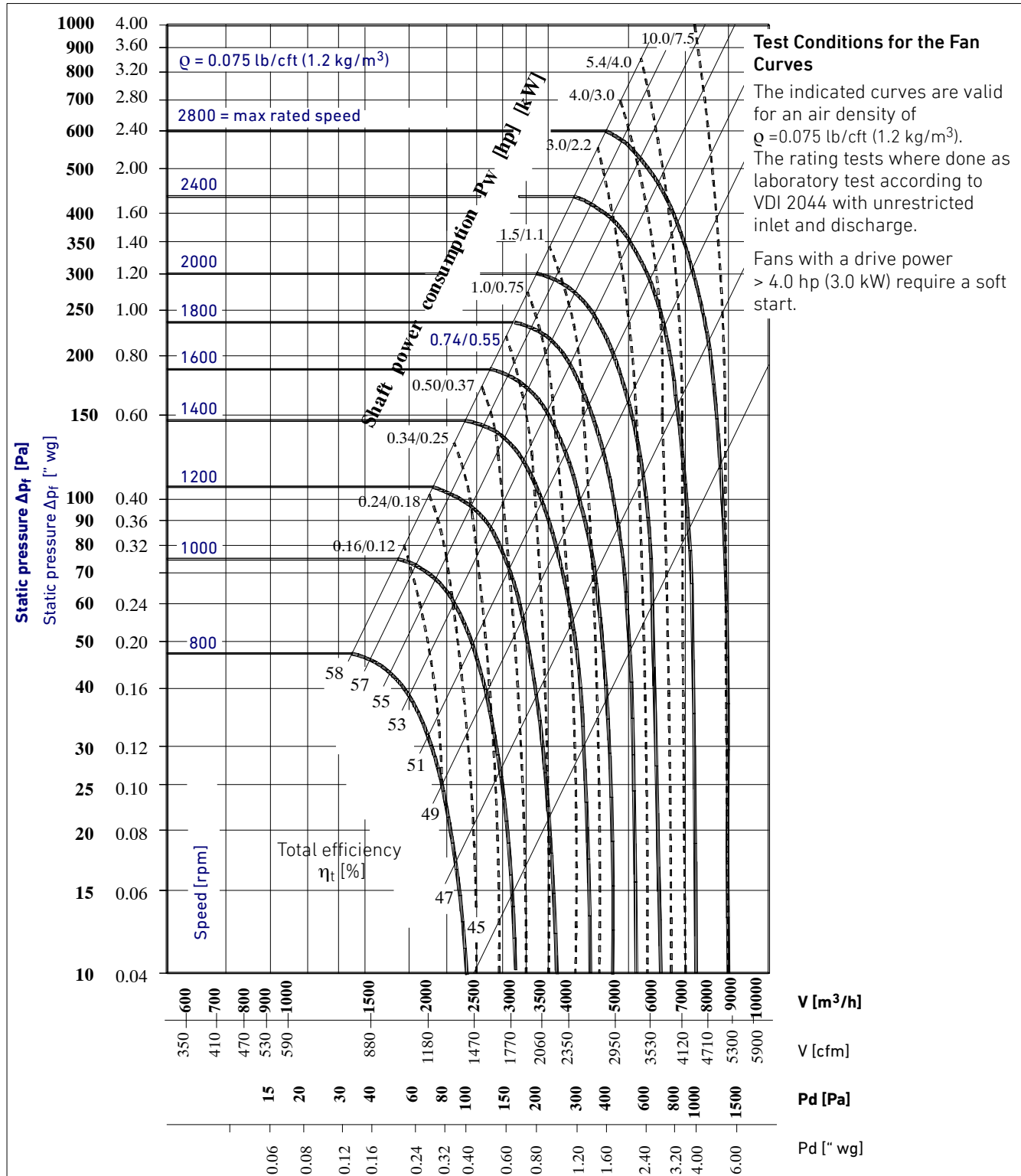


LTG Tangential Fans Type TW

Impeller Diameter 6" (150 mm)

Fan Curves for nominal length 23.5" (601 mm)

The indicated shaft power consumption does **not** include the belt drive losses.

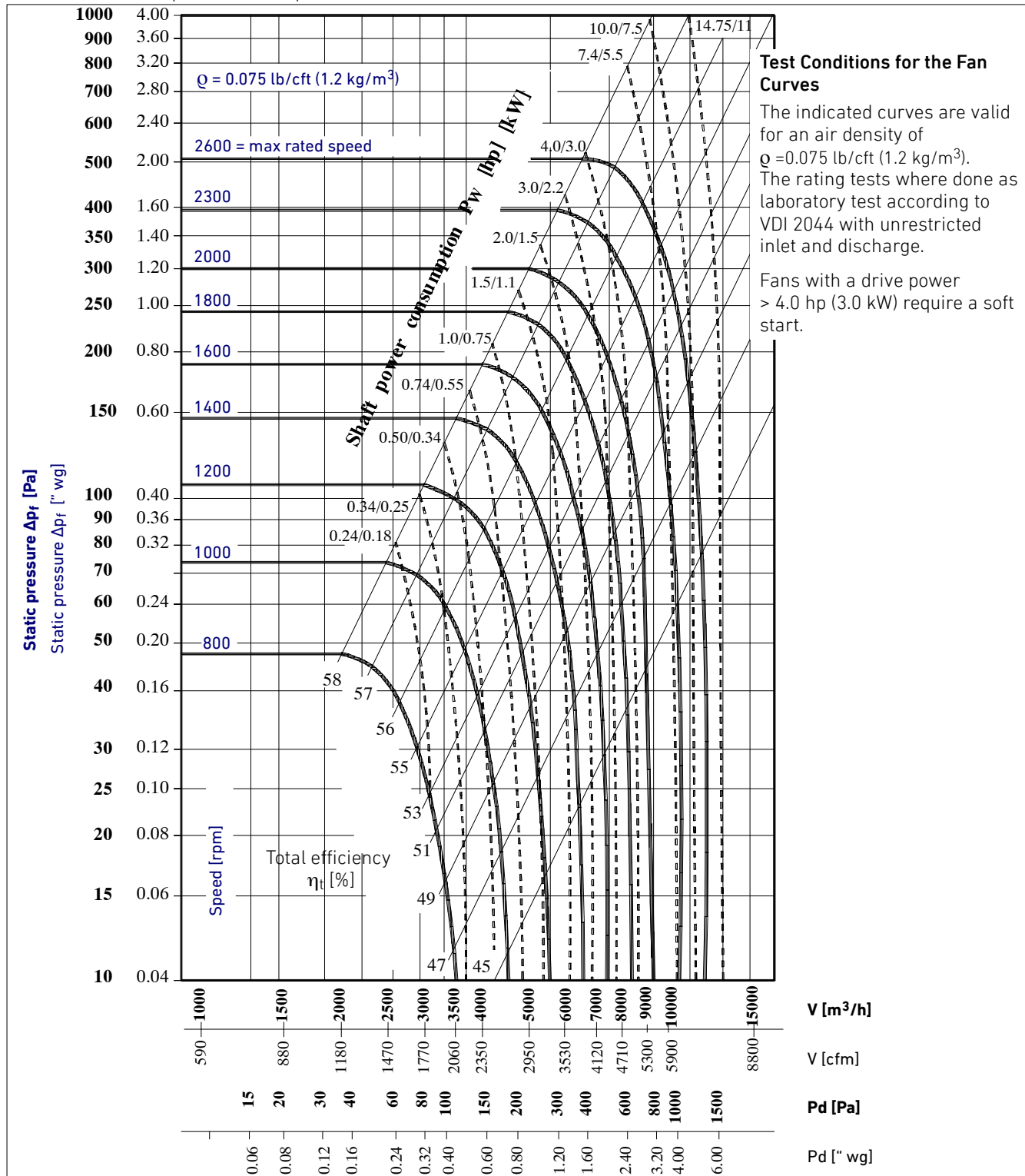


LTG Tangential Fans Type TW

Impeller Diameter 6" (150 mm)

Fan Curves for nominal length 34" (864 mm)

The indicated shaft power consumption does **not** include the belt drive losses.

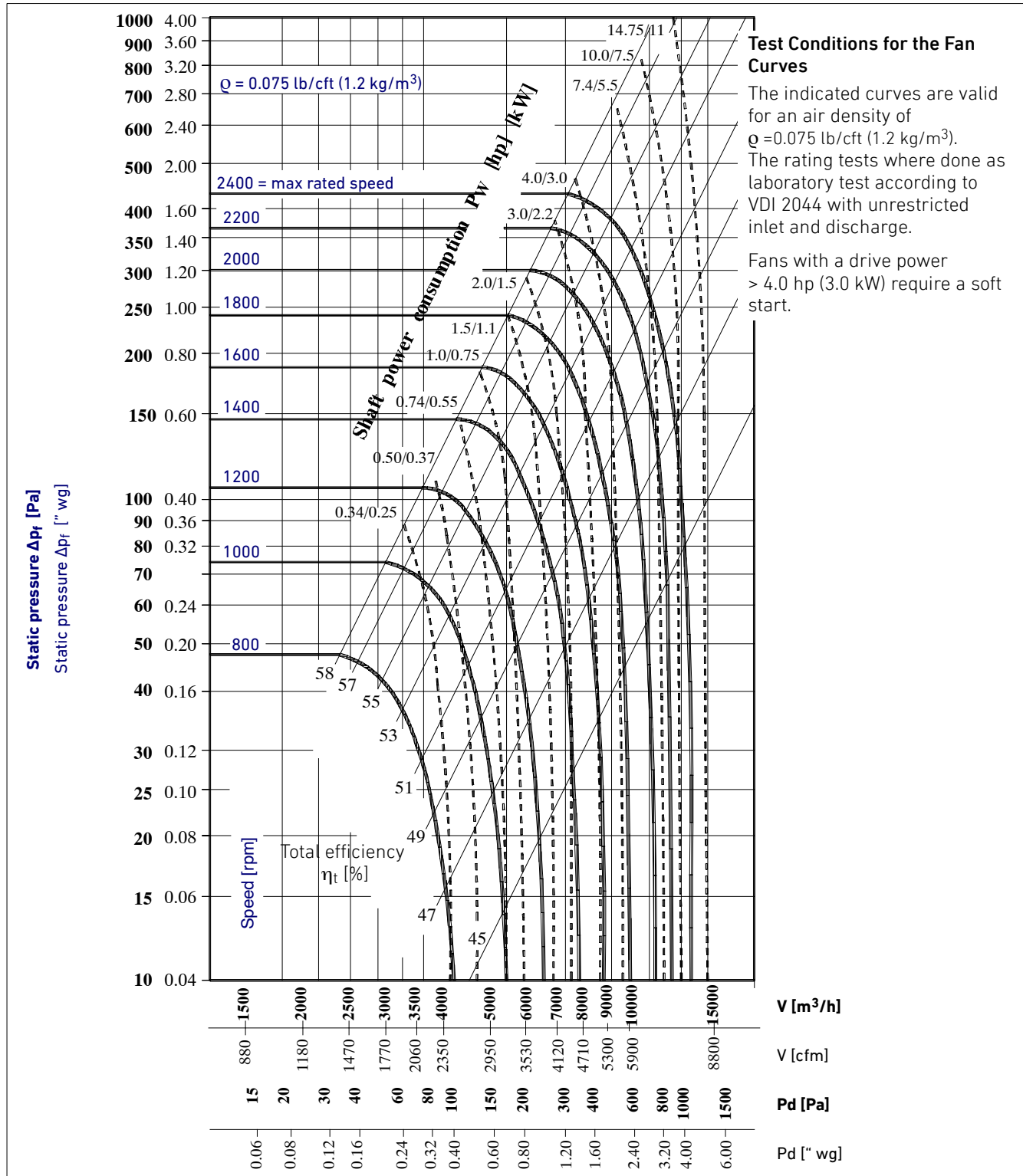


LTG Tangential Fans Type TW

Impeller Diameter 6" (150 mm)

Fan Curves for nominal length 42" (1064 mm)

The indicated shaft power consumption does **not** include the belt drive losses.

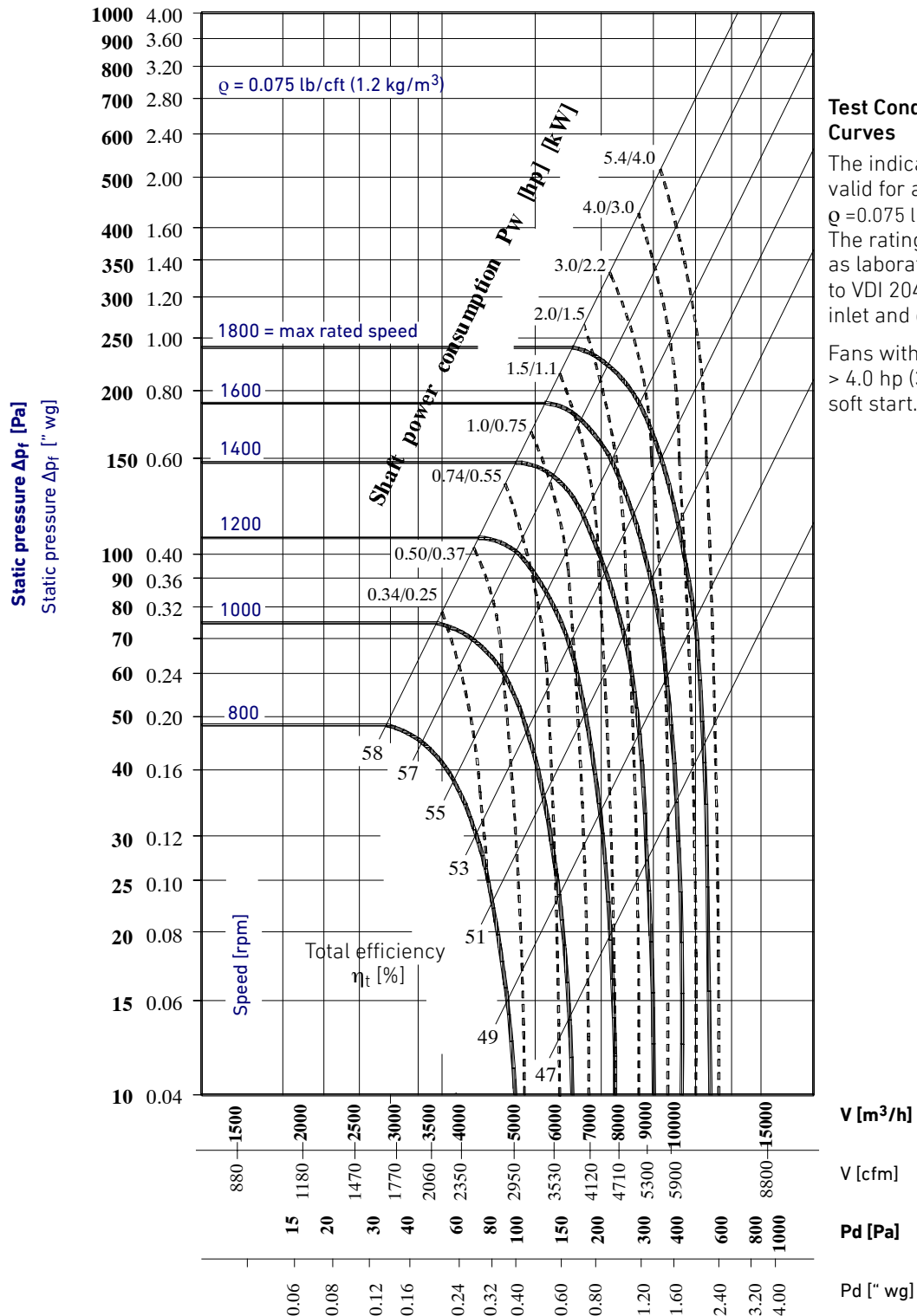


LTG Tangential Fans Type TW

Impeller Diameter 6" (150 mm)

Fan Curves for nominal length 50" (1264 mm)

The indicated shaft power consumption does **not** include the belt drive losses.



LTG Tangential Fans Type TW, Impeller Diameter 6" (150 mm)

Fan curves for nominal length 50" (1464 mm)

The indicated shaft power consumption does **not** include the belt drive losses.

