

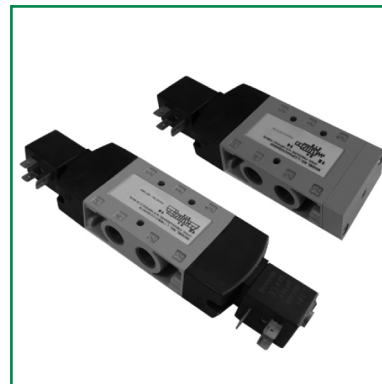
FEATURES

- Solenoid pilot
- DIN plug-in solenoid indicator light
- Unlubricated or lubricated service
- In-line or manifold mounted

STANDARD VOLTAGES

DC (=) : 24V

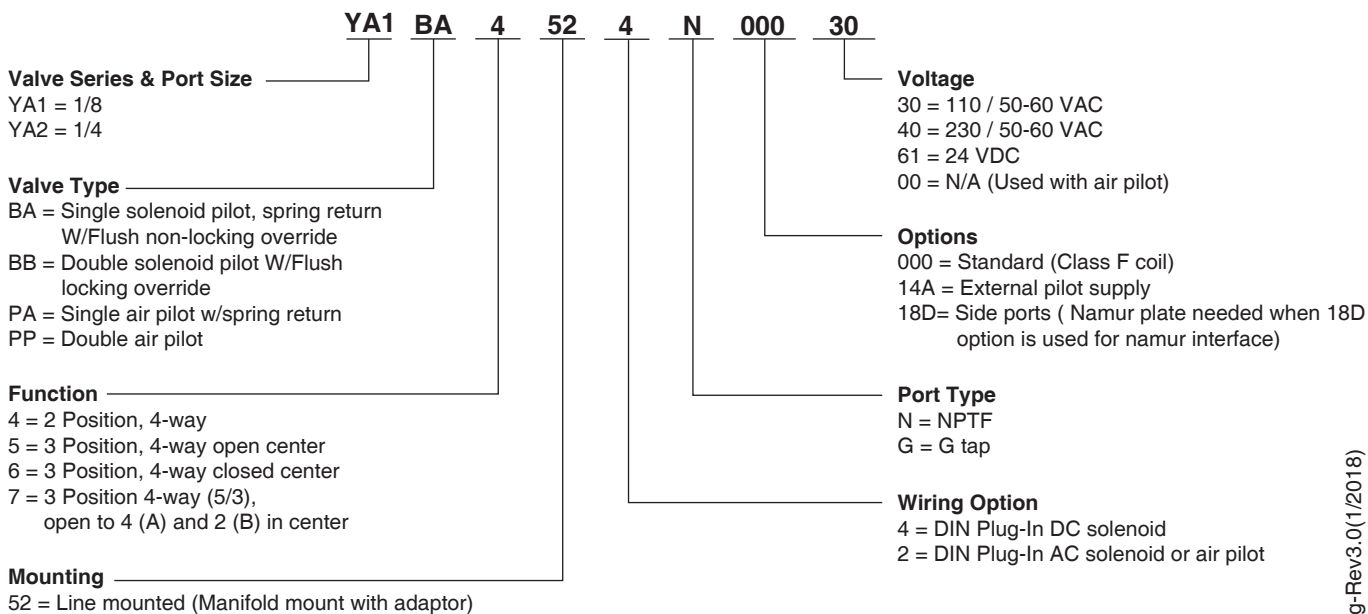
AC (~) : 110V-230V/50-60Hz



TECHNICAL DATA (YA)

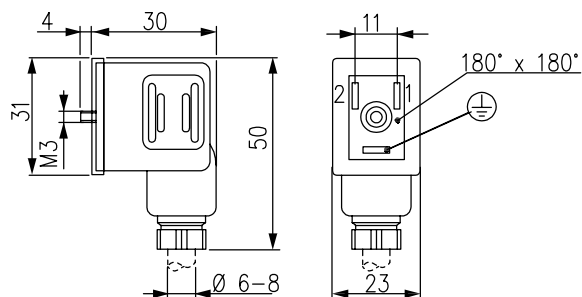
Valve Data	English		Metric	
Cv	1/8 = 1.0	1/4 = 1.0	1/8 = 1.0	1/4 = 1.0
Flow Capacity	46 SCFM upstream pressure to atmosphere @ 80 PSIG		985 NI/m @6 bar upstream/5 bar downstream	
Main Valve Operating Pressure Range	28" HG. Vacuum to 150 PSIG		Vacuum to 10 bar	
Pilot Pressure Range: Internal and External	14.5 to 150 PSIG		1 to 10 bar	
Temperature Range: Solenoid Pilot (ambient)	-10°F to +115°F		-23°C to +46°C	

HOW TO ORDER



Note: Plug connector is included with DIN solenoid

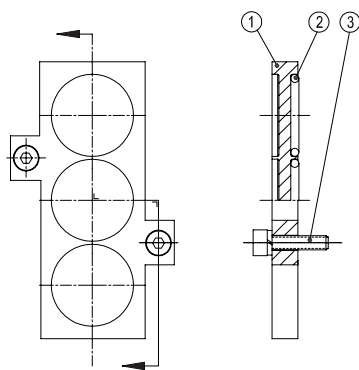
PLUG CONNECTOR ASSEMBLIES



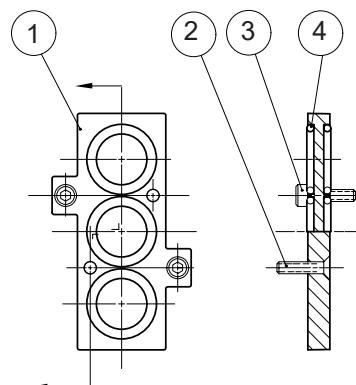
Plug Connector Description	Part No.
Black Plug Assembly	88122404

# Of Stations	Manifold Kit No	# Of Stations	Manifold Kit No
	G 1/4		G 1/4
2 Stations	106-1096	8 Stations	106-1102
3 Stations	106-1097	9 Stations	106-1103
4 Stations	106-1098	10 Stations	106-1104
5 Stations	106-1099	11 Stations	106-1105
6 Stations	106-1100	12 Stations	106-1106
7 Stations	106-1101	Adaptor Kit	Order (1) adaptor kit for each station on the manifold Includes all seals and screw

BLANK STATION PLATE KIT 239-288-SJ*



ADAPTOR KIT 239-311*



SOLENOID ASSEMBLIES*

STANDARD VOLTAGES	110/50-60 VAC	230/50-60 VAC	24 VDC
Part No.	43005069	43004886	43004869

* To be sold separately