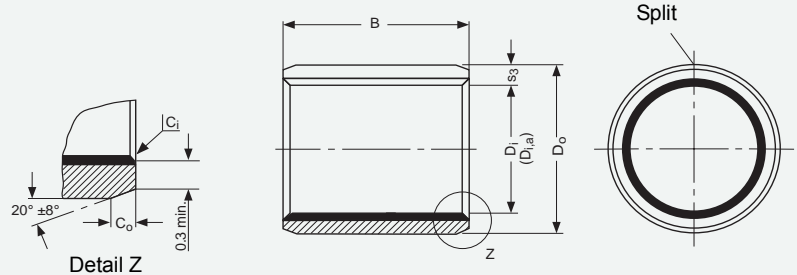
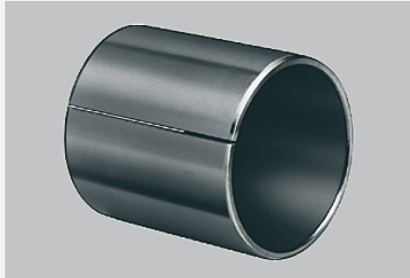


8 Standard Products

8.1 DU Cylindrical Bushes



Dimensions and Tolerances according to ISO 3547 and GSP-Specifications

All dimensions in mm

Outside Co and Inside Ci chamfers

Wall thickness s_3	C_o (a)		C_i (b)
	machined	rolled	
0.75	0.5 ± 0.3	0.5 ± 0.3	-0.1 to -0.4
1	0.6 ± 0.4	0.6 ± 0.4	-0.1 to -0.5
1.5	0.6 ± 0.4	0.6 ± 0.4	-0.1 to -0.7

Wall thickness s_3	C_o (a)		C_i (b)
	machined	rolled	
2	1.2 ± 0.4	1.0 ± 0.4	-0.1 to -0.7
2.5	1.8 ± 0.6	1.2 ± 0.4	-0.2 to -1.0

a = Chamfer C_o machined or rolled at the opinion of the manufacturer

b = C_i can be a radius or a chamfer in accordance with ISO 13715

Part No.	Nominal Diameter		Wall thickness s ₃	Width B	Shaft-∅ D _J [h6, f7, h8]		Housing-∅ D _H [H6, H7]		Bush-∅ D _{i,a} Ass. in H6/H7 housing	Clearance C _D			
	D _i	D _O			max. min.	max. min.	max. min.	max. min.	max. min.				
0203DU	2	3.5	0.750 0.730	3.25	h6	2.000 1.994	H6	3.508 3.500	2.048 2.000	0.054 0.000			
0205DU				2.75							4.75	3.000 2.994	4.508 4.500
0303DU	3	4.5		3.25		4.000 3.992		5.508 5.500	4.048 4.000		0.056 0.000		
0305DU				2.75								4.75	5.75
0306DU				3.25								4.25	3.75
0403DU	4	5.5		4.25		4.990 4.978		7.015 7.000	5.055 4.990		0.077 0.000		
0404DU				3.75						5.25		9.75	
0406DU				6.25						5.75		8.25	
0410DU				10.25						9.75		10.25	
0505DU	5	7		5.25		5.990 5.978		8.015 8.000	6.055 5.990	0.083 0.003			
0508DU			4.75	7.75	9.75								
0510DU			8.25	7.75	10.25								
0604DU	6	8	4.25	6.987 6.972	9.015 9.000	7.055 6.990	0.083 0.003						
0606DU			3.75					5.75	9.75				
0608DU			6.25					5.25	10.25				
0610DU			5.75					4.75	10.25				
0705DU	7	9	10.25	6.987 6.972	9.015 9.000	7.055 6.990		0.083 0.003					
0710DU			9.75						10.25	9.75			

8 Standard Products

Part No.	Nominal Diameter		Wall thickness s ₃	Width B	Shaft-∅ D _J [h6, f7, h8]		Housing-∅ D _H [H6, H7]		Bush-∅ D _{i,a} Ass. in H6/H7 housing	Clearance C _D
	D _i	D _O	max. min.	max. min.	max. min.		max. min.		max. min.	max. min.
0806DU	8	10	1.005 0.980	6.25	f7	7.987 7.972	H7	10.015 10.000	8.055 7.990	0.083 0.003
0808DU				5.75						
0810DU				8.25 7.75						
0812DU				10.25 9.75						
1006DU	10	12		12.25 11.75		9.987 9.972		12.018 12.000	10.058 9.990	0.086 0.003
1008DU				6.25 5.75						
1010DU				8.25 7.75						
1012DU				10.25 9.75						
1015DU				12.25 11.75						
1020DU				15.25 14.75						
1208DU	12	14		20.25 19.75		11.984 11.966		14.018 14.000	12.058 11.990	0.092 0.006
1210DU				25.25 24.75						
1212DU				8.25 7.75						
1215DU				10.25 9.75						
1220DU				12.25 11.75						
1225DU				15.25 14.75						
1310DU	13	15		20.25 19.75		12.984 12.966		15.018 15.000	13.058 12.990	
1320DU				5.25 4.75						
1405DU	14	16		10.25 9.75		13.984 13.966		16.018 16.000	14.058 13.990	
1410DU				12.25 11.75						
1412DU				15.25 14.75						
1415DU				20.25 19.75						
1420DU				25.25 24.75						
1425DU				10.25 9.75						
1510DU	15	17		12.25 11.75		14.984 14.966		17.018 17.000	15.058 14.990	
1512DU				15.25 14.75						
1515DU				20.25 19.75						
1520DU				25.25 24.75						
1525DU				10.25 9.75						
1610DU				12.25 11.75						
1612DU	16	18		15.25 14.75		15.984 15.966		18.018 18.000	16.058 15.990	
1615DU				20.25 19.75						
1620DU				25.25 24.75						
1625DU				20.25 19.75						
1720DU				16.984 16.966						19.021 19.000

Part No.	Nominal Diameter		Wall thickness s_3	Width B	Shaft- \varnothing D_J [h6, f7, h8]		Housing- \varnothing D_H [H6, H7]		Bush- \varnothing $D_{I,a}$ Ass. in H6/H7 housing	Clearance C_D
	D_i	D_o	max. min.	max. min.	max. min.		max. min.		max. min.	max. min.
1810DU	18	20	1.005 0.980	10.25 9.75	f7	17.984 17.966	H7	20.021 20.000	18.061 17.990	0.095 0.006
1815DU				15.25						
1820DU				14.75						
1825DU				20.25						
1825DU				19.75						
1825DU				25.25						
1825DU				24.75						
2010DU	20	23	1.505 1.475	10.25 9.75	f7	19.980 19.959	H7	23.021 23.000	20.071 19.990	0.112 0.010
2015DU				15.25						
2015DU				14.75						
2020DU				20.25						
2020DU				19.75						
2025DU				25.25						
2025DU				24.75						
2030DU				30.25						
2030DU				29.75						
2215DU	22	25	1.505 1.475	15.25 14.75	f7	21.980 21.959	H7	25.021 25.000	22.071 21.990	0.112 0.010
2220DU				20.25						
2220DU				19.75						
2225DU				25.25						
2225DU				24.75						
2230DU				30.25						
2230DU				29.75						
2415DU	24	27	1.505 1.475	15.25 14.75	f7	23.980 23.959	H7	27.021 27.000	24.071 23.990	0.112 0.010
2420DU				20.25						
2420DU				19.75						
2425DU				25.25						
2425DU				24.75						
2430DU				30.25						
2430DU				29.75						
2515DU	25	28	1.505 1.475	15.25 14.75	f7	24.980 24.959	H7	28.021 28.000	25.071 24.990	0.112 0.010
2520DU				20.25						
2520DU				19.75						
2525DU				25.25						
2525DU				24.75						
2530DU				30.25						
2550DU				29.75						
2550DU				50.25						
2550DU				49.75						
2815DU	28	32	2.005 1.970	15.25 14.75	f7	27.980 27.959	H7	32.025 32.000	28.085 27.990	0.126 0.010
2820DU				20.25						
2820DU				19.75						
2825DU				25.25						
2825DU				24.75						
2830DU				30.25						
2830DU				29.75						
3010DU	30	34	2.005 1.970	10.25 9.75	f7	29.980 29.959	H7	34.025 34.000	30.085 29.990	0.126 0.010
3015DU				15.25						
3015DU				14.75						
3020DU				20.25						
3020DU				19.75						
3025DU				25.25						
3025DU				24.75						
3030DU				30.25						
3030DU				29.75						
3040DU				40.25						
3040DU				39.75						
3220DU	32	36	2.005 1.970	20.25 19.75	f7	31.975 31.950	H7	36.025 36.000	32.085 31.990	0.135 0.015
3230DU				30.25						
3230DU				29.75						
3240DU				40.25						
3240DU				39.75						

8 Standard Products

Part No.	Nominal Diameter		Wall thickness s ₃	Width B	Shaft-∅ D _J [h6, f7, h8]		Housing-∅ D _H [H6, H7]		Bush-∅ D _{i,a} Ass. in H6/H7 housing	Clearance C _D	
	D _i	D _O	max. min.	max. min.	max. min.		max. min.		max. min.	max. min.	
3520DU	35	39	2.005 1.970	20.25	f7	34.975 34.950	H7	39.025 39.000	35.085 34.990	0.135 0.015	
3530DU				19.75							
3535DU				30.25							
3540DU				29.75							
3550DU				35.25							
3720DU	37	41		34.75		36.975 36.950		41.025 41.000	37.085 36.990		
4020DU	40	44		20.25		39.975 39.950		44.025 44.000	40.085 39.990		
4030DU				19.75							
4040DU				30.25							
4050DU				29.75							
4520DU	45	50	2.505 2.460	40.25		44.975 44.950		50.025 50.000	45.105 44.990	0.155 0.015	
4530DU				39.75							
4540DU				45.25							
4545DU				44.75							
4550DU				50.25							
5020DU	50	55		49.75		49.975 49.950		55.030 55.000	50.110 49.990		0.160 0.015
5030DU				49.75							
5040DU				60.25							
5050DU				59.75							
5060DU				20.25							
5520DU	55	60		19.75		54.970 54.940		60.030 60.000	55.110 54.990	0.170 0.020	
5525DU				25.25							
5530DU				24.75							
5540DU				30.25							
5550DU				29.75							
5555DU				40.25							
5560DU				39.75							
6020DU				50.25							
6030DU	49.75										
6040DU	60	65		2.505 2.460		60.25		59.970 59.940	65.030 65.000		60.110 59.990
6050DU						59.75					
6060DU						70.25					
6070DU						69.75					

Part No.	Nominal Diameter		Wall thickness s ₃	Width B	Shaft-∅ D _J [h6, f7, h8]		Housing-∅ D _H [H6, H7]		Bush-∅ D _{I,a} Ass. in H6/H7 housing	Clearance C _D			
	D _I	D _O	max. min.	max. min.	max. min.		max. min.		max. min.	max. min.			
6530DU	65	70	2.505 2.460	30.25 29.75	f7	64.970 64.940	H7	70.030 70.000	65.110 64.990	0.170 0.020			
6550DU				50.25 49.75							69.970 69.940	75.030 75.000	70.110 69.990
6570DU				70.25 69.75									
7040DU	40.25 39.75	74.970 74.940		80.030 80.000		75.110 74.990							
7050DU	50.25 49.75												
7070DU	70.25 69.75												
7560DU	75	80		60.25 59.75		80.000 79.946		85.035 85.000	80.155 80.020				
7580DU				80.25 79.75									
8040DU	80	85		2.490 2.440		40.50 39.50		h8	85.000 84.946		90.035 90.000	85.155 85.020	0.209 0.020
8060DU			60.50 59.50		89.946	95.035 95.000	90.155 90.020						
8080DU			80.50 79.50										
80100DU	100.50 99.50	94.946	100.035 100.000					100.155 100.020					
8530DU	30.50 29.50				104.946	110.035 110.000	105.155 105.020						
8560DU	60.50 59.50								109.946	115.035 115.000	110.155 110.020		
85100DU	100.50 99.50	114.946	120.035 120.000					115.155 115.020					
9060DU	60.50 59.50				124.937	125.040 125.000	120.210 120.070						
90100DU	100.50 99.50								129.937	130.040 130.000	130.210 130.070		
9560DU	60.50 59.50	130.000 129.937	135.040 135.000					0.273 0.070					
95100DU	100.50 99.50				130.000 129.937	135.040 135.000	0.273 0.070						
10050DU	50.50 49.50								130.000 129.937	135.040 135.000	0.273 0.070		
10060DU	60.50 59.50	130.000 129.937	135.040 135.000					0.273 0.070					
100115DU	115.50 114.50				130.000 129.937	135.040 135.000	0.273 0.070						
10560DU	60.50 59.50								130.000 129.937	135.040 135.000	0.273 0.070		
105115DU	115.50 114.50	130.000 129.937	135.040 135.000					0.273 0.070					
11060DU	60.50 59.50				130.000 129.937	135.040 135.000	0.273 0.070						
110115DU	115.50 114.50								130.000 129.937	135.040 135.000	0.273 0.070		
11550DU	50.50 49.50	130.000 129.937	135.040 135.000					0.273 0.070					
11570DU	70.50 69.50				130.000 129.937	135.040 135.000	0.273 0.070						
12050DU	50.50 49.50								130.000 129.937	135.040 135.000	0.273 0.070		
12060DU	60.50 59.50	130.000 129.937	135.040 135.000					0.273 0.070					
120100DU	100.50 99.50				130.000 129.937	135.040 135.000	0.273 0.070						
125100DU	100.50 99.50								130.000 129.937	135.040 135.000	0.273 0.070		
13060DU	60.50 59.50	130.000 129.937	135.040 135.000	0.273 0.070									
130100DU	100.50 99.50				130.000 129.937	135.040 135.000	0.273 0.070						