





CARATTERISTICHE TECNICHE

I cilindri pneumatici della serie 300 sono senza deceleratori e di costruzione semplice ed economica.

Le testate avvitate alla canna complete di sistema di fissaggio permettono di ottenere ingombri molto contenuti.

alesaggi	20	27	35	40	50	60	70	85	100
attacchi aria	1/8"		1/8"			1/4"			
tolleranza corsa	±0,8		±1			±1,3			

fissaggi..... vite anteriore - cerniera posteriore - flangia anteriore - piedini - flangia posteriore - fissaggio su stelo

versioni..... doppio effetto - semplice effetto - stelo semplice - stelo passante - testate ridotte - tandem -
doppia stazione - doppio

CARATTERISTICHE FUNZIONALI

fluidoaria filtrata e lubrificata

pressione max.12 bar

temperatura0°C ÷ 80°C (-20°C con aria secca)

CARATTERISTICHE COSTRUTTIVE

testate in lega di alluminio

camicia alluminio ox. duro

stelo in acciaio C45 cromato

boccola guida stelo..... autolubrificante in bronzo sinterizzato

pistone in lega di alluminio

guarnizioni NBR (per alte temperature in VITON su richiesta)

anello guida pistoneresina acetlica ad alta scorrevolezza

CORSE STANDARD DISPONIBILI VALIDE PER TUTTI GLI ALESAGGI A DOPPIO EFFETTO

mm 10 - 15 - 20 - 25 - 30 - 35 - 40 - 50 - 60 - 70 - 75 - 80 - 100 - 120 - 125 - 130 - 140 - 150 - 160 - 170 - 175 -
180 - 200 - 250 - 300 - 350 - 400 - 450 - 500 - 600 - 700 - 800 - 900 - 1000

CORSA MASSIMA CILINDRI A SEMPLICE EFFETTO

alesaggi	20	27	35	40	50	60	70	85	100
corsa	50	50	50	60	60	70	70	80	100

LEGENDA CODICI

□ . □ . □ . Ø .corsa

300 - fissaggio vite anteriore
301 - fissaggio cerniera posteriore
302 - fissaggio flangia anteriore
303 - fissaggio a piedini
304 - fissaggio flangia posteriore
305 - fissaggio su stelo (cil. doppio)

0 - stelo semplice
1 - stelo passante
2 - cilindro tandem
3 - doppia stazione
4 - cilindro doppio

0 - D.E.
2 - S.E.
4 - D.E. testate ridotte
5 - D.E. viton



TECHNICAL CHARACTERISTICS

Pneumatic cylinders series 300 do not have decelerators and are made of simple and cheaper construction.

End covers screwed to the tube completed by fixing system, they keep overall dimensions to a minimum.

bores	20	27	35	40	50	60	70	85	100
air attachments	1/8"		1/8"		1/4"				
stroke tolerances	±0,8		±1		±1,3				

fixing..... front screw - rear bracket - front flange - feet - rear flange - fixing on piston rod

versions.... double acting - single acting - simple piston rod - double piston rod - reduced end covers - tandem - double station - double

FUNCTIONING CHARACTERISTICS

fluid filtered and lubricated air

max. pressure 12 bar

temperature 0°C ÷ 80°C (-20°C with dry air)

MANUFACTURING CHARACTERISTICS

end covers aluminium alloy

tube hard oxidised aluminium

piston rod chromed C45 steel

piston rod guide bush..... self-lubricating in sintered bronze

piston aluminium alloy

seals NBR (on request VITON for high temperatures)

piston guide ring high flowability acetalic resin

STANDARD STROKES AVAILABLE FOR ALL DOUBLE-ACTING BORES

mm 10 - 15 - 20 - 25 - 30 - 35 - 40 - 50 - 60 - 70 - 75 - 80 - 100 - 120 - 125 - 130 - 140 - 150 - 160 - 170 - 175 - 180 - 200 - 250 - 300 - 350 - 400 - 450 - 500 - 600 - 700 - 800 - 900 - 1000

MAXIMUM STROKE SINGLE ACTING CYLINDERS

bores	20	27	35	40	50	60	70	85	100
stroke	50	50	50	60	60	70	70	80	100

CODE LEGEND

□ . □ . □ . Ø . stroke

300 - front screw fixing
301 - rear hinge fixing
302 - front flange fixing
303 - foot fixing
304 - rear flange fixing
305 - piston rod fixing (double cyl.)

0 - simple piston rod
1 - double piston rod
2 - tandem cylinder
3 - double station
4 - double cylinder

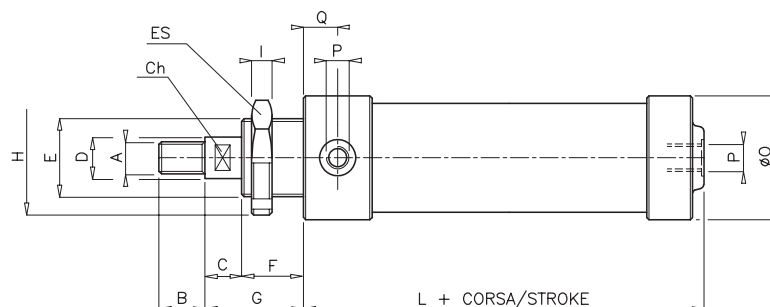
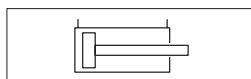
0 - D.A.
2 - S.A.
4 - D.A. reduced end covers
5 - D.A. viton

SERIE 300

diottalevi

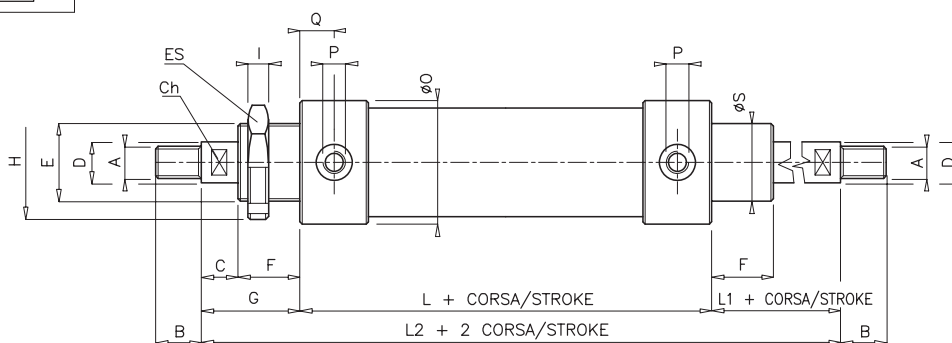
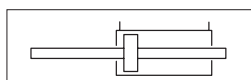


Cilindri con fissaggi integrati Integrated fixing cylinders



FISSAGGIO VITE ANTERIORE codice. 300.00 Ø.corsa
FRONT SCREW FIXING code. 300.00 Ø.stroke

ALESAGGIO BORE	A	B	Ch	C	D	E	F	G	H	ES	I	L	ØO	P	Q
20	M 6x1	9	6	8	8	24x2	16	24	-	32	5	45	30	1/8"	9
27	M 8x1,25	12	8	10	10	28x2	20	30	-	36	6	48	35	1/8"	10
35	M 10x1,5	15	10	12	12	32x2	24	36	-	40	7	53	45	1/8"	10
40	M 10x1,5	15	10	12	12	36x2	32	44	-	46	8	57	50	1/8"	11
50	M 12x1,75	18	12	15	14	40x1,5	32	47	58	-	9	61	63	1/8"	11
60	M 14x2	21	15	17	18	45x1,5	32	49	65	-	10	66	73	1/4"	13
70	M 16x2	24	17	18	20	50x1,5	35	53	70	-	11	66	84	1/4"	12
85	M 18x2,5	27	19	20	22	60x2	45	65	80	-	11	74	100	1/4"	13
100	M 20x2,5	30	20	23	24	70x2	50	73	92	-	12	81	116	1/4"	14



FISSAGGIO VITE ANTERIORE stelo passante codice. 300.10 Ø.corsa
FRONT SCREW FIXING double piston rod code. 300.10 Ø.stroke

ALESAGGIO BORE	A	B	Ch	C	D	E	F	G	H	ES	I	L	L1	L2	ØO	P	Q	ØS
20	M 6x1	9	6	8	8	24x2	16	24	-	32	5	53	24	101	30	1/8"	9	24
27	M 8x1,25	12	8	10	10	28x2	20	30	-	36	6	64	30	124	35	1/8"	10	28
35	M 10x1,5	15	10	12	12	32x2	24	36	-	40	7	66	36	138	45	1/8"	10	32
40	M 10x1,5	15	10	12	12	36x2	32	44	-	46	8	68	44	156	50	1/8"	11	36
50	M 12x1,75	18	12	15	14	40x1,5	32	47	58	-	9	68	47	162	63	1/8"	11	40
60	M 14x2	21	15	17	18	45x1,5	32	49	65	-	10	78	49	176	73	1/4"	13	45
70	M 16x2	24	17	18	20	50x1,5	35	53	70	-	11	74	53	180	84	1/4"	12	50
85	M 18x2,5	27	19	20	22	60x2	45	65	80	-	11	80	65	210	100	1/4"	13	60
100	M 20x2,5	30	20	23	24	70x2	50	73	92	-	12	89	73	235	116	1/4"	14	70

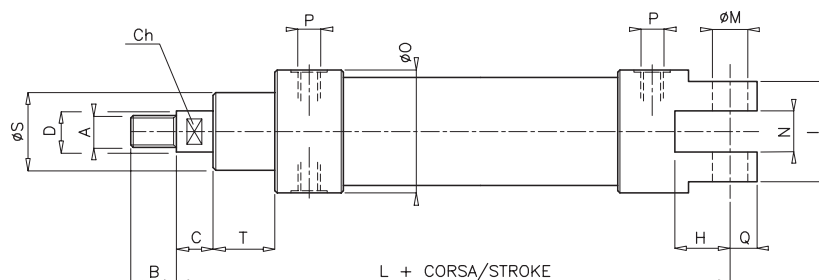
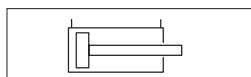
Cilindri con fissaggi integrati

Integrated fixing cylinders



SERIE 300

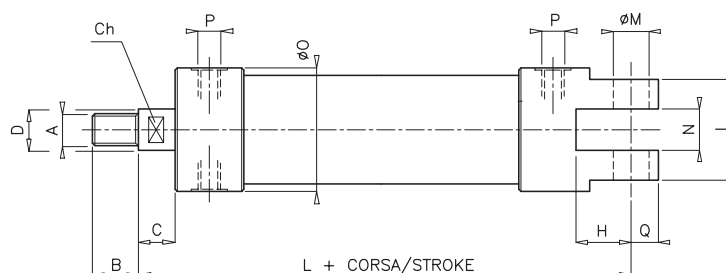
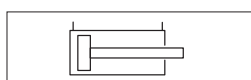
diottalevi



FISSAGGIO CERNIERA POSTERIORE codice. 301.00 Ø.corsa

REAR BRACKET FIXING code. 301.00 Ø.stroke

ALESAGGIO BORE	A	B	Ch	C	D	H	I	L	ØM	N	ØO	P	Q	ØS	T
20	M 6x1	9	6	8	8	10	22	85	5	8	30	1/8"	6	24	16
27	M 8x1,25	12	8	10	10	18	25	95	6	9	35	1/8"	7	28	20
35	M 10x1,5	15	10	12	12	22	32	107	8	12	45	1/8"	9	32	24
40	M 10x1,5	15	10	12	12	23	40	122	10	18	50	1/8"	10	36	32
50	M 12x1,75	18	12	15	14	27	50	131	12	25	63	1/8"	13	40	32
60	M 14x2	21	15	17	18	28	58	140	14	26	73	1/4"	15	45	32
70	M 16x2	24	17	18	20	35	71	152	16	35	84	1/4"	16	50	35
85	M 18x2,5	27	19	20	22	35	77	168	18	40	100	1/4"	18	60	45
100	M 20x2,5	30	20	23	24	44	81	192	20	40	116	1/4"	21	70	50



Solo a doppio effetto
Only double-acting

FISSAGGIO CERNIERA POSTERIORE serie ridotta codice. 301.04 Ø.corsa

REAR BRACKET FIXING reduced series code. 301.04 Ø.stroke

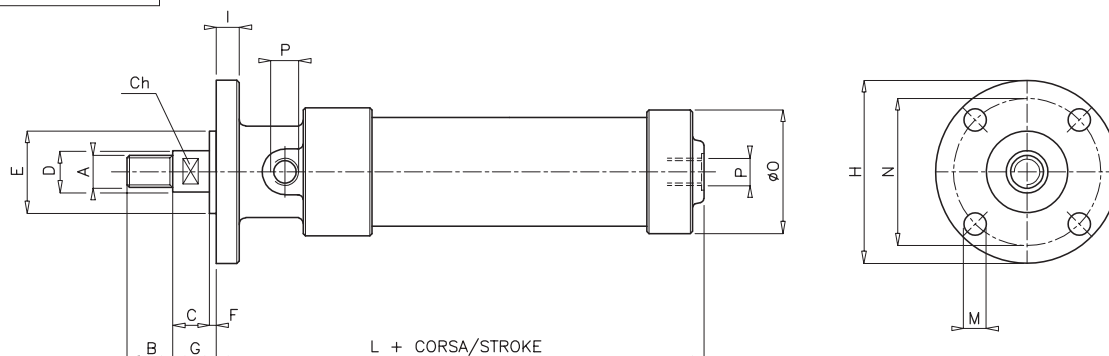
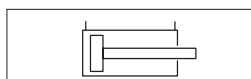
ALESAGGIO BORE	A	B	Ch	C	D	H	I	L	ØM	N	ØO	P	Q
20	M 6x1	9	6	8	8	10	22	72	5	8	30	1/8"	6
27	M 8x1,25	12	8	8	10	18	25	75	6	9	35	1/8"	7
35	M 10x1,5	15	10	11	12	22	32	84	8	12	45	1/8"	9
40	M 10x1,5	15	10	12	12	23	40	90	10	18	50	1/8"	10
50	M 12x1,75	18	12	14	14	27	50	101	12	25	63	1/8"	13
60	M 14x2	21	15	17	18	28	58	110	14	26	73	1/4"	15
70	M 16x2	24	17	16	20	35	71	122	16	35	84	1/4"	16
85	M 18x2,5	27	19	19	22	35	77	128	18	40	100	1/4"	18
100	M 20x2,5	30	20	20	24	44	81	142	20	40	116	1/4"	21

SERIE 300

diottalevi

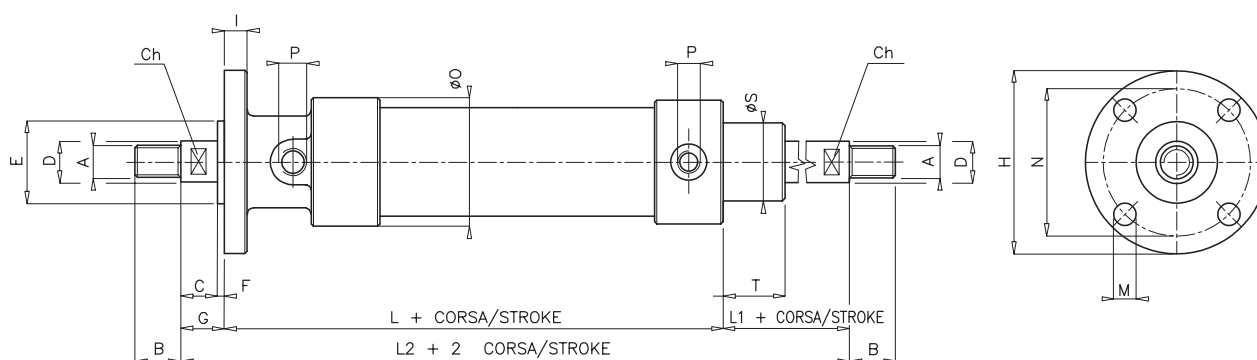
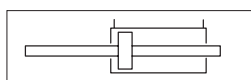


Cilindri con fissaggi integrati Integrated fixing cylinders



FISSAGGIO FLANGIA ANTERIORE codice. **302.00** Ø.corsa
FRONT FLANGE FIXING code. **302.00** Ø.stroke

ALESAGGIO BORE	A	B	Ch	C	D	E	F	G	H	I	L	M	N	ØO	P
20	M 6x1	9	6	8	8	23	2	10	50	4	59	4,5	39	30	1/8"
27	M 8x1,25	12	8	10	10	30	2	12	58	5	66	4,5	48	35	1/8"
35	M 10x1,5	15	10	12	12	36	2	14	65	6	75	5,5	54	45	1/8"
40	M 10x1,5	15	10	12	12	40	3	15	70	7	86	6,5	57	50	1/8"
50	M 12x1,75	18	12	15	14	54	4	19	87	8	89	6,5	75	63	1/8"
60	M 14x2	21	15	17	18	60	4	21	100	8	94	6,5	82	73	1/4"
70	M 16x2	24	17	18	20	70	4	22	119	10	97	8,5	100	84	1/4"
85	M 18x2,5	27	19	20	22	80	4	24	140	11	115	10,5	120	100	1/4"
100	M 20x2,5	30	20	23	24	88	4	27	160	12	127	10,5	137	116	1/4"



FISSAGGIO FLANGIA ANTERIORE stelo passante codice. **302.10** Ø.corsa
FRONT FLANGE FIXING double piston rod code. **302.10** Ø.stroke

ALESAGGIO BORE	A	B	Ch	C	D	E	F	G	H	I	L	L1	L2	M	N	ØO	P	ØS	T
20	M 6x1	9	6	8	8	23	2	10	50	4	67	24	101	4,5	39	30	1/8"	24	16
27	M 8x1,25	12	8	10	10	30	2	12	58	5	82	30	124	4,5	48	35	1/8"	28	20
35	M 10x1,5	15	10	12	12	36	2	14	65	6	88	36	138	5,5	54	45	1/8"	32	24
40	M 10x1,5	15	10	12	12	40	3	15	70	7	97	44	156	6,5	57	50	1/8"	36	32
50	M 12x1,75	18	12	15	14	54	4	19	87	8	96	47	162	6,5	75	63	1/8"	40	32
60	M 14x2	21	15	17	18	60	4	21	100	8	106	49	176	6,5	82	73	1/4"	45	32
70	M 16x2	24	17	18	20	70	4	22	119	10	105	53	180	8,5	100	84	1/4"	50	35
85	M 18x2,5	27	19	20	22	80	4	24	140	11	121	65	210	10,5	120	100	1/4"	60	45
100	M 20x2,5	30	20	23	24	88	4	27	160	12	135	73	235	10,5	137	116	1/4"	70	50

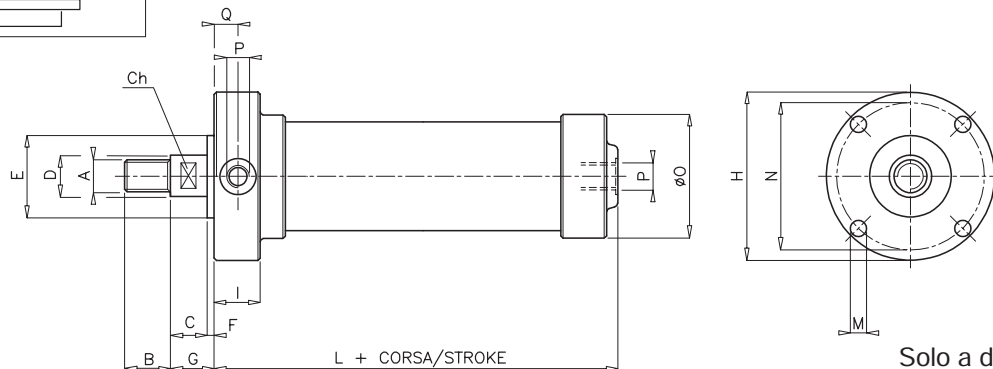
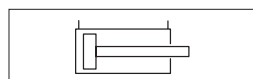
Cilindri con fissaggi integrati Integrated fixing cylinders



SERIE 300

diottalevi

diottalevi



Solo a doppio effetto
Only double-acting

FISSAGGIO FLANGIA ANTERIORE serie ridotta codice. **302.04** Ø.corsa
FRONT FLANGE FIXING reduced series code. **302.04** Ø.stroke

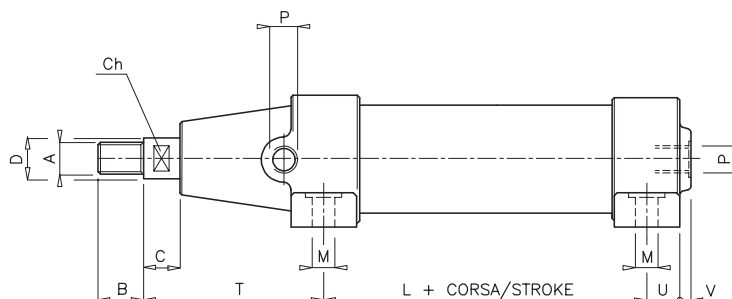
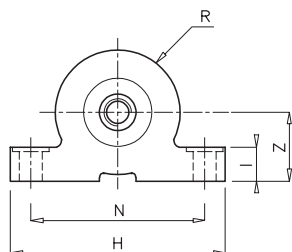
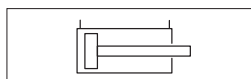
ALESAGGIO BORE	A	B	Ch	C	D	E	F	G	H	I	L	M	N	ØO	P	Q
20	M 6x1	9	6	8	8	23	2	10	50	18	46	4,5	39	30	1/8"	9
27	M 8x1,25	12	8	8	10	30	2	10	60	19	48	4,5	48	35	1/8"	9,5
35	M 10x1,5	15	10	11	12	38	2	13	70	19	53	5,5	59	45	1/8"	9,5
40	M 10x1,5	15	10	12	12	40	3	15	75	21	54	5,5	62	50	1/8"	10,5
50	M 12x1,75	18	12	14	14	50	3	17	90	23	61	6,5	75	63	1/8"	11,5
60	M 14x2	21	15	17	18	62	3	20	100	26	65	8,5	86	73	1/4"	13
70	M 16x2	24	17	16	20	72	4	20	120	27	69	8,5	100	84	1/4"	13,5
85	M 18x2,5	27	19	19	22	80	4	23	140	28	76	10,5	120	100	1/4"	14
100	M 20x2,5	30	20	20	24	88	4	24	160	28	80	10,5	137	116	1/4"	14

SERIE 300

diottalevi

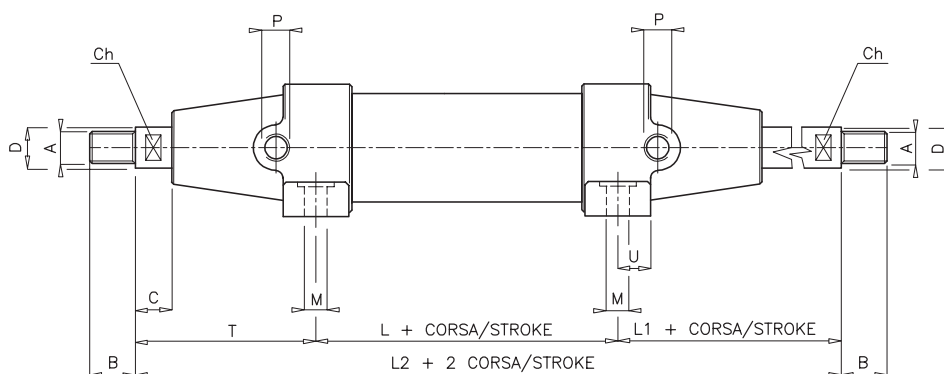
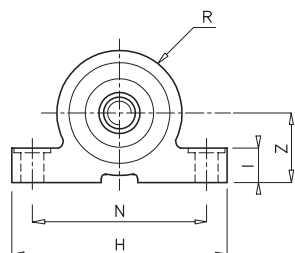
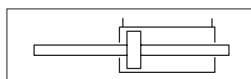


Cilindri con fissaggi integrati Integrated fixing cylinders



FISSAGGIO A PIEDINI codice. 303.00 Ø.corsa
FOOT FIXING code. 303.00 Ø.stroke

ALESAGGIO BORE	A	B	Ch	C	D	H	I	L	M	N	P	R	T	U	V	Z
27	M 8x1,25	12	8	10	10	55	10	19	4,5	45	1/8"	18	50	13	-	19
35	M 10x1,5	15	10	12	12	77	12	25	5,5	59	1/8"	23	54	9	3	24
40	M 10x1,5	15	10	12	12	86	13	25	5,5	65	1/8"	25	65,5	9,5	3	27
50	M 12x1,75	18	12	15	14	97	16	22	5,5	78	1/8"	32	70	11	5	31
60	M 14x2	21	15	17	18	110	17	26	6,5	90	1/4"	37	75	13	6	39
70	M 16x2	24	17	18	20	125	18	26	8,5	100	1/4"	42	77	13	6	44
85	M 18x2,5	27	19	20	22	147	20	36	8,5	120	1/4"	50	87	14	6	51
100	M 20x2,5	30	20	23	24	166	22	37	8,5	136	1/4"	58	99	14	6	59



FISSAGGIO A PIEDINI stelo passante codice. 303.10 Ø.corsa
FOOT FIXING double piston rod code. 303.10 Ø.stroke

ALESAGGIO BORE	A	B	Ch	C	D	H	I	L	L1	L2	M	N	P	R	T	U	Z
27	M 8x1,25	12	8	10	10	55	10	24	50	124	4,5	45	1/8"	18	50	10	19
35	M 10x1,5	15	10	12	12	77	12	30	54	138	5,5	59	1/8"	23	54	9	24
40	M 10x1,5	15	10	12	12	86	13	25	65,5	156	5,5	65	1/8"	25	65,5	10	27
50	M 12x1,75	18	12	15	14	97	16	22	70	162	5,5	78	1/8"	32	70	11	31
60	M 14x2	21	15	17	18	110	17	26	75	176	6,5	90	1/4"	37	75	13	39
70	M 16x2	24	17	18	20	125	18	26	77	180	8,5	100	1/4"	42	77	13	44
85	M 18x2,5	27	19	20	22	147	20	36	87	210	8,5	120	1/4"	50	87	14	51
100	M 20x2,5	30	20	23	24	166	22	37	99	235	8,5	136	1/4"	58	99	14	59

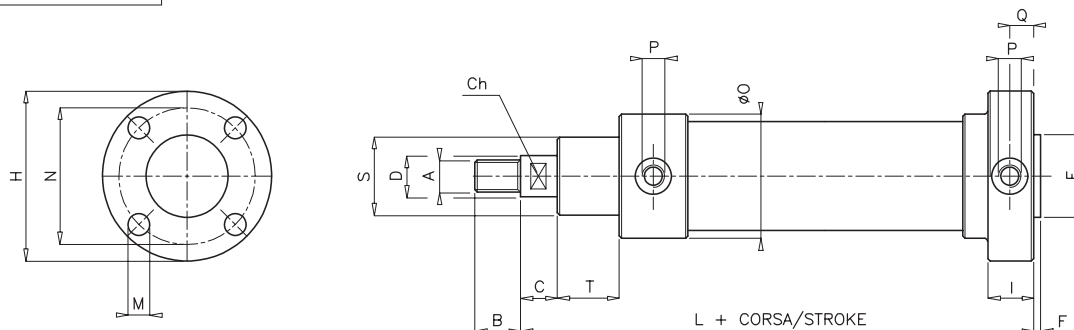
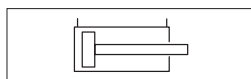
Cilindri con fissaggi integrati

Integrated fixing cylinders



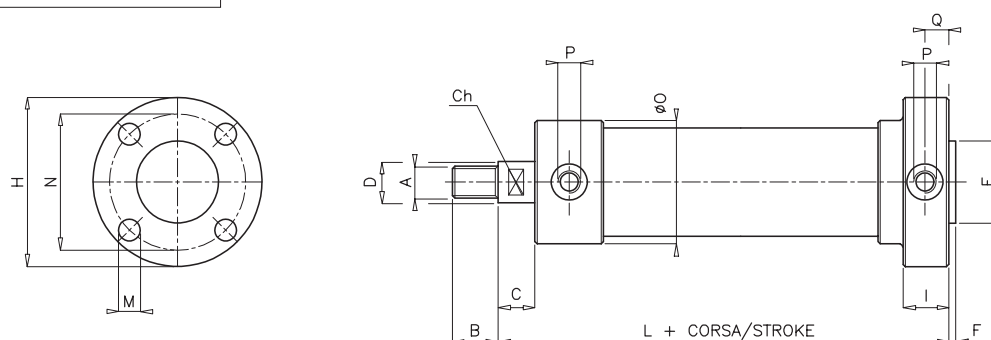
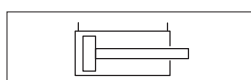
SERIE 300

diottalevi



FISSAGGIO FLANGIA POSTERIORE codice. **304.00** Ø.corsa
REAR FLANGE FIXING code. **304.00** Ø.stroke

ALESAGGIO BORE	A	B	Ch	C	D	E	F	H	I	L	M	N	ØO	P	Q	S	T
20	M 6x1	9	6	8	8	23	2	50	18	78	4,5	39	30	1/8"	9	24	16
27	M 8x1,25	12	8	10	10	30	2	60	19	89	4,5	48	35	1/8"	9,5	28	20
35	M 10x1,5	15	10	12	12	38	2	70	19	97	5,5	59	45	1/8"	9,5	32	24
40	M 10x1,5	15	10	12	12	40	3	75	21	109	5,5	62	50	1/8"	10,5	36	32
50	M 12x1,75	18	12	15	14	50	3	90	23	115	6,5	75	63	1/8"	11,5	40	32
60	M 14x2	21	15	17	18	62	3	100	26	126	8,5	86	73	1/4"	13	45	32
70	M 16x2	24	17	18	20	72	4	120	27	130	8,5	100	84	1/4"	13,5	50	35
85	M 18x2,5	27	19	20	22	80	4	140	28	147	10,5	120	100	1/4"	14	60	45
100	M 20x2,5	30	20	23	24	88	4	160	28	161	10,5	137	116	1/4"	14	70	50



Solo a doppio effetto
 Only double-acting

FISSAGGIO FLANGIA POSTERIORE serie ridotta codice. **304.04** Ø.corsa
REAR FLANGE FIXING reduced series code. **304.04** Ø.stroke

ALESAGGIO BORE	A	B	Ch	C	D	E	F	H	I	L	M	N	ØO	P	Q
20	M 6x1	9	6	8	8	23	2	50	18	65	4,5	39	30	1/8"	9
27	M 8x1,25	12	8	8	10	30	2	60	19	69	4,5	48	35	1/8"	9,5
35	M 10x1,5	15	10	11	12	38	2	70	19	74	5,5	59	45	1/8"	9,5
40	M 10x1,5	15	10	12	12	40	3	75	21	77	5,5	62	50	1/8"	10,5
50	M 12x1,75	18	12	14	14	50	3	90	23	85	6,5	75	63	1/8"	11,5
60	M 14x2	21	15	17	18	62	3	100	26	96	8,5	86	73	1/4"	13
70	M 16x2	24	17	16	20	72	4	120	27	100	8,5	100	84	1/4"	13,5
85	M 18x2,5	27	19	19	22	80	4	140	28	107	10,5	120	100	1/4"	14
100	M 20x2,5	30	20	20	24	88	4	160	28	111	10,5	137	116	1/4"	14

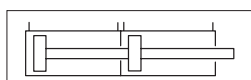


MOLTIPLICATORI DI FORZA

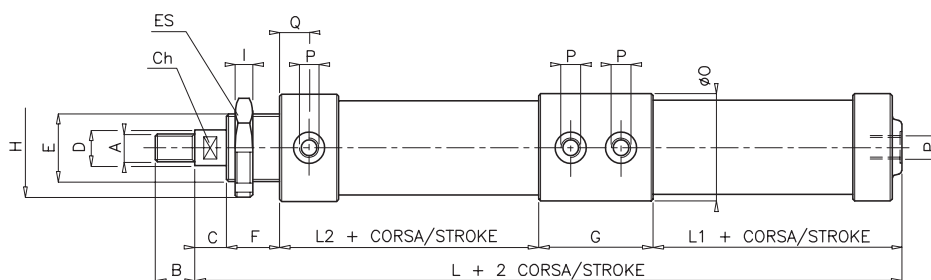
I cilindri tandem o moltiplicatori di forza a due o più camere di spinta trovano applicazione quando si rende necessario aumentare la forza di spinta senza potere aumentare l'alesaggio del cilindro.

FORCE MULTIPLIERS

Tandem cylinders or force multipliers with two or more thrust chambers are used when it is necessary to increase the force of the thrust without having to increase the bore of the cylinder.



MOLTIPLICATORE DI FORZA FORCE MULTIPLIER



CILINDRO TENDEM* fissaggio vite anteriore codice. **300.20** Ø.corsa
TANDEM CYLINDER* front screw fixing code. **300.20** Ø.stroke

ALESAGGIO BORE	A	B	Ch	C	D	E	F	G	H	ES	I	L	L1	L2	ØO	P	Q
20	M 6x1	9	6	8	8	24x2	16	64	-	32	5	140	22	30	30	1/8"	9
27	M 8x1,25	12	8	10	10	28x2	20	70	-	36	6	156	20	36	35	1/8"	10
35	M 10x1,5	15	10	12	12	32x2	24	64	-	40	7	163	25	38	45	1/8"	10
40	M 10x1,5	15	10	12	12	36x2	32	64	-	46	8	169	25	36	50	1/8"	11
50	M 12x1,75	18	12	15	14	40x1,5	32	74	58	-	9	184	28	35	63	1/8"	11
60	M 14x2	21	15	17	18	45x1,5	32	82	65	-	10	199	28	40	73	1/4"	13
70	M 16x2	24	17	18	20	50x1,5	35	86	70	-	11	207	30	38	84	1/4"	12
85	M 18x2,5	27	19	20	22	60x2	45	91	80	-	11	234	36	42	100	1/4"	13
100	M 20x2,5	30	20	23	24	70x2	50	96	92	-	12	255	39	47	116	1/4"	14

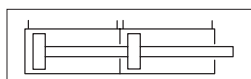
*A richiesta ulteriori camere di spinta / Further thrust chambers available on request

Cilindri con fissaggi integrati Integrated fixing cylinders

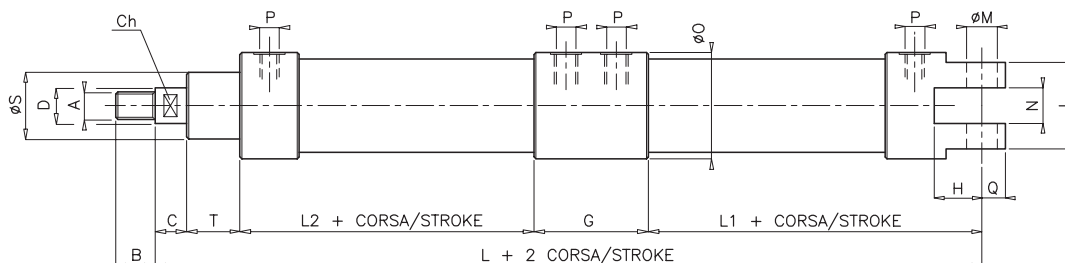


SERIE 300

diottalevi



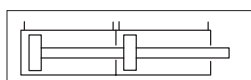
MOLTIPLICATORE DI FORZA FORCE MULTIPLIER



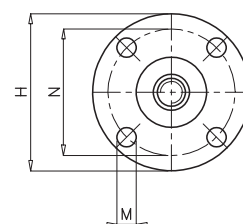
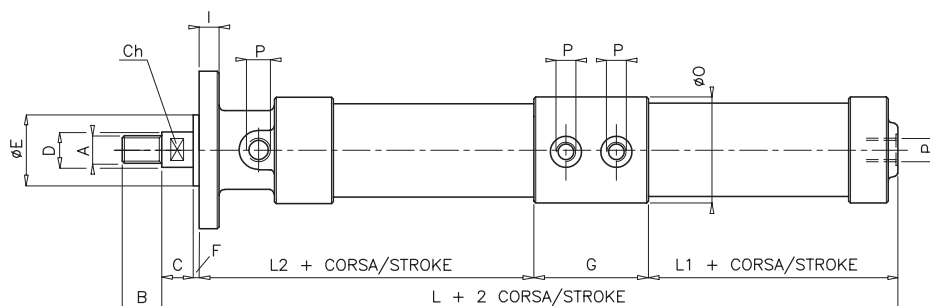
CILINDRO TANDEM* fissaggio cerniera posteriore codice. **301.20** Ø.corsa
TANDEM CYLINDER* rear bracket fixing code. **301.20** Ø.stroke

ALESAGGIO BORE	A	B	Ch	C	D	G	H	I	L	L1	L2	ØM	N	ØO	P	Q	ØS	T
20	M 6x1	9	6	8	8	64	10	22	156	38	30	5	8	30	1/8"	6	24	16
27	M 8x1,25	12	8	10	10	70	18	25	173	37	36	6	9	35	1/8"	7	28	20
35	M 10x1,5	15	10	12	12	64	22	32	181	43	38	8	12	45	1/8"	9	32	24
40	M 10x1,5	15	10	12	12	64	23	40	190	46	36	10	18	50	1/8"	10	36	32
50	M 12x1,75	18	12	15	14	74	27	50	207	51	35	12	25	63	1/8"	13	40	32
60	M 14x2	21	15	17	18	82	28	58	224	53	40	14	26	73	1/4"	15	45	32
70	M 16x2	24	17	18	20	86	35	71	240	63	38	16	35	84	1/4"	16	50	35
85	M 18x2,5	27	19	20	22	91	35	77	263	65	42	18	40	100	1/4"	18	60	45
100	M 20x2,5	30	20	23	24	96	44	81	293	77	47	20	40	116	1/4"	21	70	50

*A richiesta ulteriori camere di spinta / Further thrust chambers available on request



MOLTIPLICATORE DI FORZA FORCE MULTIPLIER



CILINDRO TANDEM* fissaggio flangia anteriore codice. **302.20** Ø.corsa
TANDEM CYLINDER* front flange fixing code. **302.20** Ø.stroke

ALESAGGIO BORE	A	B	Ch	C	D	E	F	G	H	I	L	L1	L2	M	N	ØO	P
20	M 6x1	9	6	8	8	23	2	64	50	4	140	22	44	4,5	39	30	1/8"
27	M 8x1,25	12	8	10	10	30	2	70	58	5	156	20	54	4,5	48	35	1/8"
35	M 10x1,5	15	10	12	12	36	2	64	65	6	163	25	60	5,5	54	45	1/8"
40	M 10x1,5	15	10	12	12	40	3	64	70	7	169	25	65	6,5	57	50	1/8"
50	M 12x1,75	18	12	15	14	54	4	74	87	8	184	28	63	6,5	75	63	1/8"
60	M 14x2	21	15	17	18	60	4	82	100	8	199	28	68	6,5	82	73	1/4"
70	M 16x2	24	17	18	20	70	4	86	119	10	207	30	69	8,5	100	84	1/4"
85	M 18x2,5	27	19	20	22	80	4	91	140	11	234	36	83	10,5	120	100	1/4"
100	M 20x2,5	30	20	23	24	88	4	96	160	12	255	39	93	10,5	137	116	1/4"

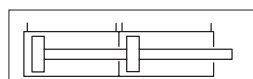
*A richiesta ulteriori camere di spinta / Further thrust chambers available on request

SERIE 300

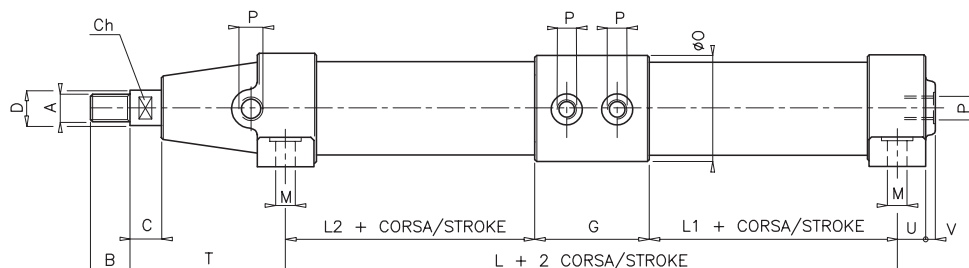
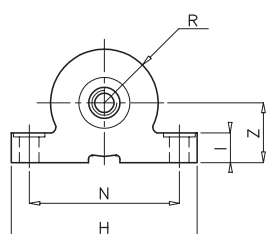
diottalevi



Cilindri con fissaggi integrati Integrated fixing cylinders



MOLTIPLICATORE DI FORZA FORCE MULTIPLIER

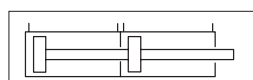


CILINDRO TANDEM* fissaggio a piedini codice. **303.20** Ø.corsa

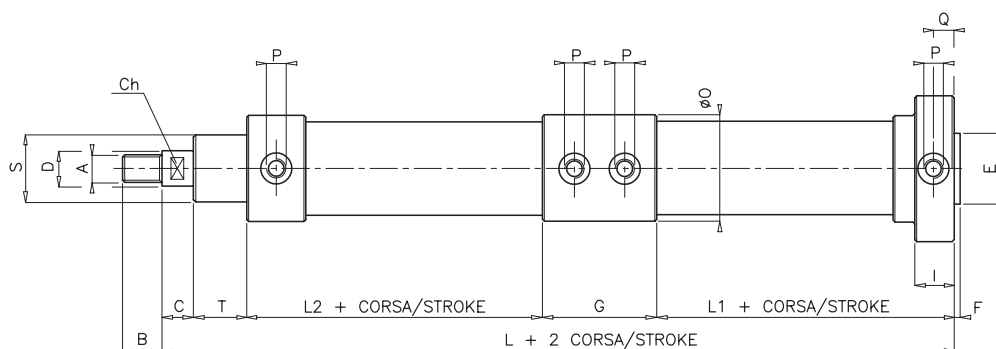
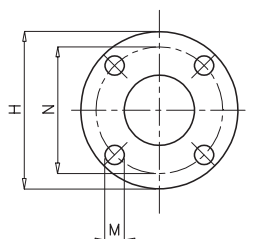
TANDEM CYLINDER* feet fixing code. **303.20** Ø.stroke

ALESAGGIO BORE	A	B	Ch	C	D	G	H	I	L	L1	L2	M	N	ØO	P	R	T	U	V	Z
27	M 8x1,25	12	8	10	10	70	55	10	97	11	16	4,5	45	35	1/8"	18	50	13	-	19
35	M 10x1,5	15	10	12	12	64	77	12	99	15	20	5,5	59	45	1/8"	23	54	9	3	24
40	M 10x1,5	15	10	12	12	64	86	13	93	14	15	5,5	65	50	1/8"	25	65,5	9,5	3	27
50	M 12x1,75	18	12	15	14	74	97	16	98	12	12	5,5	78	63	1/8"	32	70	11	5	31
60	M 14x2	21	15	17	18	82	110	17	110	14	14	6,5	90	73	1/4"	37	75	13	6	39
70	M 16x2	24	17	18	20	86	125	18	114	14	14	8,5	100	84	1/4"	42	77	13	6	44
85	M 18x2,5	27	19	20	22	91	147	20	131	20	20	8,5	120	100	1/4"	50	87	14	6	51
100	M 20x2,5	30	20	23	24	96	166	22	138	21	21	8,5	136	116	1/4"	58	99	14	6	59

*A richiesta ulteriori camere di spinta / Further thrust chambers available on request



MOLTIPLICATORE DI FORZA FORCE MULTIPLIER



CILINDRO TANDEM* fissaggio flangia posteriore codice. **304.20** Ø.corsa

TANDEM CYLINDER* rear flange fixing code. **304.20** Ø.stroke

ALESAGGIO BORE	A	B	Ch	C	D	E	F	G	H	I	L	L1	L2	M	N	ØO	P	Q	S	T
20	M 6x1	9	6	8	8	23	2	64	50	18	149	31	30	4,5	39	30	1/8"	9	24	16
27	M 8x1,25	12	8	10	10	30	2	70	60	19	167	31	36	4,5	48	35	1/8"	9,5	28	20
35	M 10x1,5	15	10	12	12	38	2	64	70	19	171	33	38	5,5	59	45	1/8"	9,5	32	24
40	M 10x1,5	15	10	12	12	40	3	64	75	21	177	33	36	5,5	62	50	1/8"	10,5	36	32
50	M 12x1,75	18	12	15	14	50	3	74	90	23	191	35	35	6,5	75	63	1/8"	11,5	40	32
60	M 14x2	21	15	17	18	62	3	82	100	26	210	39	40	8,5	86	73	1/4"	13	45	32
70	M 16x2	24	17	18	20	72	4	86	120	27	218	41	38	8,5	100	84	1/4"	13,5	50	35
85	M 18x2,5	27	19	20	22	80	4	91	140	28	242	44	42	10,5	120	100	1/4"	14	60	45
100	M 20x2,5	30	20	23	24	88	4	96	160	28	262	46	47	10,5	137	116	1/4"	14	70	50

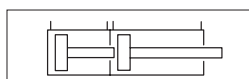
*A richiesta ulteriori camere di spinta / Further thrust chambers available on request

Cilindri con fissaggi integrati Integrated fixing cylinders

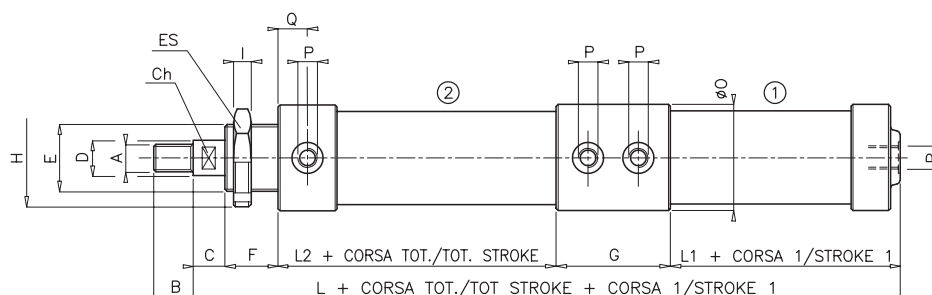


SERIE 300

diottalevi



STAZIONI MULTIPLE MULTIPLE STATION

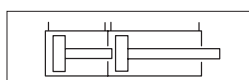


CILINDRO DOPPIA STAZIONE* fissaggio vite anteriore codice. **300.30** Ø.corsa totale**
DOUBLE STATION CYLINDER* front screw fixing code. **300.30** Ø.total stroke**

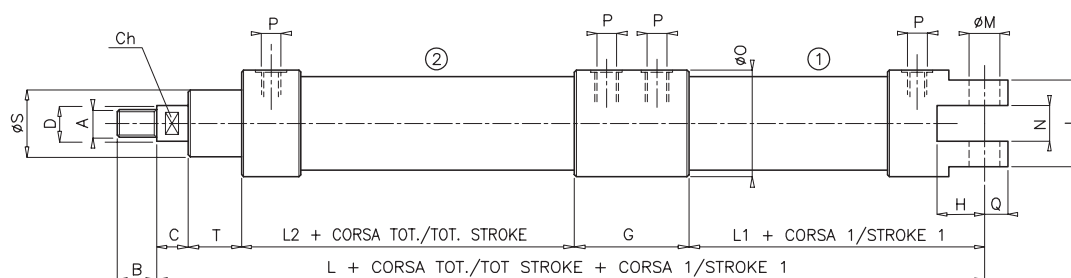
ALESAGGIO BORE	A	B	Ch	C	D	E	F	G	H	ES	I	L	L1	L2	ØO	P	Q
20	M 6x1	9	6	8	8	24x2	16	64	-	32	5	145	22	35	30	1/8"	9
27	M 8x1,25	12	8	10	10	28x2	20	70	-	36	6	156	20	36	35	1/8"	10
35	M 10x1,5	15	10	12	12	32x2	24	64	-	40	7	163	25	38	45	1/8"	10
40	M 10x1,5	15	10	12	12	36x2	32	64	-	46	8	174	25	41	50	1/8"	11
50	M 12x1,75	18	12	15	14	40x1,5	32	74	58	-	9	189	28	40	63	1/8"	11
60	M 14x2	21	15	17	18	45x1,5	32	82	65	-	10	204	28	45	73	1/4"	13
70	M 16x2	24	17	18	20	50x1,5	35	86	70	-	11	212	30	43	84	1/4"	12
85	M 18x2,5	27	19	20	22	60x2	45	91	80	-	11	239	36	47	100	1/4"	13
100	M 20x2,5	30	20	23	24	70x2	50	96	92	-	12	260	39	52	116	1/4"	14

* A richiesta ulteriori stazioni / Further stations on request

** In fase di ordinazione indicare anche la corsa della 1ª stazione / When ordering also indicate the 1st station stroke



STAZIONI MULTIPLE MULTIPLE STATION

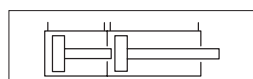


CILINDRO DOPPIA STAZIONE* fissaggio cerniera posteriore codice. **301.30** Ø.corsa totale**
DOUBLE STATION CYLINDER* rear bracket fixing code. **301.30** Ø.total stroke**

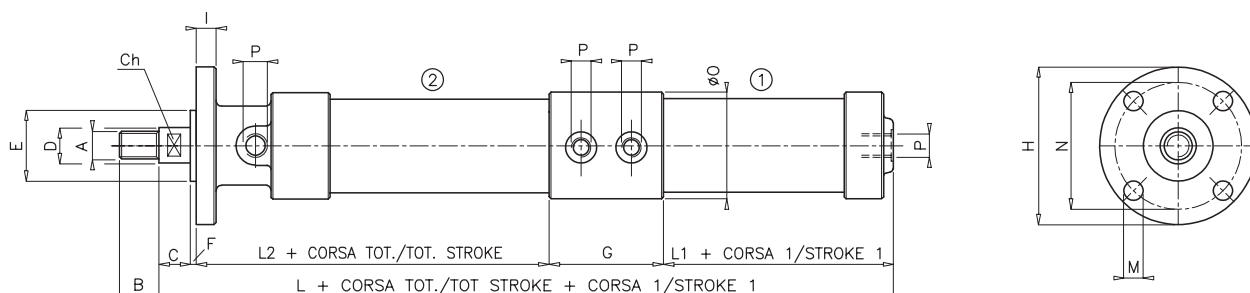
ALESAGGIO BORE	A	B	Ch	C	D	G	H	I	L	L1	L2	ØM	N	ØO	P	Q	ØS	T
20	M 6x1	9	6	8	8	64	10	22	161	38	35	5	8	30	1/8"	6	24	16
27	M 8x1,25	12	8	10	10	70	18	25	173	37	36	6	9	35	1/8"	7	28	20
35	M 10x1,5	15	10	12	12	64	22	32	181	43	38	8	12	45	1/8"	9	32	24
40	M 10x1,5	15	10	12	12	64	23	40	195	46	41	10	18	50	1/8"	10	36	32
50	M 12x1,75	18	12	15	14	74	27	50	211	51	40	12	25	63	1/8"	13	40	32
60	M 14x2	21	15	17	18	82	28	58	229	53	45	14	26	73	1/4"	15	45	32
70	M 16x2	24	17	18	20	86	35	71	245	63	43	16	35	84	1/4"	16	50	35
85	M 18x2,5	27	19	20	22	91	35	77	268	65	47	18	40	100	1/4"	18	60	45
100	M 20x2,5	30	20	23	24	96	44	81	298	77	52	20	40	116	1/4"	21	70	50

* A richiesta ulteriori stazioni / Further stations on request

** In fase di ordinazione indicare anche la corsa della 1ª stazione / When ordering also indicate the 1st station stroke



STAZIONI MULTIPLE MULTIPLE STATIONS

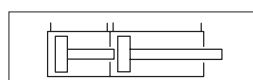


CILINDRO DOPPIA STAZIONE* fissaggio flangia anteriore codice. **302.30** Ø.corsa totale**
DOUBLE STATION CYLINDER* front flange fixing code. **302.30** Ø.total stroke**

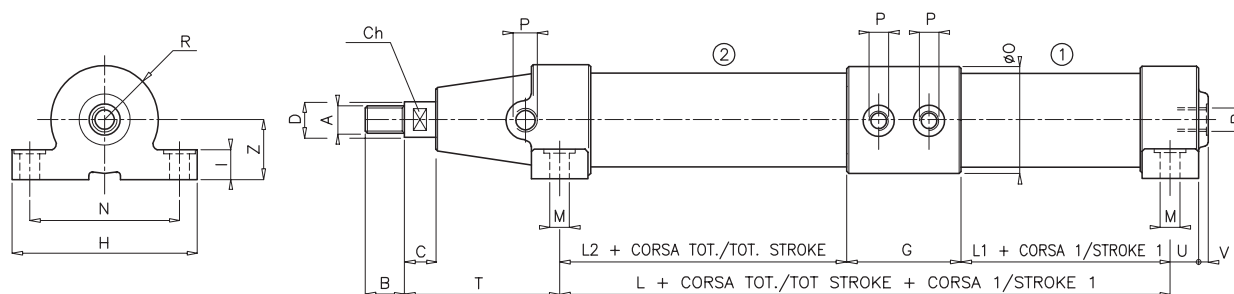
ALESAGGIO BORE	A	B	Ch	C	D	E	F	G	H	I	L	L1	L2	M	N	ØO	P
20	M 6x1	9	6	8	8	23	2	64	50	4	145	22	49	4,5	39	30	1/8"
27	M 8x1,25	12	8	10	10	30	2	70	58	5	156	20	54	4,5	48	35	1/8"
35	M 10x1,5	15	10	12	12	36	2	64	65	6	163	25	60	5,5	54	45	1/8"
40	M 10x1,5	15	10	12	12	40	3	64	70	7	174	25	70	6,5	57	50	1/8"
50	M 12x1,75	18	12	15	14	54	4	74	87	8	189	28	68	6,5	75	63	1/8"
60	M 14x2	21	15	17	18	60	4	82	100	8	204	28	73	6,5	82	73	1/4"
70	M 16x2	24	17	18	20	70	4	86	119	10	212	30	74	8,5	100	84	1/4"
85	M 18x2,5	27	19	20	22	80	4	91	140	11	239	36	88	10,5	120	100	1/4"
100	M 20x2,5	30	20	23	24	88	4	96	160	12	260	39	98	10,5	137	116	1/4"

* A richiesta ulteriori stazioni / Further stations on request

** In fase di ordinazione indicare anche la corsa della 1ª stazione / When ordering also indicate the 1st station stroke



STAZIONI MULTIPLE MULTIPLE STATIONS



CILINDRO DOPPIA STAZIONE* fissaggio a piedini codice. **303.30** Ø.corsa totale**
DOUBLE STATION CYLINDER* foot fixing code. **303.30** Ø.total stroke**

ALESAGGIO BORE	A	B	Ch	C	D	G	H	I	L	L1	L2	M	N	ØO	P	R	T	U	V	Z
27	M 8x1,25	12	8	10	10	70	55	10	97	11	16	4,5	45	35	1/8"	18	50	13	-	19
35	M 10x1,5	15	10	12	12	64	77	12	99	15	20	5,5	59	45	1/8"	23	54	9	3	24
40	M 10x1,5	15	10	12	12	64	86	13	98	14	20	5,5	65	50	1/8"	25	65,5	9,5	3	27
50	M 12x1,75	18	12	15	15	74	97	16	103	12	17	5,5	78	63	1/8"	32	70	11	5	31
60	M 14x2	21	15	17	18	82	110	17	115	14	19	6,5	90	73	1/4"	37	75	13	6	39
70	M 16x2	24	17	18	20	86	125	18	119	14	19	8,5	100	84	1/4"	42	77	13	6	44
85	M 18x2,5	27	19	20	22	91	147	20	136	20	25	8,5	120	100	1/4"	50	87	14	6	51
100	M 20x2,5	30	20	23	24	96	166	22	143	21	26	8,5	136	116	1/4"	58	99	14	6	59

* A richiesta ulteriori stazioni / Further stations on request

** In fase di ordinazione indicare anche la corsa della 1ª stazione / When ordering also indicate the 1st station stroke

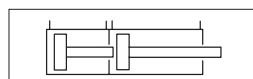
Cilindri con fissaggi integrati

Integrated fixing cylinders



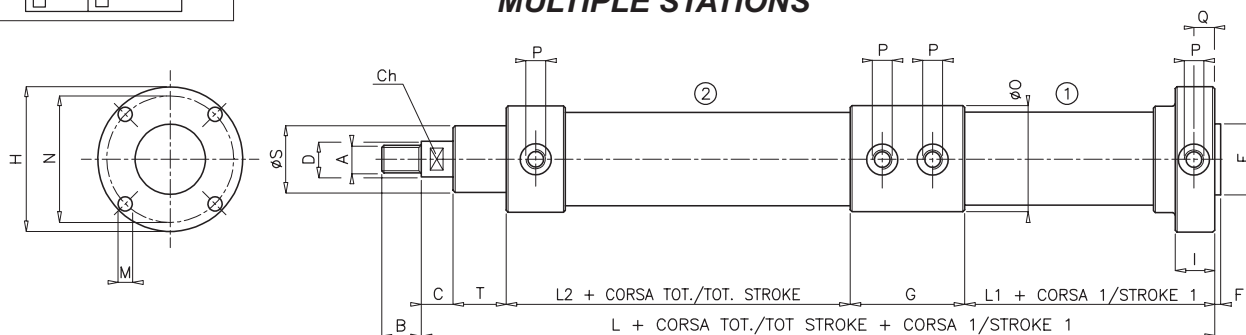
SERIE 300

diottalevi



STAZIONI MULTIPLE

MULTIPLE STATIONS

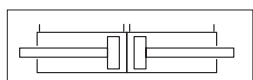


CILINDRO DOPPIA STAZIONE* fissaggio flangia posteriore codice. **304.30** Ø.corsa totale**
DOUBLE STATION CYLINDER* rear flange fixing code. **304.30** Ø.total stroke**

ALESAGGIO BORE	A	B	Ch	C	D	E	F	G	H	I	L	L1	L2	M	N	ØO	P	Q	ØS	T
20	M 6x1	9	6	8	8	23	2	64	50	18	154	31	35	4,5	39	30	1/8"	9	24	16
27	M 8x1,25	12	8	10	10	30	2	70	60	19	167	31	36	4,5	48	35	1/8"	9,5	28	20
35	M 10x1,5	15	10	12	12	38	2	64	70	19	171	33	38	5,5	59	45	1/8"	9,5	32	24
40	M 10x1,5	15	10	12	12	40	3	64	75	21	182	33	41	5,5	62	50	1/8"	10,5	36	32
50	M 12x1,75	18	12	15	14	50	3	74	90	23	196	35	40	6,5	75	63	1/8"	11,5	40	32
60	M 14x2	21	15	17	18	62	3	82	100	26	215	39	45	8,5	86	73	1/4"	13	45	32
70	M 16x2	24	17	18	20	72	4	86	120	27	223	41	43	8,5	100	84	1/4"	13,5	50	35
85	M 18x2,5	27	19	20	22	80	4	91	140	28	247	44	47	10,5	120	100	1/4"	14	60	45
100	M 20x2,5	30	20	23	24	88	4	96	160	28	267	46	52	10,5	137	116	1/4"	14	70	50

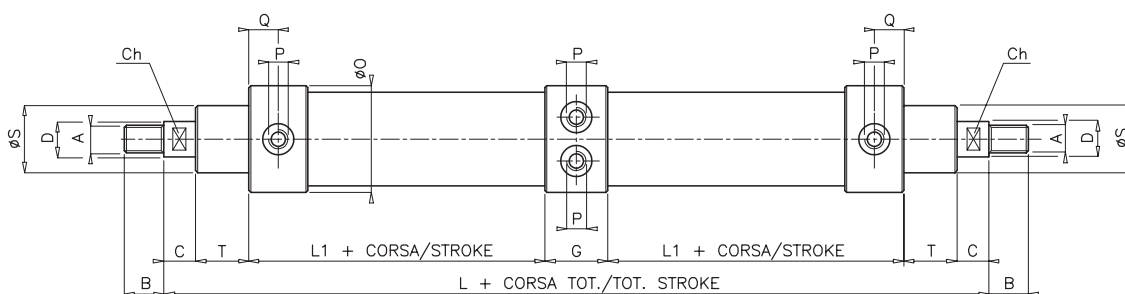
* A richiesta ulteriori stazioni / Further stations on request

** In fase di ordinazione indicare anche la corsa della 1ª stazione / When ordering also indicate the 1st station stroke



DOPPIO

DOUBLE



CILINDRO DOPPIO fissaggio su stelo codice. **305.40** Ø.corsa totale*
DOUBLE CYLINDER fixing on piston rod code. **305.40** Ø.total stroke*

ALESAGGIO BORE	A	B	Ch	C	D	G	L	L1	ØO	P	Q	ØS	T
20	M 6x1	9	6	8	8	29	137	30	30	1/8"	9	24	16
27	M 8x1,25	12	8	10	10	35	157	31	35	1/8"	10	28	20
35	M 10x1,5	15	10	12	12	36	174	33	45	1/8"	10	32	24
40	M 10x1,5	15	10	12	12	36	196	36	50	1/8"	11	36	32
50	M 12x1,75	18	12	15	14	43	207	35	63	1/8"	11	40	32
60	M 14x2	21	15	17	18	46	224	40	73	1/4"	13	45	32
70	M 16x2	24	17	18	20	50	232	38	84	1/4"	12	50	35
85	M 18x2,5	27	19	20	22	52	266	42	100	1/4"	13	60	45
100	M 20x2,5	30	20	23	24	52	292	47	116	1/4"	14	70	50

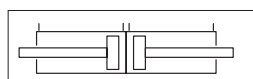
* In fase di ordinazione indicare sempre le due corse separatamente / When ordering always indicate the two strokes separately

SERIE 300

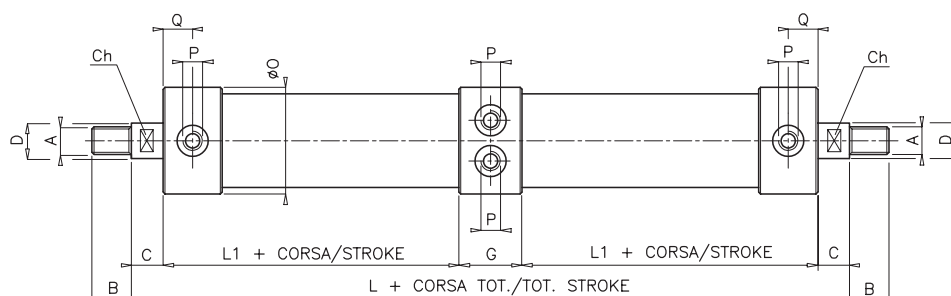
diottalevi



Cilindri con fissaggi integrati Integrated fixing cylinders



DOPPIO RIDOTTO DOUBLE REDUCED

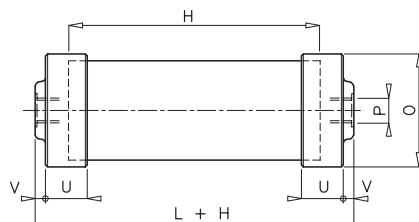
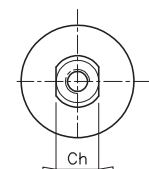
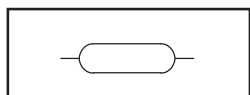


Solo a doppio effetto
Only double-acting

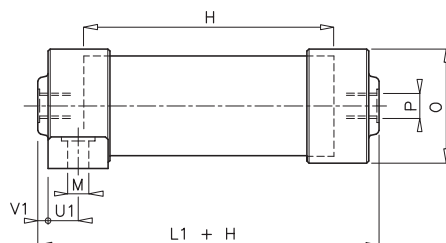
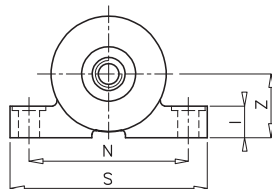
CILINDRO DOPPIO serie ridotta fissaggio su stelo codice. **305.44** Ø.corsa totale*
DOUBLE CYLINDER reduced series fixing on piston rod code. **305.44** Ø.total stroke*

ALESAGGIO BORE	A	B	Ch	C	D	G	L	L1	ØO	P	Q
20	M 6x1	9	6	8	8	29	111	33	30	1/8"	12
27	M 8x1,25	12	8	8	10	35	117	33	35	1/8"	13
35	M 10x1,5	15	10	11	12	36	128	35	45	1/8"	12
40	M 10x1,5	15	10	12	12	36	132	36	50	1/8"	11
50	M 12x1,75	18	12	14	14	43	147	38	63	1/8"	13,5
60	M 14x2	21	15	17	18	46	164	42	73	1/4"	15
70	M 16x2	24	17	16	20	50	172	45	84	1/4"	18
85	M 18x2,5	27	19	19	22	52	188	49	100	1/4"	20
100	M 20x2,5	30	20	20	24	52	192	50	116	1/4"	19

* In fase di ordinazione indicare sempre le due corse separatamente / When ordering always indicate the two strokes separately

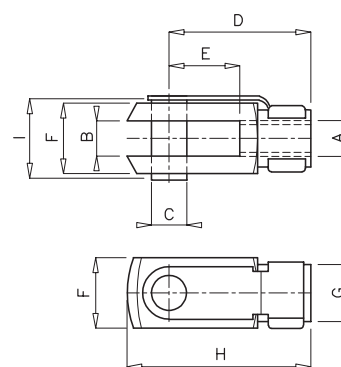
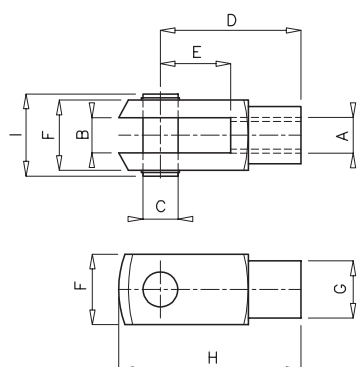


CAPACITA' A FONDELLI codice. **307.10** Ø .H
CAP CAPACITY code. **307.10** Ø .H



CAPACITA' A PIEDINO codice. **307.20** Ø .H
FOOT CAPACITY code. **307.20** Ø .H

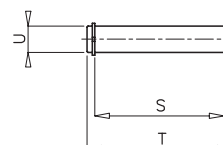
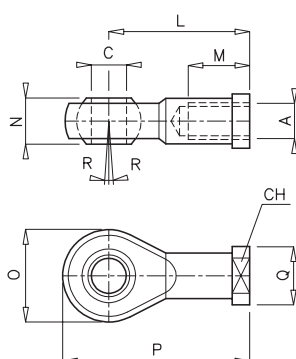
ALESAGGIO BORE	Ch	I	L	L1	M	N	O	P	S	U	U1	V	V1	Z	H min.	CAPACITA' l x cm di H CAPACITY l x cm of H
20	15	-	15	-	-	-	30	1/8"	-	10,5	-	4	-	-	20	0,0031
27	17	10	14	18	4,5	45	35	1/8"	55	13	13	4	-	19	25	0,0057
35	19	12	20	22	5,5	59	45	1/8"	77	15	9	5	3	24	25	0,0096
40	22	13	22	24	5,5	65	50	1/8"	86	16	9,5	5	3	27	25	0,0126
50	30	16	26	26	5,5	78	63	1/8"	97	20	11	6	5	31	30	0,0196
60	30	17	24	29	6,5	90	73	1/4"	110	21	13	5	6	39	30	0,0283
70	30	18	26	29	8,5	100	84	1/4"	125	22	13	6	6	44	35	0,0385
85	40	20	34	38	8,5	120	100	1/4"	147	24	14	8	6	51	35	0,0567
100	45	22	38	40	8,5	136	116	1/4"	166	26	14	8	6	59	35	0,0785



ESCLUSI ALESAGGI 60 E 85
EXCLUDING BORES 60 AND 85

FORCELLA CON PERNO codice. **309.01** Ø .cilindro
FORK WITH PIN code. **309.01** Ø .cylinder

FORCELLA CON CLIPS codice. **309.02** Ø .cilindro
FORK WITH CLIPS code. **309.02** Ø .cylinder



SNODO SFERICO codice. **309.03** Ø .cilindro
BALL JOINT code. **309.03** Ø .cylinder

PERNO CERNIERA codice. **309.04** Ø .cilindro
BRACKET PIN code. **309.04** Ø .cylinder

RICAMBI SPARES

Per tutte le serie di cilindri sono previsti **KIT DI GUARNIZIONI DI RICAMBIO** in gomma **NBR** e in **VITON** per alte temperature.
For all cylinder series are provided **SPARE SEAL KITS**. **NBR** rubber or **VITON** for high temperatures.

ALESAGGIO BORE	A	B	C	CH	D	E	F	G	H	I	L	M	N	O	P	Q	R	S	T	U
20	M 6x1	6	6	11	24	12	12	10	31	19	30	12	9	20	40	13	13°	22,5	29	5
27	M 8x1,25	8	8	14	32	16	16	14	42	23	36	16	12	24	48	16	14°	25,5	32	6
35	M 10x1,5	10	10	17	40	20	20	18	52	28	43	20	14	29	57,5	19	13°	32,5	39	8
40	M 10x1,5	10	10	17	40	20	20	18	52	28	43	20	14	29	57,5	19	13°	40,5	47	10
50	M 12x1,75	12	12	19	48	24	24	20	61	31	50	22	16	34	67	22	13°	50,5	57	12
60	M 14x2	14	14	22	56	27	27	24	72	35	57	25	19	38	76	25	16°	58,5	66	14
70	M 16x2	16	16	22	64	32	32	26	82	40	64	28	21	42	85	27	15°	71,5	79	16
85	M 18x2,5	18	18	27	72	36	36	30	94	46	71	32	23	46	94	31	15°	78,5	88	18
100	M 20x2,5	20	20	32	80	40	40	34	105	51	77	33	25	50	102	34	14°	82	91	20

