



Medium Pressure In Line Filters Cartridge Type

Suction or Return Line Application
Model DH & DHA (NPT & SAE Ports)

Specifications

- Working pressure 350 PSI (24 Bar) 80 PSI ΔP w/o bypass
- Operating temperatures -22°F to +212°F (-32°C to +100°C)
- Flows to 75 GPM (280 LPM) return
- 1/2", 3/4", 1", 1 1/4", 1 1/2" Ports
- Cellulose and wire mesh elements
- Aluminum casting
- Buna Seals
- Compatible with mineral oils HH, HL, HM, HR, HV, HG, synthetic fluids A and M series types HS, HFDR, HFDS, HFUD and water based emulsions HFAE, HFAS according to ISO 6743/4
- Aluminum bowl with SAE drain plug
- 2.5 (lbs) 1.1 (kg), 5.5lbs, (2.5 kgs) shipping weight

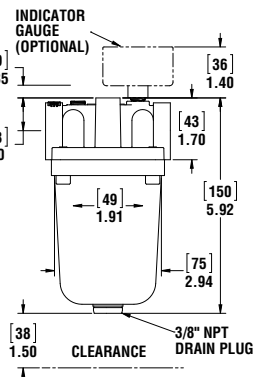
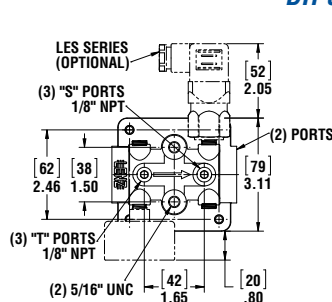
Options

- NPT or SAE Ports
- 10, 25, micron cellulose, synthetic elements
- 60, 100, 200 wire mesh
- Visual or electrical indicators
- 5, 15, 25 PSID, blocked bypass options for return or suction
- Optional Viton, EPR seals
- Viton sTC

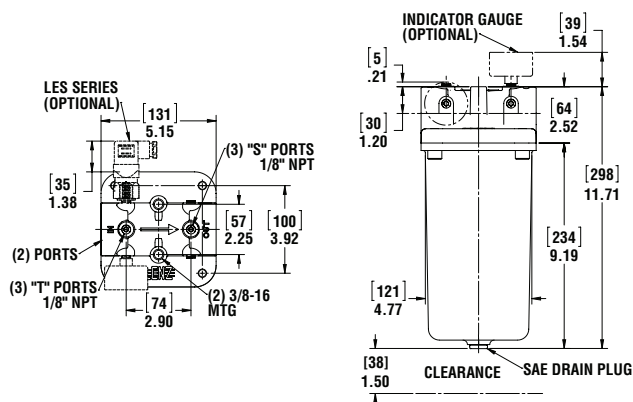
eals required for synthetic fluid



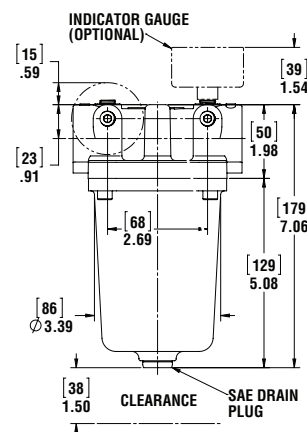
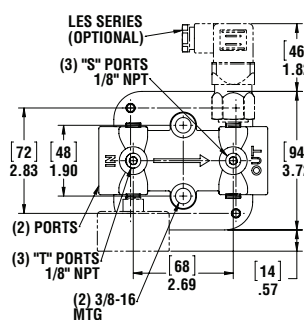
DH-500



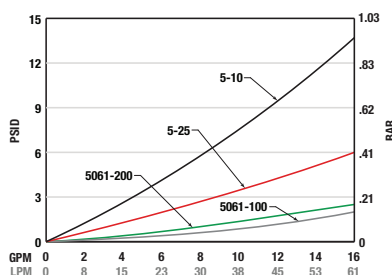
DH-1250, DH-1500



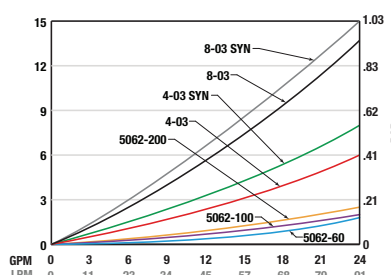
DH-750, DH-1000

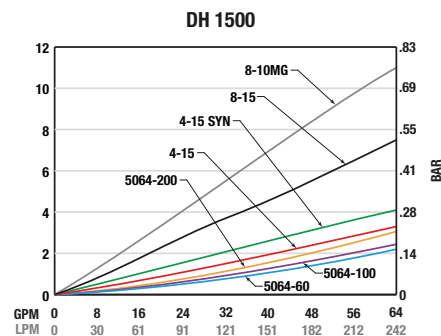
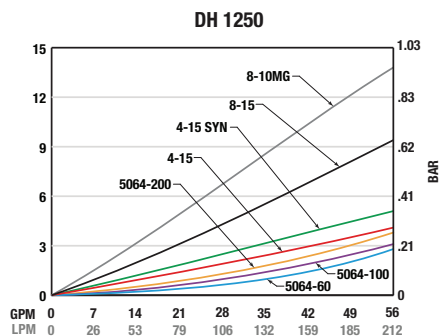
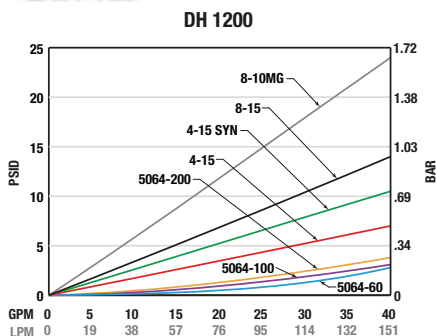


DH 500



DH 750/1000





Temperature 100°F Viscosity 150 SUS
Average pressure drop through clean assembly

Assembly Ordering Code

DH — 750 — 800 — PR — V — T

Series		Port		Media		Bypass		Ind. Ports	
DH	NPT	500	1/2"	800	10 Micron Cellulose	RR	Return 25 PSI	Omit	None
DHA	SAE	750	3/4"	400	25 Micron Cellulose	PR	Return 15 PSI	T	1/8 NPT Return
		1000	1"	500	25 Micron Synthetic	VR	Suction 5 PSI	S	1/8 NPT Suction
		1200	1"	300	10 Micron Synthetic	Omit No Bypass		T, S	All Ports
		1250	1 1/4"	60	60 SS Wire Mesh				
		1500	1 1/2"	100	100 SS Wire Mesh				
				200	200 SS Wire Mesh				
				700	700 SS Wire Mesh				

Seals	
Omit	Buna
V	Viton
EPR	Ethylene Propylene

For indicator gauge specifications and
ordering information see pages 38a-39a

**Indicators ordered and shipped separately*



Replacement Elements

Model	Series	Media	in ²	cm ²	Rating B(X)=2/20/75	Dirt Holding Capacity
5-10	DH-500	10 Micron Cellulose	143	920	10μ/25μ/32μ	4
5-25	DH-500	25 Micron Cellulose	143	920	43μ/46μ/54μ	5.7
8-03	DH-750, 1000	10 Micron Cellulose	342	2206	10μ/25μ/32μ	10
8-03 SYN	DH-750, 1000	10 Micron Synthetic	250	1575	4μ/10μ/12μ	6
4-03	DH-750, 1000	25 Micron Cellulose	342	2206	43μ/46μ/54μ	14
4-03 SYN	DH-750, 1000	25 Micron Synthetic	250	1575	7μ/16μ/23μ	7
8-15	DH-1200, 1250, 1500	10 Micron Cellulose	1122	7237	10μ/25μ/32μ	34
8-10MG	DH-1200, 1250, 1500	10 Micron Synthetic	798	5150	3μ/10μ/12μ	47
4-15	DH-1200, 1250, 1500	25 Micron Cellulose	1122	7237	43μ/46μ/54μ	45
4-15 SYN	DH-1200, 1250, 1500	25 Micron Synthetic	798	5150	7μ/16μ/23μ	55
5061-100	DH-500	100 SS Wire Mesh	55	360	141μ	N/A
5061-200	DH-500	200 SS Wire Mesh	55	360	74μ	N/A
5062-200	DH-750, 1000	200 SS. Wire Mesh	120	774	74μ	N/A
5062-100	DH-750, 1000	100 SS Wire Mesh	120	774	140μ	N/A
5062-700	DH-750, 1000	700 SS Wire Mesh	87	560	25μ	N/A
5062-60	DH-750, 1000	60 SS Wire Mesh	120	774	262μ	N/A
5064-200	DH-1200, 1250, 1500	200 SS Wire Mesh	325	2096	74μ	N/A
5064-60	DH-1200, 1250, 1500	60 SS Wire Mesh	325	2096	262μ	N/A
5064-100	DH-1200, 1250, 1500	100 SS Wire Mesh	325	2096	144μ	N/A
5064-700	DH-1200, 1250, 1500	700 SS Wire Mesh	279	1800	25μ	N/A

Beta Rating of 2 = 50% Efficiency
Beta Rating of 20 = 95% Efficiency
Beta Rating of 75 = 98.7% Efficiency
Note: 45 PSI Pressure Drop Maximum
Without Bypass Valve In Filter Head

Consult factory for other medias, and high collapse medias, element lengths.