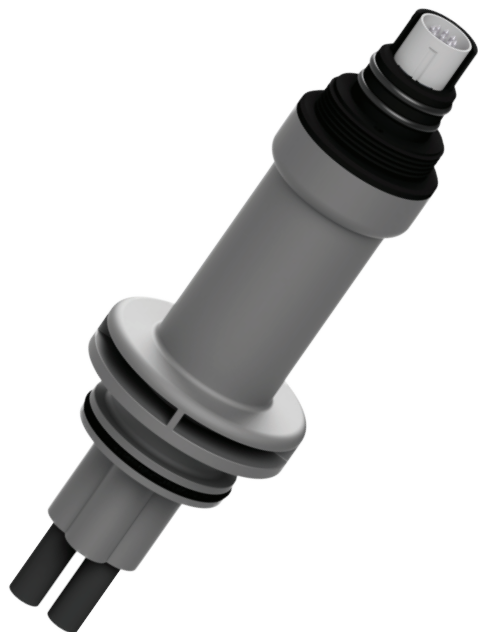




CS300 Process Graphite Conductivity Sensor



Ideal for Light Industrial Process Applications

- Keyed flange ensures proper orientation for best results
- Temperature compensation ensures optimal performance

Reduce Maintenance Costs

- Quick-disconnect cable to allow for cables to remain in place
- Flat measurement surface resists coating
- Calibrations are even faster when used with Sensorex Electronic Modules

Specifications

Temperature / Pressure Rating

- 60° C (140° F)
- 100 psig

Temperature Compensation

See ordering matrix.

Wetted Materials

- CPVC
- Graphite
- Viton®

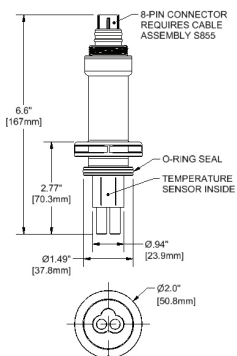
Cell Constants

0.1cm⁻¹ and 1.0cm⁻¹

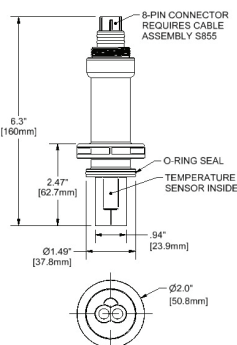
VITON® is a registered trademark of The Chemours Company.

Smart Sensor-Capable via Sensorex Electronic Modules

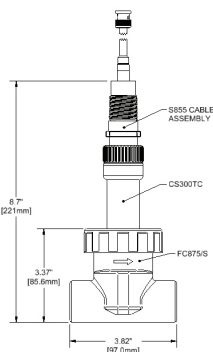




CS300-B



CS300-C



CS300 with Cable and Tee

Model # CS300 Ordering Matrix

Description

CELL CONSTANT

- 0.1/cm ●
- 1.0/cm
- Custom Modification (customer-specified)
- Cannot be used with Flow Cells FC875/T or FC875/S.

TEMPERATURE COMPENSATION

- PT1000 RTD
- PT100 RTD ●
- 10K Thermistor ●
- 30K Thermistor ●
- Custom Modification (customer-specified)
- Not compatible with Sensorex Electronic Module.

CABLE LENGTH

- No Selection – Replacement Sensor
- 10 ft. (3m) S855 ●
- 20 ft. (6m) S855 ●
- 10 ft. (3m) S856 ●
- 20 ft. (6m) S856 ●
- Custom Modification (customer-specified)
- Quick-disconnect cable NOT COMPATIBLE with Sensorex Electronic Module.
- Quick-disconnect cable COMPATIBLE with Sensorex Electronic Module.

CABLE TERMINATION CONNECTOR

- Tinned Leads
- Custom Modification (customer-specified)

BRANDING

- Sensorex-Branded
- No Branding
- Custom Modification (customer-specified)

Code

X X X X X

**B
C
M**

**1
2
3
4
M**

**N
EC
ED
FC
FD
M**

**3
M**

**A
B
M**

For example, choosing "0.1/cm" under Cell Constant would be **B**, "PT1000 RTD" for Temperature Compensation would be **1**, "10 feet (3m) S856" under Cable Length would be **FC**, "Tinned Leads" under Cable Termination Connector would be **3**, and "Sensorex-Branded" under Branding would be **A**. The order code would then be **"CS300 - B - 1 - FC - 3 - A"**.