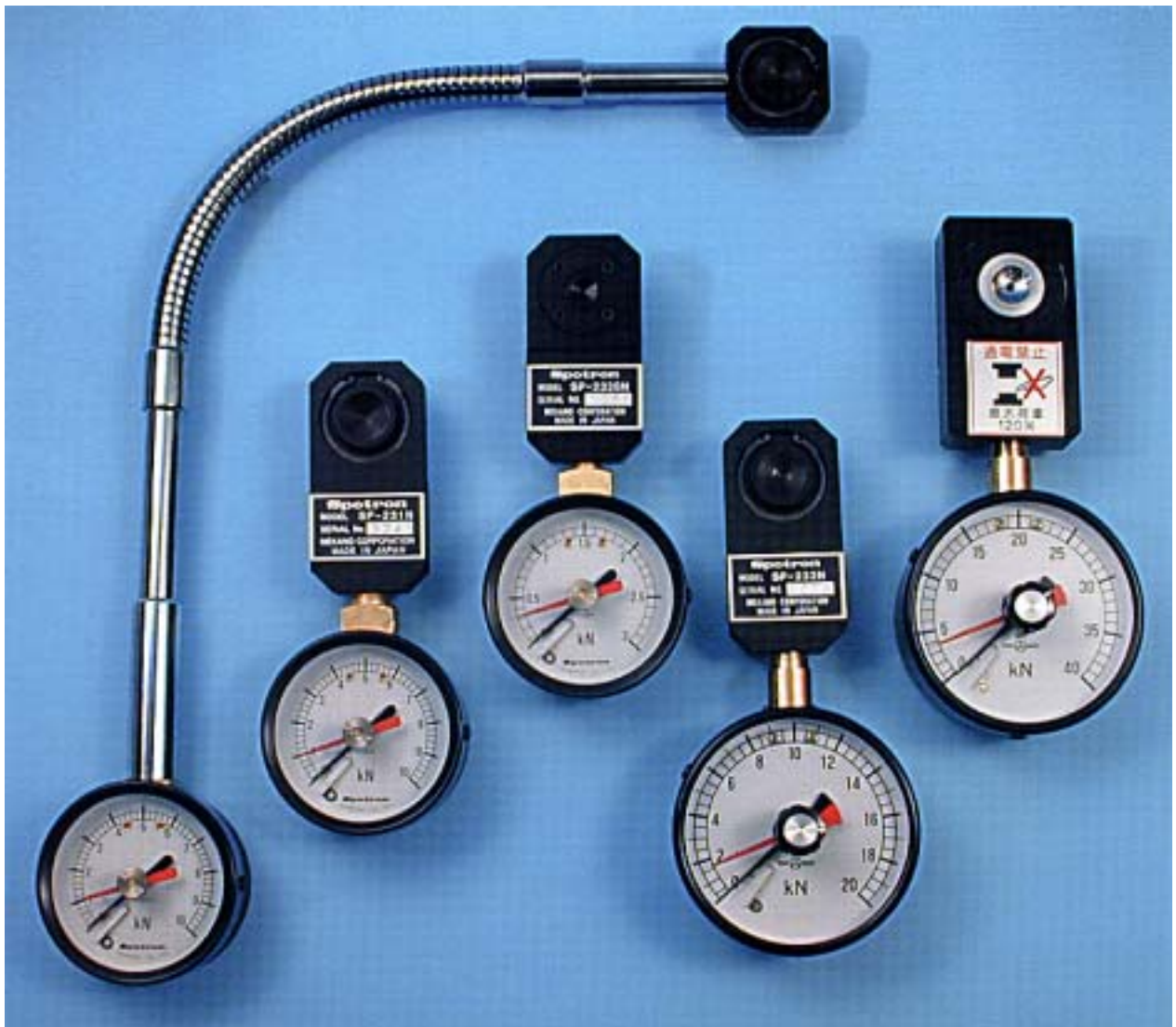


SP - 231N SERIES HYDRAULIC WELD FORCE GAUGE

FOR GENERAL RESISTANCE WELD
COMPACT, LIGHTWEIGHT, EASY



Outline:

For getting better result of weld, it is necessary to control fully pressure force put in between electrodes which is one of the three important factors for welding conditions.

The weld force gauge of SP-231N series employs closed and sealed hydraulic system offering compactness, light weight and simplicity of handling.

Pressure receiving section is fabricated with insulated plate which safeguards against weld current on if applied by any chance.

In accordance with the international standard, unit of N(Newton) is adopted and indicated on the meter.

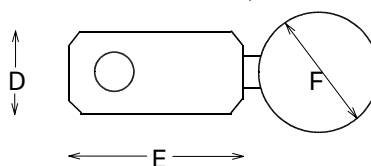
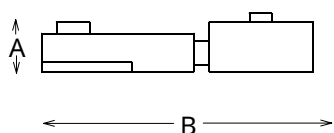
High reliability of this gauge supports severe quality control.

Features:

- (1) Seven types of variations fitted to the weld force are available.
- (2) Be indicated with the international standard, unit of N(Newton).
- (3) Closed and sealed hydraulic system offers small size, light weight and easy handlings.
- (4) Insuration type to protect to a certain extent against weld current on when carelessly applied.
- (5) Adoption of parting needle except SP-232N can point at maximum value of pressure force. (Optional for SP-232N)
- (6) SP-241N has a flexible neck which is bendable from straight to U-form.
- (7) With accessory of a hardcase convenient for keeping and custody.

Specifications:

Model		SP-233SN	SP-236N	SP-231N	SP-232N	SP-233-3T	SP-233-4T	SP-241N
Range		0.25 ~ 3kN	0.3 ~ 6kN	0.5 ~ 10kN	1 ~ 20kN	1.5 ~ 30kN	2 ~ 40kN	0.5 ~ 10kN
Min.Scale		100N(10kgf)	200N(20kgf)	200N(20kgf)	1kN(100kgf)	1kN(100kgf)	2kN(200kgf)	200N(20kgf)
Accuracy		± 3 %F.S.						
Weight (g)	Unit	4 0 0	4 1 0	5 0 0	6 6 0	9 0 0	9 0 0	5 8 0
	Case	4 0 0						6 5 0
Dimen- sions (mm)	A	1 0	1 3	1 8	1 8	2 5	2 5	1 8
	B	1 5 3	1 5 4	1 5 5	1 7 2	1 7 2	1 7 2	4 9 6
	C	3 8	3 8	3 8	4 0	5 2	5 2	3 8
	D	3 8	3 8	3 8	3 8	4 4	4 4	3 6
	E	7 1	7 6	7 6	7 6	7 6	7 6	3 6
	F	6 5	6 5	6 5	7 8	7 8	7 8	6 5



-- Appearance and specifications are subject to change for improvement without notice.--