

Fully integrated rotary valve position monitors that are certified to intrinsically safe standards. They offer a choice of enclosure materials and switching options.

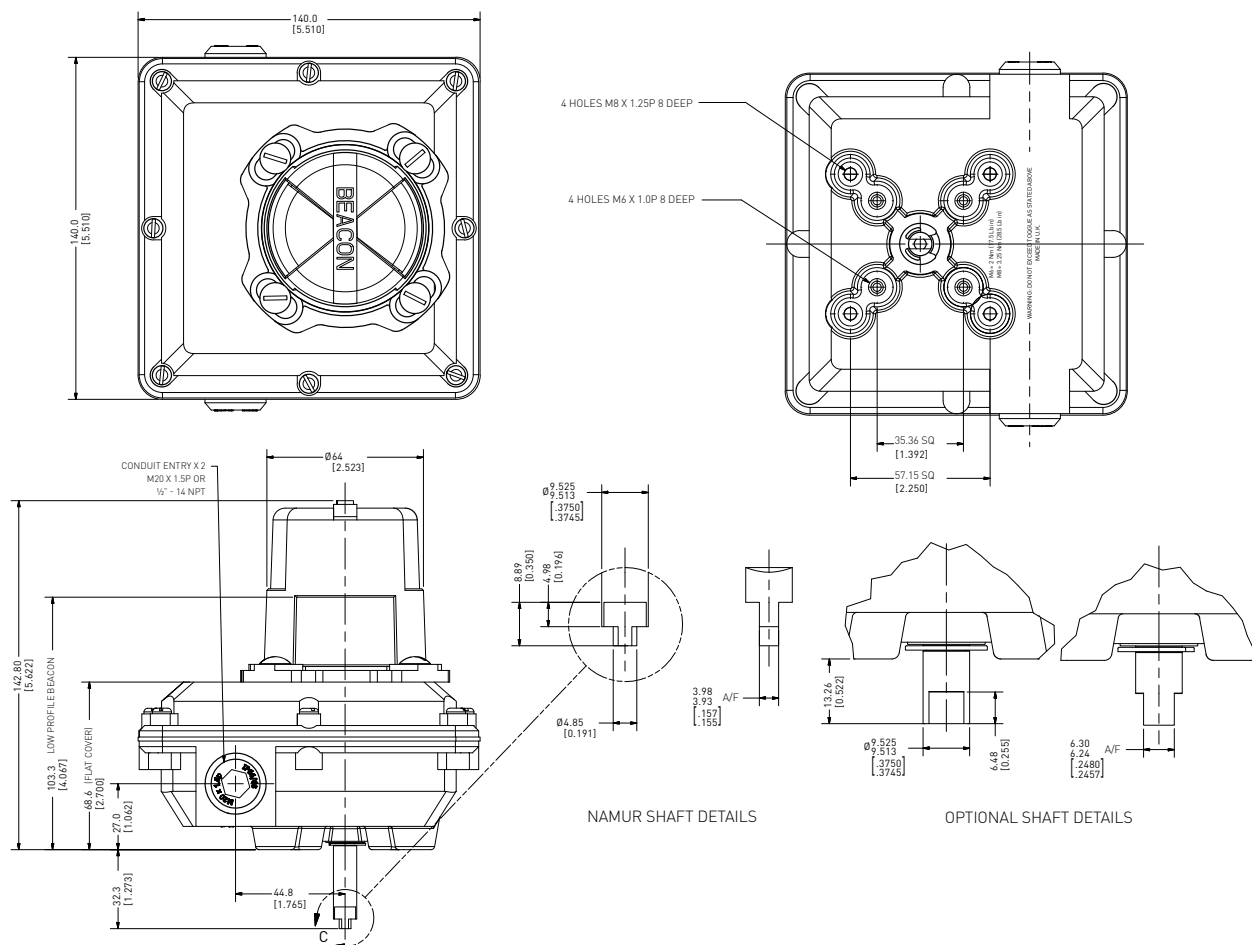


Technical Data	
Agency approvals	
Area classification (ATEX/IEC)	
3000 Series	Ex II 1GD Exia IIC T* Ga Exia IIIC T120°C Da IP6X
3300/8300 Series	Ex II *GD Exia II* T* G* Ex t IIIC T135°C Da IP6X
Enclosure standards (IEC)	
All enclosures	IP66/67
3000/3300 Series resin enclosures	IP68
Switches	
All Models	V3 SPDT mechanical switches, gold plated contacts V3 inductive NAMUR proximity sensors Magnum, SPDT (hermetically sealed proximity type) switches with rhodium contacts
Enclosures	
All Models	Engineered resin Aluminium Stainless steel

Features

- Intrinsically Safe design meeting a wide range of worldwide approvals.
- Inductive NAMUR sensor rated for IS applications.
- Magnum switches with rhodium contacts for use with low power I/O's for longer contact life.
- Strong durable Beacon™ offers 360° visual indication available in a choice of styles and colors.
- Touch set cams are hand adjustable, spring loaded and self-locking providing quick calibration of position switches and sensors.
- Terminal strips are pre-wired and numbered with generous working space for ease of use.
- Additional conduit for easy field wiring and mounting accessories as standard.
- Wide range of switches and sensors.
- Position transmitter option.
- Switch stabilisation plate.
- Standardized mounting pattern for easy adaptation to common bracketry.
- Range of drive shaft options.
- Engineered resin enclosure is robust yet lightweight; allows broad operating temperatures and provides exceptional chemical, UV and impact resistance.
- Aluminium enclosures with ultra-low copper content (0.2% maximum) ensure robust performance in corrosive environments.
- Rugged stainless steel enclosure.
- IP rated plugs certified where applicable.

3000 Series resin enclosure dimensions



Dimensions in mm, where available imperial dimension (inches) in parentheses

Technical specifications

Materials of construction

Enclosure	Engineered resin
Shaft and hardware	Stainless steel
Bushing	Nylon
Beacon visual indicator	Co-polyester

Drive shaft

Standard	Double-D with ¼" A/F
Option	NAMUR standard VDI/VDE 3845

Available switches

V3 SPDT mechanical switches, gold plated contacts
V3 inductive NAMUR proximity sensors
Magnum, SPDT (hermetically sealed proximity type) switches with rhodium contacts

Please consult your sales office for any other requirements

Notes

Conduit entries

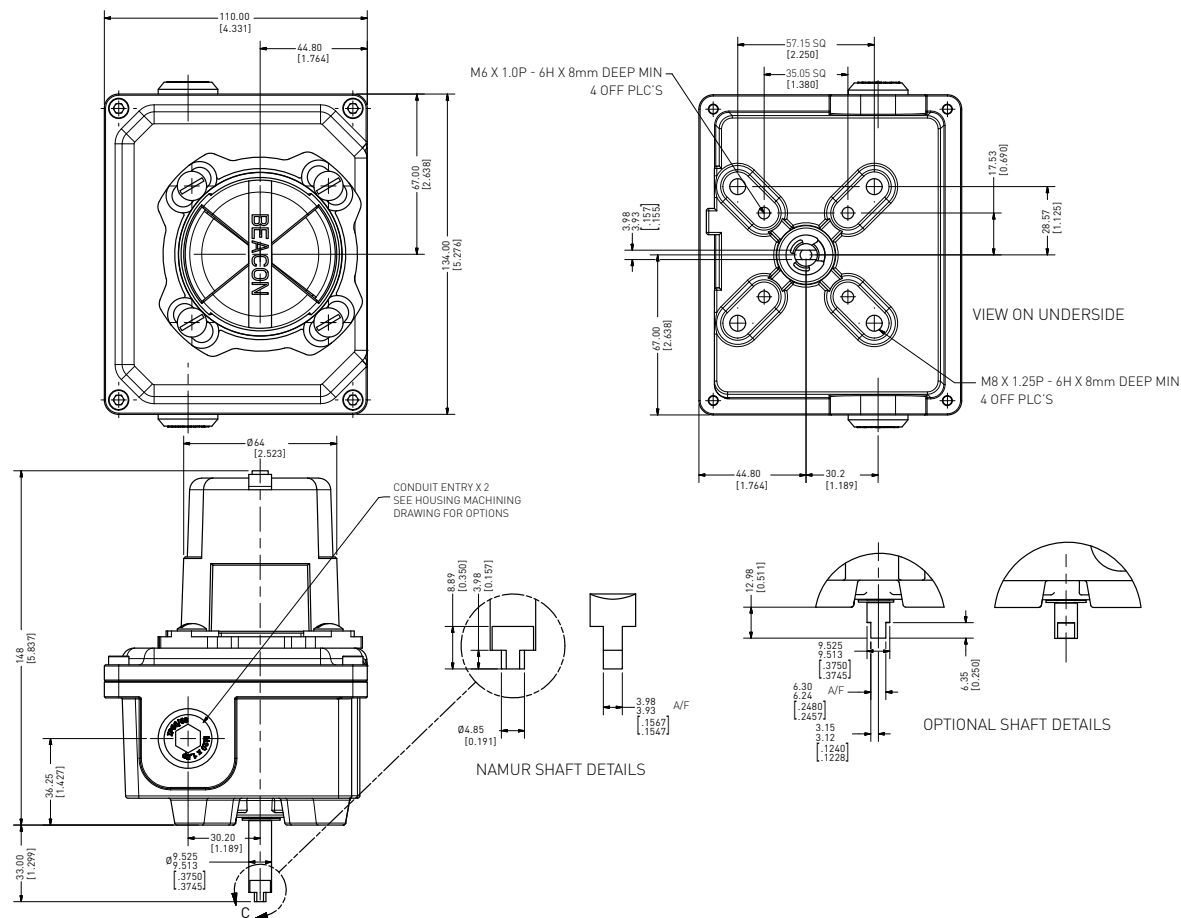
AccuTrak position monitors are available with a choice of conduit entries. Please see the selection guide for standard entries.

Switches and sensors

For further information see our switches and sensors data sheet.



3000 Series aluminium & stainless steel enclosure dimensions



Dimensions in mm, where available imperial dimension (inches) in parentheses

Technical specifications

Materials of construction

Enclosure	Aluminium with powder coat finish
	Stainless steel with electropolished finish
Shaft and hardware	Stainless steel
Bushing	Oil impregnated bronze (aluminium enclosure) PTFE (stainless steel enclosure)
Beacon visual indicator	Co-polyester

Drive shaft

Standard	Double-D with 1/4" A/F
Option	NAMUR standard VDI/VDE 3845

Available switches

	V3 SPDT mechanical switches, gold plated contacts
	V3 inductive NAMUR proximity sensors
	Magnum, SPDT (hermetically sealed proximity type) switches with rhodium contacts

Please consult your sales office for any other requirements

Notes

Conduit entries

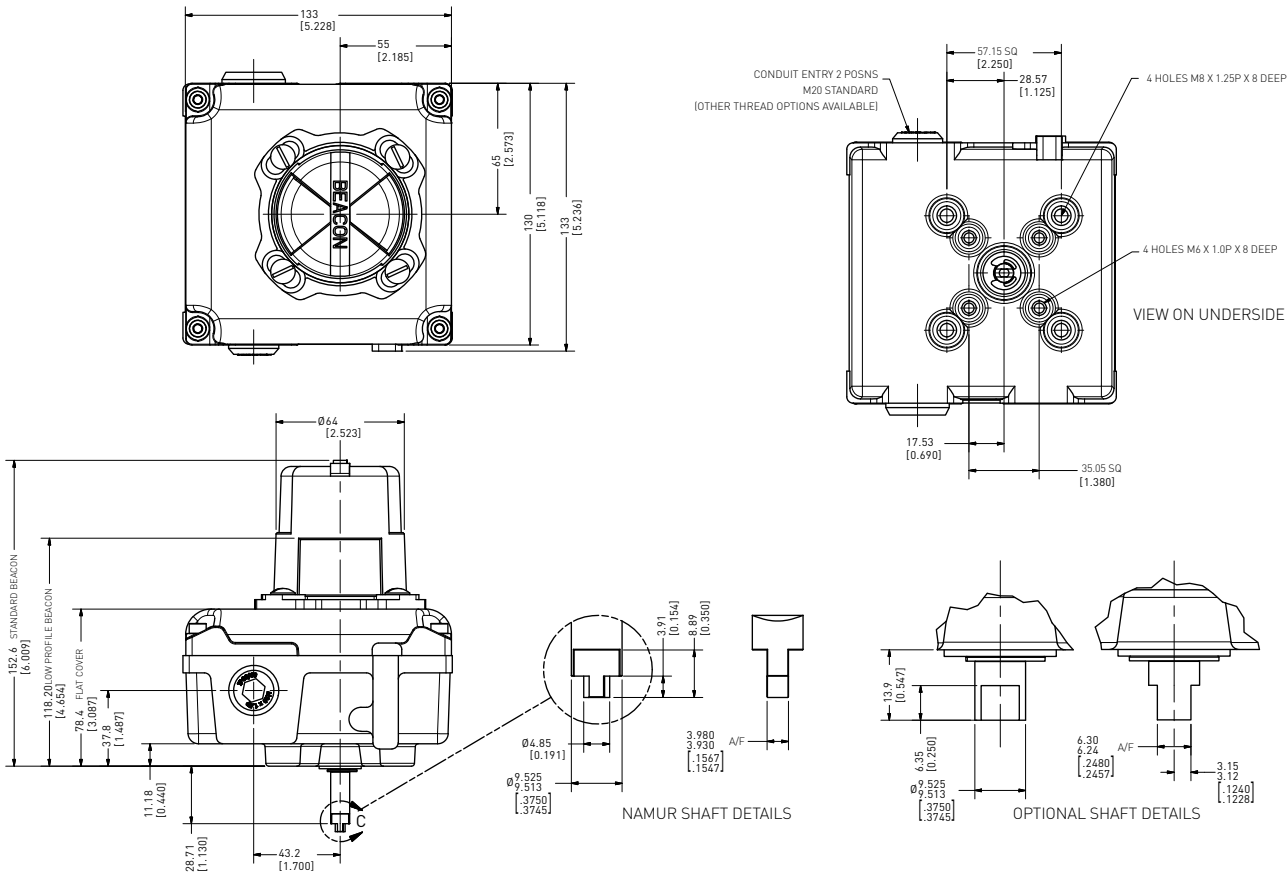
AccuTrak position monitors are available with a choice of conduit entries. Please see the selection guide for standard entries.

Switches and sensors

For further information see our switches and sensors data sheet.



3300 Series resin enclosure dimensions



Dimensions in mm, where available imperial dimension (inches) in parentheses

Technical specifications	
Materials of construction	
Enclosure	Engineered resin
Shaft and hardware	Stainless steel
Bushing	Nylon
Beacon visual indicator	Co-polyester
Drive shaft	
Standard	Double-D with ¼" A/F
Option	NAMUR standard VDI/VDE 3845
Available switches	
V3 SPDT mechanical switches, gold plated contacts	
V3 inductive NAMUR proximity sensors	
Magnum, SPDT (hermetically sealed proximity type) switches with rhodium contacts	

Please consult your sales office for any other requirements

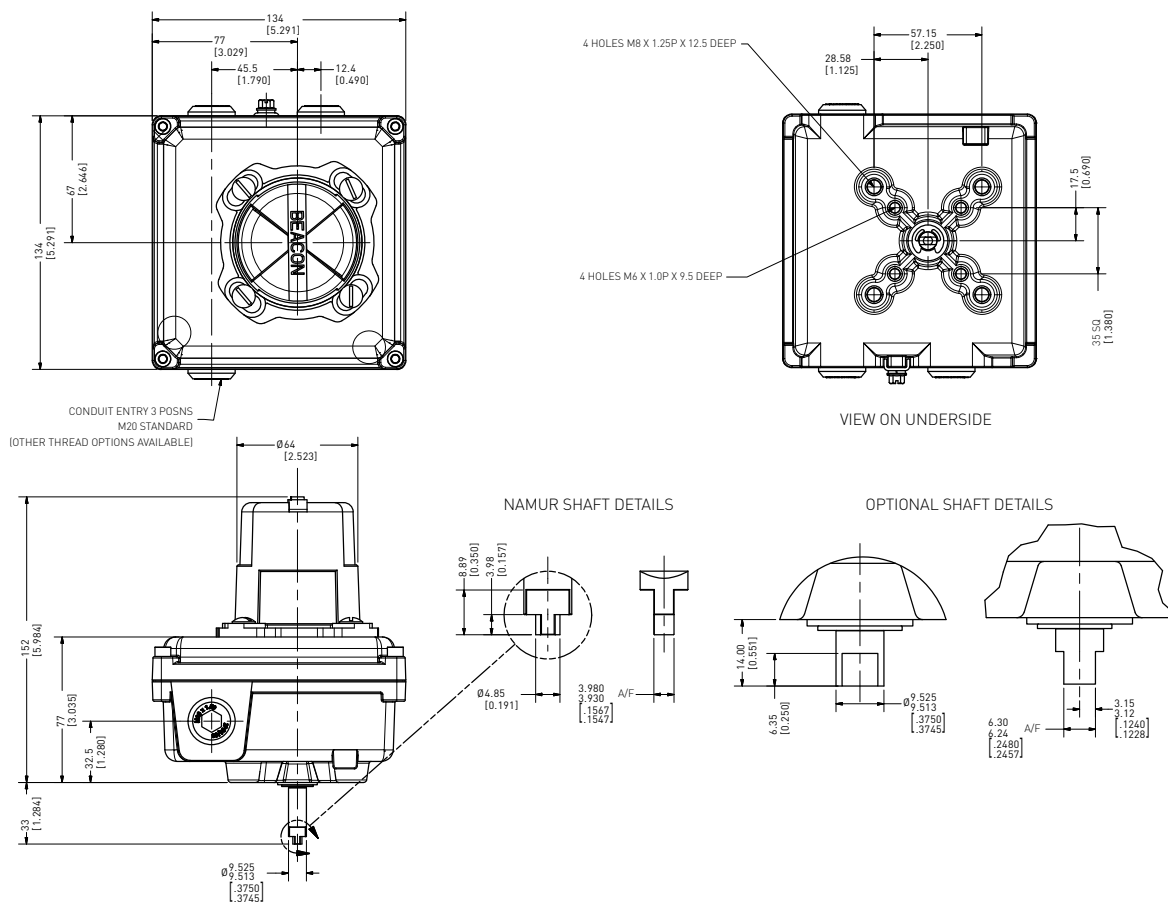
Notes

Conduit entries
 AccuTrak position monitors are available with a choice of conduit entries. Please see the selection guide for standard entries.

Switches and sensors
 For further information see our switches and sensors data sheet.



3300 Series aluminium & stainless steel enclosure dimensions



Dimensions in mm, where available imperial dimension (inches) in parentheses

Technical specifications

Materials of construction

Enclosure	Aluminium with powder coat finish Stainless steel with electropolished finish
Shaft and hardware	Stainless steel
Bushing	Oil impregnated bronze (aluminium enclosure) PTFE (stainless steel enclosure)
Beacon visual indicator	Co-polyester

Drive shaft

Standard	Double-D with 1/4" A/F
Option	NAMUR standard VDI/VDE 3845

Available switches

	V3 SPDT mechanical switches, gold plated contacts V3 inductive NAMUR proximity sensors Magnum, SPDT (hermetically sealed proximity type) switches with rhodium contacts
--	--

Please consult your sales office for any other requirements

Notes

Conduit entries

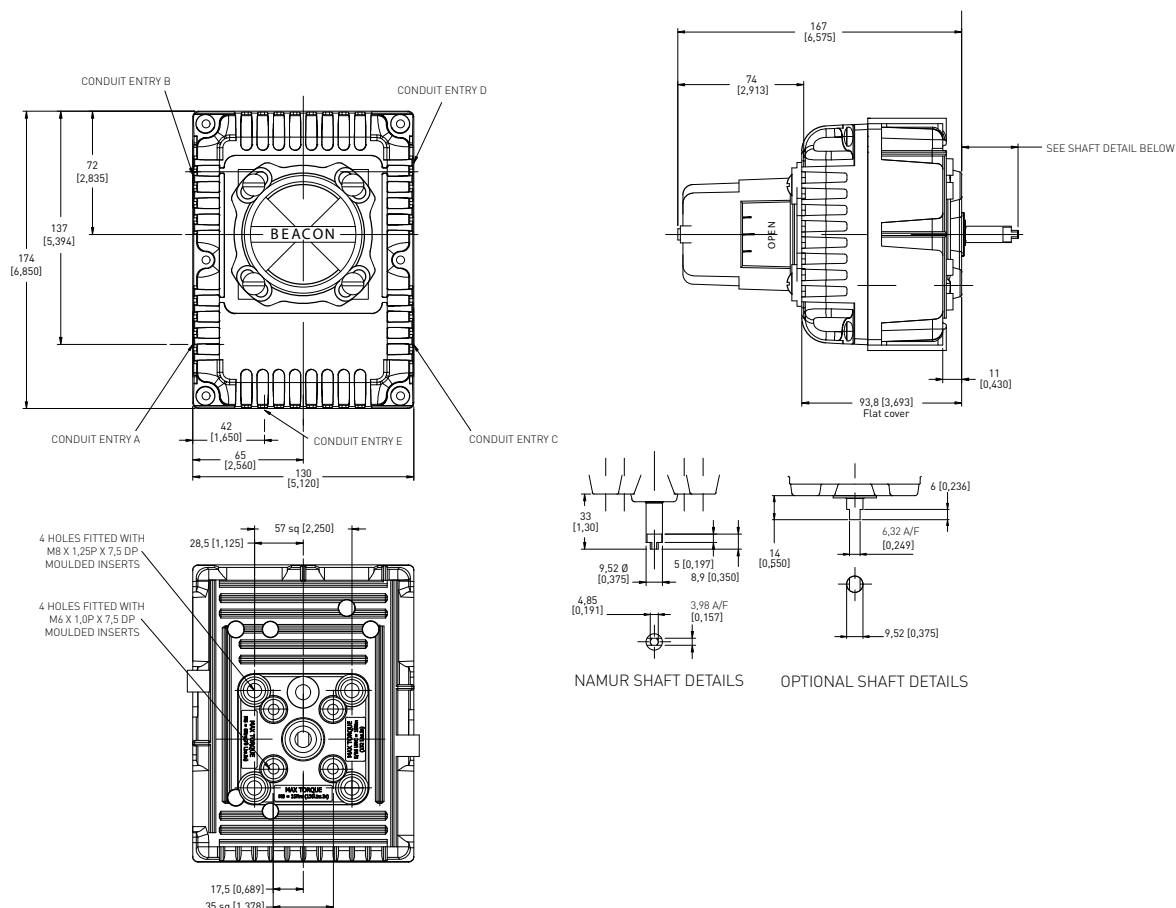
AccuTrak position monitors are available with a choice of conduit entries. Please see the selection guide for standard entries.

Switches and sensors

For further information see our switches and sensors data sheet.



8300 Series resin enclosure dimensions



Dimensions in mm, where available imperial dimension (inches) in parentheses

Technical specifications

Materials of construction

Enclosure	Engineered resin
Shaft and hardware	Stainless steel
Bushing	Nylon
Beacon visual indicator	Co-polyester

Drive shaft

Standard	Double-D with 1/4" A/F
Option	NAMUR standard VDI/VDE 3845

Available switches

V3 SPDT mechanical switches, gold plated contacts
V3 inductive NAMUR proximity sensors
Magnum, SPDT (hermetically sealed proximity type) switches with rhodium contacts

Please consult your sales office for any other requirements

Notes

Conduit entries

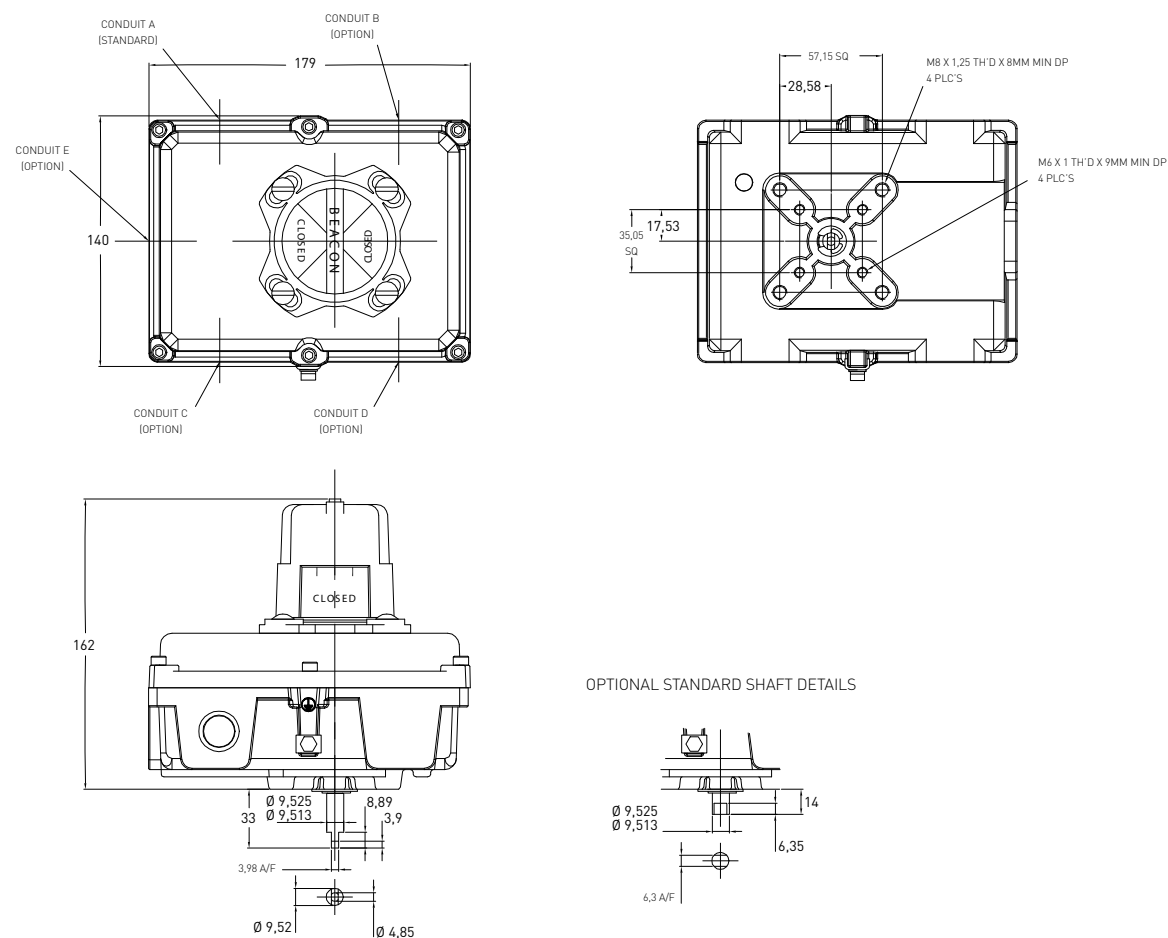
AccuTrak position monitors are available with a choice of conduit entries. Please see the selection guide for standard entries.

Switches and sensors

For further information see our switches and sensors data sheet.



8300 Series aluminium & stainless steel enclosure dimensions



Dimensions in mm, where available imperial dimension (inches) in parentheses

Technical specifications	
Materials of construction	
Enclosure	Aluminium with powder coat finish Stainless steel with electropolished finish
Shaft and hardware	Stainless steel
Bushing	Oil impregnated bronze (aluminium enclosure) PTFE (stainless steel enclosure)
Beacon visual indicator	Co-polyester
Drive shaft	
Standard	Double-D with ¼" A/F
Option	NAMUR standard VDI/VDE 3845
Available switches	
	V3 SPDT mechanical switches, gold plated contacts V3 inductive NAMUR proximity sensors Magnum, SPDT (hermetically sealed proximity type) switches with rhodium contacts

Please consult your sales office for any other requirements

Notes

Conduit entries
 AccuTrak position monitors are available with a choice of conduit entries. Please see the selection guide for standard entries.

Switches and sensors
 For further information see our switches and sensors data sheet.

AccuTrak™ Intrinsically Safe Rotary Position Monitors

Models 3000, 3300 and 8300 Selection Guide

Housing											
30	3000 with flanged lid										
33	3300 with flanged lid										
83	8300 with flanged lid										
Cover style											
4	With Beacon										
6	Flat cover										
Switch type											
5	Microswitch SPDT contacts										
7	Pepperl & Fuchs inductive NAMUR sensor										
8	Other inductive NAMUR sensor										
9	Magnum XT90 (rhodium contact SPDT switch)										
0	No switches fitted										
Material											
A	Aluminium										
R	Engineered resin										
S	Stainless steel										
Beacon type and colour											
BY	Black/Yellow					B1	BM3-1 pattern 90°				
LY	Black/Yellow low profile					B3	BM3-3 pattern 90°				
AR	ANSI Red/White					B5	BM3-5 pattern 90°				
GR	Green/Red					B7	BM3-7 pattern 180°				
00	No Beacon fitted					B9	BM3-9 pattern 180°				
Drive shaft type											
S	Westlock standard – ¼" A/F (6.32 mm)										
N	NAMUR standard shaft – VDI/VDE 3845										
*	Non-standard material and build (consult sales office)										
Ancillary options											
000	No ancillary options										
***	Non-standard material and build (consult sales office)										
Switch/sensor quantity											
0	No switch/sensor fitted										
1	One switch/sensor										
2	Two switches/sensors										
3	Three switches/sensors (consult sales office for 3300/8300 series only)										
4	Four switches/sensors (consult sales office for 3300/8300 series only)										
Conduit entries supplied											
2	Two entries – All enclosures										
3	Three entries (consult sales office for 3000/3300 series)										
4	Four entries (8300 series only)										
5	Five entries (consult sales office for 8300 series only)										
Unit specification											
AAA	Standard build- M20 conduit entries										
ADZ	¾" NPT conduit entries										
DAV	M25 conduit entries										
FAN	½" NPT conduit entries										
***	Non-standard material (consult sales office)										
Certification											
A	ATEX										
I	IECEX										
*	Other options (consult sales office)										
Revision											
R*	Internal revision #										

30
4
5
R
BY
N
000
2
2
AAA
A
R1
= Model number **3045RBYN00022AAA-AR1**

Notes

Specifying your position monitor

Specifying a position monitor is a complex process as there are many variables which affect each individual application. To ensure that you receive the best possible combination for your monitoring requirement, please contact your local sales office for advice and guidance from one of our experts.

Hazardous area classification

Please see our data sheet for further information on the global standards affecting the specification and installation of equipment in hazardous areas..