

Product Data Sheet

Gauge Block Monoflange Valve

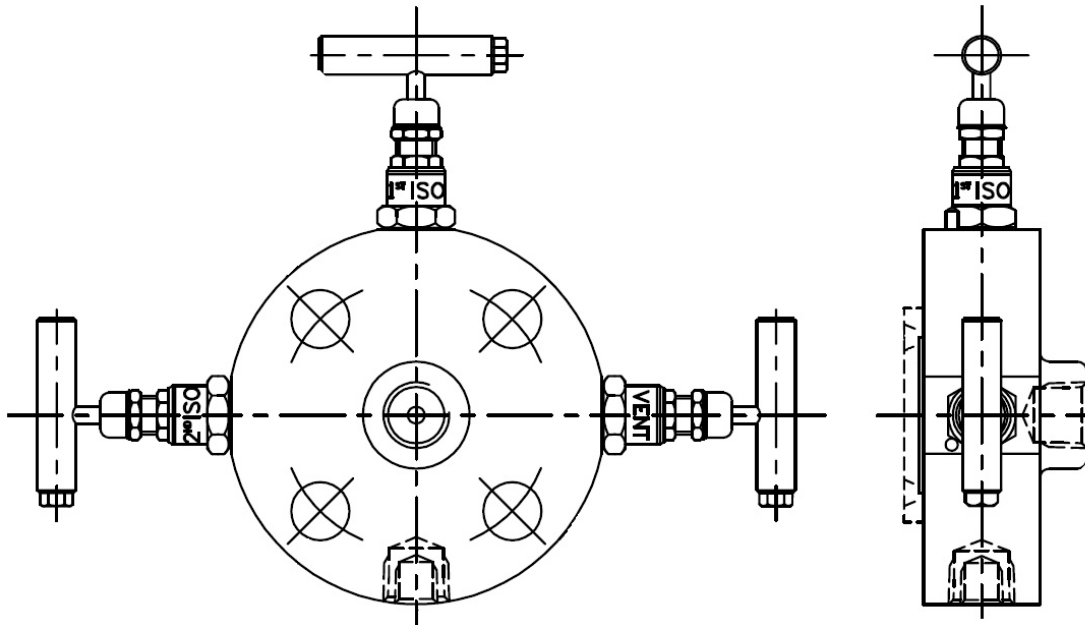


Gauge block monoflange valves work in conjunction with a pre-installed primary isolate valve. They provide compact instrument double block and bleed valving. This range is also available in both single block and single block and bleed configurations.

Key Features of the Oliver Gauge Block Monoflange Valve

- Double Block and Bleed valves
- Block and Bleed valves
- Single Block Valve
- Primary isolate – Needle pattern
- Secondary isolate – Needle pattern
- Bleed valve – Needle pattern
- Horizontal and vertical instrument connections
- Valves designed to connect with ANSI B16.5 flanges

General Arrangement Drawing



Ordering Code

(Typical example) →	Mono	/	BK	/	S	/	50F-150RF	/	50F/25F	/	HL/NA
Model / Type											
Mono – mono flange											
Model											
BK - block											
BB – block and bleed											
DBB – double block and bleed											
Material Selection											
C – Carbon steel ASTM A320 LF2											
S – Stainless steel ASTM A182 F316											
Other materials available by request											
Flange details											
Flange size											
50 - ½"											
75 - ¾"											
10 - 1"											
150 - 1½"											
200 - 2"											
300 - 3"											
Flange class											
150 – 150lb											
300 – 300lb											
600 – 600lb											
900 – 900lb											
1500 – 1500lb											
2500 – 2500lb											
Flange type											
RTJ – Ring type joint											
RF – Spiral finish raised face											
Instrument / Vent											
Connection size											
25 - ¼" (std vent)											
38 - ¾"											
50 - ½" (std process/instrument)											
Instrument connection (NPT standard)											
BP – BSP parallel pipe thread BS2779-1986											
BT – BSP taper pipe thread BS21 - 1985											
CE – Compression fitting											
LJTA – Lap Joint Tube Adaptor											
GA – Swivel Gauge Adaptor											
Options											
ATV – Anti-tamper on vent											
FS – Firesafe to API 607											
HL – Handle locking											
NA – NACE MR-01-75 (latest revision)											