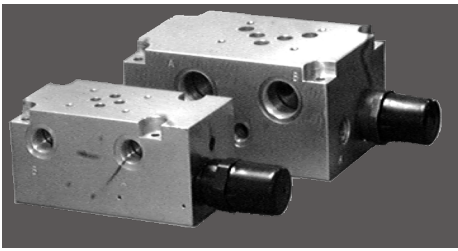


DP6

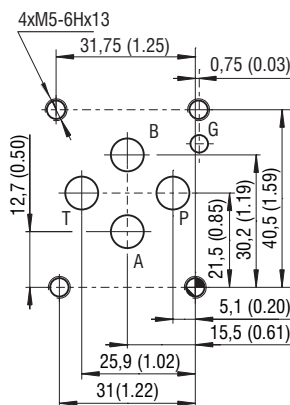
Size 06, 10 (D03, D05) • Q_{\max} 50, 120 l/min (13, 32 GPM) • p_{\max} 350 bar (5100 PSI)



Technical Features

- › Base manifolds used for hydraulic systems or power units which require only one directional valve assembly
- › Designed for two sizes of flange mounted valves with mounting interface acc. to ISO 4401-03 (CETOP 03) or ISO 4401-05 (CETOP 05)
- › Integrated direct operated pressure relief valve up to 120 l/min (32 GPM)
- › Suitable for horizontal mounting on the tank cover of the pump drive unit, or for vertical arrangement with the pump situated in the tank under the oil level
- › Wide pressure range up to 320 bar for both sizes of pressure relief valves
- › In the standard version, the plate is zinc-coated for 240 h protection acc. to ISO 9227 and the pressure valve is black-oxide coated

ISO 4401-03-02-0-05 (CETOP 03)

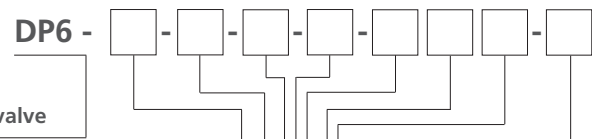


Ports P, A, B, T - max \varnothing 7.5 mm (0.29 in)

Technical Data

Valve size			06 (D03)	10 (D05)
Max. operating pressure (steel)		bar (PSI)	350 (5080)	
Max. flow rate		l/min (GPM)	50 (13)	120 (32)
Weight with valve	DP6-06*	kg (lbs)	4.1 (9.0)	
	DP6-10*		7.7 (17.0)	

	Datasheet	Type
General information	GI_0060	Products and operating conditions
Mounting interface / tolerances	SMT_0019	Size 06, 10 / CETOP 03, 05
Spare parts	SP_8010	

Ordering Code

**Base manifold
for ISO 4401 modular valve**

Size, mounting interface acc. to:
 ISO 4401-03-02-0-05, DIN 24340 (CETOP 03) **06**
 ISO 4401-05-04-0-05, DIN 24340 (CETOP 05) **10**

Pressure relief valve cavity

M28 x 1.5 / QP2	QP2
M35 x 1.5 / QT2	QT2

Port size

P, T, A, B ... G 3/8,	M ... G 1/4*	G1
P, T, A, B ... G 3/4,	M ... G 1/4**	G2
P, T, A, B ... SAE-6,	M ... SAE-4*	S1

*Only for size 06
 **Only for size 10

Pressure relief mode

without pressure relief valve	No designation
VPP1-06, 10	VPP1
VPP2-06	VPP2

Adjustment option

allen key (hex. 6) with protective cap
hand knob, plastic

Surface treatment

No designation
plate zinc-coated (ZnCr-3),
ISO 9227 (240h),
the pressure valve
is black-oxide coated

Seals

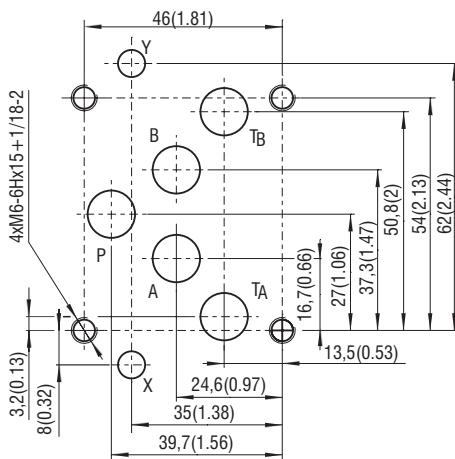
N	NBR
No designation	without seal rings

Pressure range

2.5	up to 25 bar (360 PSI)
6.3	up to 63 bar (910 PSI)
10	up to 100 bar (1450 PSI)
16	up to 160 bar (2320 PSI)
25	up to 250 bar (3630 PSI)
32	up to 320 bar (4640 PSI)

DP6-10-*-VPP1T*

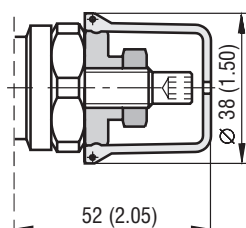
ISO 4401-05-04-0-05 (CETOP 05)



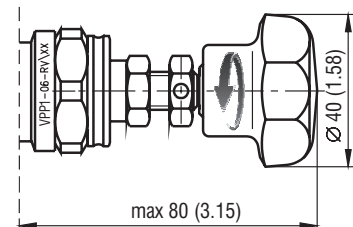
Ports P, A, B, T - max \varnothing 11.2 mm (0.44 in)

Adjustment Options dimensions in millimeters (inches)

DP6-06-*-VPP1T*
Model T

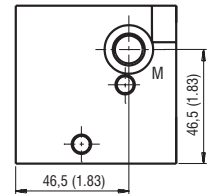
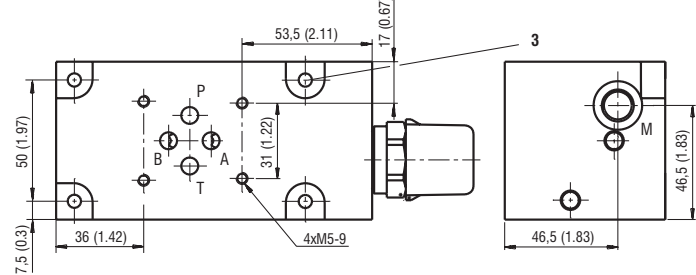
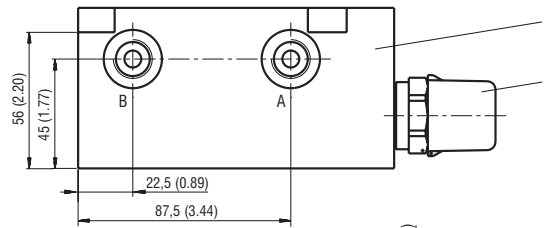
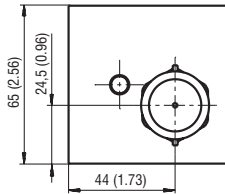
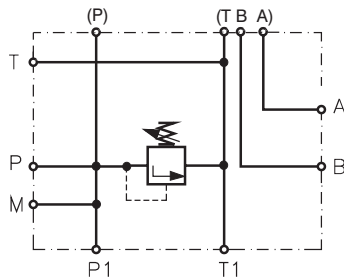


DP6-06-*-VPP1RP*
Model RP

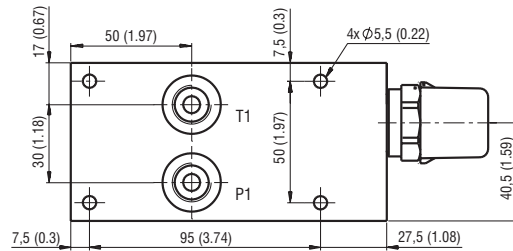
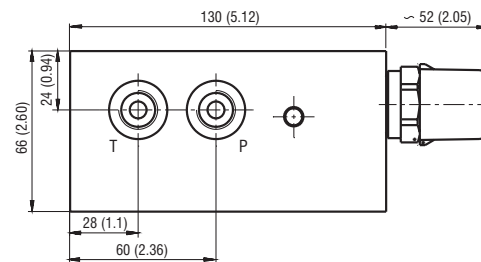


Dimensions in millimeters (inches)

DP6-06-*-VPP1T*

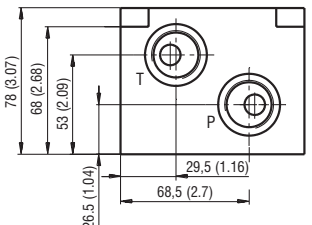
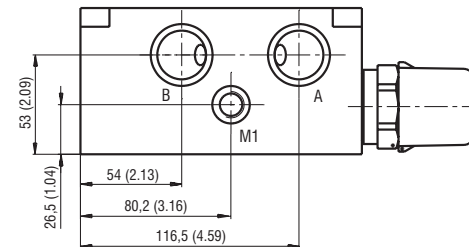
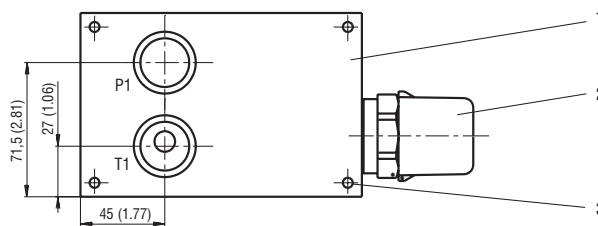
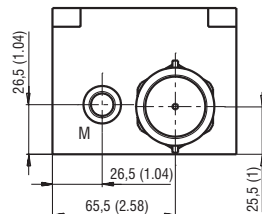
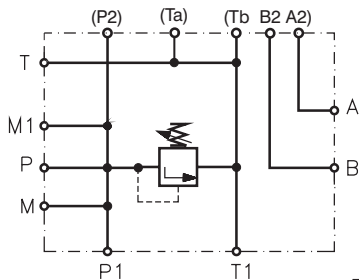


Port	Thread	Counterbore	Counterbore depth
A	G 3/8, SAE-6	Ø 24 (0.94)	1 (0.04)
B	G 3/8, SAE-6	Ø 24 (0.94)	1 (0.04)
P	G 3/8, SAE-6	Ø 24 (0.94)	1 (0.04)
T	G 3/8, SAE-6	Ø 24 (0.94)	1 (0.04)
P1	G 3/8, SAE-6	Ø 28 (1.1)	5.5 (0.22)
T1	G 3/8, SAE-6	Ø 28 (1.1)	5.5 (0.22)
M	G 1/4, SAE-4	Ø 20 (0.79)	1 (0.04)

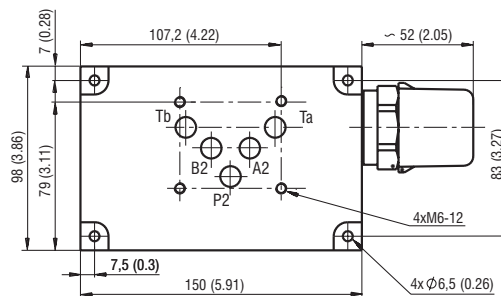


- 1 Base block
- 2 Pressure relief valve
- 3 4 mounting holes

DP6-10-*-VPP1T*



Port	Thread	Counterbore	Counterbore depth
A	G 3/4	Ø 33 (1.3)	1 (0.04)
B	G 3/4	Ø 33 (1.3)	1 (0.04)
P	G 3/4	Ø 33 (1.3)	1 (0.04)
T	G 3/4	Ø 33 (1.3)	1 (0.04)
P1	G 3/4	Ø 38 (1.5)	5.5 (0.22)
T1	G 3/4	Ø 38 (1.5)	5.5 (0.22)
M	G 1/4	Ø 20 (0.79)	1 (0.04)
M1	G 1/4	Ø 20 (0.79)	1 (0.04)



- 1 Base block
- 2 Pressure relief valve
- 3 4 mounting holes

