

# Multi-Axis Controller V11



The Multi-Axis Controller V11 is a robust switching device for crane and hoisting applications. The modular design enables the switching device to be used universally.

### Technical data

Mechanical life V11	10 million operating cycles
Operation temperature	-40°C to +85°C
Degree of protection	Up to IP54 front



	V11L	S5	P	T	-01 Z P	+03A R	-A05 P324	+A110	-X
<i>Example</i>									
<b>Basic unit</b>									
V11L Multi-Axis Controller 2-axis left									
<b>Control-handle extended</b>									
S5 -20 mm									
<b>Gate</b>									
P Cross gate									
<b>Grip / Palm Grip</b>									
T Dead man									
<b>Axis 1 (direction 1-2)</b>									
01 2 contacts (2A 250 V AC15)									
Z Spring return									
P Potentiometer									
<b>Axis 2 (direction 3-4)</b>									
03A 6 contacts (4A 250 V AC15)									
R Friction brake									
<b>Description axis 1 (direction 1-2)</b>									
A05 Arrangement MS21									
P324 Potentiometer T365 2 x 5 kOhm									
<b>Description axis 2 (direction 3-4)</b>									
A110 Arrangement MS24-0									
<b>Special model</b>									
X Special / customer specified									

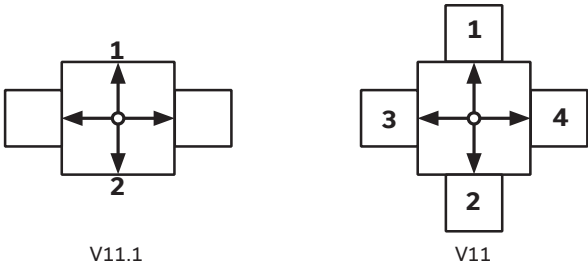
Technical details may vary based on configuration or application! Technical data subject to change without notice!

Combination possibilities with our grips



		V11L	S5	P	T	-	01 Z P	+	03A R P	-	A05 P324	+	A110 P325	-	X
<b>Basic unit</b>		V11L	2-axis left												
V11R		2-axis right													
V11.1L		1-axis left													
V11.1R		1-axis right													
<b>Control-handle extended</b>			Standard 120 mm*												
S5		-20 mm													
S8		+20 mm													
*Only available in combination with a handle!															
<b>Gate</b>		P	Cross gate												
P X		Special gate													
<b>Grip / Palm Grip</b>			Knob (included in basic unit!)												
M		Mechanical zero interlock													
MN		Mechanical zero interlock (push down)													
T		Dead man													
H		Signal button													
D		Push button													
DV		Flush push button													
B...		Palm Grip B... (see page Palm Grip 161)													

Identification of the installation variants  
with switching directions:



V11L S5 P T - 01 Z P + 03A R P - A05 P324 + A110 P325 - X

Axis 1: direction 1-2 left / direction 5-6 right				
(Standard contacts gold-plated 2A 250 V AC15)				
01	<input type="checkbox"/>	2 contacts	Standard contact - arrangement see page 127	
02	<input type="checkbox"/>	4 contacts	e.g.	
03	<input type="checkbox"/>	6 contacts	A980	MS00
			A05	MS21
			A0500	MS21-00
			A110	MS24-0
			(Max. 4 steps per switching direction possible!)	
	<input checked="" type="checkbox"/> = Silver contacts (4A 250 V AC15)		A99 contact - arrangement according customer request	
Z	Spring return			
R	Friction brake			
(P)	Possibility of mounting potentiometer and encoder (Gessmann-types)			
P	Potentiometer	P324	T365 2 x 5 kOhm	I max. 1 mA
		P325	T365 2 x 10 kOhm	I max. 1 mA
		More potentiometers on request!		
C	Encoder	C... Encoder see page 135		

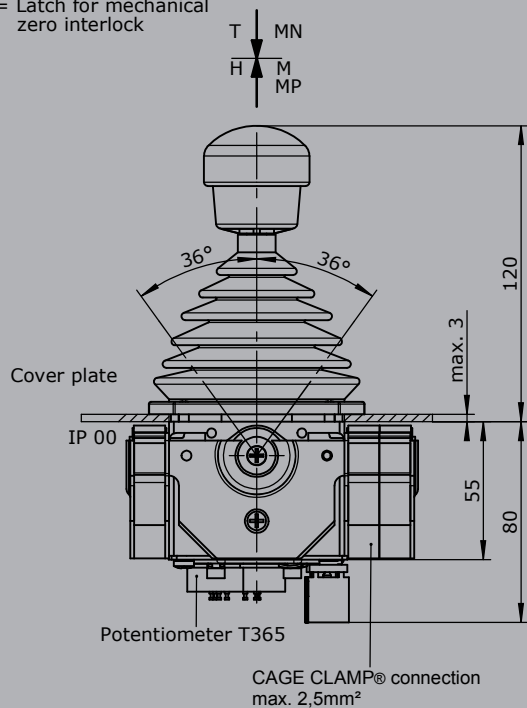
V11L S5 P T - 01 Z P + 03A R P - A05 P324 + A110 P325 - X

Axis 2: direction 3-4 left / direction 7-8 right			(not applied for V11.1)	
(Standard contacts gold-plated 2A 250 V AC15)				
01	<input type="checkbox"/>	2 contacts (2A 250V AC15)	Standard contact - arrangement see page 127	
02	<input type="checkbox"/>	4 contacts (2A 250V AC15)	z.B.	
03	<input type="checkbox"/>	6 contacts (2A 250V AC15)	A980	MS00
			A05	MS21
			A0500	MS21-00
			A110	MS24-0
			(Max. 4 steps per switching direction possible!)	
	<input checked="" type="checkbox"/>	Silver contacts (4A 250 V AC15)	A99 contact - arrangement according customer request	
Z	Spring return			
R	Friction brake			
(P)	Possibility of mounting potentiometer and encoder (Gessmann-types)			
P	Potentiometer	P324	T365 2 x 5 kOhm	I max. 1 mA
		P325	T365 2 x 10 kOhm	I max. 1 mA
		More potentiometers on request!		
C	Encoder	C... Encoder see page 135		

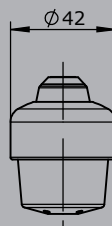
V11L S5 P T - 01 Z P + 03A R P - A05 P324 + A110 P325 - X

Special model	
X	Special / customer specified
Attachments	
	Indicating labels
	Indicating labels with engraving

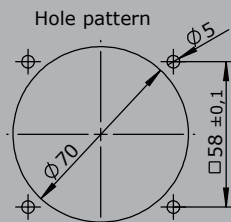
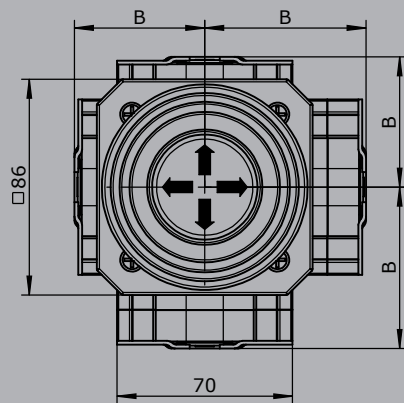
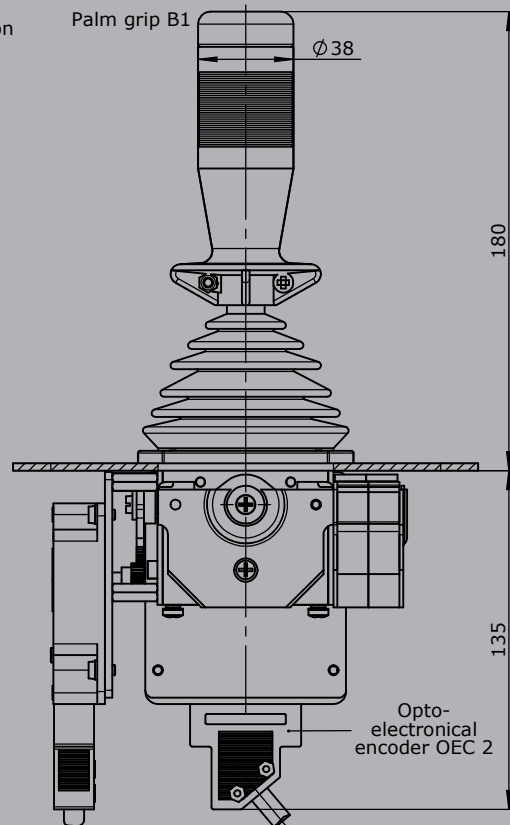
T = Dead man's button  
H = Signalbutton  
M = Latch for mechanical  
zero interlock



Knob solid  
D= Push button



Palm grip B1



Type	No. of contacts	Dim. B
01	2	51
02	4	64
03	6	76