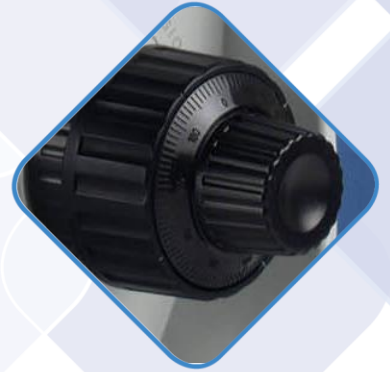


## MB 5 Series Microscope





## MB 5 Series Microscope

MB-5 Biological Microscope is an ergonomic and reliable device with a modern design. Easy to use and good image quality makes it an excellent choice for studio teaching. New, bright adjustable LED lights 3W provides a large amount of light for observation.

### Technical parameters\*

<b>Viewing head</b>	Binocular od trinocular. Adjustable interpapillary distance: 50-75mm, Eyepiece inclination: 30°, Dioptic correction: $\pm 5$ dioptic.
<b>Eyepieces</b>	Wide field of view PL10X/18mm (optionally with an indicator or mesh).
<b>Objectives</b>	Achromatic 4X/N.A.0.1; 10X/N.A.0.25; 40X/N.A.0.65; 100XS/N.A.1.25, (optional) Planachromatic 4X/N.A.0.1; 10X/N.A.0.25; 20X/N.A.0.40; 40X/N.A.0.65; 100XS/N.A.1.25.
<b>Condenser</b>	N.A. 1.25 Abbego with iris diaphragm.
<b>Focus adjustment</b>	Coaxial knobs with macro and micro Focus. Movement precision: 0,002 mm.
<b>Stage</b>	Double layers mechanical stage with convenient vertical XY manipulators. Dimensions: 132x140 mm. Movement range: 50mm x 76mm. Movement precision 0.1mm.
<b>Illumination</b>	3W LED – adjustable brightness; centered factory.
<b>Base</b>	Ergonomic, openwork housing adapter to work in a teaching workshop.
<b>Power</b>	External power supply (standard) Built-in (optional) External power adapter and built-in battery (optional)
<b>Additional accessories</b>	Microscope camera with analysis software

\* Due to constant technological progress, the parameters provided above are purely informational in nature, depict an example configuration and are liable to change.