



---

# Customer information packet

## BSM90N-175AF

BSM90N-175AF

## Specifications

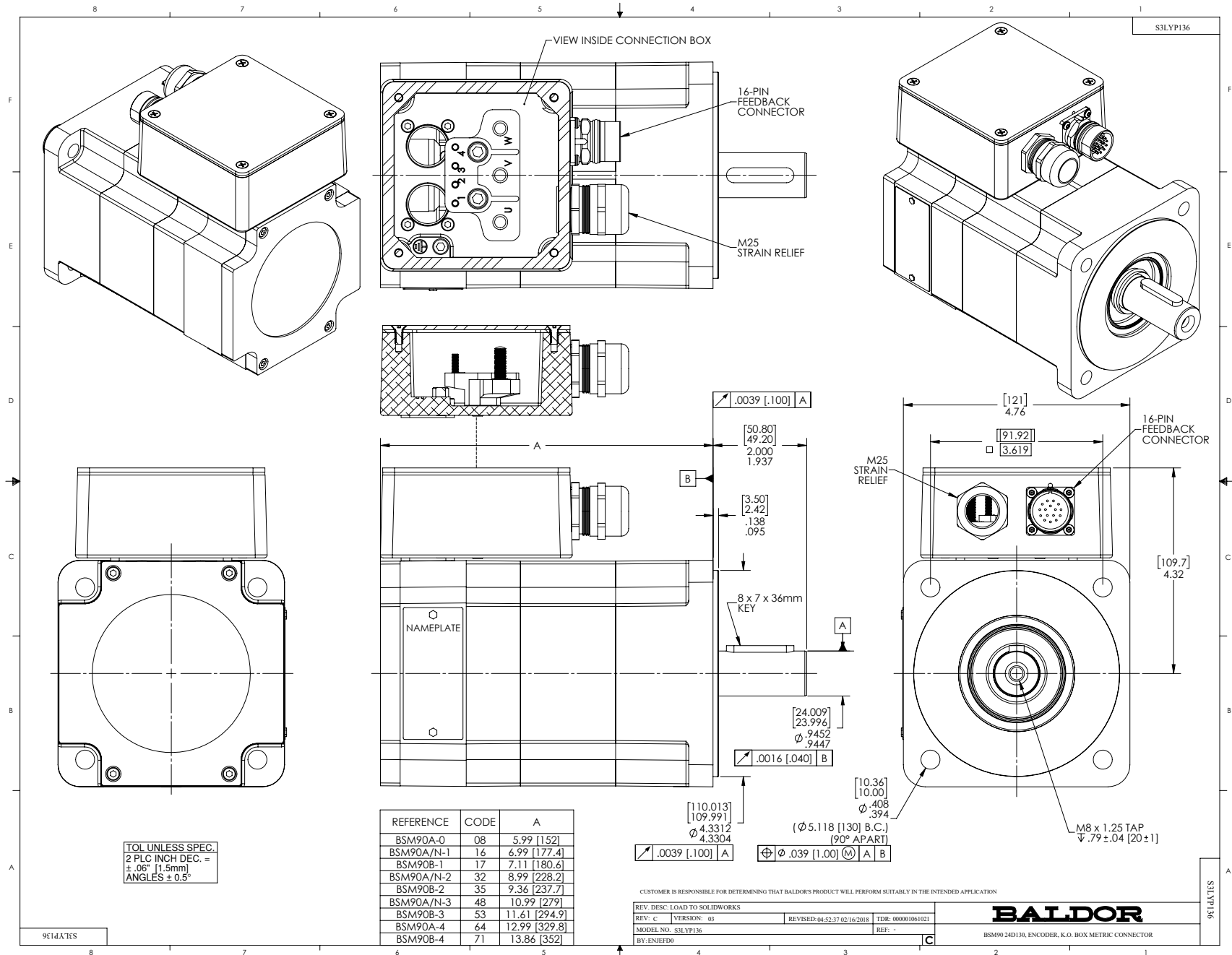
Enclosure	TENV
Nameplate Speed	4000
Agency Approvals	CE
	CSA
	TUV
	UR
Base Indicator	Bracket Mounted
Dimensional Drawing Numbers	S3LYP136
Frame	D130D
Motor Lead Quantity/Wire Size	3 @ 16 AWG
Motor Standards	IEC
Mounting Arrangement	F1
Nameplate Output	1.61KW
Shaft Rotation	Reversible

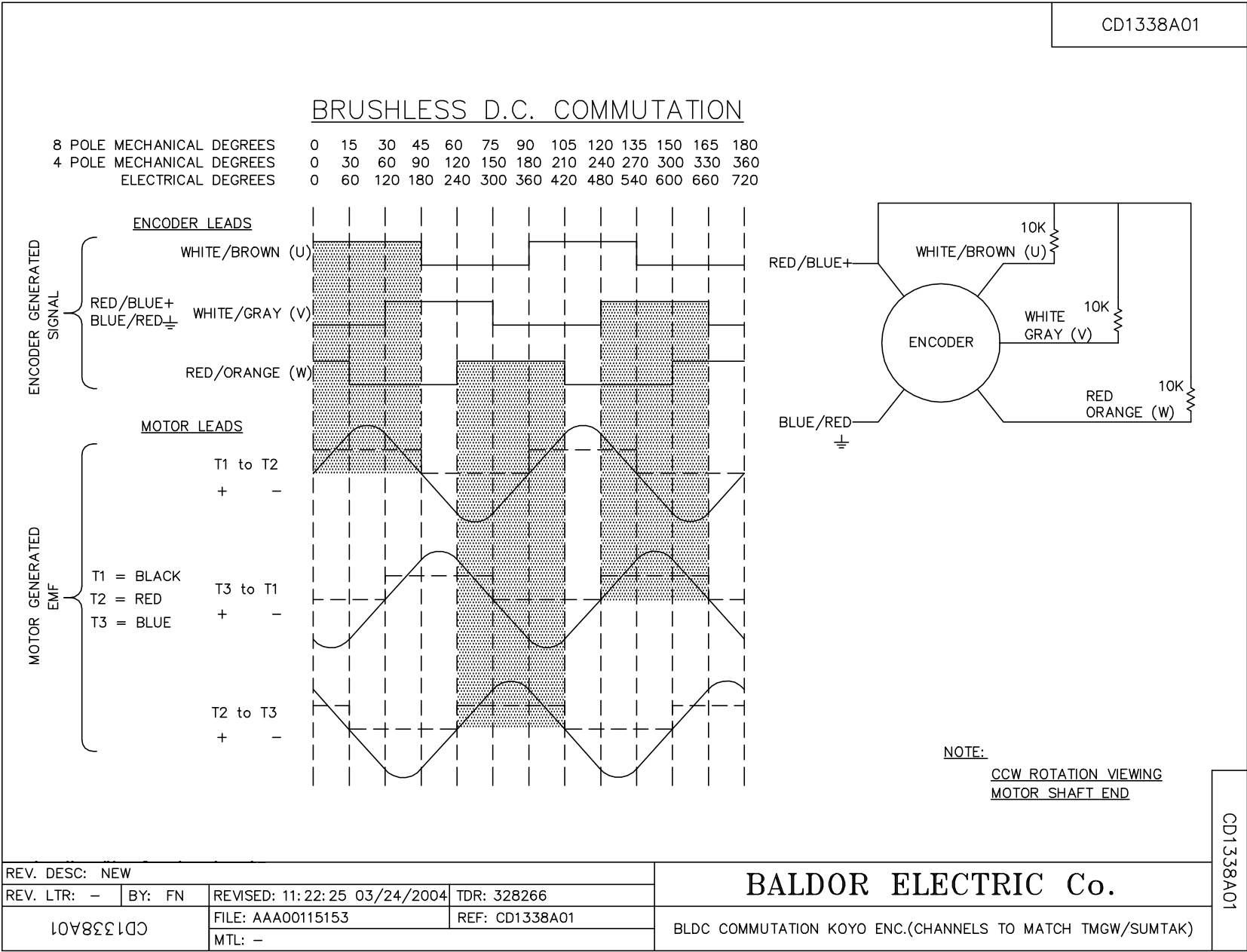
## Part detail

Revision	AJ
Type	AC
Mech. spec.	S3P136
Base	
Status	PRD/A
Elec. spec.	S3WGW057
Layout	S3LYP136
Eff. date	02-12-2024
CD Diagram	CD0006A02
Poles	08
Leads	3#16
Proprietary	False
Created date	01-01-0001

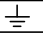
## Nameplate

NP2863L					
CAT.NO.	BSM90N-175AF				
SPEC.	S3P136W057G1				
MFG.NO.					
TORQ CONT STALL	6 NM				
CUR CONT STALL/A RMS	7.81				
POWER	1.61KW				
RATED SPEED/RPM(1/MIN)	4000				
RATED BUS VOLTS	300				
PEAK CUR/A RMS	31.2				
MAX SPEED/RPM(1/MIN)	4000				
IP	54	IC	410	WT.	10.4
CLASS	F	25C RATED			



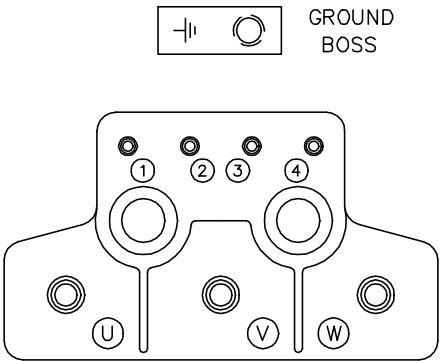


MOTOR CONNECTIONS

TERMINAL LABEL	FUNCTION	INTERNAL WIRE MARKING
1	THERMAL SWITCH	YELLOW
2	THERMAL SWITCH	YELLOW
3	*BRAKE	BLACK
4	*BRAKE	BLACK
	GROUND	-----
U	PHASE U	BLACK OR T1
V	PHASE V	RED OR T2
W	PHASE W	BLUE OR T3

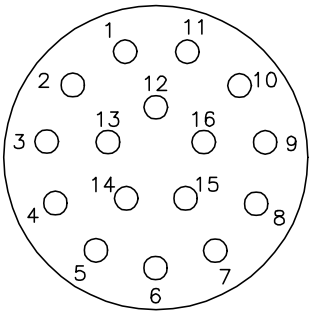
\* WHEN REQUIRED

PIN	FUNCTION	WIRE COLOR
1	DC+5V	RED/BLUE
2	GROUND	BLUE/RED
3	CHANNEL A	BLUE
4	CHANNEL $\bar{A}$	ORANGE
5	CHANNEL B	GREEN
6	CHANNEL $\bar{B}$	BROWN
7	CHANNEL Z	BLACK
8	CHANNEL $\bar{Z}$	YELLOW
9	OPEN	---
10	CHANNEL U	WHITE/BROWN
11	CHANNEL $\bar{U}$	BROWN/WHITE
12	CHANNEL V	WHITE/GRAY
13	CHANNEL $\bar{V}$	GRAY/WHITE
14	CHANNEL W	RED/ORANGE
15	CHANNEL $\bar{W}$	ORANGE/RED
16	OPEN	---



GROUND  
BOSS

CD1388A02



16 PIN CONNECTOR  
THREADED CRIMP PIN STYLE  
16- #20 CONTACT SIZE  
(CRIMP SIDE)

REV. DESC: NEW	REV. LTR: -	BY: FN	REVISED: 10: 20:15 03/25/2004	TDR: 328341
CD1388A02	20V88C1C0	FILE: AAA00115200	REF: CD1388A02	MTL: -

BALDOR ELECTRIC Co.

CONN DIAG KOYO ENCODER C/T, K.O. BOX & 16 PIN CONNECTOR

CD1388A02

