

## R11 Mechanical Drawings

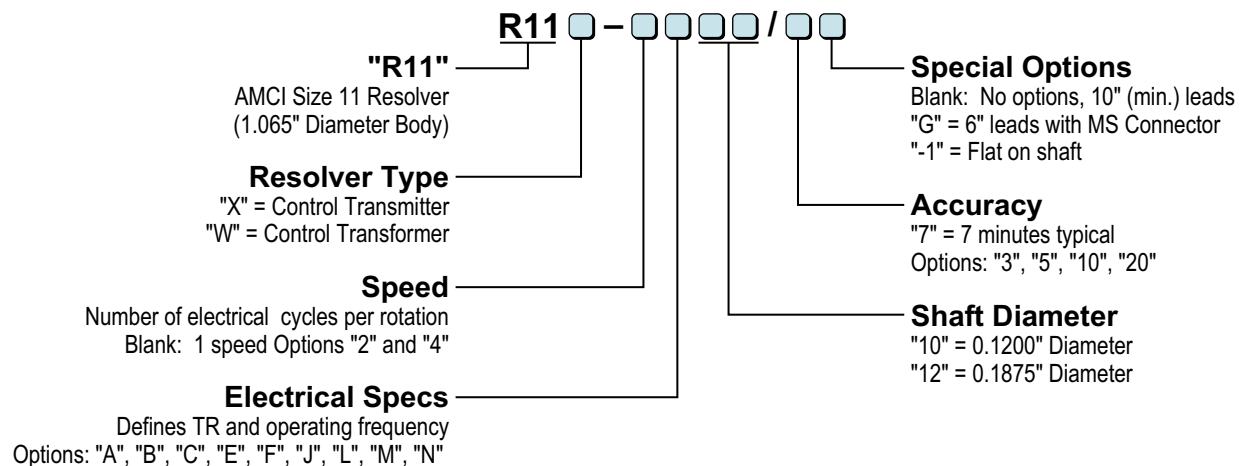
SHEET # 940-2T710

### DESCRIPTION

This document contains the mechanical drawings for all R11 resolvers currently manufactured by AMCI. It was last modified October 25, 2006. This sheet is reviewed whenever a new R11 resolver is designed and it is updated when necessary.

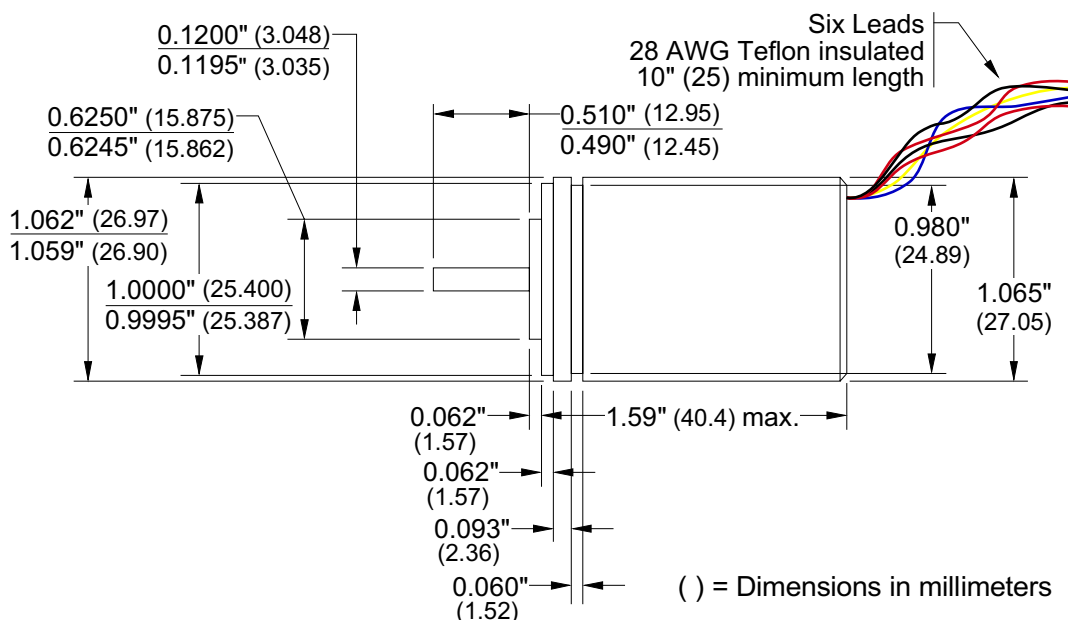
A breakout of AMCI's R11 part number system is given below. If your resolver's part number can be found in the part number system, then the dimensions given in this sheet are valid for your resolver. If you have any questions or concerns, feel free to contact AMCI.

### R11 PART NUMBERING SYSTEM



### DIMENSIONAL DRAWING:

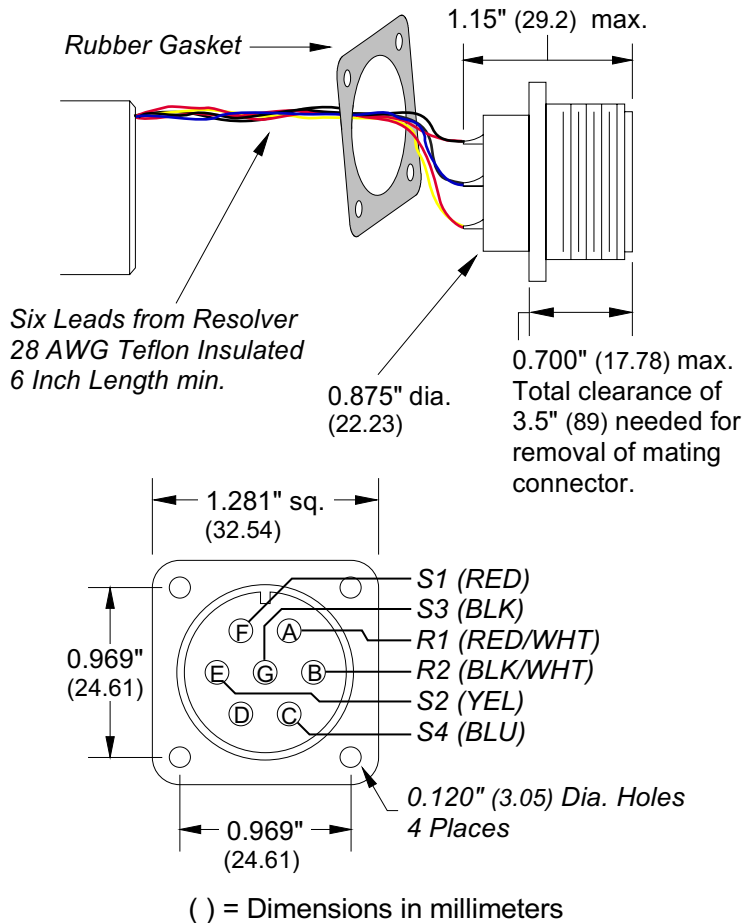
**Standard 0.1200" shaft (10), no MS-16 Connector.**



# R11 Mechanical Drawings

## OPTIONAL CONNECTOR:

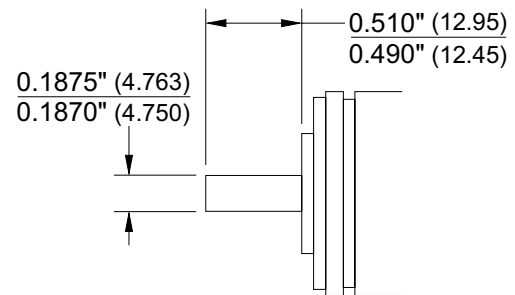
**MS Connector with 6" Leads  
(Special Option "G")**



Military equivalent part number of the MS connector is MS3102E16S-1P. It is the standard connector used by AMCI in our single turn HT and H25 lines of resolver transducers. A mating connector (Military equivalent # MS3106A16S-1S) can be ordered from AMCI using our part number MS-16.

## ALTERNATE SHAFT:

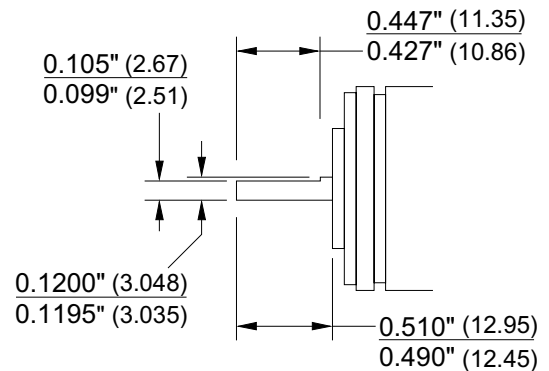
**0.1875" shaft  
(Shaft Diameter "12")**



( ) = Dimensions in millimeters

## ALTERNATE SHAFT DETAIL:

**Flat on 0.1200" shaft  
(Special Option: "-1")**



( ) = Dimensions in millimeters