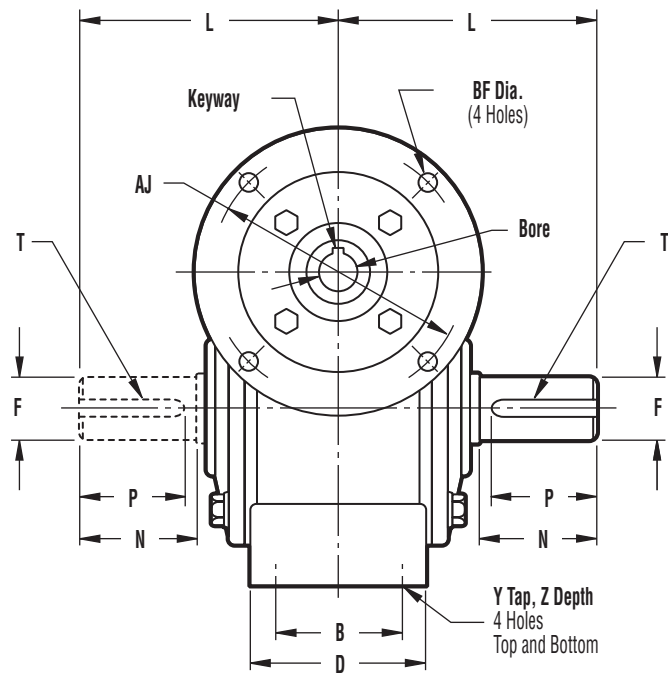
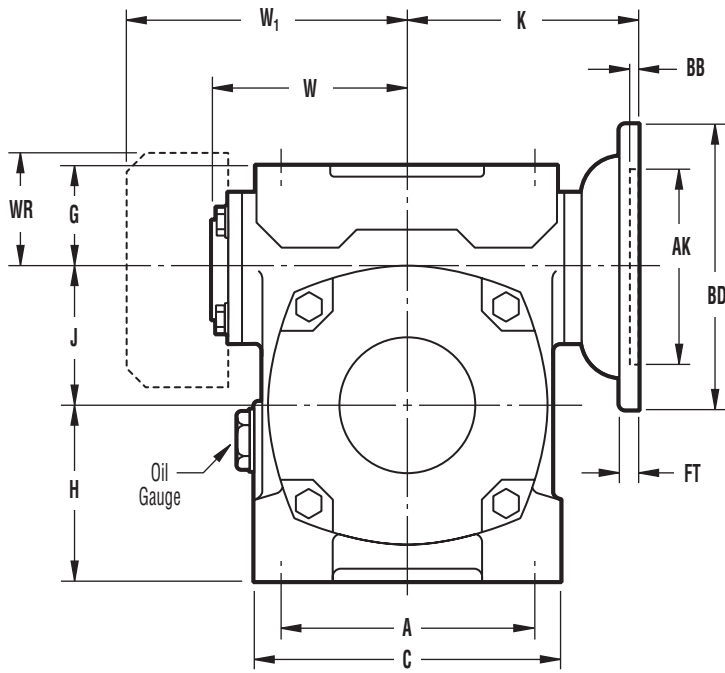
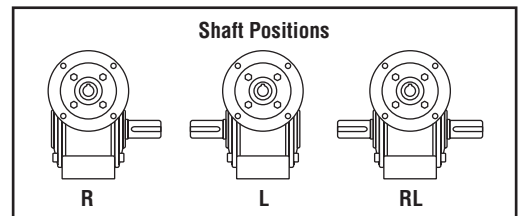


# Model IC



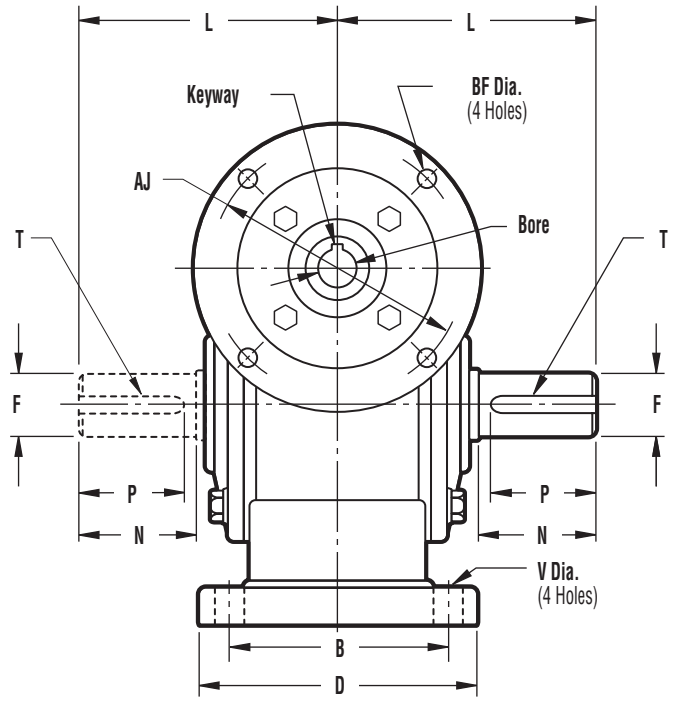
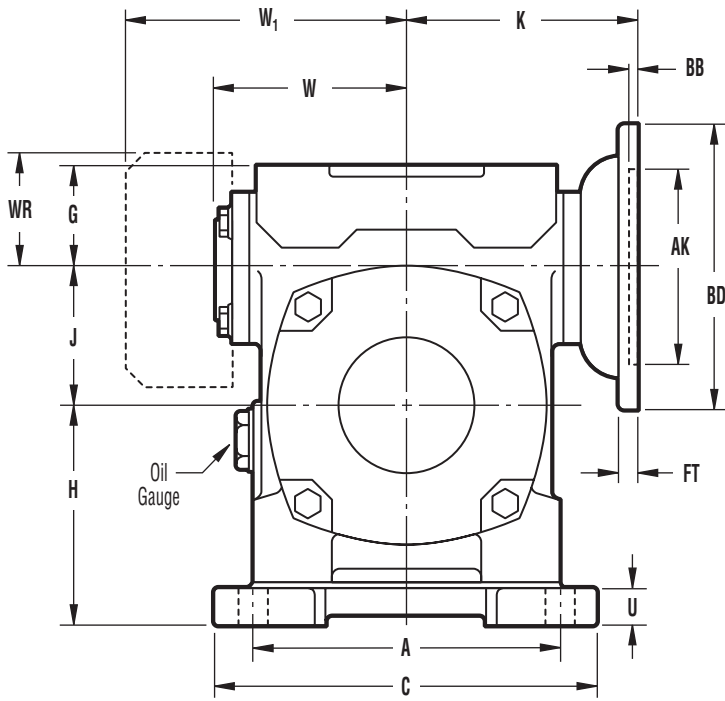
Size	A	B	C	D	G	H	J	K	L	W	W <sub>1</sub>	WR	Y	Z	Low Speed Shaft			
															F	N	P	T
25	2.63	1.69	3.25	2.50	1.31	1.31	1.00	3.16	2.88	1.81			1/4 - 20	7/16	.500	1.19	.98	1/8 X 1/16
34	2.76	1.93	3.43	2.44	1.22	1.65	1.33	3.23	3.35	2.44			1/4 - 20	7/16	.625	1.38	1.18	3/16 X 3/32
40	3.15	2.13	3.90	2.68	1.34	2.09	1.57	3.41	3.35	2.64			5/16 - 18	5/8	.625	1.38	1.18	3/16 X 3/32
45	4.19	2.75	4.82	3.35	1.94	2.06	1.75	3.92	4.29	2.95			5/16 - 18	5/8	.750	1.94	1.77	3/16 X 3/32
50	3.54	1.97	4.49	2.68	1.38	2.56	1.97	3.33	3.74	2.97			5/16 - 18	5/8	.750	1.57	1.38	3/16 X 3/32
60	3.94	2.13	4.96	3.11	1.65	2.95	2.36	4.00	4.33	3.27			3/8 - 16	3/4	1.000	1.97	1.77	1/4 X 1/8
70	4.92	2.60	5.98	3.46	1.97	3.35	2.76	4.53	5.12	3.80			3/8 - 16	3/4	1.125	2.36	2.17	1/4 X 1/8
80	5.71	2.95	6.69	3.98	2.36	3.62	3.15	4.92	5.51	4.27			3/8 - 16	3/4	1.375	2.56	2.36	5/16 X 5/32
100	7.28	3.35	8.82	4.49	2.95	4.53	3.94	5.93	6.69	5.34			1/2 - 13	15/16	1.500	2.95	2.56	3/8 X 3/16
120	8.86	3.94	10.24	5.31	3.15	5.51	4.72	6.97	7.48		8.90	3.86	1/2 - 13	15/16	1.750	3.35	2.95	3/8 X 3/16
135	10.24	3.94	11.81	5.51	3.35	6.51	5.31	8.66	8.27		9.70	3.86	5/8 - 11	1 1/8	2.250	3.74	3.35	1/2 X 1/4
155	11.81	4.33	13.78	6.10	4.06	7.99	6.10	9.65	9.92		11.50	4.70	5/8 - 11	1 1/8	2.500	4.33	3.94	5/8 X 5/16
175	13.00	4.33	15.35	6.46	4.84	8.78	6.89	12.01	10.31		11.70	4.70	3/4 - 10	1 3/8	2.750	4.33	3.94	5/8 X 5/16
200	14.17	5.91	16.54	7.87	5.12	9.65	7.87	12.80	12.01		13.50	5.60	3/4 - 10	1 3/8	2.875	4.92	4.53	3/4 X 3/8
225	15.75	6.30	18.50	8.66	5.71	10.83	8.86	13.78	13.19		14.50	5.60	1 - 8	1 3/4	3.250	5.51	5.12	3/4 X 3/8
250	17.72	6.69	20.47	9.06	5.91	11.81	9.84	14.96	14.17		17.00	6.30	1 - 8	1 3/4	3.500	6.10	5.71	7/8 X 7/16

NEMA Flange	AJ	AK	BD	BF	FT	BB	Bore	Keyway
42CZ	3.750	3.00	4.63	.313	.281	.156	.500	1/8 X 1/16
56C	5.875	4.50	6.50	.438	.313	.156	.625	3/16 X 3/32
140TC	5.875	4.50	6.50	.438	.313	.156	.875	3/16 X 3/32
180TC	7.250	8.50	9.00	.531	.375	.188	1.125	1/4 X 1/8
210TC	7.250	8.50	9.00	.531	.375	.188	1.375	5/16 X 5/32
250TC	7.250	8.50	9.00	.531	.375	.188	1.625	3/8 X 3/16



Dimensions in inches

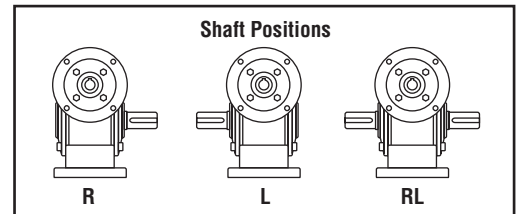
# Model IC with Horizontal Base



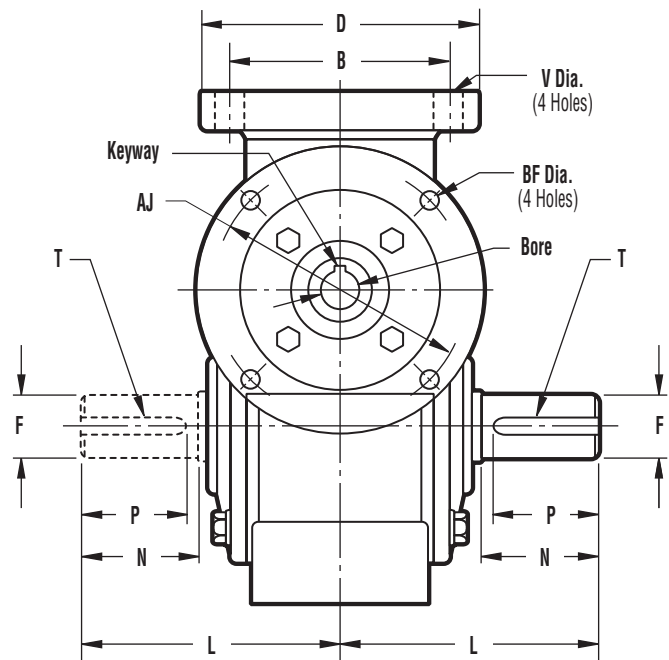
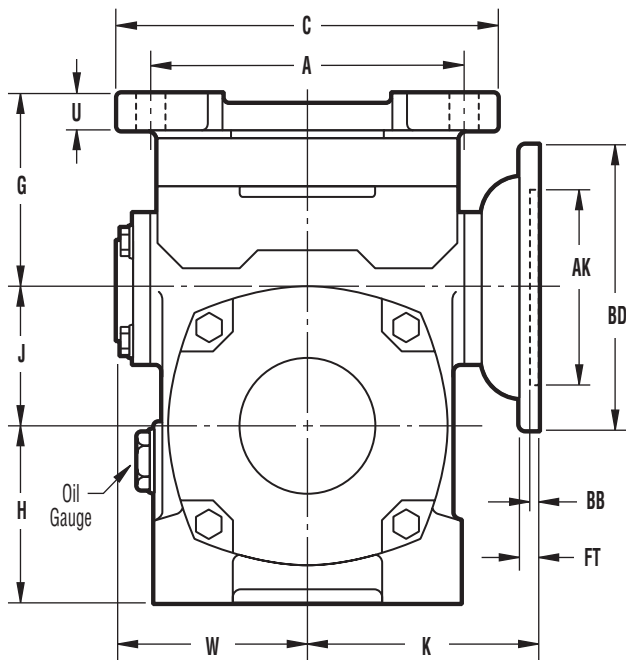
Size	A	B	C	D	G	H	J	K	L	U	V	W	W <sub>1</sub>	WR	Low Speed Shaft			
															F	N	P	T
25	3.75	2.88	4.63	3.69	1.31	1.75	1.00	3.16	2.88	.38	.34	1.81			.500	1.19	.98	1/8 X 1/16
34	3.31	3.31	4.13	4.13	1.22	2.12	1.33	3.23	3.35	.39	.34	2.44			.625	1.38	1.18	3/16 X 3/32
40	3.94	3.54	4.92	4.33	1.34	2.59	1.57	3.41	3.35	.43	.41	2.64			.625	1.38	1.18	3/16 X 3/32
45	4.97	4.56	5.94	5.50	1.94	2.65	1.75	3.92	4.29	.50	.43	2.95			.750	1.94	1.77	3/16 X 3/32
50	4.33	3.74	5.51	4.72	1.38	3.15	1.97	3.33	3.74	.51	.43	2.97			.750	1.57	1.38	3/16 X 3/32
60	4.72	4.13	5.91	5.12	1.65	3.66	2.36	4.00	4.33	.59	.43	3.27			1.000	1.97	1.77	1/4 X 1/8
70	5.91	4.53	7.48	5.91	1.97	4.14	2.76	4.53	5.12	.69	.59	3.80			1.125	2.36	2.17	1/4 X 1/8
80	7.09	5.31	8.66	6.69	2.36	4.41	3.15	4.92	5.51	.69	.59	4.27			1.375	2.56	2.36	5/16 X 5/32
100	8.66	6.10	10.63	7.48	2.95	5.51	3.94	5.93	6.69	.87	.59	5.34			1.500	2.95	2.56	3/8 X 3/16
120	10.24	7.09	12.60	9.06	3.15	6.69	4.72	6.97	7.48	1.02	.71		8.90	3.86	1.750	3.35	2.95	3/8 X 3/16
135	11.42	7.87	13.78	9.84	3.35	7.88	5.31	8.66	8.27	1.18	.71		9.70	3.86	2.250	3.74	3.35	1/2 X 1/4
155	13.39	8.66	15.75	11.02	4.06	9.25	6.10	9.65	9.92	1.10	.79		11.50	4.70	2.500	4.33	3.94	5/8 X 5/16
175	13.78	9.84	16.14	12.20	4.84	10.24	6.89	12.01	10.31	1.26	.79		11.70	4.70	2.750	4.33	3.94	5/8 X 5/16
200	13.78	11.42	17.13	14.17	5.12	11.42	7.87	12.80	12.01	1.57	.87		13.50	5.60	2.875	4.92	4.53	3/4 X 3/8
225	15.35	12.99	19.29	16.14	5.71	12.60	8.86	13.78	13.19	1.57	1.06		14.50	5.60	3.250	5.51	5.12	3/4 X 3/8
250	17.32	14.96	21.46	18.11	5.91	13.78	9.84	14.96	14.17	1.77	1.06		17.00	6.30	3.500	6.10	5.71	7/8 X 7/16

Dimensions in inches

NEMA Flange	AJ	AK	BD	BF	FT	BB	Bore	Keyway
42CZ	3.750	3.00	4.63	.313	.281	.156	.500	1/8 X 1/16
56C	5.875	4.50	6.50	.438	.313	.156	.625	3/16 X 3/32
140TC	5.875	4.50	6.50	.438	.313	.156	.875	3/16 X 3/32
180TC	7.250	8.50	9.00	.531	.375	.188	1.125	1/4 X 1/8
210TC	7.250	8.50	9.00	.531	.375	.188	1.375	5/16 X 5/32
250TC	7.250	8.50	9.00	.531	.375	.188	1.625	3/8 X 3/16



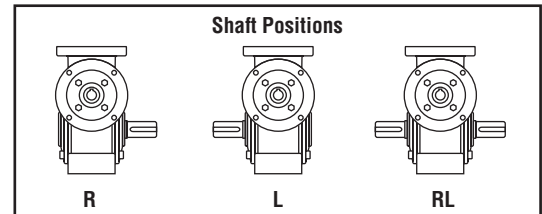
# Model IC with Riser Block and Horizontal Base



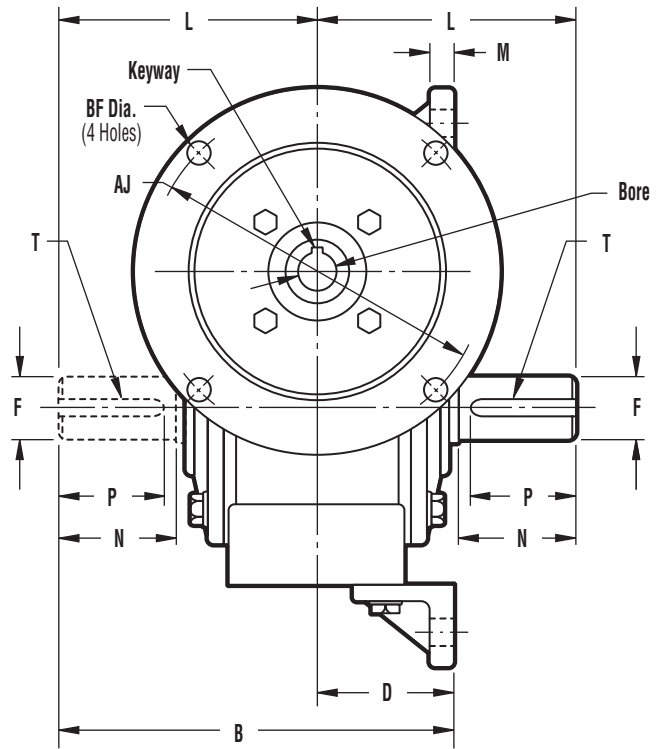
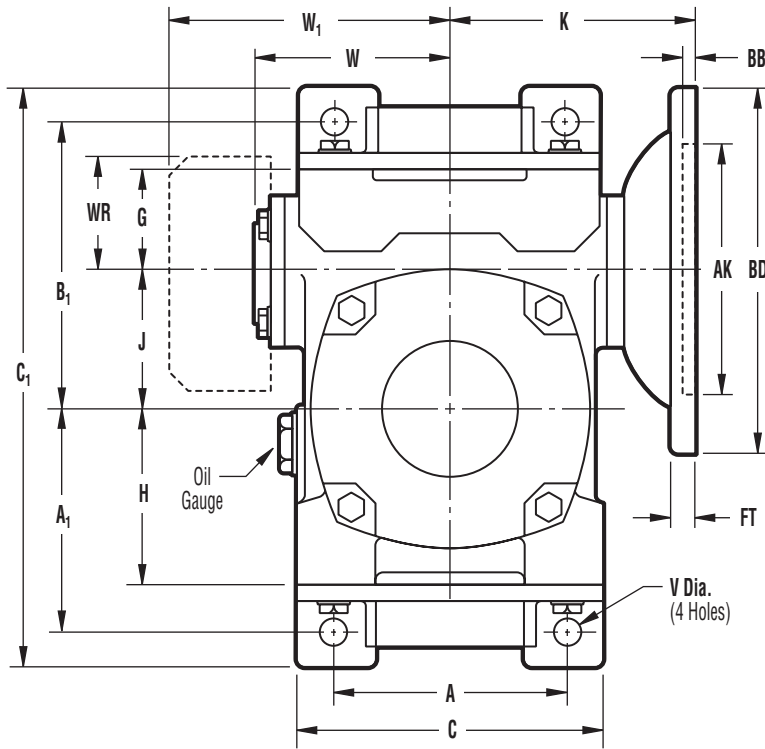
Size	A	B	C	D	G	H	J	K	L	U	V	W	Low Speed Shaft			
													F	N	P	T
25	3.75	2.88	4.63	3.69	2.94	1.31	1.00	3.16	2.88	.38	.34	1.81	.500	1.19	.98	1/8 X 1/16
34	3.31	3.31	4.13	4.13	4.00	1.65	1.33	3.23	3.35	.39	.34	2.44	.625	1.38	1.18	3/16 X 3/32
40	3.94	3.54	4.92	4.33	4.00	2.09	1.57	3.41	3.35	.43	.41	2.64	.625	1.38	1.18	3/16 X 3/32
45	4.97	4.56	5.94	5.50	4.32	2.06	1.75	3.92	4.29	.50	.43	2.95	.750	1.94	1.77	3/16 X 3/32
50	4.33	3.74	5.51	4.72	4.00	2.56	1.97	3.33	3.74	.51	.43	2.97	.750	1.57	1.38	3/16 X 3/32
60	4.72	4.13	5.91	5.12	4.00	2.95	2.36	4.00	4.33	.59	.43	3.27	1.000	1.97	1.77	1/4 X 1/8
70	5.91	4.53	7.48	5.91	5.50	3.35	2.76	4.53	5.12	.69	.59	3.80	1.125	2.36	2.17	1/4 X 1/8

NEMA Flange	AJ	AK	BD	BF	FT	BB	Bore	Keyway
42CZ	3.750	3.00	4.63	.313	.281	.156	.500	1/8 X 1/16
56C	5.875	4.50	6.50	.438	.313	.156	.625	3/16 X 3/32
140TC	5.875	4.50	6.50	.438	.313	.156	.875	3/16 X 3/32
180TC	7.250	8.50	9.00	.531	.375	.188	1.125	1/4 X 1/8

Dimensions in inches



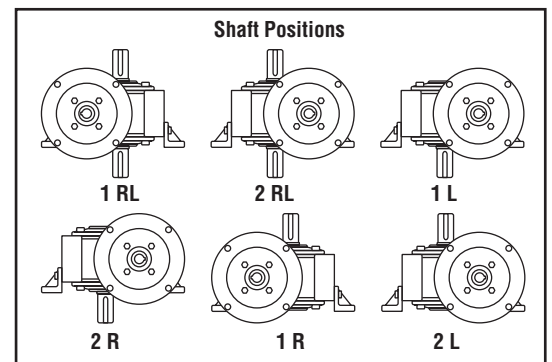
# Model IC with Vertical Base



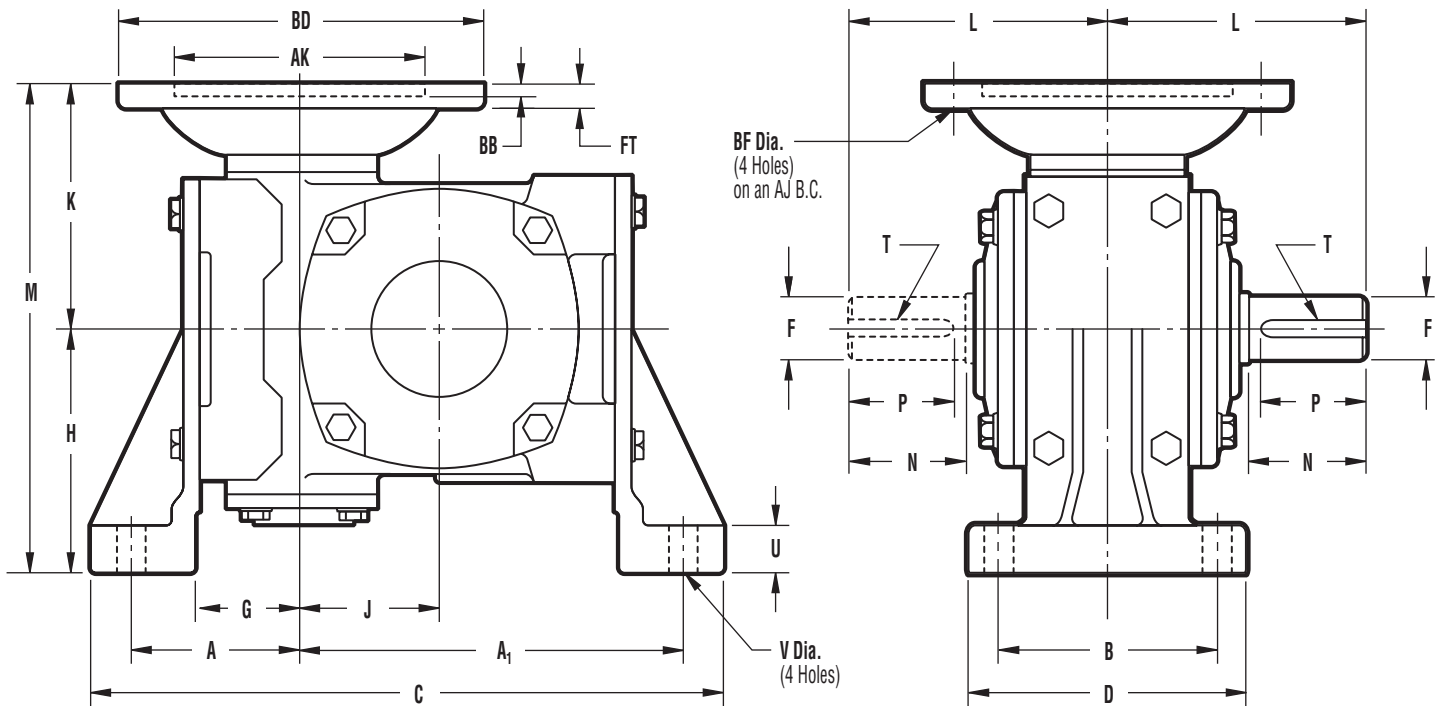
Size	A	A <sub>1</sub>	B	B <sub>1</sub>	C	C <sub>1</sub>	D	G	H	J	K	L	M	V	W	W <sub>1</sub>	WR	Low Speed Shaft			
																		F	N	P	T
25	2.31	2.06	4.50	3.06	3.25	6.06	1.63	1.31	1.31	1.00	3.16	2.88	.31	.28	1.81			.500	1.19	.98	1/8 X 1/16
34	2.76	2.32	5.10	3.22	3.46	6.25	1.75	1.22	1.65	1.33	3.23	3.35	.31	.28	2.44			.625	1.38	1.18	3/16 X 3/32
40	3.15	2.95	5.24	3.78	4.02	7.68	1.89	1.34	2.09	1.57	3.41	3.35	.43	.35	2.64			.625	1.38	1.18	3/16 X 3/32
45	3.94	3.13	6.79	4.75	4.88	8.98	2.50	1.94	2.06	1.75	3.92	4.29	.59	.44	2.95			.750	1.94	1.77	3/16 X 3/32
50	3.54	3.54	5.71	4.33	4.49	8.90	1.97	1.38	2.56	1.97	3.33	3.74	.55	.44	2.97			.750	1.57	1.38	3/16 X 3/32
60	3.94	4.02	6.50	5.08	4.92	10.28	2.17	1.65	2.95	2.36	4.00	4.33	.59	.44	3.27			1.000	1.97	1.77	1/4 X 1/8
70	4.72	4.72	7.68	6.10	6.06	12.01	2.56	1.97	3.35	2.76	4.53	5.12	.71	.59	3.80			1.125	2.36	2.17	1/4 X 1/8
80	5.51	5.20	8.36	7.09	6.85	13.46	2.85	2.36	3.62	3.15	4.92	5.51	.71	.59	4.27			1.375	2.56	2.36	5/16 X 5/32
100	7.48	6.10	10.26	8.46	8.86	15.95	3.57	2.95	4.53	3.94	5.93	6.69	.79	.59	5.34			1.500	2.95	2.56	3/8 X 3/16
120	8.86	7.68	11.61	10.04	10.43	19.69	4.13	3.15	5.51	4.72	6.97	7.48	.98	.71		8.90	3.86	1.750	3.35	2.95	3/8 X 3/16
135	9.84	8.66	12.60	10.83	11.81	21.46	4.33	3.35	6.50	5.31	8.66	8.27	1.10	.71		9.70	3.86	2.250	3.74	3.35	1/2 X 1/4
155	11.42	10.16	15.53	12.32	13.78	25.04	5.61	4.06	7.99	6.10	9.65	9.92	1.18	.79		11.50	4.70	2.500	4.33	3.94	5/8 X 5/16
175	13.00	11.22	16.22	14.17	15.35	27.76	5.91	4.84	8.78	6.89	12.01	10.31	1.26	.79		11.70	4.70	2.750	4.33	3.94	5/8 X 5/16
200	14.17	12.09	18.90	15.43	16.54	30.28	6.89	5.12	9.65	7.87	12.80	12.01	1.38	.87		13.50	5.60	2.875	4.92	4.53	3/4 X 3/8
225	15.75	13.58	20.67	17.32	18.50	34.06	7.48	5.71	10.83	8.86	13.78	13.19	1.50	1.06		14.50	5.60	3.250	5.51	5.12	3/4 X 3/8
250	17.72	14.76	22.04	18.70	20.47	36.61	7.87	5.91	11.81	9.84	14.96	14.17	1.57	1.06		17.00	6.30	3.500	6.10	5.71	7/8 X 7/16

NEMA Flange	AJ	AK	BD	BF	FT	BB	Bore	Keyway
42CZ	3.750	3.00	4.63	.313	.281	.156	.500	1/8 X 1/16
56C	5.875	4.50	6.50	.438	.313	.156	.625	3/16 X 3/32
140TC	5.875	4.50	6.50	.438	.313	.156	.875	3/16 X 3/32
180TC	7.250	8.50	9.00	.531	.375	.188	1.125	1/4 X 1/8
210TC	7.250	8.50	9.00	.531	.375	.188	1.375	5/16 X 5/32
250TC	7.250	8.50	9.00	.531	.375	.188	1.625	3/8 X 3/16

Dimensions in inches



# Model IC with J Mount Base



Size	A	A <sub>1</sub>	B	C	D	G	H	J	K	L	M	U	V	Low Speed Shaft			
														F	N	P	T
25	2.06	3.06	1.75	6.06	2.66	1.40	2.25	1.00	3.16	2.88	5.41	.44	11/32	.500	1.19	.98	1/8 X 1/16
34	2.32	4.09	2.00	7.28	2.91	1.50	2.94	1.33	3.23	3.35	6.17	.53	11/32	.625	1.38	1.18	3/16 X 3/32
40	2.46	4.79	2.50	8.25	3.72	1.56	3.50	1.57	3.41	3.35	6.91	.69	13/32	.625	1.38	1.18	3/16 X 3/32
45	2.87	4.75	2.50	8.62	3.72	2.00	3.50	1.75	3.92	4.29	7.42	.69	13/32	.750	1.94	1.77	3/16 X 3/32
50	2.74	5.89	2.62	9.75	3.84	1.75	3.94	1.97	3.33	3.74	7.27	.72	15/32	.750	1.57	1.38	3/16 X 3/32
60	2.76	6.42	2.87	10.31	4.12	1.75	4.06	2.36	4.00	4.33	8.06	.75	15/32	1.000	1.97	1.77	1/4 X 1/8
70	3.12	7.25	3.12	11.88	4.53	2.00	4.75	2.76	4.53	5.12	9.28	.87	17/32	1.125	2.36	2.17	1/4 X 1/8

NEMA Flange	AJ	AK	BD	BF	FT	BB	Bore	Keyway
42CZ	3.750	3.00	4.63	.313	.281	.156	.500	1/8 X 1/16
56C	5.875	4.50	6.50	.438	.313	.156	.625	3/16 X 3/32
140TC	5.875	4.50	6.50	.438	.313	.156	.875	3/16 X 3/32
180TC	7.250	8.50	9.00	.531	.375	.188	1.125	1/4 X 1/8

Dimensions in inches

