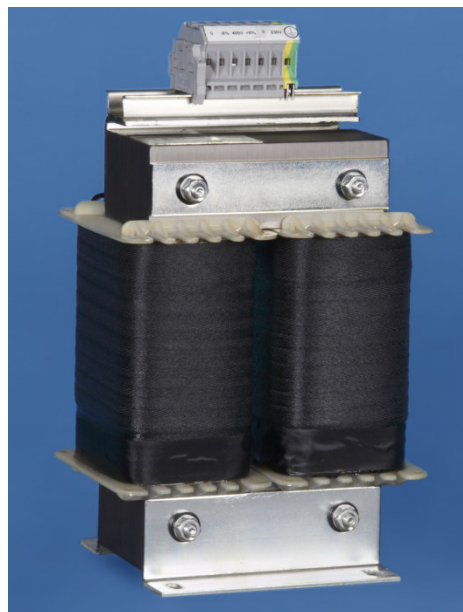
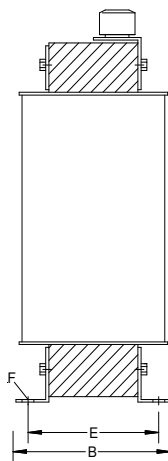
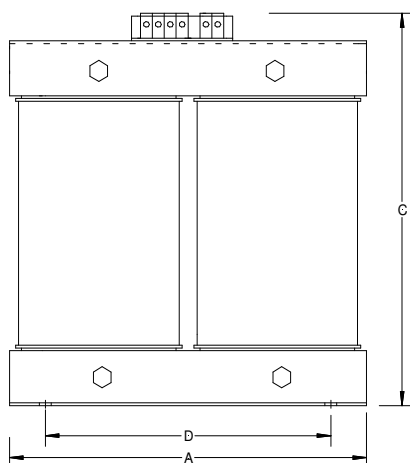


Single – phase control transformers

1.2 Type STU 1.6 – 6.3 KVA, vertical

Corresponding to VDE 0570/ DIN EN 61558-2-2, DIN EN 61558-2-4



Construction:

Open transformer, separate windings. Type protection IP 00, suitable for installations up to IP 23. Corrosion protection via complete impregnation. Insulation class T50B (T40E).

Type	Power KVA	*Short-term performance VA	Copper weight kg	Total weight kg	Dimensioning					
					A	B	C	D	E	F
					mm	mm	mm	mm	mm	mm
STU 1.6	1.6	4,350	4.50	17.0	160	141	208	100	103	7.0
STU 2.0	2.0	5,150	4.90	21.0	176	141	228	112	102	10.0
STU 2.5	2.5	9,000	7.50	25.0	200	135	260	124	107	10.0
STU 3.0	3.0	11100	8.80	33.0	200	147	260	124	119	10.0
STU 4.0	4.0	13200	11.50	27.0	226	138	357	136	110	11.0
STU 5.0	5.0	14100	12.80	32.0	226	172	357	136	144	11.0
STU 6.3	6.3	22000	16.50	58.0	280	173	360	176	143	12.0

**see technical annotations 17.1*

Standard voltages:

Primary 230 V and/or 400 V +/- 5%
Secondary 24 V or 230 V
Other voltages on request

Ordering example:

Primary 400 V +/- 5%
Secondary 230 V 1.6 KVA
Reference number: STU1.6400230

To assure see technical data 17.2.