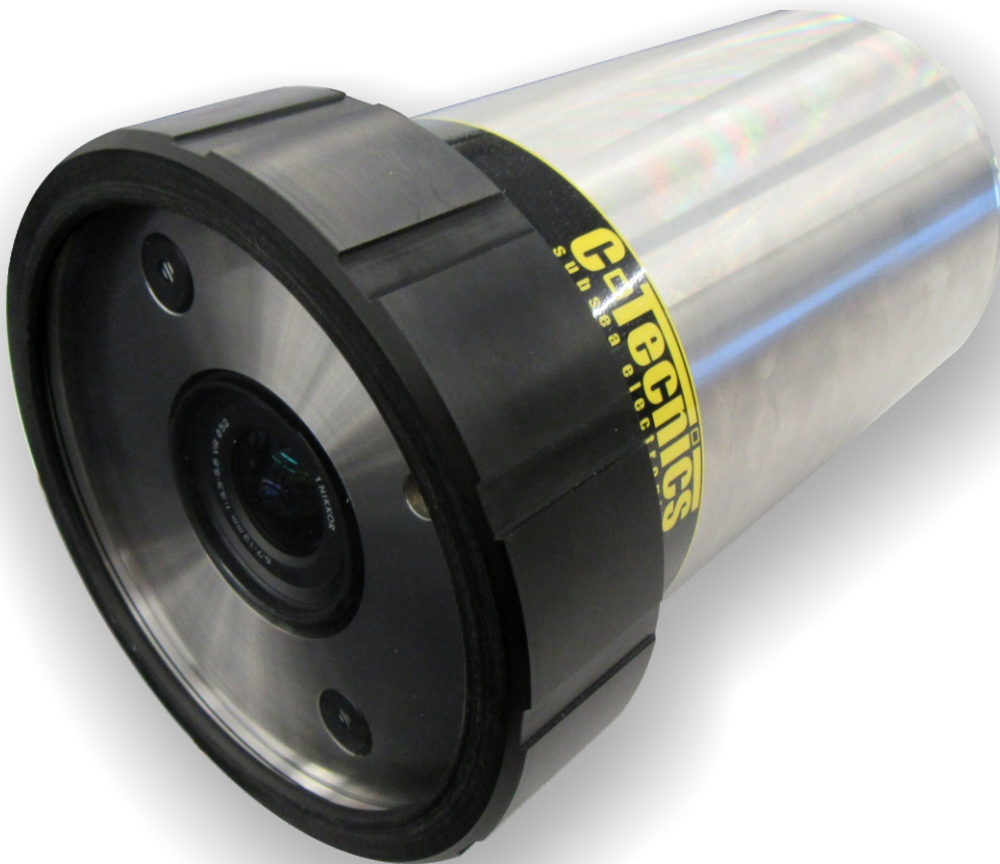


The CT3023 SLV System (Stills, Laser and Video) is capable of recording High-Definition (HD) video whilst also offering the ability to also take full resolution stills images, without interrupting the video recording.

The system operates in 3 modes: Video Recording Only, Stills Capture Only or Video and Stills simultaneously. There is a live SD video feed that can be used as a visual reference by the operator, the HD video and stills are recorded locally on internal memory.

Once the deployment has finished, all video recording and still images can be easily downloaded via a USB connection. The SLV System also has in-built line lasers set at 100mm apart for scaling. Controls are through RS232/RS485 connection via software.

The CT3023 SLV System is ideal for use in a range of marine and scientific research applications and ROV operations.



Specifications

Camera Electrical:

Image Resolution:	20.8MP sensor (5568 x 3712)
Sensor:	CMOS
Lens Focal Length:	6.7-13mm (6.7mm standard setting)
Focus:	41-point Autofocus or Manual
Angle of View:	72deg diagonal in water (6.7mm focal length setting) to 45deg diagonal in water (13mm)
Light Sensitivity:	ISO200 to ISO12800
Scene Illumination:	1 lux
Flashgun Control (If Installed):	Automatic or Manual
Visual Reference:	Via SD video feed
Internal Memory:	256GB
Modes:	Video Only, Stills Only, Simultaneous Video and Stills
Power Input:	12 – 24V DC
Power Consumption:	1A
Control:	RS232, RS485

Camera Mechanical:

Diameter:	150mm at port end, 130mm at connector end
Length:	240mm (excl. connector)
Housing Material:	Hard Black Anodised Aluminium (standard) Options: 316 Stainless Steel, Titanium Grade 5
Depth Rating:	1000m
Connector:	Camera: Burton 5506-1508 Flash Link: Burton 5506-1608

Video Recording Resolution Selectable:

1080/60p 1920x1080p Full HD @60fps
1080/30p 1920x1080p Full HD @30fps
4K/15p 3840x2160p @15fps
720/60p 1280x720p 'HD Ready' @60fps
720/30p 1280x720p 'HD Ready' @30fps

Video File Format: MOV
Video Compression: H.264/MPEG-4

Video Segment Size, User Selectable:

4K up to 10 minute segments (up to 10 Hours recording, no stills, from 256GB internal memory)
HD up to 15 minute segments (up to 15 Hours recording, no stills, from 256GB internal memory)
New file created for each new segment.

Stills Resolution Selectable:

Aspect Ratio 3:2 -
L – 5568 x 3712
M – 4176 x 2784
S – 2784 x 1856
RAW, JPEG or RAW+JPEG Capture
In Video recording mode, stills resolution 5568 x 3712, JPEG only.
Approx. 6000 stills images, RAW+JPEG (no video)

A range of robust and portable control units and subsea cables are available for use with this product

