

## VALVES IN PHASE OUT

Valves replaced by new VEI-16 (RE18324-09)

Solenoid operated valves direct acting  
spool 4-way 2-position  
Common cavity, Size 08

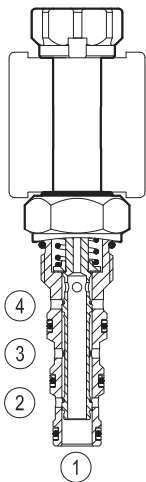
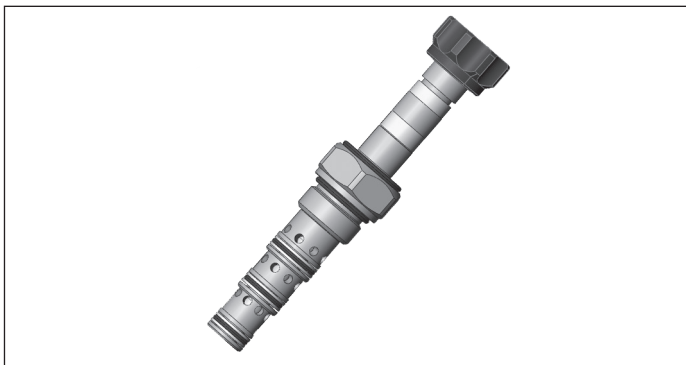
VED-8I-42

OD.14 - X - 58 - Y - Z

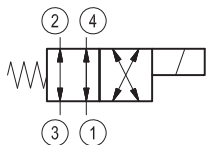
**RE 18324-62**

Edition: 03.2016

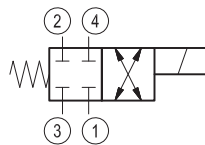
Replaces: 01.2006



### ▼ Version 40



### ▼ Version 41



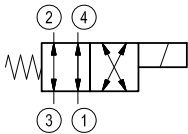
## Technical data

General		
Weight		0.13 kg (0.29 lbs)
Installation orientation		Any
Ambient temperature range -30 to 60 °C (-22 to 140 °F) - coil 20W		
Hydraulic		
Max. operating pressure		210 bar (3045 psi)
Max. flow		10 l/min. (3 gpm)
Max. internal leakage		40 cm <sup>3</sup> /min. (2.4 cu.in./min.)
Fluid temperature range		-20 to 80 °C (-4 to 176 °F)
Fluids: Mineral-based or synthetics with lubricating properties at viscosities of 20 to 380 mm <sup>2</sup> /s (cSt)		
Installation torque		39 - 51 Nm (29 - 38 ft-lbs)
Filtration		Nominal value max. 10 µm (NAS 8) ISO 4406 19/17/14
Cavity		CA-08A-4N
Seal kit	code	RG08A4010530100
	material no.	R930005582
Seal kit coil	code	RG12I1PNBR7010
	material no.	R934003957
Other technical data		See data sheet 18350-50
Electrical		
Type of voltage		DC voltage
Coil type		S8-356
Supply voltage		See data sheet 18325-90
Power consumption		See data sheet 18325-90
Duty cycle coil		See data sheet 18325-90
Type of protection		See data sheet 18325-90
Note: Coils must be ordered separately		

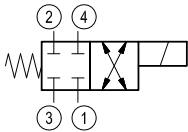
Ordering code

OD.14	X	58	Y	00	00
-------	---	----	---	----	----

Solenoid operated valves direct acting  
spool 4-way 2-position

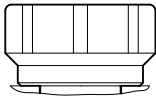


40

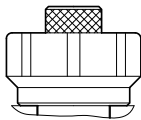


41

30 = Standard type



40 = knob style manual override

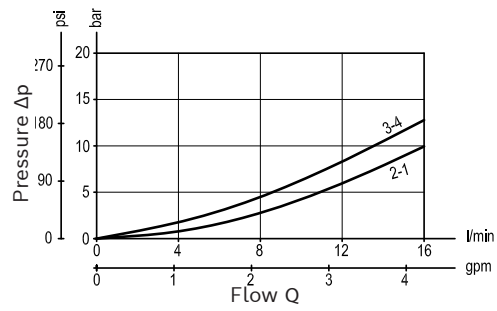
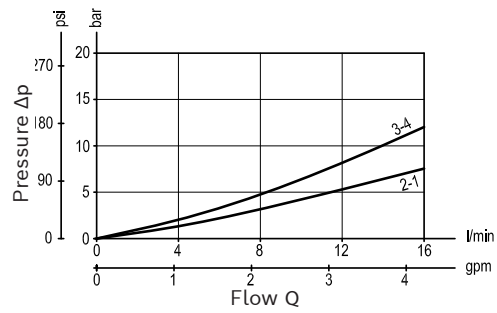


Common cavity: CA-08A-3N

Preferred types

Type	Material number
OD144058300000	R901113693
OD144058400000	R901126899
OD144158300000	R901126903
OD144158400000	R901126905

Type	Material number

**Characteristic curves****Version 40****Version 41**

**Dimensions**

▼ **Solenoid operated valves direct acting spool 4-way 2-position**

