

# Proportional valves 2-way double lock normally closed Special cavity, 019-E

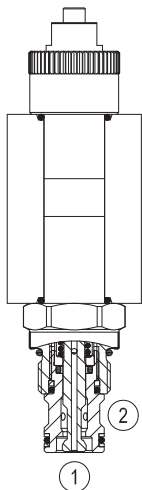
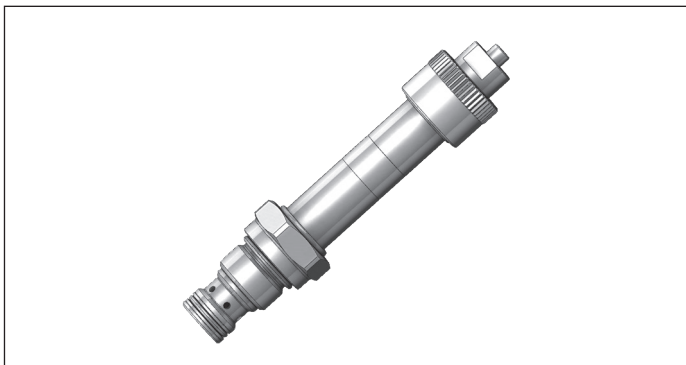
VEPN-19E-16

OD.95.31.19.54 - Y - 00

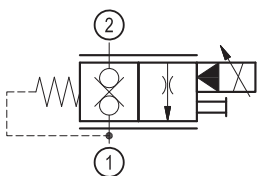
**RE 18323-71**

Edition: 07.2022

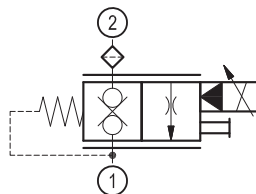
Replaces: 09.2019



## ▼ Version 31



## ▼ Version 33



## Technical data

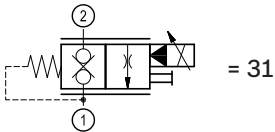
General		
Weight		0.20 kg (0.45 lbs)
Installation orientation		Optional
Ambient temperature range		-30 to 60 °C (-22 to 140 °F)
Hydraulic		
Max. operating pressure		250 bar (3600 psi)
Flow range		5 - 20 l/min. (1.3 - 5 gpm)
Fatigue cycle life		1 million cycles at 250 bar
Max. internal leakage		1 cm <sup>3</sup> /min. (0.1 cu.in/min.)
Fluid temperature range		-20 to 80 °C (-4 to 176 °F)
Fluids: Mineral-based or synthetics with lubricating properties at viscosities of 15 to 380 mm <sup>2</sup> /s (cSt)		
Installation torque		34 -41 Nm (25 - 30 ft-lbs)
Recommended degree of fluid contamination		Nominal value max. 10 µm (NAS 8) ISO 4406 19/17/14
Cavity		019-E see 18325-75
Lines bodies and standard assemblies		Please refer to section “Hydraulic integrated circuit” or consult factory
Seal kit	code	RG19E201053010
	material no.	R934003561
Seal kit coil	code	RG16A1PMVQ0010
	material no.	R934003962
Other technical data		See data sheet 18350-50
Electrical		
Type of voltage		DC voltage
Coil type		R7
Supply voltage		12 - 24 DC
Nominal voltage		± 10%
Power consumption		28 W
Duty cycle coil		100
Type of protection		See data sheet 18325-90
Note: Coils must be ordered separately		

Ordering code

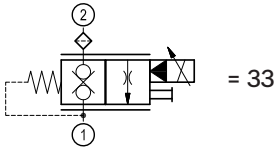
OD.95	31	19	54	*	00
-------	----	----	----	---	----

Proportional valves 2-way  
double lock normally closed

monodirectional type

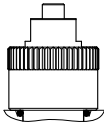


monodirectional type

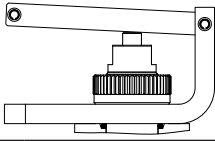


Special cavity: 019-E

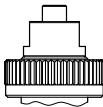
91 = Standard type (not suitable for lever option)



90 = Lever option for flexible cable included



00 = Standard type (suitable for lever option) \*

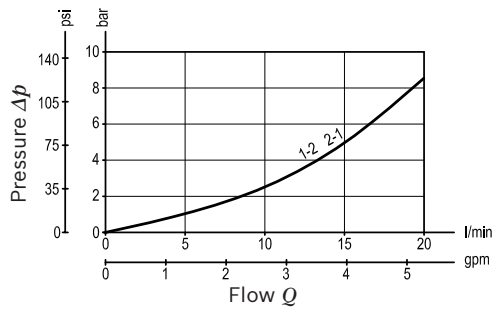


\* Lever must be ordered separately.

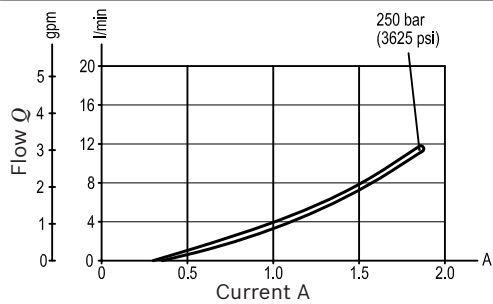
Preferred types

Type	Material number
OD953119549000	R930053668
OD953119549100	R930053669
OD953119540000	R934005238
OD953319540000	R930069905

Type	Material number

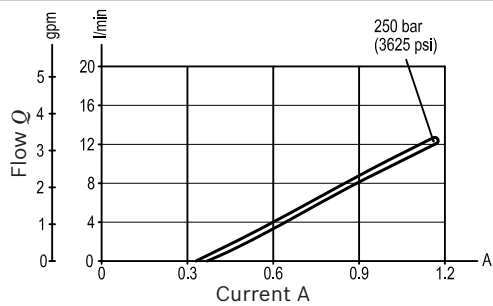
**Characteristic curves****Wide open pressure drop****Flow vs. Current at various differential pressures**

R7 12V  
I max. 1.9A



P bar (psi)	I (A) min.
50 (725)	0.9 ± 0.1
150 (2175)	0.7 ± 0.1
250 (3625)	0.5 ± 0.1

R7 24V  
I max. 0.950A



P bar (psi)	I (A) min.
50 (725)	0.55 ± 0.05
150 (2175)	0.45 ± 0.05
250 (3625)	0.35 ± 0.05

PMW Frequency: 120-150 Hz

Hysteresis: < 10%

Note: Performance using coil without diode.

## Dimensions

### ▼ Proportional valves 2-way double lock

