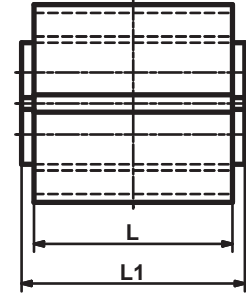
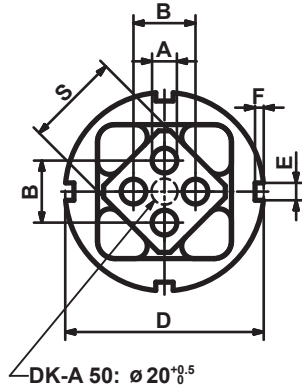


Rubber Suspension Element

DK-A



Part no.	Type	$\varnothing A$	B	$\varnothing D$	E	F	$\square S$	L	L1	Weight [kg]
01 071 001	DK-A 15 × 25	$5^{+0.5}_{-0}$	10 ± 0.2	$36^{+0.5}_{-0.1}$	5	2.5	15	25	30 ± 0.2	0.05
01 071 002	DK-A 15 × 40	$5^{+0.5}_{-0}$	10 ± 0.2	$36^{+0.5}_{-0.1}$	5	2.5	15	40	45 ± 0.2	0.08
01 071 003	DK-A 15 × 60	$5^{+0.5}_{-0}$	10 ± 0.2	$36^{+0.5}_{-0.1}$	5	2.5	15	60	65 ± 0.2	0.12
01 071 004	DK-A 18 × 30	$6^{+0.5}_{-0}$	12 ± 0.3	$45^{+0.6}_{-0.1}$	5	2.5	18	30	35 ± 0.2	0.10
01 071 005	DK-A 18 × 50	$6^{+0.5}_{-0}$	12 ± 0.3	$45^{+0.6}_{-0.1}$	5	2.5	18	50	55 ± 0.2	0.16
01 071 006	DK-A 18 × 80	$6^{+0.5}_{-0}$	12 ± 0.3	$45^{+0.6}_{-0.1}$	5	2.5	18	80	85 ± 0.2	0.25
01 071 007	DK-A 27 × 40	$8^{+0.5}_{-0}$	20 ± 0.4	$62^{+0.7}_{-0.1}$	6	3	27	40	45 ± 0.2	0.25
01 071 008	DK-A 27 × 60	$8^{+0.5}_{-0}$	20 ± 0.4	$62^{+0.7}_{-0.1}$	6	3	27	60	65 ± 0.2	0.37
01 071 009	DK-A 27 × 100	$8^{+0.5}_{-0}$	20 ± 0.4	$62^{+0.7}_{-0.1}$	6	3	27	100	105 ± 0.2	0.61
01 071 010	DK-A 38 × 60	$10^{+0.5}_{-0}$	25 ± 0.4	$80^{+0.8}_{-0.1}$	7	3.5	38	60	70 ± 0.2	0.62
01 071 011	DK-A 38 × 80	$10^{+0.5}_{-0}$	25 ± 0.4	$80^{+0.8}_{-0.1}$	7	3.5	38	80	90 ± 0.2	0.82
01 071 012	DK-A 38 × 120	$10^{+0.5}_{-0}$	25 ± 0.4	$80^{+0.8}_{-0.1}$	7	3.5	38	120	130 ± 0.2	1.22
01 071 013	DK-A 45 × 80	$12^{+0.5}_{-0}$	35 ± 0.5	$95^{+1.0}_{-0.1}$	8	4	45	80	90 ± 0.2	1.14
01 071 014	DK-A 45 × 100	$12^{+0.5}_{-0}$	35 ± 0.5	$95^{+1.0}_{-0.1}$	8	4	45	100	110 ± 0.2	1.41
01 071 015	DK-A 45 × 150	$12^{+0.5}_{-0}$	35 ± 0.5	$95^{+1.0}_{-0.1}$	8	4	45	150	160 ± 0.2	2.11
01 071 016	DK-A 50 × 120	M12 × 40	40 ± 0.5	$108^{+1.2}_{-0.1}$	8	4	50	120	130 ± 0.2	2.26
01 071 017	DK-A 50 × 200	M12 × 40	40 ± 0.5	$108^{+1.2}_{-0.1}$	8	4	50	200	210 ± 0.2	3.74
01 071 018	DK-A 50 × 300	M12 × 40	40 ± 0.5	$108^{+1.2}_{-0.1}$	8	4	50	300	310 ± 0.2	5.62

List of torque and loads on page 2.3.

If no other units are specified, the numbers given are in mm.