

VBP063 ... 250-X/Z

Butterfly Valves Pneumatically actuated



ADVANTAGES

- Four sizes available: DN 63, 100, 160, 250
- Robust and compact design with low installation height
- High conductance all stainless steel housings
- With or without lateral gauge/valve flange connections
- FPM sealings
- Extremely long service lifetime
- Direct pneumatic actuation or via pilot valve
- Electrical and visual position indicator

ORDERING INFORMATION SELECTION DATA

Vacuum connection	DN 63 ISO-F	DN 100 ISO-F	DN 160 ISO-F	DN 250 ISO-K
Lateral vacuum connections	DN 10 ISO-KF DN 16 ISO-KF	2 x DN 10 ISO-KF DN 25 ISO-KF	2 x DN 10 ISO-KF DN 25 ISO-KF	2 x DN 10 ISO-KF DN 25 ISO-KF DN 40 ISO-KF

With lateral vacuum connections

Type	VBP063-X	VBP100-X	VBP160-X	VBP250-X
	253-100	253-120	253-140	253-160

Without lateral vacuum connections

Type	VBP063-Z	VBP100-Z	VBP160-Z	VBP250-Z
	253-110	253-130	253-150	253-170

SPECIFICATIONS

Cycle life	Cycles	1'000'000	1'500'000	1'500'000	1'000'000
Conductance for molecular flow					
X types	l/s	350	1000	3400	8200
Z types	l/s	400	1400	4000	8200
Tightness	mbar l/s	1×10^{-9}	1×10^{-9}	1×10^{-9}	1×10^{-9}
Pressure in either direction					
Static min. / max.	mbar / bar	1×10^{-8} / 10	1×10^{-8} / 10	1×10^{-8} / 10	1×10^{-8} / 10
Dynamic min. / max	mbar / bar	1×10^{-8} / 4	1×10^{-8} / 4	1×10^{-8} / 4	1×10^{-8} / 4
Pressure difference Δp					
In either direction	bar	4	4	4	4
Bakeout temperature housing	°C	150	150	150	150
Housing, shaft, valve plate	AISI / DIN	304 / 1.4301	304 / 1.4301	304 / 1.4301	304 / 1.4301
Seals		FPM	FPM	FPM	FPM
Weight					
X types	kg	3.8	6.5	10	15.7
Z types	kg	3.5	5	8	16

SPARE PARTS

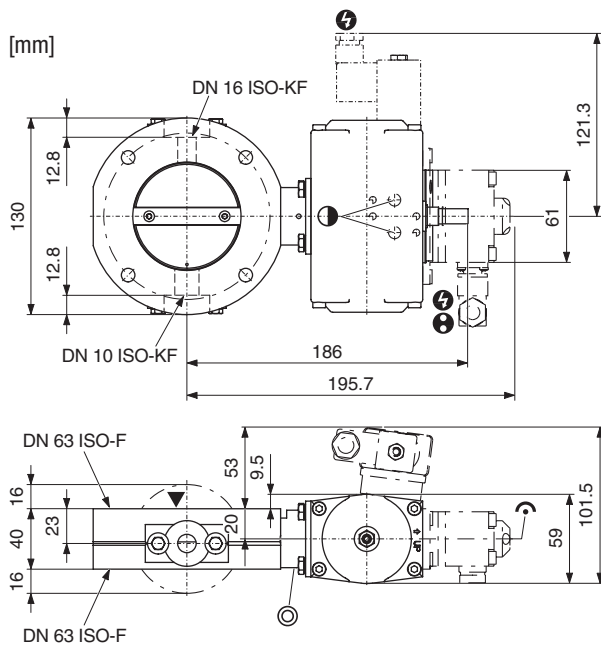
	VBP063	VBP100	VBP160	VBP250
Seal kit				
X type	215-143	215-145	215-147	215-149
Z type	215-144	215-146	215-148	215-149
Actuator	253-181	253-182	253-182	253-183

ACCESSORIES

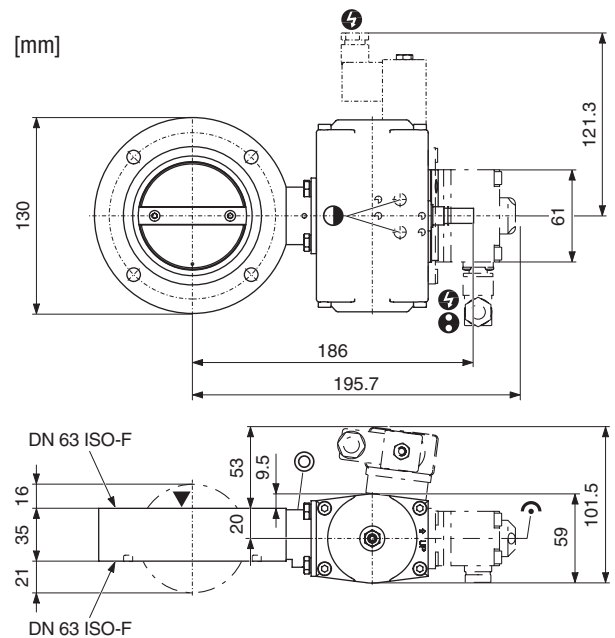
	VBP063	VBP100	VBP160	VBP250
Position indicator	253-180	253-180	253-180	253-180
Pilot valve				
230 V AC / 50 Hz	215-131	215-131	215-131	215-131
115 V AC / 60 Hz	215-132	215-132	215-132	215-132
24 V AC / 50 Hz	215-133	215-133	215-133	215-133
24 V DC / 50 Hz	215-134	215-134	215-134	215-134
Connection elements				
X type	215-212	215-214	215-216	212-225
Z type	215-213	215-215	215-217	212-225







DIMENSIONS

VBP063-X

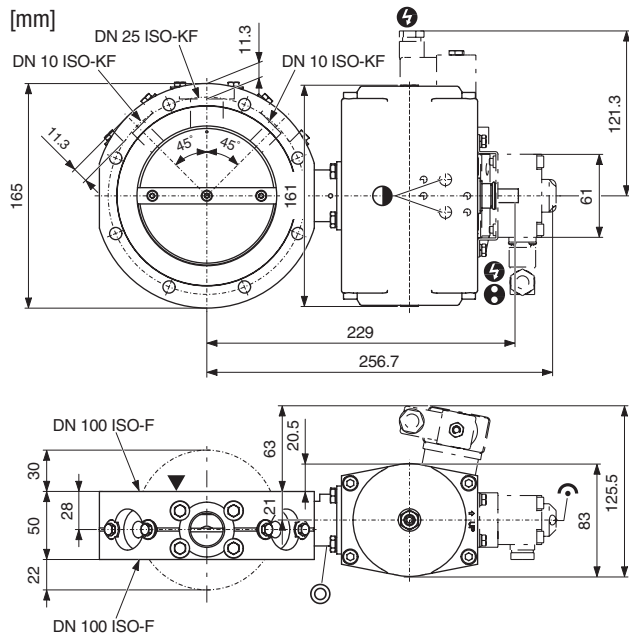


VBP063-Z



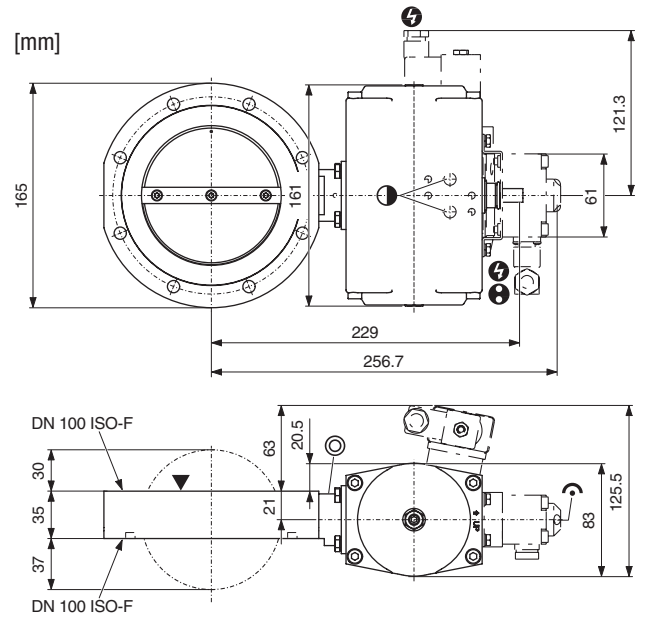
-  Compressed air connection
-  Position indicator connection
-  Visual position indicator
-  Electrical connection
-  Valve seat site
-  Leak detection opening

VBP100-X

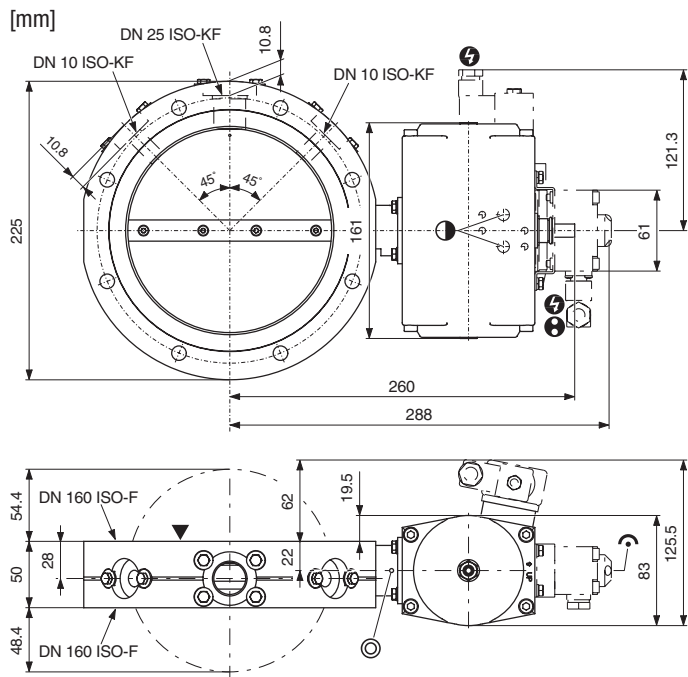


- Compressed air connection
- Position indicator connection
- Visual position indicator
- Electrical connection
- Valve seat site
- Leak detection opening

VBP100-Z

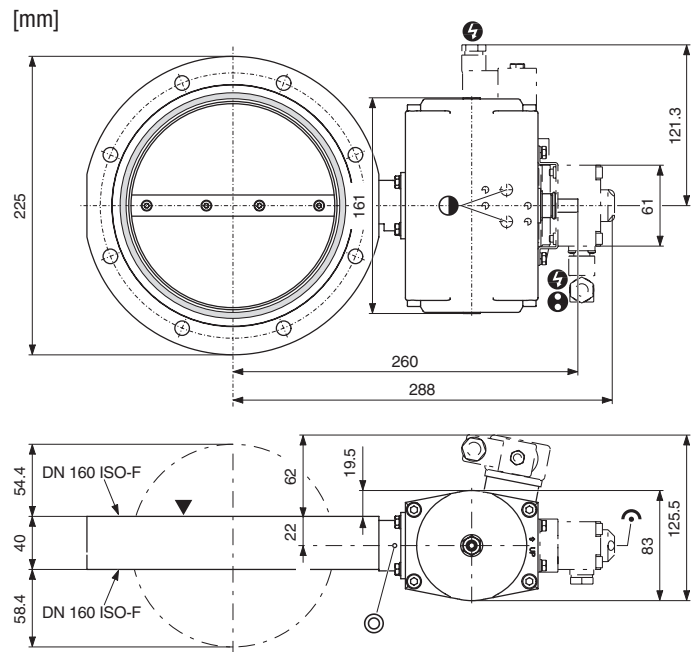


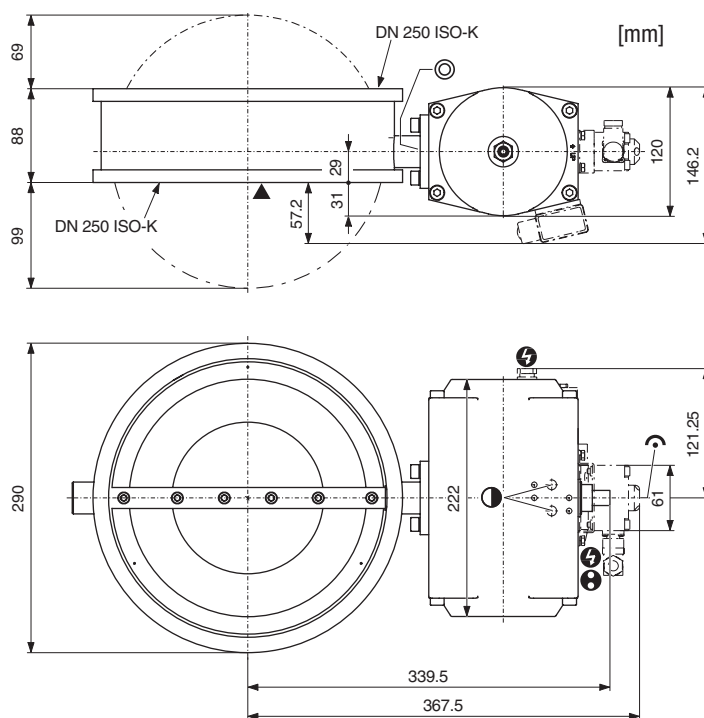
VBP160-X









- Compressed air connection
- Position indicator connection
- Visual position indicator
- Electrical connection
- Valve seat site
- Leak detection opening

VBP160-Z



VBP250-Z

-  Compressed air connection
-  Electrical connection
-  Position indicator connection
-  Valve seat site
-  Visual position indicator
-  Leak detection opening