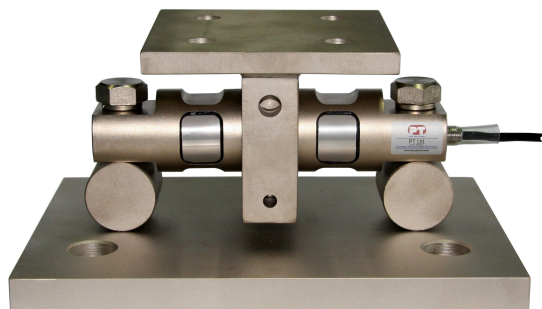
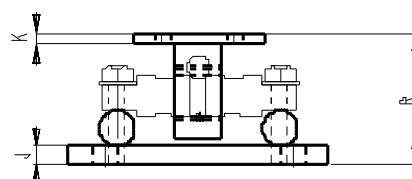
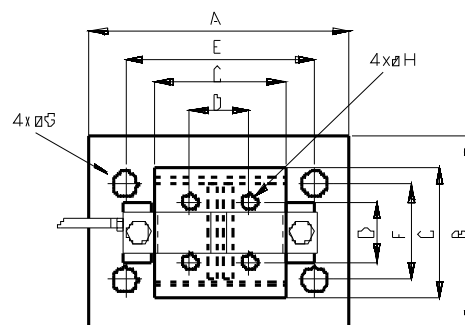


PT9000TWA

TANK WEIGHING ASSEMBLY



- Fully sealed tool steel load cell
- IP67 sealing, rugged construction
- Ideal for tanks and hoppers
- Uplift and side restraint



Dimensions

Capacity	Order	A	B	C	D	E	F	G	H	J	K	R	Weight (kg)
5klb (2268kg)*	90P05KBTASSXXX	279.4	203.2	139.7	76.2	203.2	101.6	26.9	16	19	12.7	139.2	14.45
10klb (4536kg)*	90P10KBTASSXXX	279.4	203.2	139.7	76.2	203.2	101.6	26.9	16	19	12.7	139.2	14.45
20klb (9072kg)	90P20KBTASSXXX	279.4	203.2	139.7	76.2	203.2	101.6	26.9	16	19	12.7	139.2	40.85
30klb (13608kg)	90P30KBTASSXXX	381	254	203.2	130.3	292.1	152.4	31	19.1	25	19.1	214.1	40.35
40klb (18144kg)	90P40KBTASSXXX	381	254	203.2	130.3	292.1	152.4	31	19.1	25	19.1	214.1	40.5
50klb (22679kg)	90P50KBTASSXXX	381	254	203.2	130.3	292.1	152.4	31	19.1	25	19.1	214.1	40.6
60klb (27216kg)	90P60KBTASSXXX	381	254	203.2	130.3	292.1	152.4	31	19.1	25	19.1	214.1	40.6
75klb (34020kg)	90P75KBTASSXXX	381	254	203.2	130.3	292.1	152.4	31	19.1	25	19.1	214.1	40.6
100klb (45360kg)	90P100KBTASSXX	457.2	304.8	254	190.5	355.6	228.6	35.1	20.6	31.8	31.8	264	83.5
150klb (68040kg)	90P150KBTASSXX	457.2	304.8	254	190.5	355.6	228.6	35.1	20.6	31.8	31.8	264	85.9
200klb (90720kg)*	90P200KBTASSXX	660.4	304.8	304.8	228.6	508	152.4	47.8	26.9	50.8	50.8	400	199
250klb (113400kg)*	90P250KBTASSXX	660.4	304.8	304.8	228.6	508	152.4	47.8	26.9	50.8	50.8	400	202

NOTE: kg equivalent capacities are to the nearest kg, dimensions are in mm. *Refer specific specifications. Load cell included.

Specifications

Signal Output at Capacity.....	3±0.003 mV/V	Service Load.....	100% Capacity
Linearity Error.....	< 0.020% FSO	Safe Load.....	150% Capacity
.....	< 0.030% FSO*	Side Load restraining capacity.....	10% Capacity
Non-Repeatability.....	< 0.010% FSO	Ultimate Load.....	300% Capacity
Combined Error.....	< 0.020% FSO	Input Resistance.....	700Ω ± 37Ω
.....	< 0.030% FSO*	Output Resistance.....	700Ω ± 7Ω
Hysteresis.....	< 0.020% FSO	Insulation Resistance.....	> 5000 MΩ (@50 VDC)
Creep/(30 mins.).....	< 0.020% FSO	Excitation Voltage(Rec).....	9~12 V AC/DC
.....	< 0.030% FSO*	Excitation Voltage(Max.).....	18 V AC/DC
Zero Balance.....	< 1 % Capacity	Cable (5klb - 20klb).....	4 core 9m, Dia. 5.0 mm
Temperature Effect on Span/(10C).....	< 0.014% FSO	Cable (30klb - 250klb).....	4 core 9m, Dia. 8.0 mm
.....	< 0.02% FSO*	Material.....	Steel
Temperature Effect on Zero/(10C).....	< 0.018% FSO	Operating Temperature Range.....	-35 ~ 65 C
.....	< 0.025% FSO*	Storage Temperature Range.....	-50 ~ 85 C
Uplift restraining capacity	10% Capacity	Sealing.....	IP67
Cable Construction.....	PUR outer	Cable Screen.....	Colourless
Cable Red.....	Excitation +ve	Cable Green.....	Signal +ve
Cable Black.....	Excitation -ve	Cable White.....	Signal -ve

R180514