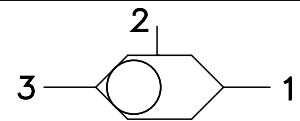


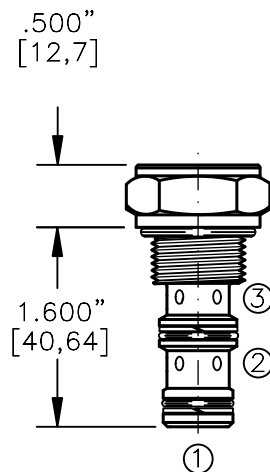
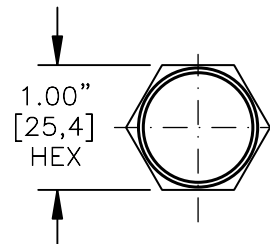
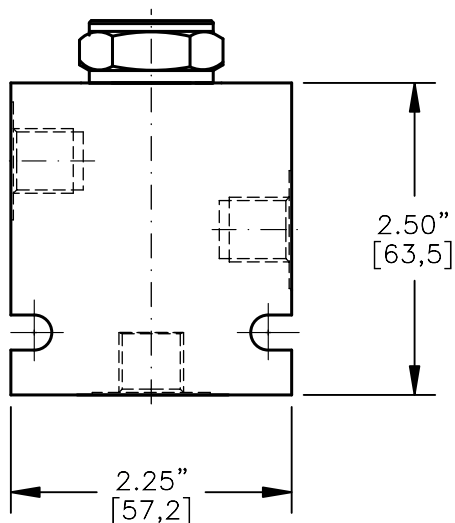
BDSV-08

SHUTTLE VALVE TWO-POSITION, THREE-WAY, BALL TYPE.



TORQUE:

Steel = 35/40 Ft-Lb. [47/54 Nm]
Aluminum = 25/30 Ft-Lb. [34/41 Nm]



FOR ALUMINUM OR STEEL VALVE HOUSING CONFIGURATIONS SEE PAGE 0-031.1

BDSV-08-X-3-X-00

BASIC

SIZE

08 = 3/4"-16 UNF

SEALS

N = BUNA "N"

V = VITON

STYLE

3 = 3 WAY

PORTS

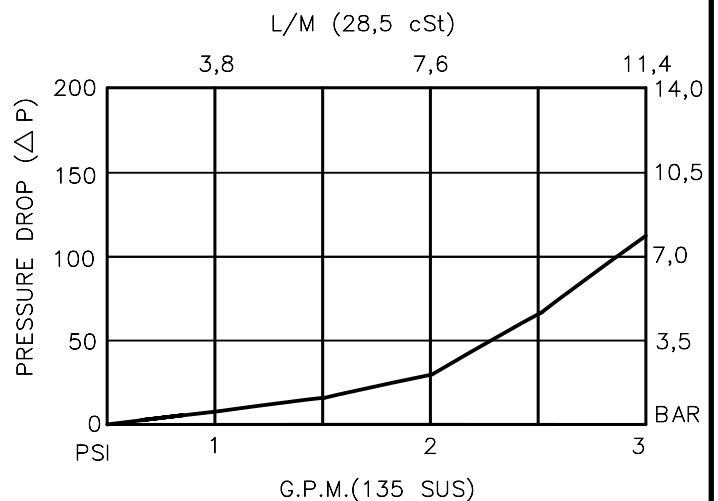
0 = CARTRIDGE ONLY

02BX = G 1/4" BSPP

06TX = SAE - #6

"A" - ALUM. HOUSING

"S" - STEEL HOUSING



SHUTTLE VALVE TWO-POSITION, THREE-WAY, BALL TYPE.

DESCRIPTION

This unit is a SCREW IN, CARTRIDGE TYPE, THREE PORTED, TWO POSITION, HYDRAULIC SHUTTLE VALVE.

OPERATIONS

This valve senses the higher of the two input pressures port #1 or #3 and routes it to the output port #2.

FEATURES AND BENEFITS

A steel ball and a sharp steel seat assures rugged and reliable performance.

All external carbon steel parts are plated for longer life against the elements.

All cartridge valves are 100% functionally tested.

Industry common cavity.

SPECIFICATIONS

OPERATING PRESSURE: 5,000 PSI [350 Bar]

PROOF PRESSURE: 10,000 PSI [700 Bar]

FLOW: 3.0 GPM [12 l/m] nominal. See performance chart.

INTERNAL LEAKAGE: 5 drops/min maximum at 5,000 PSI.

VALVE HOUSINGS: 2500 PSI [175 Bar] = Aluminum – Anodized.

5000 PSI [350 Bar] = Steel – Unplated.

OPERATING TEMPERATURE: -40° to +250° F. [-40° to +120° C.]

OPERATING MEDIA: All general purpose hydraulic fluids such as
MIL-H-5606, SAE-#10, SAE-#20, etc.

INSTALLATION: No restriction.

FILTRATION: 25 microns or better.

SEAL KIT NUMBER: SKN-0831 FOR BUNA "N".

SKV-0831 FOR VITON.

WEIGHT: 0.20 lb [.09 kg] cartridge only.

VALVE CAVITY: #C0830, See Page 0-031.0.