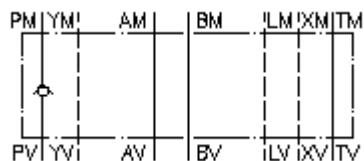


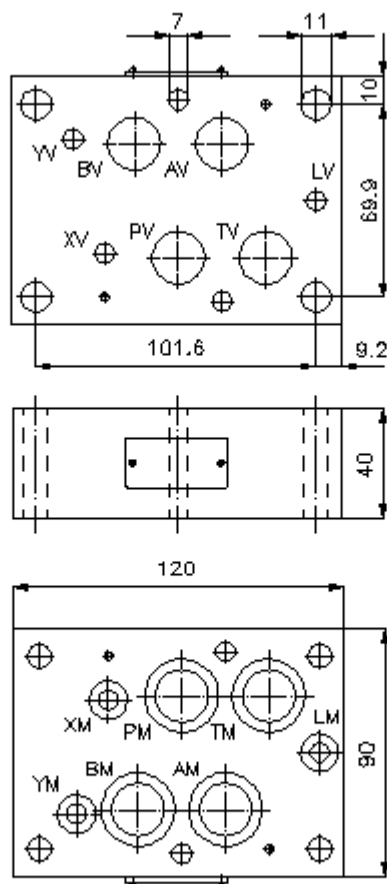
**check valve plate CETOP 7  
(sandwich plate) in P  
RVZ-16S-P**



IMAV-Hydraulik GmbH

**IZ-110-500-00**

(Subject to change!)



**check valve plate CETOP 7  
(sandwich plate) in P  
RVZ-16S-P**



IMAV-Hydraulik GmbH

**Ordering example:**

RVZ   -   16S   -   P  
|            |            |  
**A**        **B**        **C**

**IZ-110-500-00**

(Subject to change!)

**Model code:**

**A design**  
check valve plate  
with mounting interface DIN 24340 form A  
sandwichplate design

**B size and material**  
16S = steel (9SMnPb28K resp. GGG-40)

**C function mode**  
P = check valve in the "P" channel

**Technical Data:**

<b>nominal pressure:</b>	350 bar
<b>nominal flow:</b>	140 l/min
<b>weight:</b>	2.7 kg
<b>crack pressure:</b>	0.2 - 0.3 bar (standard), higher pressure on request
<b>free flow direction:</b>	see symbol
<b>included:</b>	3 pcs. O-Ring 22.22 x 2.62 3 pcs. O-Ring 9.19 x 2.62 2 pcs. O-Ring 25.00 x 2.50