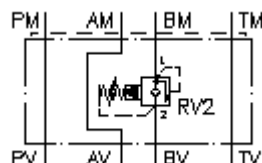
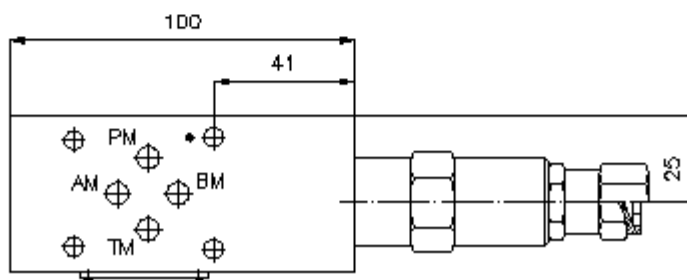
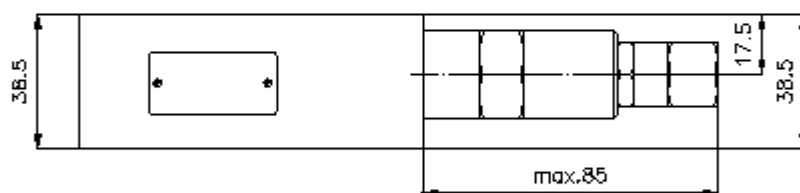
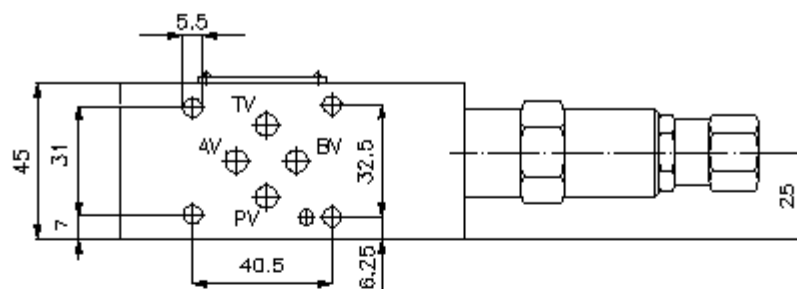


**relief valve CETOP 3
(sandwich plate) in B,pilot operat.
VSZ-06.-B.../..**



IZ-510-201-00

(Subject to change!)



**relief valve CETOP 3
(sandwich plate) in B,pilot operat.
VSZ-06.-B.../..**



Ordering example:

VSZ - 06A - B 02 C / 35
| | | | |
A **B** **C** **D** **E** **F**

IZ-510-201-00

(Subject to change!)

Model code:

- | | |
|---|--|
| <p>A design
backpressure valve
with mounting interface DIN 24340 form A
sandwichplate design</p> <p>B size and material
06A = aluminum (F37)
06S = steel (9SMnPb28K resp. GGG-40)</p> <p>C function mode
B = in B acting</p> | <p>D relief valve
02 = RV2-10.-... (pilot operated) see data
sheet no.: <u>MP-160-101-00</u></p> <p>E adjustment
C = cap</p> <p>F pressure range
03 = 3.5 - 20 bar
20 = 7.0 - 140 bar
35 = 17.0 - 240 bar
50 = 35.0 - 350 bar</p> |
|---|--|

Technical Data:

nominal pressure:	250 bar (A) 350 bar (S)
nominal flow:	60 l/min
weight:	0.7 / 1.3 kg (A/S)
included:	DT-06 = sealing plate with vulcanized O-ring (Viton FPM)