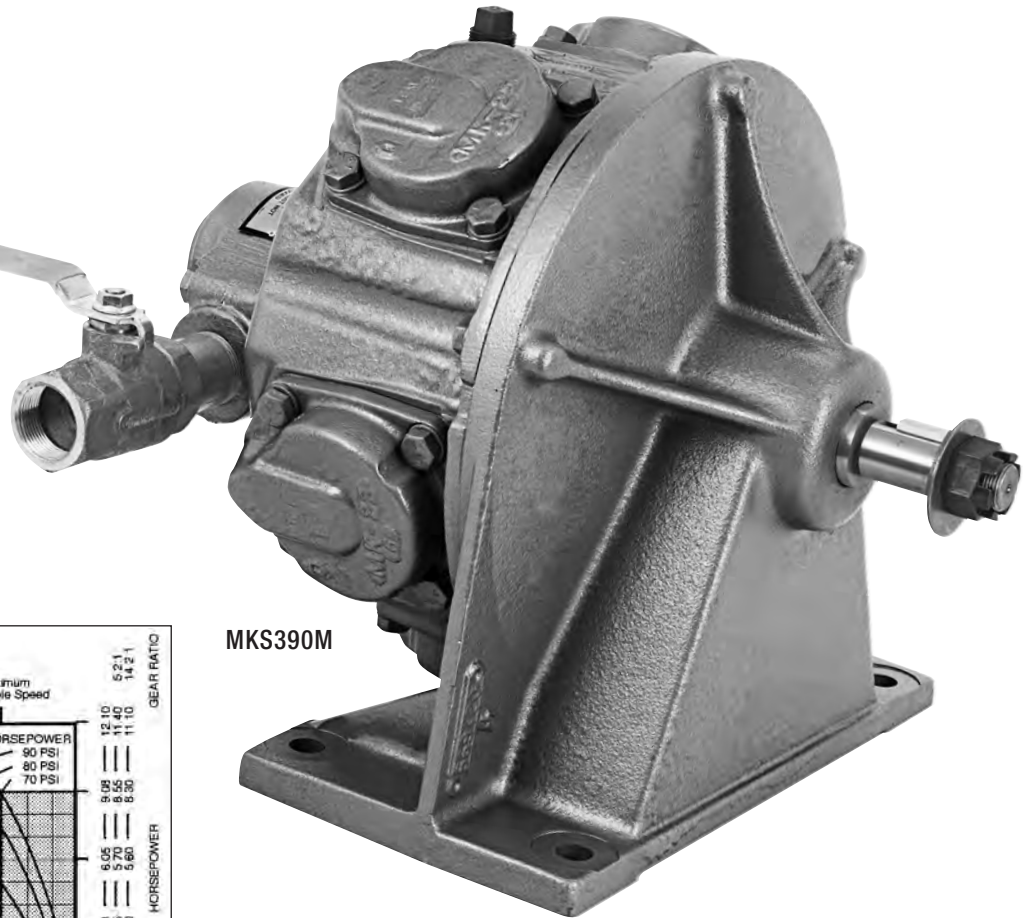


Radial Piston

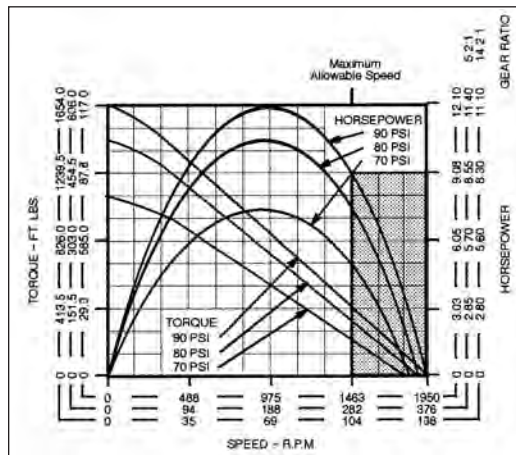
Cleco®

MK SERIES

- Maximum Power
11 hp
8.20 kW
- Torque Range
117 – 1654 ft. lbs.
159 – 2243 Nm



MKS390M



Model Number	RPM**		Stall Torque		Starting Torque		Weight		Air Consumption		Gear Ratio	Max. Overhung Load @ Stall*	
	at Max. hp	Free Speed	ft lbs.	Nm	ft lbs.	Nm	lbs.	kg	cfm	m ³ /min		lbs.	kg
with Single-Direction Valving													
MKS390M	975	1900	117	159	72	98	195	88.5	302	8.55	—	2500	1134
MKS392M	69	135	1654	2243	1021	1384	225	102.1	293	8.30	14.2:1	2800	1270
with Reversible Valving													
MKR391M	975	1900	117	159	72	98	202	91.6	311	8.81	—	2500	1134
MKR395M	183	375	606	822	374	507	230	104.3	299	8.47	5.2:1	2800	1270
MKR393M	67	135	1654	2243	1021	1384	230	104.3	288	8.16	14.2:1	2800	1270
without Valving													
MKW418M	975	1900	117	159	72	98	104	91.6	311	8.81	—	2500	1134
MKW420M	183	375	606	822	374	507	230	104.3	299	8.47	5.2:1	2800	1270
MKW419M	67	135	1654	2243	1021	1384	230	104.3	288	8.16	14.2:1	2800	1270

* All models assume overhung load located at 1" (25.40mm) from face of motor.

**These motors must be operated with sufficient load to prevent speed from exceeding maximum allowable speed shown on performance curve.

General:

Air Inlet: 1-1/4" NPTF

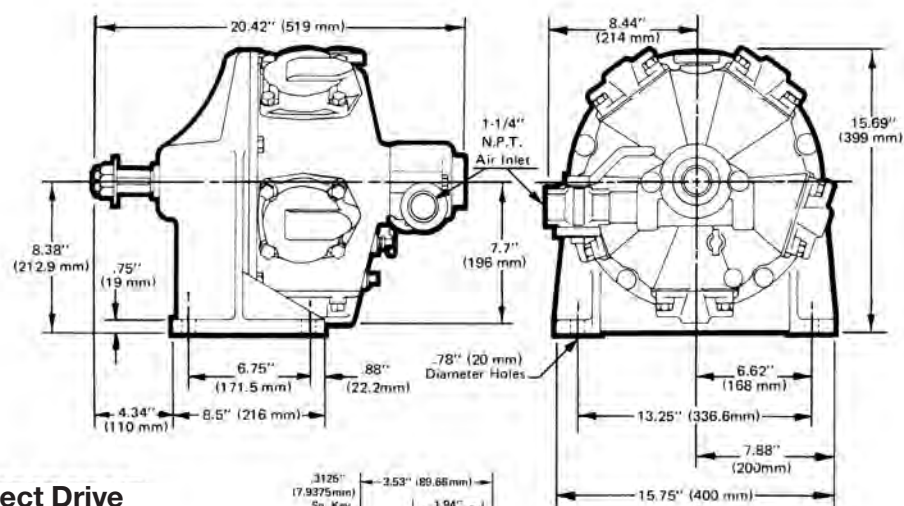
All tools performance rated @ 90psi (620 kPa) air pressure.

Optional Equipment:

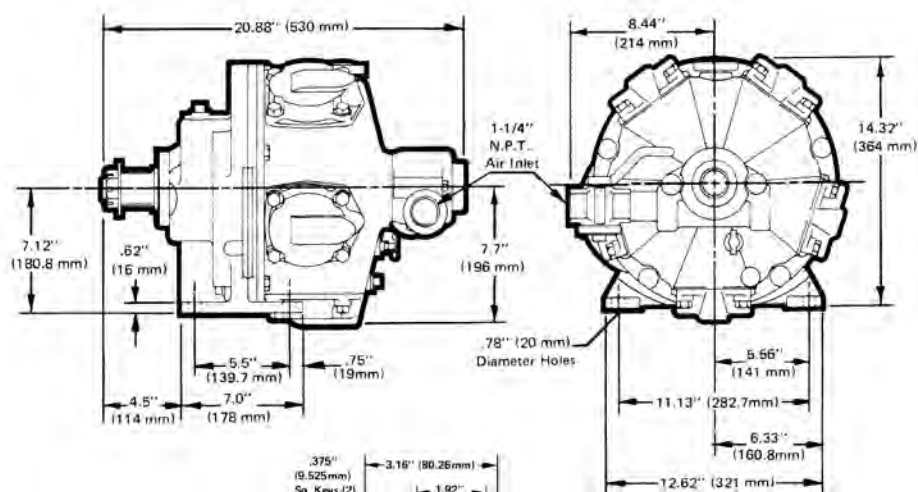
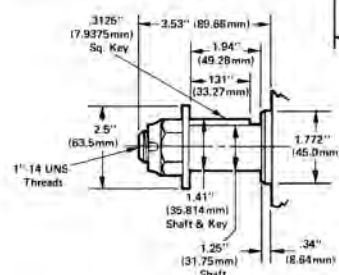
Lubricating Oil – Part 533485 (1 gallon)

Gear Oil – Part 535090 (1 gallon)

MK Series Dimensional Data



Direct Drive
MKS390M
MKW418M



Geared
MKS392M
MKW419M
MKW420M

