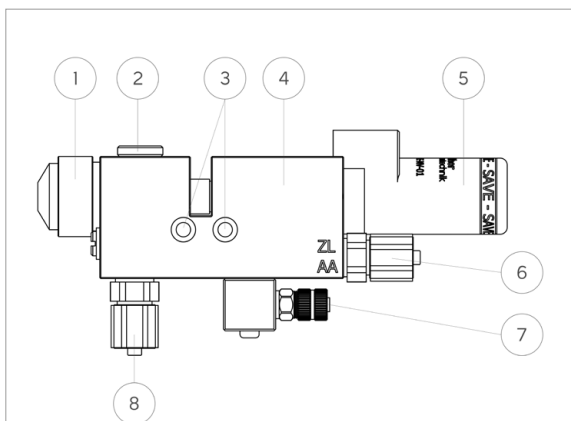
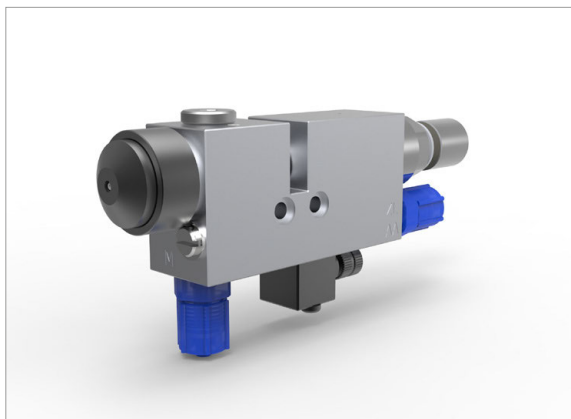


Processing & Application / Spraying / Valve

SMS-20 – SPRAY VALVE SERIES 20



USAGE

The Spray Valves of series 20 provide a solid basis for multiple spray applications. The Spray Valves are suitable for an intermitting as well as a continuing application of different media (e.g. oils, separating agents, paint, greases etc.). The valves are controlled via an external, pneumatic 3/2-way valve. The valve needle is opened by the pressure of the compressed air and closed by spring pressure. A separate atomizer air inlet allows you switch the atomizer air for this series independently, regardless of the status of the compressed air.

CONSTRUCTION

- 1 Nozzle with air cap and retaining ring
- 2 Locking Screw
- 3 Fastening thread
- 4 Basic housing
- 5 Raster-needle sensor with SAVE
- 6 Atomizer air connection
- 7 Control air connection
- 8 Material connection

HIGHLIGHTS

- Different nozzles and air cap combinations for a perfect adaptation to the desired spraying image
- optional sensor available for monitoring the valve needle stroke
- for complex spraying tasks, we offer a variety of adapted nozzle extensions optionally
- optional heating plate available for tempering the valve body
- atomizer air and control air controlled independently

YOUR BENEFITS

- Possibility of realising a process control in connection with a WALTHER LOGIC Limit Value Module
- Valve for automated application of viscous media
- fast, repeatable installation through integrated centering hollows

Processing & Application / Spraying / Valve

SMS-20 – SPRAY VALVE SERIES 20

SPARE PARTS

Item number	Order Code	Designation
5000xxxx	DSV-xx-xx-xx	Nozzle Spray Valve
5000xxxx	VNS-xx-xx-xx-xxxx	Valve needle Spray Valve
5000xxxx	LKS-xx-xx-xx-xxxx	Air cap Spray Valve
50007630		Retaining ring hexagonal
50007629		Retaining ring round
50007205		Valve needle lock with needle stroke sensor
50010422		Valve needle lock
5000xxxx	WST-...	Wearing parts kit for SMS-20 (Standard), VITON

ACCESSORIES

Item number	Order Code	Designation
50008879	PS2-002-G18-A	Pressure sensor 2 [bar]
50008758	PS1-010-G18-A	Pressure sensor 10 [bar]
50008756	PS1-050-G18-A	Pressure sensor 50 [bar]
50008785		G1/8" Mounting system pressure sensor
50007634	HZP-90-25W-01	Heating plate
50007804	HZP-ISO-01	Insulating plate
50007618		Centering sleeve (2x)
50008400	WLG-40-470-SOFT-500	WALTHER LOGIC Limit Value Module incl. software
50008752	WLVC-30-320-SOFT-323	WALTHER LOGIC Valve Control incl. software
50008746	WLVC-10-101-SOFT-101	WALTHER LOGIC Valve Control MINI incl. software
50007662	RKS-01	Cleaning kit for valves
50007773	WZS-03	Tool set for valve maintenance
50010323	SAVE-NV-01	SAVE Valve needle lock
5000xxxx	WST- ...	Connecting screw joint matching the valve

TECHNICAL DATA

Process pressure	max. 50 [bar]
Control air pressure	max. 6 [bar]
Atomizer air pressure	0,5 to 5 [bar]
Process connection (medium)	G1/4" incl. hose screw joint 6/4
Process connection (air)	hose screw joint 6/4
Dimensions l x w x h	125 (129) x 22 x 79,5 [mm]
Weight	0,5 [kg]