



Series REIA

Miniaturized transformers



In general

REIA-transformers can be applied worldwide, meet national and international regulations and are ready for those up-coming. Following designs are available:

Power transformers comp. to VDE 0570 part 2-1, EN 61558-2-1,	(15VA...1kVA), > 1kVA = special transformer
Control transformers comp. to VDE 0570 part 2-2, EN 61558-2-2,	(30VA and up)
Isolation transformers comp. to VDE 0570 part 2-4, EN 61558-2-4,	(sec. 50V up to 500V max.)
Safety transformers comp. to VDE 0570 part 2-6, EN 61558-2-6,	(sum total sec. no-load voltages max. 50V)

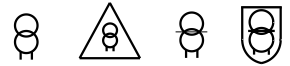
Please state required design in your order.

Particular advantages of series REIA:

- purchaser may select variable voltages
(pri. 110V...600V) and (sec. 6V...600V max. 63A)
- high reliability and long service life
- compact construction and low weight
- low total losses, thus high efficiency
(for example reduction of core losses by two-way layering)
- higher than average output at short-time duty
- high performance in comparison to size
- control transformers feature higher value insulation system than regulation dictates
- high voltage stability because of small voltage drop between no-load and load
- from 130 VA upwards protected against short cut via insulating bushing
- temperature reserves, even at t_a 60°C/B full current load possible
- mounting brackets comp. to DIN 41 307

Single-phase power transformers
Single-phase control transformers
Single-phase isolation transformers
Single-phase safety transformers

comp. to VDE 0570 part 2-1, EN 61558-2-1
 comp. to VDE 0570 part 2-2, EN 61558-2-2
 comp. to VDE 0570 part 2-4, EN 61558-2-4
 comp. to VDE 0570 part 2-6, EN 61558-2-6



REIA 15 – 3000

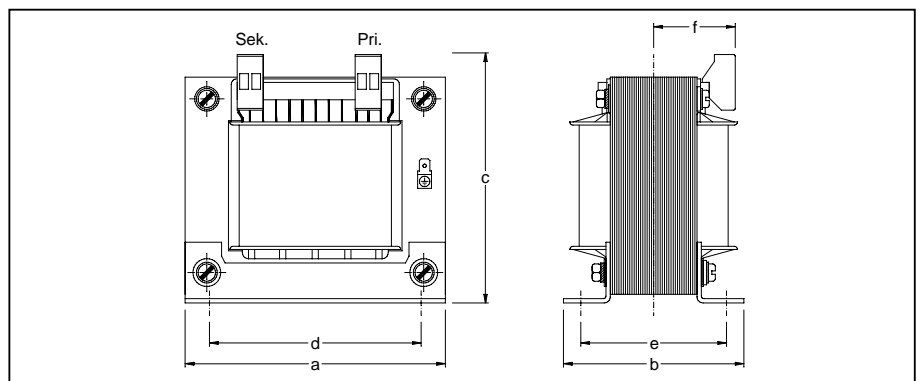
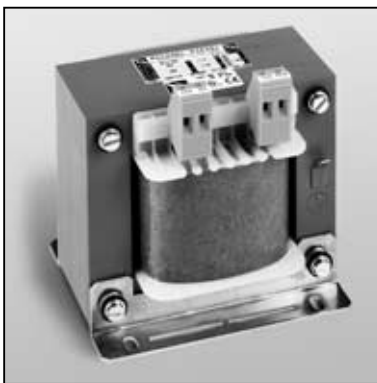
Design: Open frame, stationary, for installation and set-up in dry rooms, separate windings, sturdy mounting brackets. Connection to non-tracking transformer terminals with screw connection. For currents above 20A terminal blocks with screw connections may be used also. In this case dimensions b and c increase. The terminals are protected against finger touch or contact with the back of the hand in compliance with accident prevention regulations (VBG 4).

Standard design for translation up to max. 600 V resp. 20A.

Further designs available on request (voltages, currents, connections, mounting etc.).

Ground connection via tab blade connection 6.3 x 0.8 mm. Accessory ground screw connection terminal available.

IP 00, suitable for installation up to protection rating IP 23 with natural cooling, insulation class E, max. ambient temperature 40°C.



Model	Power	*) Size	Article no.	Copper weight	Total weight	Approx. dimensions in mm						
	VA			app. kg	app. kg	a	b	c	d	e	f	Attachm.
REIA 15	15	EI 54/ 18*	9-001-01	0,07	0,35	55	45	75	44	34	41	M 3
REIA 18	18	EI 60/ 21	9-001-02	0,08	0,45	60	48	80	44	37	43	M 3
REIA 30	30	EI 66/ 23	9-001-03	0,12	0,60	66	53	82	50	41	44	M 4
REIA 40	40	EI 66/ 34	9-001-04	0,15	0,90	66	67	82	50	52	49	M 4
REIA 50	50	EI 78/ 27	9-001-05	0,27	1,20	78	59	90	56	45	45	M 4
REIA 63	63	EI 78/ 36	9-001-06	0,28	1,47	78	69	90	56	54	50	M 4
REIA 75	75	EI 84/ 29	9-001-07	0,29	1,60	85	63	95	64	47	47	M 4
REIA 100	100	EI 84/ 43	9-001-08	0,34	2,10	85	75	95	64	61	53	M 4
REIA 140	140	EI 96/ 35	9-001-09	0,45	2,30	96	77	104	84	61	50	M 5
REIA 145	145	EI 84/ 52	9-001-10	0,52	2,20	85	83	95	64	70	58	M 4
REIA 180	180	EI 105/ 37	9-001-11	0,53	3,00	105	80	111	84	62	51	M 5
REIA 200	200	EI 96/ 45	9-001-12	0,58	2,90	96	87	114	84	70	54	M 5
REIA 250	250	EI 96/ 59	9-001-13	0,66	3,70	96	100	114	84	84	61	M 5
REIA 270	270	EI 105/ 45	9-001-14	0,63	3,50	105	88	111	84	70	55	M 5
REIA 300	300	EI 105/ 55*	9-001-15	0,65	4,00	105	98	103	84	80	60	M 5
REIA 320	320	EI 105/ 60	9-001-16	0,73	4,50	105	101	111	84	85	62	M 5
REIA 330	330	EI 120/ 41	9-001-17	1,00	4,15	120	88	120	90	70	53	M 5
REIA 400	400	EI 120/ 53	9-001-18	1,03	5,20	120	103	120	90	82	58	M 5
REIA 460	460	EI 120/ 61	9-001-19	1,10	6,00	120	110	120	90	90	63	M 5
REIA 500	500	EI 120/ 73	9-001-20	1,10	6,90	120	121	120	90	102	69	M 5
REIA 510	510	EI 135/ 52	9-001-21	1,60	6,45	135	106	133	104	87	58	M 5
REIA 600	600	EI 135/ 62	9-001-22	1,70	7,00	135	116	133	104	97	63	M 5
REIA 630	630	EI 150N/49	9-001-23	1,68	7,80	150	108	147	122	83	57	M 6
REIA 700	700	EI 135/ 72	9-001-24	1,80	7,90	135	123	133	104	107	68	M 5
REIA 800	800	EI 150N/66	9-001-25	2,50	10,00	150	125	147	122	101	65	M 6
REIA 1000	1000	EI 150N/92	9-001-26	2,60	12,80	150	151	147	122	127	78	M 6
REIA 1100	1100	EI 174/ 62	9-001-27	2,80	12,70	174	129	154	135	97	63	M 6
REIA 1300	1300	EI 174/ 72	9-001-28	3,13	14,70	174	139	154	135	105	68	M 6
REIA 1600	1600	EI 174/ 82	9-001-29	3,40	16,70	174	149	154	135	116	73	M 6
REIA 1900	1900	EI 174/102	9-001-30	4,00	21,10	174	169	154	135	136	83	M 6
REIA 2000	2000	EI 192/ 82	9-001-31	4,50	22,50	195	156	175	150	125	73	M 8
REIA 2200	2200	EI 192/ 92*	9-001-32	5,50	23,80	195	166	168	150	134	78	M 8
REIA 2500	2500	EI 192/104	9-001-33	6,00	24,60	195	172	175	150	140	85	M 8
REIA 3000	3000	EI 192/110	9-001-34	6,60	26,90	195	184	175	150	152	87	M 8

Short-term delivery

*) Models without integral attachment bar

Subject to technical modifications