

Pressure measurement

Electronic pressure switch ZDO

Application

- TOX®-Powerpackage

Programmable functions

- LED display unit bar, psi, Pa
- Switching logic PNP
- Maximum value memory
- LED display can be flipped 180°
- LED display off

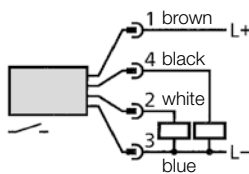
Failure is displayed if:

- System pressure > 10 % of max. nominal pressure
- Short circuit in switch output 1 or switch output 2

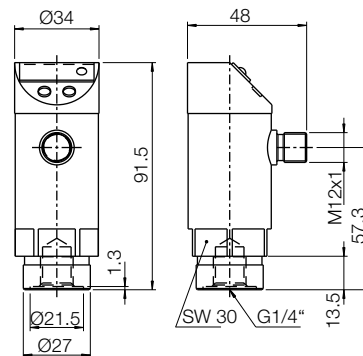
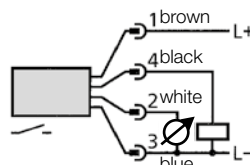


Connection scheme:

ZDO 01



ZDO 01.400A
with analog output



Dimensions in mm

Technical data:

| Type | ZDO 01.010 | ZDO 01.400 | ZDO 01.600 | ZDO 01.400A |
|--------------------------------|---|----------------|----------------|---------------|
| Full Scale (bar): | -1 – 10 | 0 – 400 | 0 – 600 | 0 – 400 |
| Increment (bar): | 0.01 | 1 | 1 | 1 |
| Repetive accuracy: | ± 0,1 % FS* | < ± 0,25 % FS* | < ± 0,25 % FS* | < ± 0,1 % FS* |
| Switch point accuracy: | ± 0,5 % FS* | ± 1,5 % FS* | ± 1,5 % FS* | < ± 0,5 % FS* |
| Display: | LED 7-Segments | | | |
| Delay time: | 0 - 50 s | | | |
| Supply voltage: | 18 – 30VDC | | | |
| Protection class: | IP65 | IP67 | IP67 | IP67 |
| Switching function per output: | hysteresis / normally closed window function / normally closed | | | |
| | hysteresis / normally open window function / normally open | | | |
| | in addition analog output 4 – 20 mA / 0 – 10 V | | | |

* FS = Full Scale

Example for ordering

ZDO 01.400A

- With SP2 as analog output
- Max. pressure 400 bar
- Version 01
- Electronic pressure switch