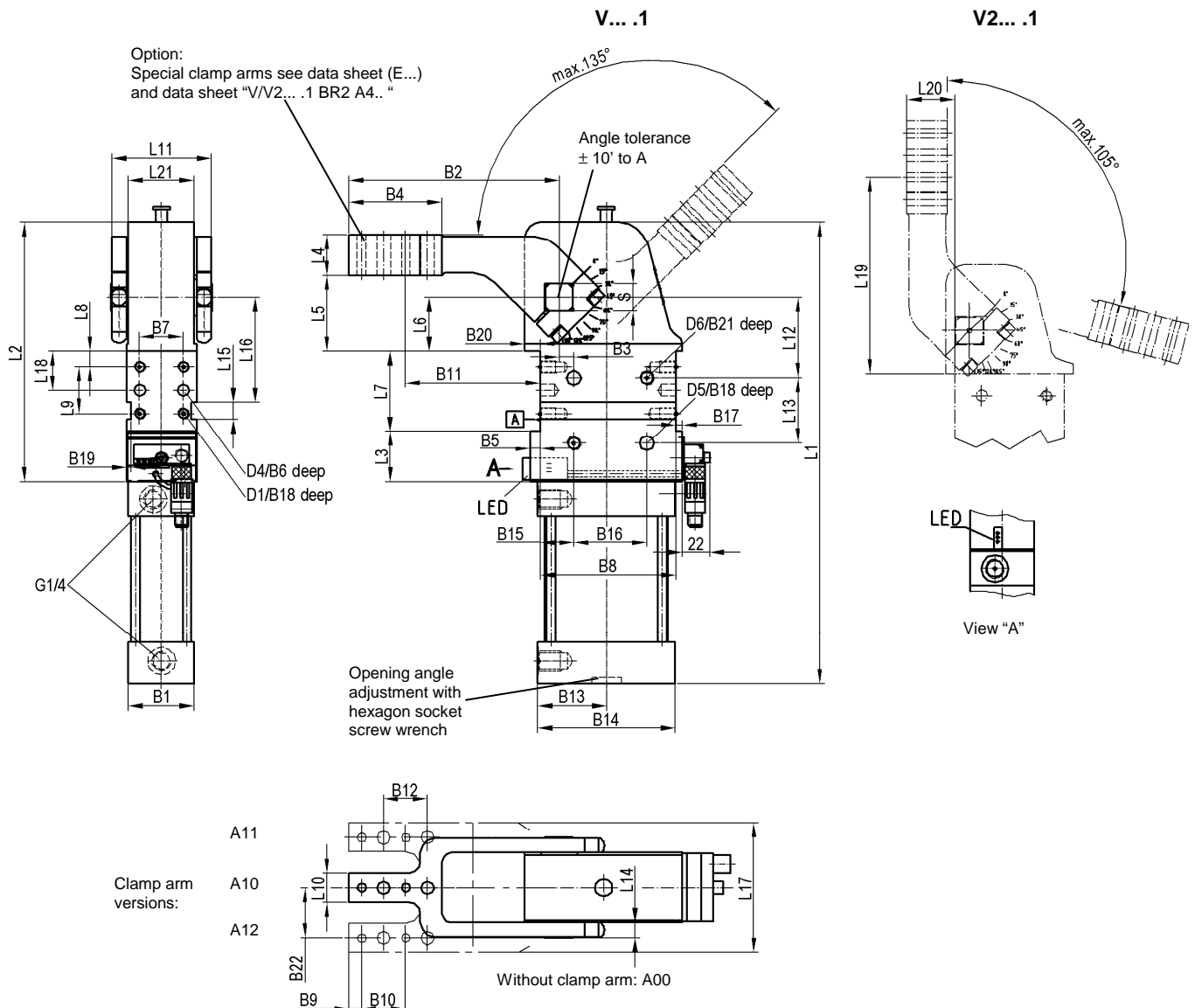


Vario Clamp

With LED operation display on front side,
stepless adjustable opening angle

V/V2 50.1/63.1 BR2 T35

5° – 135°



Ordering example:

V 50.1 BR2 A10 T35

V 50.1 BR2: Type
A10: Clamp arm version
T35: Sensing system

Standard opening angles:

Stepless adjustable in the range of 5° to 135° (Typ e V... .1).

*Tolerance for dowel holes ± 0,02, for threaded holes ± 0,1.

Medium: Air, max. 6 bar, operation permitted with oil-free air.

Ordering example Tünkers sensing system:

... T35: Inductive sensor 24 V, 1 output
with integrated LED's

Type	Holding torque max.	Clamping moment at 5 bar	accord. piston Ø (mm)	Weight** ~ (kg)	B1	B2	B3 ±0,05	B4	B5	B6	B7*	B8*	B9
V/V2 50.1	800 Nm	160 Nm	50	4,3	48	144	10	65	6,5	10	30	93	9
V/V2 63.1	1500 Nm	380 Nm	63	4,8	54	144	10	65	7,5	10	30	93	9

Type	B10 ±0,02	B11 ±0,1	B12 ±0,2	B13	B14	B15 ±0,1	B16*	B17	B18	B19	B20	B21	B22 ±0,1	D1	D2 H7	D3	D4 H7	D5 H7	D6	L1	L2	L3
V/V2 50.1	30	92	30	47	94	23	50	4,5	11	3,5	9,5	12	34	M8	6	9	8	10	M10	321	178	35
V/V2 63.1	30	92	30	54	106	23	50	7,5	11	3,5	12,5	12	37	M8	6	9	8	10	M10	335	185	35

Type	L4 ±0,1	L5 ±0,2	L6 ±0,05	L7 ±0,1	L8 ±0,1	L9 ±0,1	L10	L11	L12 ±0,05	L13*	L14 ±0,1	L15 N9	L16 ±0,05	L17	L18 ±0,05	L19 ±0,1	L20 ±0,2	L21	S h9
V/V2 50.1	28	51,5	36,5	55	11	32	20	68	55	45	10	12	71,5	78	27	141,5	30	45	19
V/V2 63.1	28	51,5	36,5	55	11	32	20	78	55	45	10	12	71,5	86	27	141,5	30	52	22

