

## COMPACT & POWERFUL RING, FOR CONFINED ENVIRONMENTS

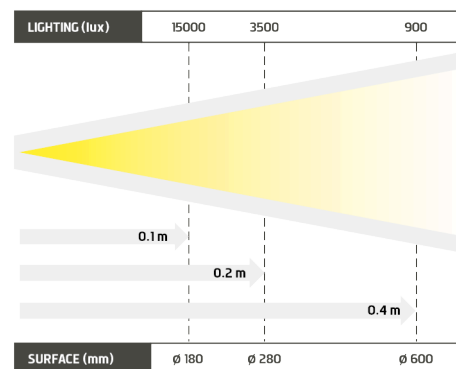


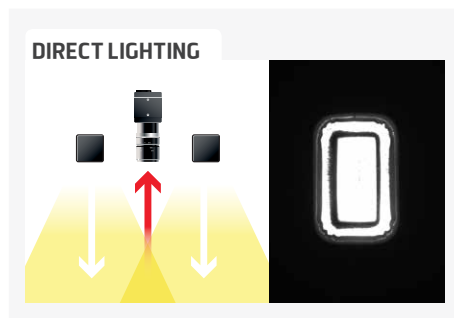
- ✓ 9 high powerful leds,
- ✓ current regulation on cable,
- ✓ continuous and strobe modes.

Equipped with 9 high powerful leds, the TRING is a miniature ring specially designed for the diffuse lighting of circular areas. It has a current control power supply that regulates the current intensity and consequently guarantees the lighting stability. Thanks to its M12 connector, it can be easily connected to any kind of production lines. Either in continuous or in strobe mode, the TRING perfectly goes along with a camera dedicated to quality control tasks: code reading, presence/absence checking, surface control...

Distance	0.1m		0.2m		0.4m	
TRING	15000 lux	ø 180 mm	3500 lux	ø 280 mm	900 lux	ø 600mm

Minimum guaranteed values (white lighting measures)





## TECHNICAL SPECIFICATIONS

Electronics	
Power supply	24 VDC $\pm 10\%$
Functioning mode	Continuous or strobe according to wiring
Maximum rising time	1.5 ms
Maximum falling time	1 ms
Wiring	M12 4 poles male connector
Max. consumption	6 W
Optics	
Colour	White, Red, Green, Blue, Infrared
Number of Leds	9
Lens by default	No lenses
Mechanics	
Dimensions	$\varnothing$ Int : 38 mm - $\varnothing$ Ext : 66 mm
Width	15 mm
Weight	70 g
Materials	Black anodized aluminum
Diffuser	Satin diffuser
Fixing	2 M3 screws
Environment	
Operating temperature	0 - 40°C
Storage temperature	0 - 60°C
IP protection	IP 40
Labels	RoHS-CE-WEEE

## HOW TO BUILD YOUR REFERENCE

REQUIRED SETTINGS

OPTION

TRING

COLOUR

DIFFUSER OPTION

WHI

630

525

470

850

DS

DO

DT

POL

SATIN

OPAQUE

TRANSPARENT<sup>1</sup>

POLARISER<sup>2</sup>

1 : NO DIFFUSION

2 : EXCEPT FOR INFRAROUGE 850

EXAMPLES :

RESULTS :

TRING RED LED SATIN DIFFUSER :

TRING WHITE LED OPAQUE DIFFUSER :

→


→

TRING-630-DS

TRING-WHI-DO

ACCESSOIRES

M12 female – 4 pins cable



2 meters	Ref: C-M12-4P-2M
5 meters	Ref: C-M12-4P-5M
10 meters	Ref: C-M12-4P-10M

Diffusers & Polariser



Opaque diffuser	Ref: DO-TRING-TINYZ
Satin diffuser	Ref: DS-TRING-TINYZ
Transparent diffuser	Ref: DT-TRING-TINYZ
Polariser for satin diffuser	Ref: POL-DS-TRING
Polariser for transparent diffuser	Ref: POL-DT-TRING

Safety glasses



Ref: EYE-PROTECT

MOUNTING DEVICES

SRMOUNT V1



Ref: SRMOUNT V1

SRMOUNT V2



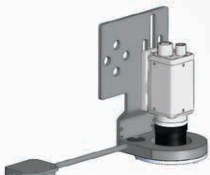
Ref: SRMOUNT V2

SRMOUNT V3



Ref: SRMOUNT V3

SRMOUNT V4



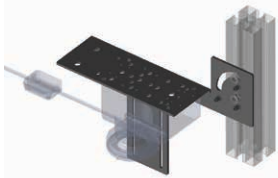
Ref: SRMOUNT V4

SRMOUNT V5



Ref: SRMOUNT V5

TPL-MOUNT-TRING-H1



Ref: TPL-MOUNT-TRING-H1

TPL-MOUNT-TRING-V1



Ref: TPL-MOUNT-TRING-V1

