



Solenoid valve 2/2 way N.C. With pilot control

21WA3K0B130

÷

21WA4K0B130

PRESENTATION:

S.V. with pilot control for interception of fluids compatible with the construction materials.

A minimum operational pressure of 0,2 bar is required.

The materials used and the tests carried out ensure maximum reliability and duration.

USE: Automation
Heating

PIPES: G 3/8 - G 1/2

COILS: 8W - Ø 13
BDA - BDS - BSA 155°C (class F)
BDF - BDV 180°C (class H)

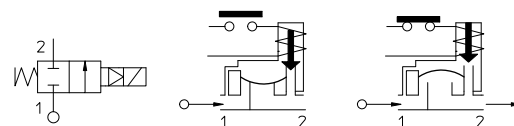
MOULDING AND BOBBIN ARE MADE BY 100% VIRGIN MATERIAL.

Max. allowable pressure (PS) 20 bar
Ambient temperature:
with coil class **F** - 10°C + 60°C
with coil class **H** - 10°C + 80°C



Gaskets	Temperature		Medium
B =NBR (nitrile rubber)	- 10°C	+ 90°C	Air, inert gas, water
E =EPDM (ethylene-propylene)	- 10°C	+140°C	Water, low pressure steam
V =FKM (fluoroelastomer)	- 10°C	+140°C	Mineral oils (2°E), gasoline gas oil

For seals other than NBR replace the letter "**B**" with the ones corresponding to the other seals. E.I. 21WA3K0**V**130.



Pipe ISO 228/1	Code	Max viscosity		Ø mm	Kv l/mn	Power (watt)	Pressure		
		cSt	°E				min bar	M.O.P.D.	
G 3/8	21WA3K0B130	12	~ 2	13	60	8	0,2	16	16
G 1/2	21WA4K0B130				70				

MATERIALS:

Body

Brass - UNI EN 12165 CW617N

Armature tube

Stainless steel AISI series 300

Fixed core

Stainless steel AISI series 400

Plunger

Stainless steel AISI series 400

Phase displacement ring

Copper - Cu 99,9%

Spring

Stainless steel AISI series 300

Seal

Standard: B=NBR

On request: V=FKM

Brass - UNI EN 12165 CW617N

Orifice

On request:

Connector

Pg 9 or Pg 11

Connector conformity

ISO 4400

FEATURES:

Electrical conformity

IEC 335

Protection degree

IP 65 EN 60529 (DIN 40050)
with coil fitted by connector.

SPARE PARTS:

1. Coil:

See coils list

KIT:

KT130KB30-A= **2+3**

2. Complete plunger:

Code R450886/**B**

MAINTENANCE KIT:

KTGWA3K0B13= **2+4+5**

3. Complete armature tube:

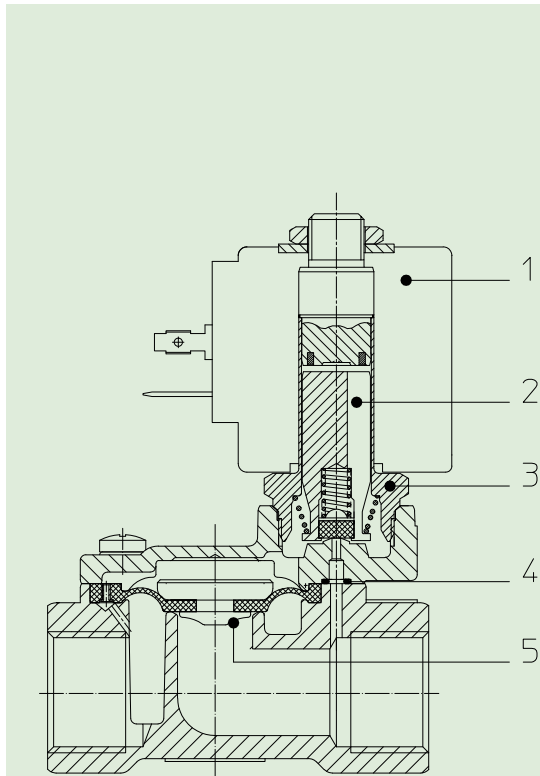
Code R450606

4. Gasket O-Ring:

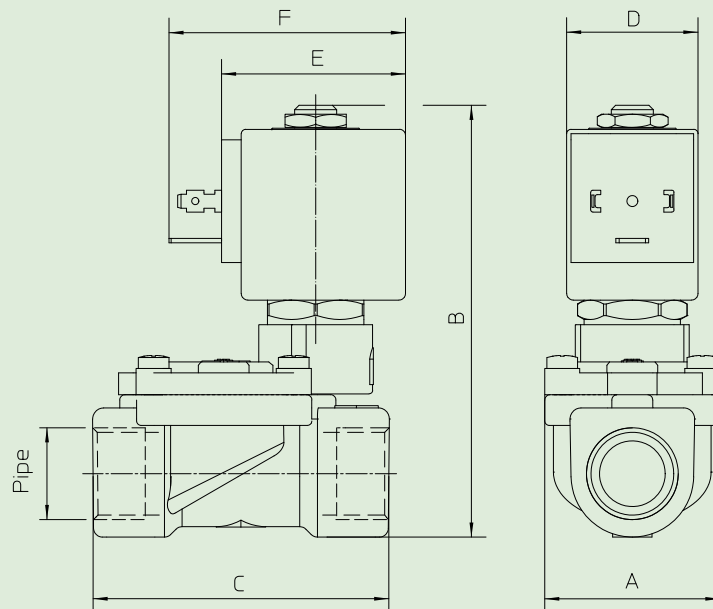
Code R990300/**B**

5. Complete diaphragm:

Code R452186/**B**



DIMENSIONS:



Type	Pipe ISO 228/1	A mm	B mm	C mm
21WA3K0B130	G 3/8	40	97	60
21WA4K0B130	G 1/2			66

COIL TYPE	POWER ABSORPTION			DIMENSIONS		
	W ==	Hold VA ~	Inrush VA ~	D mm	E mm	F mm
B	8	14,5	25	30	42	54