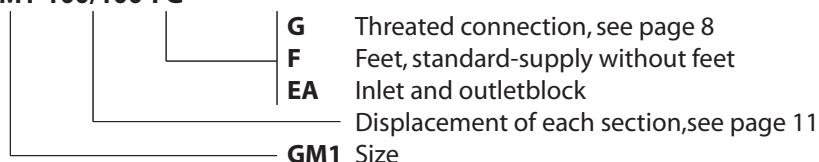


Radial piston flow divider MT-GM

Type		Displacement per section	Flow per section		Pressure		Max power per section
			continuous	maximum	continuous	intermittend	
		cm ³ /rev	l/min	l/min	bar	bar	kW
MT-GM1	100/100	99	35	50	240	300	24
MT-GM1	175/175	172	70	100	240	300	30
MT-GM2	350/350	347	120	175	240	300	45
MT-GM2	500/500	493	145	210	240	300	45
MT-GM3	800/800	792	235	280	240	300	60
MT-GM5	1800/1800	1816	340	430	240	300	90
MT-GM6	3000/3000	3041	430	550	240	300	120

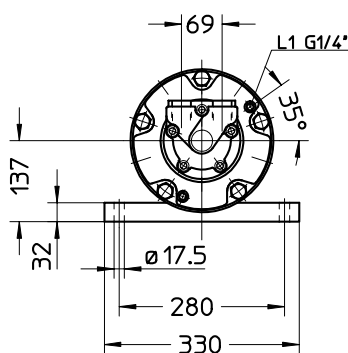
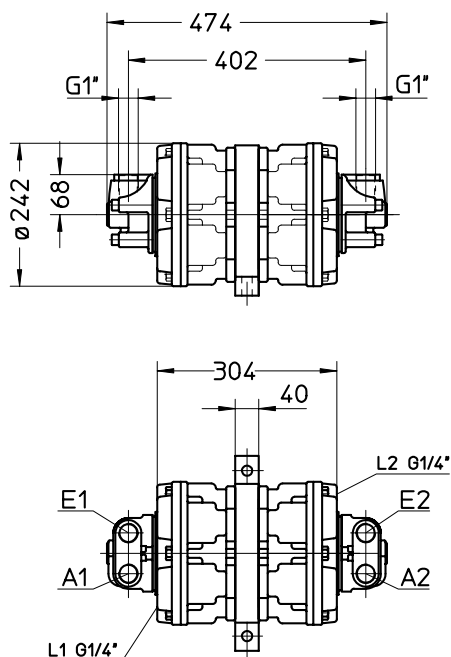
Complete drawings of the assembled units of different sizes to be used as pressure-multipliers or flow-dividers are available upon request.

Order Codes Example: MT-GM1-100/100-FG



MT-GM1... / ...-FG

Weight: 70 kg



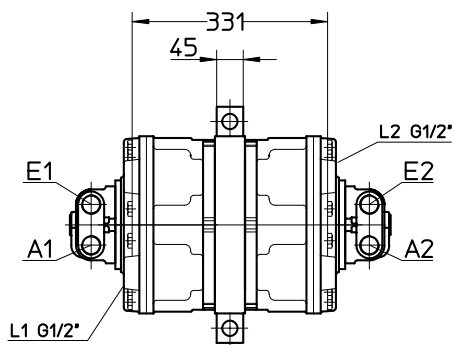
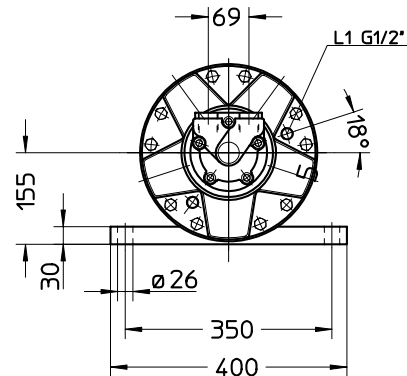
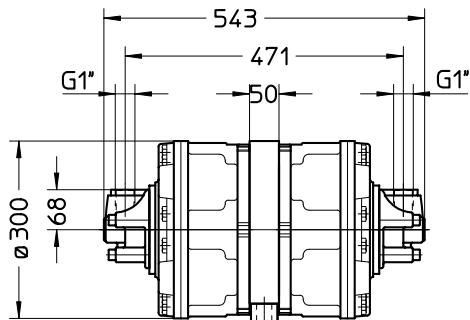
Connections

- E1 - E2 **G1"** Input, to be connected together
 - A1 - A2 **G1"** Output, section-flows
 - L1 - L2 **G1/4"** Drain-ports, drain pressure max. 2 bar
- Important:** both ports have to be connected to the tank !

Radial piston flow divider MT-GM

MT-GM2... / ...FG

Weight: 130 kg



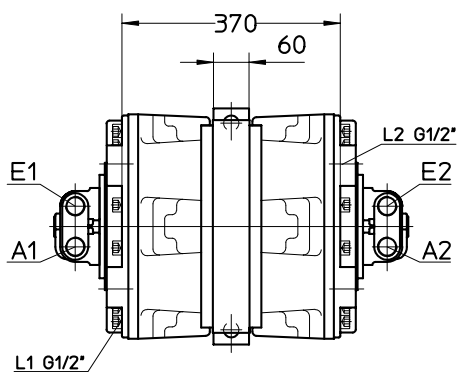
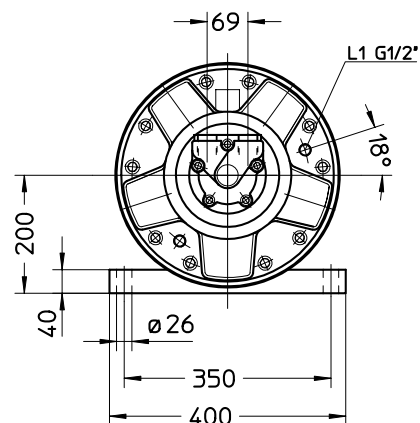
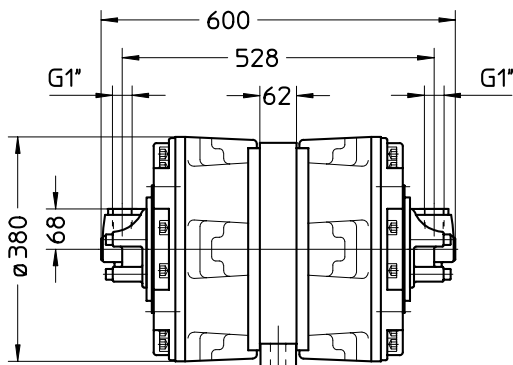
Connections

- E1 - E2 **G1"** Input, to be connected together
- A1 - A2 **G1"** Output, section-flows
- L1 - L2 **G1/2"** Drain-ports, drain pressure max. 2 bar

Important: both ports have to be connected to the tank !

MT-GM3... / ...FG

Weight: 215 kg



Connections

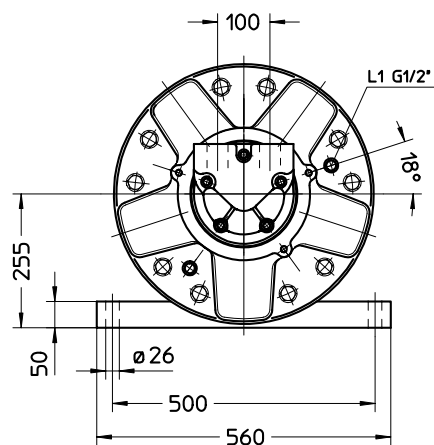
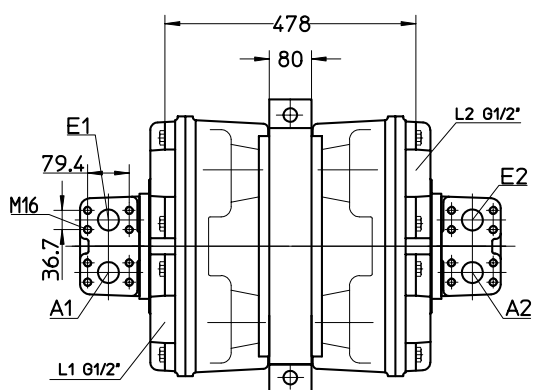
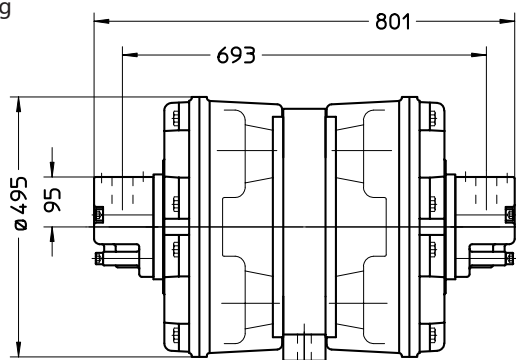
- E1 - E2 **G1"** Input, to be connected together
- A1 - A2 **G1"** Output, section-flows
- L1 - L2 **G1/2"** Drain-ports, drain pressure max. 2 bar

Important: both ports have to be connected to the tank !

Radial piston flow divider MT-GM

MT-GM5... / ...FS

Weight: 425 kg



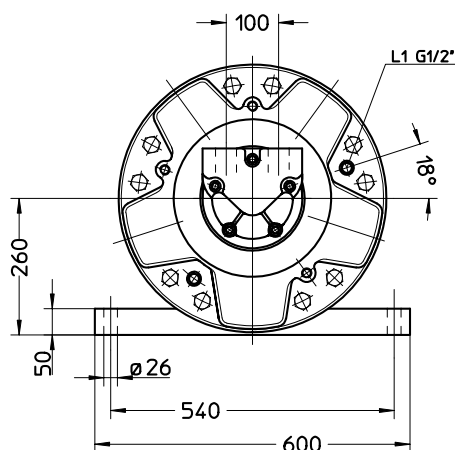
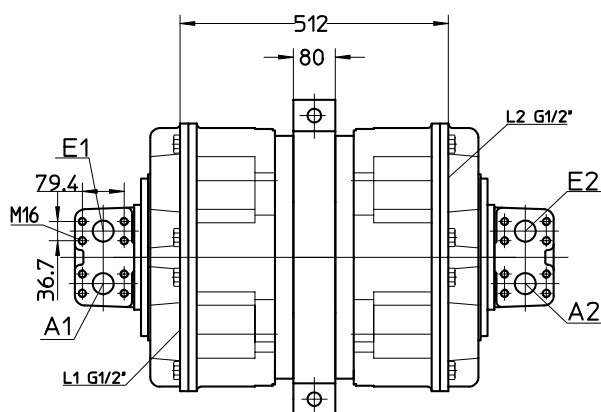
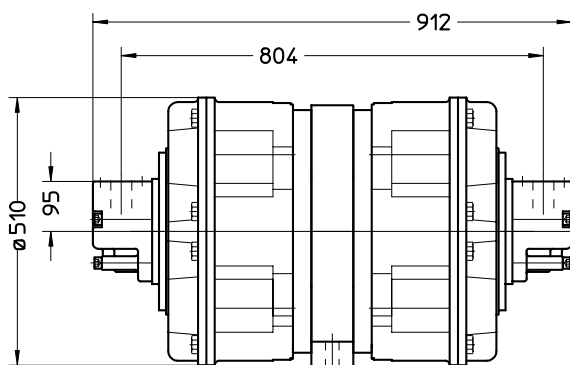
Connections

- E1 - E2 **SAE 1 1/2"** Input, to be connected together
- A1 - A2 **SAE 1 1/2"** Output, section-flows
- L1 - L2 **G1/2"** Drain-ports

Important: both ports have to be connected to the tank !

MT-GM6... / ...FS

Weight: 550 kg



Connection

- E1 - E2 **SAE 1 1/2"** Input, to be connected together
- A1 - A2 **SAE 1 1/2"** Output, section-flows
- L1 - L2 **G1/2"** Drain-ports, drain pressure max. 2 bar

Important: both ports have to be connected to the tank !