

# Technical Data

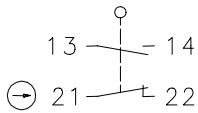
## Rope pull switch

### Series SEM2

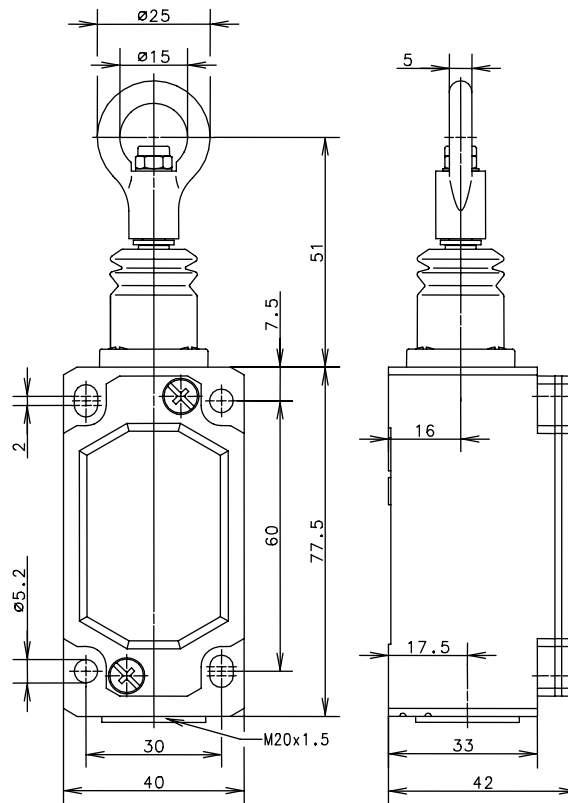
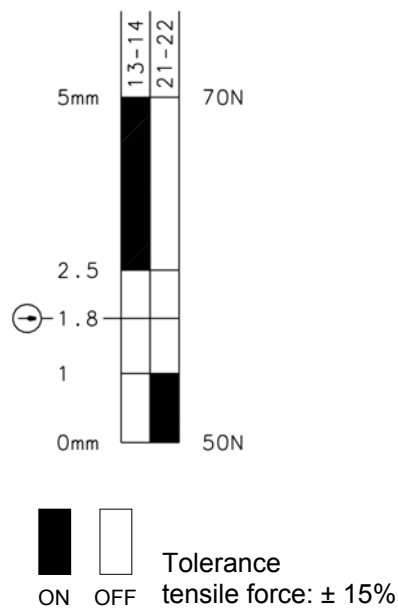
Description **SEM2-U1Z**

Article number **6012811029**


Operating symbol



Operating diagram



### Electrical data

|                                 |   |                                   |
|---------------------------------|---|-----------------------------------|
| Rated insulation voltage        | $U_i$   | 400 VAC                           |
| Conv. thermal current           | $I_{the}$   | 10 A                              |
| Rated operational voltage       | $U_e$   | 240 V                             |
| Utilization category            |   | AC-15, $U_e/I_e$ 240 V / 3 A      |
| Direct opening action           |  | acc. to IEC/EN 60947-5-1, Annex K |
| Short-circuit protective device |   | Fuse 10 A gL/gG                   |
| Protection class                |   | I                                 |

This document will not become the contractual basis; the details included herein do not constitute any descriptions of expected conditions, so that warranties/claims for defects on account of possible variations of the actual qualities from the qualities described herein are explicitly excluded. All rights reserved. Specifications subject to change without notice!

Date of issue: 09.11.2010 / Page 1 of 2  
Document: 6012811029\_en.doc / Last update: 2 / 2783-10

# Technical Data

## Rope pull switch



### Mechanical data

|  |  |
|--|--|
| Enclosure                                    | Al-die cast  |
| Cover  | Al-plate   |
| Actuator                                     | Pull ring (Zn-die cast)  |
| Ambient air temperature                      | -30 °C ... +80 °C  |
| Contact type (not pretensioned installation) | 1 NC, 1 NO (Zb)  |
| Mechanical life                              | 1 x 10 <sup>6</sup> operating cycles   |
| Switching frequency                          | ≤ 50 / min.  |
| Assembly                                     | 4 x M5   |
| Connection                                   | 4 screw terminals (M3,5)   |
| Conductor cross-sections                     | Solid: 0,5 ... 1,5 mm <sup>2</sup><br>Litz wire with ferrules: 0,5 ... 1,5 mm <sup>2</sup> |
| Cable entrance                               | 1 x M20x1.5  |
| Weight                                       | ≈ 0,22 kg  |
| Installation position                        | Operator definable   |
| Protection type                              | IP65 acc. to IEC/EN 60529  |

### Standards

VDE 0660 T100, DIN EN 60947-1, IEC 60947-1  
VDE 0660 T200, DIN EN 60947-5-1, IEC 60947-5-1

### EU Conformity



### Approvals

cCSA<sub>US</sub> A300 (same polarity)

### Notes

The degree of protection (IP code) specified applies solely to a properly closed cover and the use of an equivalent cable gland with adequate cable.

This document will not become the contractual basis; the details included herein do not constitute any descriptions of expected conditions, so that warranties/claims for defects on account of possible variations of the actual qualities from the qualities described herein are explicitly excluded. All rights reserved. Specifications subject to change without notice!

Date of issue: 09.11.2010 / Page 2 of 2  
Document: 6012811029\_en.doc / Last update: 2 / 2783-10

Bernstein AG, Tieloser Weg 6, D-32457 Porta Westfalica, Germany

Vorlage : 0850174284 Orig. 2