

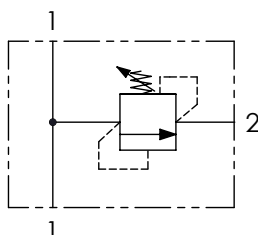
VMDR90

VALVOLE DI MASSIMA PRESSIONE DIRETTA IN LINEA DIRECT ACTING PRESSURE RELIEF VALVES

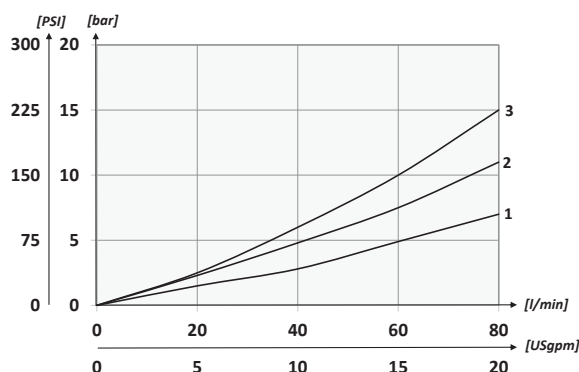
Oleoweb
VALVES & SOLUTIONS



SCHEMA IDRAULICO / HYDRAULIC CIRCUIT



PERFORMANCES



DATI TECNICI / TECHNICAL DATA

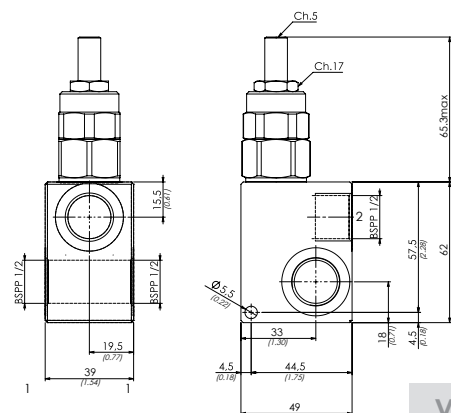
Olio idraulico - Mineral oil	ISO 6743/4 (DIN 51524)
Viscosità olio - Oil viscosity	15-250 mm ² /s (15 to 250 cSt)
Classe di contaminazione max Max contamination index	ISO 4406:1999 Classe 19/17/14
Temperatura dell'olio - Oil temperature	-20°C +80°C -4°F +176°F
Temperatura ambiente - Environment temperature	-20°C +50°C -4°F +122°F
È indispensabile l'utilizzo di un filtro per proteggere la valvola (filtrazione consigliata 15 µm) It is necessary a filter use to protect the valve (advised filtration 15 µm)	

CARATTERISTICHE TECNICHE / TECHNICAL CHARACTERISTICS

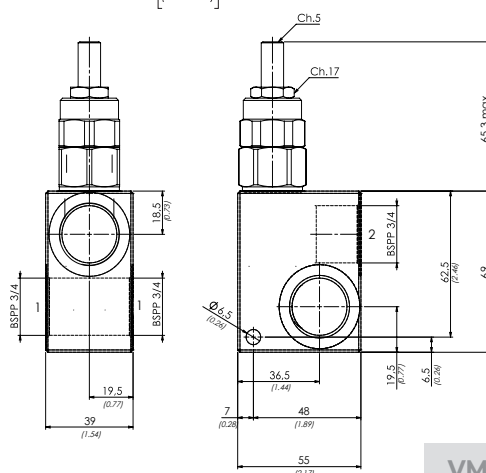
TIPO TYPE	PORTATA MAX (l/min) MAX FLOW (USgpm)	PRESSIONE MAX (bar) MAX PRESSURE (PSI)	PESO APPROX (kg) APPROX WEIGHT (lbt)
VMDR90120	80 (21.1)	350 (5075)	0,65 (1.43)
VMDR90340			1 (2.2)

CODICE ORDINAZIONE ORDERING CODE	01	02	03	04
VMDR90				

01	VALVOLE DI MASSIMA PRESSIONE DIRETTA IN LINEA (DIRECT ACTING PRESSURE RELIEF VALVES)		VMDR90
02	DIMENSIONE (SIZE)	BSPP 1/2	120
		BSPP 3/4	340
03	REGOLAZIONE (SETTING)	Chiave (Screw)	C
		Volantino (Handknob) Tipo (Type) 81300023	V
04	MOLLA (SPRING) 10/100 bar (145/1450 PSI)	26 bar/al giro (377 PSI/turn)	1
	MOLLA (SPRING) 20/250 bar (290/3625 PSI)	41 bar/al giro (595 PSI/turn)	2
	MOLLA (SPRING) 50/350 bar (725/5075 PSI)	91 bar/al giro (1320 PSI/turn)	3



VMDR90120



VMDR90340