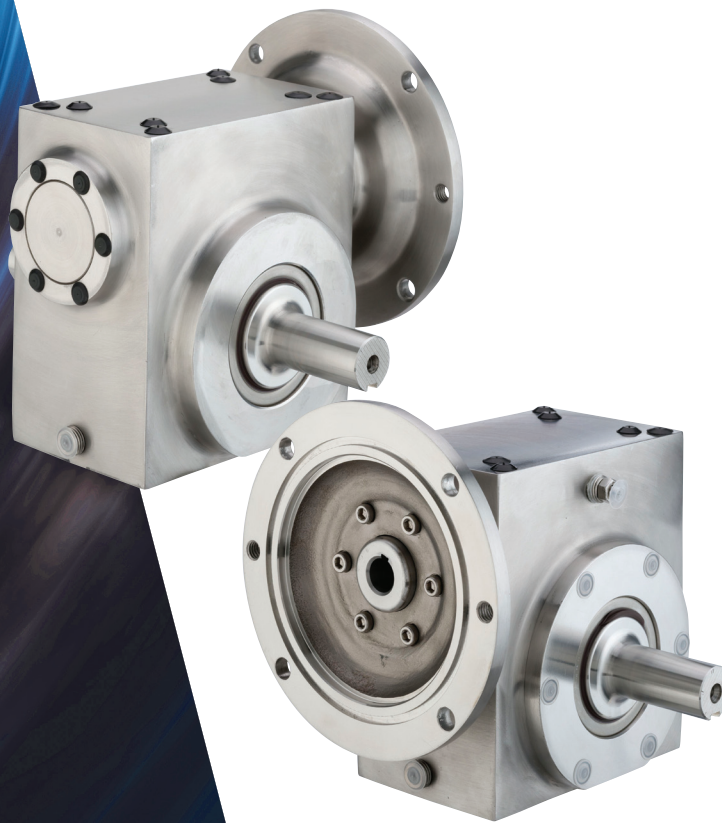


GROVE GEAR

Stainless Steel Worm Gear Reducers






A Regal Brand

REGAL

Stainless Steel
Maximum Rating Tables

Size 15

15 Series

							Style SBMQ			Style SHMQ	Style SHMQ
											
Ratio	Input RPM	Output RPM	Input HP	Output HP	Output Torque (lb-in)	NEMA C Input Frame	L Assembly Catalog No.	R Assembly Catalog No.	D Assembly Catalog No.	H1 Assembly Catalog No.*	H2 Assembly Catalog No.*
5	2500	500.0	2.310	2.151	271	56C	S153003700	S153004900	S153006100	S153045710	S153046910
	1750	350.0	1.939	1.794	323						
	1170	234.0	1.537	1.408	379						
7.5	100	20.0	0.235	0.167	526	143-5TC	S153007300	S153008500	S153009700	S153048110	S153049310
	2500	333.3	1.785	1.619	306						
	1750	233.3	1.522	1.368	370						
	1170	156.0	1.205	1.068	431						
10	100	13.3	0.196	0.125	591	56C	S153007400	S153008600	S153009800	S153048210	S153049410
	2500	250.0	1.500	1.324	334						
	1750	175.0	1.279	1.116	402						
	1170	117.0	1.014	0.869	468						
15	100	10.0	0.176	0.101	639	143-5TC	S153007500	S153008700	S153009900	S153048310	S153049510
	2500	166.7	1.174	0.982	371						
	1750	116.7	1.003	0.826	446						
	1170	78.0	0.800	0.643	519						
20	100	6.7	0.155	0.075	706	56C	S153004000	S153005200	S153006400	S153046010	S153047210
	2500	125.0	1.077	0.860	434						
	1750	87.5	0.919	0.719	518						
	1170	58.5	0.734	0.557	600						
25	100	5.0	0.155	0.064	807	143-5TC	S153007700	S153008900	S153010100	S153048510	S153049710
	2500	100.0	0.881	0.670	422						
	1750	70.0	0.752	0.559	503						
	1170	46.8	0.602	0.431	580						
30	100	4.0	0.137	0.049	775	56C	S153007800	S153009000	S153010200	S153048610	S153049810
	2500	83.3	0.729	0.526	398						
	1750	58.3	0.630	0.442	478						
	1170	39.0	0.510	0.344	555						
40	100	3.3	0.124	0.040	754	143-5TC	S153007900	S153009100	S153010300	S153048710	S153049910
	2500	62.5	0.649	0.432	435						
	1750	43.8	0.560	0.361	520						
	1170	29.3	0.456	0.279	601						
50	100	2.5	0.122	0.032	808	56C	S153008000	S153009200	S153010400	S153048810	S153050010
	2500	50.0	0.536	0.329	415						
	1750	35.0	0.464	0.274	494						
	1170	23.4	0.379	0.211	569						
60	100	2.0	0.110	0.024	760	143-5TC	S153008100	S153009300	S153010500	S153048910	S153050110
	2500	41.7	0.451	0.257	389						
	1750	29.2	0.391	0.214	462						
	1170	19.5	0.321	0.165	532						
80	100	1.7	0.099	0.019	707	56C	S153008200	S153009400	S153010600	S153049010	S153050210
	2500	31.3	0.219	0.109	220						
	1750	21.9	0.204	0.093	269						
	1170	14.6	0.176	0.073	314						
100	100	1.3	0.032	0.008	418	143-5TC	S153008300	S153009500	S153010700	S153049110	S153050310
	2500	25.0	0.155	0.069	175						
	1750	17.5	0.145	0.059	213						
	1170	11.7	0.126	0.046	248						
100	100	1.0	0.024	0.005	328	56C	S153008400	S153009600	S153010800	S153049210	S153050410
	100	1.0	0.024	0.005	328						

Consult Factory for other available styles and motor flanges.

* Catalog numbers are for hollow output shaft reducers.

When ordering, substitute the XX suffix with the required output bore code.

Hollow Shaft Bore Sizes	
Fraction Size	5/8"
Decimal Size	0.625"
Output Bore Code	10

Dimensions

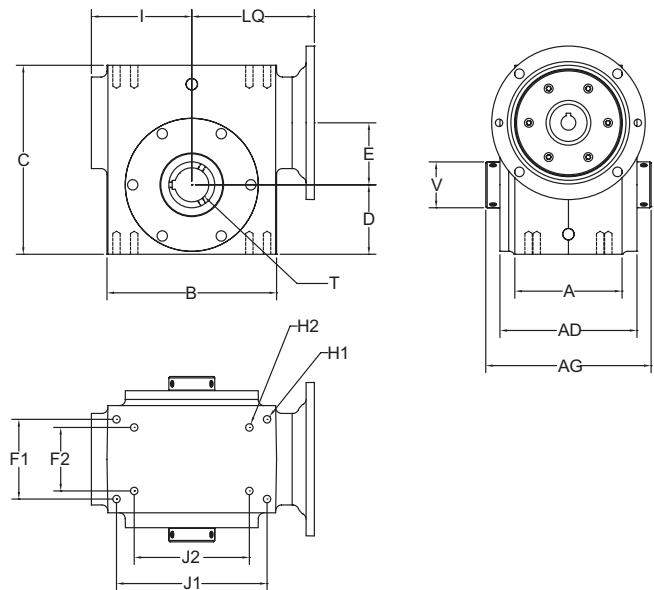
HMQ Style

	A	AD	B	C	D	E	F1	F2	H1	H2	I	J1	J2	LQ (56C/ 140TC)	LQ (180TC)	T MAX	T KWY	V	AG
13	2.82	3.69	3.80	4.66	1.72	1.333	2.00	N/A	5/16-18	N/A	2.38	3.25	N/A	3.48	N/A	0.625	3/16 x 3/32	1.00	4.75
15	3.44	4.40	4.88	5.38	1.91	1.540	2.75	N/A	5/16-18	N/A	2.91	4.19	N/A	4.01	N/A	0.625	3/16 x 3/32	1.00	5.42
18	3.32	4.40	5.06	5.75	2.06	1.750	2.75	1.63	5/16-18	1/4-20	3.01	4.19	3.13	4.11	N/A	1.000	1/4 x 1/8	1.44	5.50
21	3.60	4.78	5.80	6.38	2.28	2.063	3.00	2.00	5/16-18	5/16-18	3.38	4.75	4.00	4.48	N/A	1.500	3/8 x 3/16	1.94	6.00
24	4.06	4.97	6.12	6.94	2.50	2.375	2.88	N/A	3/8-16	N/A	3.69	5.00	N/A	4.63	5.24	1.500	3/8 x 3/16	1.94	6.00
26	4.54	5.80	7.25	8.00	2.94	2.625	3.38	2.69	3/8-16	3/8-16	4.25	6.38	4.88	5.19	5.80	1.500	3/8 x 3/16	1.94	7.00
32	5.45	6.80	8.50	9.38	3.50	3.250	4.00	2.75	7/16-14	1/2-13	4.94	7.50	6.25	5.88	6.49	2.188	1/2 x 1/4	2.75	7.88

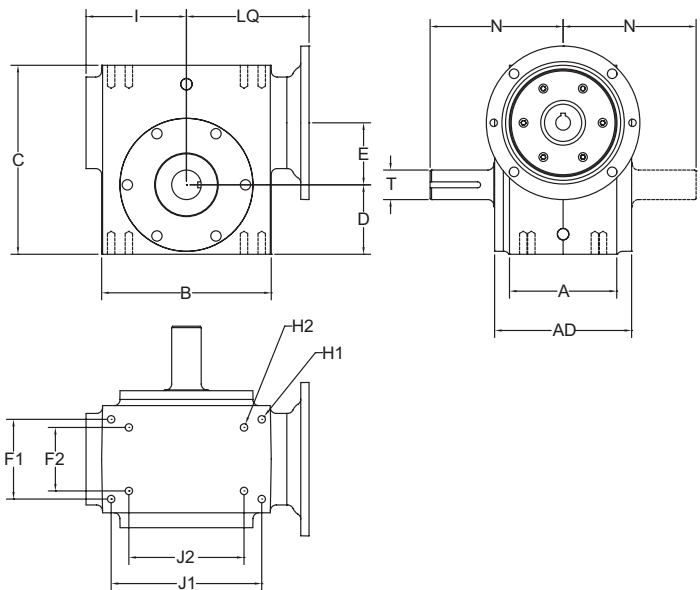
BMQ Style

	A	AD	B	C	D	E	F1	F2	H1	H2	I	J1	J2	LQ (56C/ 140TC)	LQ (180TC)	N	O/P Key	T
13	2.82	3.69	3.80	4.66	1.72	1.333	2.00	N/A	5/16-18	N/A	2.38	3.25	N/A	3.48	N/A	4.00	3/16 x 1.75	0.625
15	3.44	4.40	4.88	5.38	1.91	1.540	2.75	N/A	5/16-18	N/A	2.91	4.19	N/A	4.01	N/A	4.31	3/16 x 1.75	0.750
18	3.32	4.40	5.06	5.75	2.06	1.750	2.75	1.63	5/16-18	1/4-20	3.01	4.19	3.13	4.11	N/A	4.31	3/16 x 1.38	0.875
21	3.60	4.78	5.80	6.38	2.28	2.063	3.00	2.00	5/16-18	5/16-8	3.38	4.75	4.00	4.48	N/A	4.68	1/4 x 1.45	1.000
24	4.06	4.97	6.12	6.94	2.50	2.375	2.88	N/A	3/8-16	N/A	3.69	5.00	N/A	4.63	5.24	5.14	1/4 x 1.75	1.125
26	4.54	5.80	7.25	8.00	2.94	2.625	3.38	2.69	3/8-16	3/8-16	4.25	6.38	4.88	5.19	5.80	5.63	1/4 x 2.00	1.250
32	5.45	6.80	8.50	9.38	3.50	3.250	4.00	2.75	7/16-14	1/2-13	4.94	7.50	6.25	5.88	6.49	7.06	3/8 x 2.63	1.500

HMQ Style



BMQ Style



Stainless Steel Worm Gear Reducers

Benefits

- Polished, 316 stainless steel housing, flange and cover to withstand extreme environments
- Rounded cover and flange to prevent debris accumulation and improve washdown performance
- Two mounting patterns for easy interchangeability to standard worm gear reducer footprints
- O-ring on face of input flange provides a positive seal against moisture intrusion
- 303 stainless steel output shaft
- Stainless steel hardware, including square-head pipe plugs to eliminate entrapment in vent locations
- O-ring seal on the output cover eliminate gaskets, sealants and leaks
- Food grade synthetic lubricant, USDA class H1
- Etched housing stops entrapment caused by traditional nameplates
- Plastic screw and hole covers prevent entrapment

