



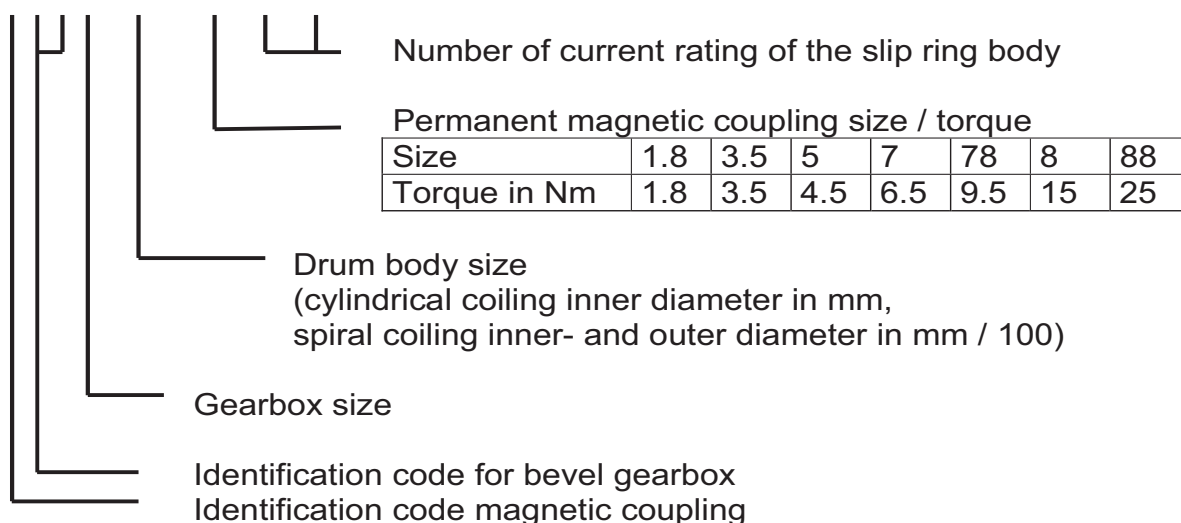
Motor Driven Cable Reeling Drums Type HF

Type HF

- Drive via a bevel gearbox, magnetic coupling and three-phase current brake motor
- Spiral and cylindrical coiling
- Vehicle speeds subdivided in 20 m/min, 40 m/min, 60 m/min and 80 m/min.
- Standard acceleration 0.2 m/s²
- Drum on mobile device
- Mounting height max. 2.5 m for spiral coiling or 1.5 m for cylindrical coiling (for drum outside diameter greater 3 m and spiral coiling mounting height max. 3.5 m as well as for mounting height greater than 1 m and cylindrical coiling mounting height max. 2.5 m).
- Cable types - Cordaflex SM-K, Trommelflex PUR-HF or Trommelflex NSHTÖU-J
- Ambient temperature -10°C up to +40°C
- **Attention, for changed parameters or customer requirements, e.g. higher velocities/acceleration or application of cable guiding devices etc. we request for consultation because the power of a drive can change due to this and a larger drive unit may be necessary.**

Type designation, identification code, variants

Example: HF I / 12 /28/ 7S 4 - 150





Motor Drive Cable Reeling Drums with Flat Gearbox, Magnetic Coupling, Type HF

Horizontal Payout, Spiral Coiling, Mounting Height 2.5 m, without Deflection,
Acceleration 0.2 m/s², Drum on Mobile Device



4 x 2.5 mm ² Cordaflex SM-K, Ø 14.8 mm, 0.31 kg/m Weigth, F tensile max. 300 N					
l (m)	SRB	Speed in m/min			
	3 + earth	20	40	60	80
	A	Drum Type			
30	36	HFI4/10/1.8S	HFI4/10/1.8S	HFI4/10/1.8S	HFI4/10/1.8S
50	36	HFI5/12/1.8S	HFI5/12/1.8S	HFI5/12/1.8S	HFI5/12/1.8S
85	36	HFI6/16/1.8S	HFI6/16/1.8S	HFI6/16/1.8S	HFI6/16/1.8S
120	36	HFI8/18/1.8S	HFI8/18/1.8S	HFI8/18/1.8S	HFI8/18/1.8S

4 x 4 mm ² Cordaflex SM-K, Ø 18 mm, 0.46 kg/m Weigth, F tensile max. 480 N					
l (m)	SRB	Speed in m/min			
	3 + Earth	20	40	60	80
	A	Drum Type			
25	42	HFI4/10/1.8S	HFI4/10/1.8S	HFI4/10/1.8S	HFI4/10/1.8S
35	42	HFI5/12/1.8S	HFI5/12/1.8S	HFI5/12/1.8S	HFI5/12/1.8S
70	42	HFI6/16/1.8S	HFI6/16/1.8S	HFI6/16/1.8S	HFI6/16/1.8S
95	42	HFI8/18/1.8S	HFI8/18/1.8S	HFI8/18/1.8S	HFI8/18/1.8S

4 x 6 mm ² Cordaflex SM-K, Ø 19.4 mm, 0.58 kg/m Weigth, F tensile max. 720 N					
l (m)	SRB	Speed in m/min			
	3 + Earth	20	40	60	80
	A	Drum Type			
35	60	HFI5/12/1.8S	HFI5/12/1.8S	HFI5/12/1.8S	HFI5/12/1.8S
65	60	HFI6/16/1.8S	HFI6/16/1.8S	HFI6/16/1.8S	HFI6/16/1.8S
90	60	HFI8/18/1.8S	HFI8/18/1.8S	HFI8/18/1.8S	HFI8/18/3.5S
120	60	HFI8/20/1.8S	HFI8/20/1.8S	HFI8/20/3.5S	HFI8/20/3.5S

4 x 10 mm ² Cordaflex SM-K, Ø 23.6 mm, 0.91 kg/m Weigth, F tensile max. 1200 N					
l (m)	SRB	Speed in m/min			
	3 + Earth	20	40	60	80
	A	Drum Type			
30	60	HFI5/12/1.8S	HFI5/12/1.8S	HFI5/12/1.8S	HFI5/12/3.5S
50	60	HFI6/16/1.8S	HFI6/16/1.8S	HFI6/15/3.5S	HFI6/15/3.5S
95	60	HFI8/20/1.8S	HFI8/20/1.8S	HFI8/20/3.5S	HFI8/20/3.5S
150	60	HFI10/25/5S	HFI10/25/5S	HFI10/25/5S	HFI10/25/5S

4 x 16 mm ² Cordaflex SM-K, Ø 26.7 mm, 1.24 kg/m Weigth, F tensile max. 1920 N					
l (m)	SRB	Speed in m/min			
	3 + Earth	20	40	60	80
	A	Drum Type			
25	125	HFI5/12/1.8S	HFI5/12/1.8S	HFI5/12/3.5S	HFI5/12/3.5S
45	125	HFI6/16/1.8S	HFI6/16/1.8S	HFI6/15/3.5S	HFI6/15/3.5S
80	125	HFI8/20/1.8S	HFI8/20/3.5S	HFI8/20/3.5S	HFI8/20/5S
135	150	HFI10/25/5S	HFI10/25/5S	HFI10/25/5S	HFI10/25/7S
195	150	HFI12/30/5S	HFI12/30/5S	HFI12/30/5S	HFI12/30/7S

4 x 25 mm ² Cordaflex SM-K, Ø 31.5 mm, 1.85 kg/m Weigth, F tensile max. 3000 N					
l (m)	SRB	Speed in m/min			
	3 + Earth	20	40	60	80
	A	Drum Type			
35	125	HFI6/15/3.5S	HFI6/15/3.5S	HFI6/15/5S	HFI6/15/7S
70	125	HFI8/20/3.5S	HFI8/20/5S	HFI8/20/5S	HFI8/20/7S
110	150	HFI10/25/5S	HFI10/25/7S	HFI10/25/7S	HFI10/25/7S
165	150	HFI12/30/7S	HFI12/30/7S	HFI12/30/7S	HFI10/25/7S

Drawing No. 06-32-00-000 und 06-33-00-000





Motor Drive Cable Reeling Drums with Flat Gearbox, Magnetic Coupling, Type HF

Horizontal Payout, Spiral Coiling, Mounting Height 2.5 m, without Deflection,
Acceleration 0.2 m/s², Drum on Mobile Device



3 x 35 + 3 x 16/3 mm ² Cordaflex SM-K, Ø 31.5 mm, 1.85 kg/m Weigth, F tensile max. 3000 N					
l (m)	SRB	Speed in m/min			
	3 + Earth	20	40	60	80
	A	Drum Type			
35	125	HFI6/15/3.5S	HFI6/15/3.5S	HFI6/15/5S	HFI6/15/7S
70	125	HFI8/20/3.5S	HFI8/20/5S	HFI8/20/5S	HFI8/20/7S
110	150	HFII10/25/5S	HFII10/25/7S	HFII10/25/7S	HFII10/25/7S
165	150	HFII12/30/7S	HFII12/30/7S	HFII12/30/7S	HFII10/25/7S

3 x 50 + 3 x 25/3 mm ² Cordaflex SM-K, Ø 37.4 mm, 2.85 kg/m Weigth, F tensile max. 4500 N					
l (m)	SRB	Speed in m/min			
	3 + Earth	20	40	60	80
	A	Drum Type			
30	220	HFII6/15/5S	HFII6/15/5S	HFII6/15/7S	HFII6/15/7S
65	220	HFII10/22/5S	HFII10/22/5S	HFII10/22/7S	HFII10/22/7S
95	220	HFII10/25/5S	HFII10/25/5S	HFII10/25/7S	HFII10/25/7S
140	220	HFII12/30/5S	HFII12/30/7S	HFII12/30/7S	

3 x 70 + 3 x 35/3 mm ² Cordaflex SM-K, Ø 42.7 mm, 3.92 kg/m Weigth, F tensile max. 6300 N					
l (m)	SRB	Speed in m/min			
	3 + Earth	20	40	60	80
	A	Drum Type			
55	220	HFII10/22/7S	HFII10/22/7S	HFII10/22/7S	
120	220	HFII12/30/7S	HFII12/30/7S		

Drawing No.06-32-00-000 und 06-33-00-000



Motor Drive Cable Reeling Drums with Flat Gearbox, Magnetic Coupling, Type HF

Horizontal Payout, Spiral Coiling, Mounting Height 2.5 m, without Deflection,
Acceleration 0.2 m/s², Drum on Mobile Device



4 x 2.5 mm ² Trommelflex PUR-HF, Ø 12.3 mm, 0.21 kg/m Weigth, F tensile max. 1500 N					
l (m)	SRB	Speed in m/min			
	3 + Earth	20	40	60	80
	A	Drum Type			
45	36	HFI4/10/1.8S	HFI4/10/1.8S	HFI4/10/1.8S	HFI4/10/1.8S
65	36	HFI5/12/1.8S	HFI5/12/1.8S	HFI5/12/1.8S	HFI5/12/1.8S
105	36	HFI6/15/1.8S	HFI6/15/1.8S	HFI6/15/1.8S	HFI6/15/1.8S
150	36	HFI8/18/1.8S	HFI8/18/1.8S	HFI8/18/1.8S	HFI8/18/1.8S

4 x 4 mm ² Trommelflex PUR-HF, Ø 13.6 mm, 0.29 kg/m Weigth, F tensile max. 1800 N					
l (m)	SRB	Speed in m/min			
	3 + Earth	20	40	60	80
	A	Drum Type			
40	42	HFI4/10/1.8S	HFI4/10/1.8S	HFI4/10/1.8S	HFI4/10/1.8S
55	42	HFI5/12/1.8S	HFI5/12/1.8S	HFI5/12/1.8S	HFI5/12/1.8S
100	42	HFI6/15/1.8S	HFI6/15/1.8S	HFI6/15/1.8S	HFI6/15/1.8S
135	42	HFI8/18/1.8S	HFI8/18/1.8S	HFI8/18/1.8S	HFI8/18/1.8S

4 x 6 mm ² Trommelflex PUR-HF, Ø 14.9 mm, 0.38 kg/m Weigth, F tensile max. 2000 N					
l (m)	SRB	Speed in m/min			
	3 + Earth	20	40	60	80
	A	Drum Type			
50	60	HFI5/12/1.8S	HFI5/12/1.8S	HFI5/12/1.8S	HFI5/12/1.8S
90	60	HFI6/15/1.8S	HFI6/15/1.8S	HFI6/15/1.8S	HFI6/15/1.8S
120	60	HFI8/18/1.8S	HFI8/18/1.8S	HFI8/18/1.8S	HFI8/18/1.8S
160	60	HFI8/20/1.8S	HFI8/20/1.8S	HFI8/20/1.8S	HFI8/20/3.5S

4 x 10 mm ² Trommelflex PUR-HF, Ø 18.9 mm, 0.61 kg/m Weigth, F tensile max. 2000 N					
l (m)	SRB	Speed in m/min			
	3 + Earth	20	40	60	80
	A	Drum Type			
40	60	HFI5/12/1.8S	HFI5/12/1.8S	HFI5/12/1.8S	HFI5/12/3.5S
65	60	HFI6/16/1.8S	HFI6/16/1.8S	HFI6/15/1.8S	HFI6/15/3.5S
120	60	HFI8/20/1.8S	HFI8/20/1.8S	HFI8/20/3.5S	HFI8/20/3.5S
195	60	HFI10/25/5S	HFI10/25/5S	HFI10/25/5S	HFI10/25/5S

4 x 16 mm ² Trommelflex PUR-HF, Ø 22.1 mm, 0.92 kg/m Weigth, F tensile max. 2500 N					
l (m)	SRB	Speed in m/min			
	3 + Earth	20	40	60	80
	A	Drum Type			
55	125	HFI6/15/1.8S	HFI6/15/1.8S	HFI6/15/3.5S	HFI6/15/3.5S
105	125	HFI8/20/1.8S	HFI8/20/3.5S	HFI8/20/3.5S	HFI8/20/3.5S
160	150	HFI10/25/5S	HFI10/25/5S	HFI10/25/5S	HFI10/25/5S
240	150	HFI12/30/5S	HFI12/30/5S	HFI12/30/5S	HFI12/30/5S

4 x 25 mm ² Trommelflex PUR-HF, Ø 25.5 mm, 1.27 kg/m Weigth, F tensile max. 2500 N					
l (m)	SRB	Speed in m/min			
	3 + Earth	20	40	60	80
	A	Drum Type			
35	125	HFI6/15/1.8S	HFI6/15/1.8S	HFI6/15/3.5S	HFI6/15/7S
70	125	HFI8/20/3.5S	HFI8/20/3.5S	HFI8/20/3.5S	HFI8/20/5S
110	150	HFI10/25/5S	HFI10/25/5S	HFI10/25/5S	HFI10/25/7S
165	150	HFI12/30/5S	HFI12/30/5S	HFI12/30/7S	HFI10/25/7S

Drawing No. 06-32-00-000 und 06-33-00-000





Motor Drive Cable Reeling Drums with Flat Gearbox, Magnetic Coupling, Type HF

Horizontal Payout, Spiral Coiling, Mounting Height 2.5 m, without Deflection,
Acceleration 0.2 m/s², Drum on Mobile Device



4 x 35 mm ² Trommelflex PUR-HF, Ø 30 mm, 1.78 kg/m Weigth, F tensile max. 2500 N						
l (m)	SRB	Speed in m/min				
	3 + Earth	20	40	60	80	
	A	Drum Type				
40	125	HFI6/15/1.8S	HFI6/15/3.5S	HFI6/15/3.5S	HFI6/15/7S	
75	125	HFI8/20/1.8S	HFI8/20/3.5S	HFI8/20/5S	HFI8/20/7S	
120	150	HFI10/25/5S	HFI10/25/5S	HFI10/25/7S	HFI10/25/7S	
175	150	HFI12/30/5	HFI12/30/7S	HFI12/30/7S	HFI10/25/78S	



Motor Drive Cable Reeling Drums with Flat Gearbox, Magnetic Coupling, Type HF

Horizontal Payout, Spiral Coiling, Mounting Height 2.5 m, without Deflection,
Acceleration 0.2 m/s², Drum on Mobile Device



4 x 2.5 mm ² NSHTÖU-J Trommelflex, Ø 17.2 mm, 0.36 kg/m Weigth, F tensile max. 150 N					
l (m)	SRB	Speed in m/min			
	3 + Earth	20	40	60	80
	A	Drum Type			
30	36	HFI4/10/1.8S	HFI4/10/1.8S	HFI4/10/1.8S	HFI4/10/1.8S
75	36	HFI6/16/1.8S	HFI6/16/1.8S	HFI6/16/1.8S	HFI6/16/1.8S
105	36	HFI8/18/1.8S	HFI8/18/1.8S	HFI8/18/1.8S	HFI8/18/1.8S
140	36	HFI8/20/1.8S	HFI8/20/1.8S	HFI8/20/1.8S	HFI8/20/3.5S

4 x 4 mm ² NSHTÖU-J Trommelflex, Ø 19.1 mm, 0.55 kg/m Weigth, F tensile max. 240 N					
l (m)	SRB	Speed in m/min			
	3 + Earth	20	40	60	80
	A	Drum Type			
40	42	HFI5/12/1.8S	HFI5/12/1.8S	HFI5/12/1.8S	HFI5/12/1.8S
65	42	HFI6/16/1.8S	HFI6/16/1.8S	HFI6/16/1.8S	HFI6/16/1.8S
120	42	HFI8/20/1.8S	HFI8/20/1.8S	HFI8/20/3.5S	HFI8/20/3.5S

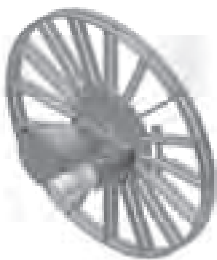
4 x 6 mm ² NSHTÖU-J Trommelflex, Ø 20.4 mm, 0.6 kg/m Weigth, F tensile max. 360 N					
l (m)	SRB	Speed in m/min			
	3 + Earth	20	40	60	80
	A	Drum Type			
35	60	HFI5/12/1.8S	HFI5/12/1.8S	HFI5/12/1.8S	HFI5/12/1.8S
60	60	HFI6/16/1.8S	HFI6/16/1.8S	HFI6/16/1.8S	HFI6/15/3.5S
85	60	HFI8/18/1.8S	HFI8/18/1.8S	HFI8/18/1.8S	HFI8/18/3.5S
110	60	HFI8/20/1.8S	HFI8/20/1.8S	HFI8/20/3.5S	HFI8/20/3.5S

4 x 10 mm ² NSHTÖU-J Trommelflex, Ø 25.7 mm, 0.98 kg/m Weigth, F tensile max. 600 N					
l (m)	SRB	Speed in m/min			
	3 + Earth	20	40	60	80
	A	Drum Type			
25	60	HFI5/12/1.8S	HFI5/12/1.8S	HFI5/12/1.8S	HFI5/12/3.5S
45	60	HFI6/16/1.8S	HFI6/16/1.8S	HFI6/15/3.5S	HFI6/15/3.5S
85	60	HFI8/20/3.5S	HFI8/20/3.5S	HFI8/20/3.5S	HFI8/20/3.5S
140	60	HFI10/25/5S	HFI10/25/5S	HFI10/25/5S	HFI10/25/5S

4 x 16 mm ² NSHTÖU-J Trommelflex, Ø 30.3 mm, 1.38 kg/m Weigth, F tensile max. 960 N					
l (m)	SRB	Speed in m/min			
	3 + Earth	20	40	60	80
	A	Drum Type			
35	125	HFI6/15/3.5S	HFI6/15/3.5S	HFI6/15/3.5S	HFI6/15/5S
70	125	HFI8/20/3.5S	HFI8/20/3.5S	HFI8/20/3.5S	HFI8/20/5S
115	150	HFI10/25/5S	HFI10/25/5S	HFI10/25/5S	HFI10/25/7S
170	150	HFI12/30/5S	HFI12/30/7S	HFI12/30/7S	HFI12/30/7S

4 x 25 mm ² NSHTÖU-J Trommelflex, Ø 35.7 mm, 2.02 kg/m Weigth, F tensile max. 1500 N					
l (m)	SRB	Speed in m/min			
	3 + Earth	20	40	60	80
	A	Drum Type			
30	125	HFI6/15/3.5S	HFI6/15/3.5S	HFI6/15/5S	HFI6/15/7S
55	125	HFI8/20/5S	HFI8/20/5S	HFI8/20/5S	HFI8/20/7S
100	150	HFI10/25/5S	HFI10/25/5S	HFI10/25/7S	HFI10/25/7S
145	150	HFI12/30/7S	HFI12/30/7S	HFI12/30/7S	HFI12/30/7S

Drawing No. 06-32-00-000 und 06-33-00-000





Motor Drive Cable Reeling Drums with Flat Gearbox, Magnetic Coupling, Type HF

Horizontal Payout, Spiral Coiling, Mounting Height 2.5 m, without Deflection,
Acceleration 0.2 m/s², Drum on Mobile Device



4 x 35 mm ² NSHTÖU-J Trommelflex, Ø 38.6 mm, 2.57 kg/m Weigth, F tensile max. 2100 N						
l (m)	SRB	Speed in m/min				
	3 + Earth	20	40	60	80	
	A	Drum Type				
50	150	HFII8/20/7S	HFII8/20/7S	HFII8/20/7S	HFII8/20/78S	
85	150	HFII10/25/7S	HFII10/25/7S	HFII10/25/7S	HFII10/25/78S	
130	150	HFII12/30/78S	HFII12/30/78S	HFII12/30/78S	HFII12/30/78S	
4 x 50 mm ² NSHTÖU-J Trommelflex, Ø 46 mm, 3.6 kg/m Weigth, F tensile max. 3000 N						
l (m)	SRB	Speed in m/min				
	3 + Earth	20	40	60	80	
	A	Drum Type				
40	150	HFII8/20/7S	HFII8/20/7S	HFII8/20/78S	HFII8/20/78S	
70	150	HFII10/25/78S	HFII10/25/78S	HFII10/25/78S		

Drawing No. 06-32-00-000
und 06-33-00-000



Motor Drive Cable Reeling Drums with Flat Gearbox, Magnetic Coupling, Type HF

Horizontal Payout, Cylindrical Coiling (max. 4 Layers), Mounting Height 1.5 m, without Deflection, Acceleration 0.2 m/s², Drum on Mobile Device



4 x 2.5 mm ² Cordaflex SM-K, Ø 14.8 mm, 0.31 kg/m Weigth, F tensile max. 300 N					
l (m)	SRB	Speed in m/min			
	3 + Earth	20	40	60	80
	A	Drum Type			
30	36	HFI221/1.8S	HFI221/1.8S	HFI221/1.8S	HFI221/1.8S
50	36	HFI300/1.8S	HFI300/1.8S	HFI300/1.8S	HFI300/1.8S
85	36	HFI421/1.8S	HFI421/1.8S	HFI421/1.8S	HFI421/1.8S
135	36	HFI530/1.8S	HFI530/1.8S	HFI530/1.8S	HFI530/1.8S

4 x 4 mm ² Cordaflex SM-K, Ø 18 mm, 0.46 kg/m Weigth, F tensile max. 480 N					
l (m)	SRB	Speed in m/min			
	3 + Earth	20	40	60	80
	A	Drum Type			
15	42	HFI221/1.8S	HFI221/1.8S	HFI221/1.8S	HFI221/1.8S
40	42	HFI300/1.8S	HFI300/1.8S	HFI300/1.8S	HFI300/1.8S
70	42	HFI421/1.8S	HFI421/1.8S	HFI421/1.8S	HFI421/1.8S
115	42	HFI530/1.8S	HFI530/1.8S	HFI530/1.8S	HFI530/1.8S

4 x 6 mm ² Cordaflex SM-K, Ø 19.4 mm, 0.58 kg/m Weigth, F tensile max. 720 N					
l (m)	SRB	Speed in m/min			
	3 + Earth	20	40	60	80
	A	Drum Type			
25	60	HFI300/1.8S	HFI300/1.8S	HFI300/1.8S	HFI300/1.8S
45	60	HFI420/1.8S	HFI420/1.8S	HFI420/1.8S	HFI420/1.8S
110	60	HFI530/1.8S	HFI530/1.8S	HFI530/1.8S	HFI530/1.8S
160	60	HFI700/5S	HFI700/5S	HFI700/5S	HFI700/5S

4 x 10 mm ² Cordaflex SM-K, Ø 23.6 mm, 0.91 kg/m Weigth, F tensile max. 1200 N					
l (m)	SRB	Speed in m/min			
	3 + Earth	20	40	60	80
	A	Drum Type			
20	60	HFI300/1.8S	HFI300/1.8S	HFI300/1.8S	HFI300/1.8S
55	60	HFI421/1.8S	HFI421/1.8S	HFI421/1.8S	HFI421/1.8S
90	60	HFI530/1.8S	HFI530/1.8S	HFI530/1.8S	HFI530/1.8S
135	60	HFI700/5S	HFI700/5S	HFI700/5S	HFI700/5S
170	60	HFI800/5S	HFI800/5S	HFI800/5S	HFI800/5S



4 x 16 mm ² Cordaflex SM-K, Ø 26.7 mm, 1.24 kg/m Weigth, F tensile max. 1920 N					
l (m)	SRB	Speed in m/min			
	3 + Earth	20	40	60	80
	A	Drum Type			
35	125	HFI421/1.8S	HFI421/1.8S	HFI421/1.8S	HFI421/1.8S
80	125	HFI530/1.8S	HFI530/1.8S	HFI530/1.8S	HFI530/1.8S
115	150	HFI700/5S	HFI700/5S	HFI700/5S	HFI700/5S
150	150	HFI800/5S	HFI800/5S	HFI800/5S	HFI800/5S
185	150	HFI1000/5S	HFI1000/5S	HFI1000/5S	HFI1000/7S

4 x 25 mm ² Cordaflex SM-K, Ø 31.5 mm, 1.85 kg/m Weigth, F tensile max. 3000 N					
l (m)	SRB	Speed in m/min			
	3 + Earth	20	40	60	80
	A	Drum Type			
30	125	HFI421/1.8S	HFI421/1.8S	HFI421/1.8S	HFI421/3.5S
70	125	HFI531/1.8S	HFI531/1.8S	HFI531/3.5S	HFI531/3.5S
95	150	HFI700/5S	HFI700/5S	HFI700/5S	HFI700/5S
130	150	HFI800/5S	HFI800/5S	HFI800/5S	HFI800/7S

Drawing No. 06-30-00-000 und 06-31-(34)-00-000



Motor Drive Cable Reeling Drums with Flat Gearbox, Magnetic Coupling, Type HF

Horizontal Payout, Cylindrical Coiling (max. 4 Layers), Mounting Height 1.5 m,
without Deflection, Acceleration 0.2 m/s², Drum on Mobile Device



3 x 35 + 3 x 16/3 mm ² Cordaflex SM-K, Ø 31.5 mm, 2.16 kg/m Weigth, F tensile max. 3150 N					
l (m)	SRB	Speed in m/min			
	3 + Earth	20	40	60	80
	A	Drum Type			
30	125	HFI421/1.8S	HFI421/1.8S	HFI421/1.8S	HFI421/3.5S
70	125	HFI531/1.8S	HFI531/1.8S	HFI531/3.5S	HFI531/3.5S
95	150	HFI700/5S	HFI700/5S	HFI700/5S	HFI700/5S
130	150	HFI800/5S	HFI800/5S	HFI800/5S	HFI800/7S

3 x 50 + 3 x 25/3 mm ² Cordaflex SM-K, Ø 37.4 mm, 2.85 kg/m Weigth, F tensile max. 4500 N					
l (m)	SRB	Speed in m/min			
	3 + Earth	20	40	60	80
	A	Drum Type			
35	220	HFI531/5S	HFI531/5S	HFI531/5S	HFI531/5
55	220	HFI700/5S	HFI700/5S	HFI700/5S	HFI700/5S
90	220	HFI800/5S	HFI800/5S	HFI800/5S	HFI800/7S

3 x 70 + 3 x 35/3 mm ² Cordaflex SM-K, Ø 42.7 mm, 3.92 kg/m Weigth, F tensile max. 6300 N					
l (m)	SRB	Speed in m/min			
	3 + Earth	20	40	60	80
	A	Drum Type			
30	220	HFI531/5S	HFI531/5S	HFI531/5S	HFI531/5S
65	220	HFI800/5S	HFI800/5S	HFI800/5S	HFI800/7S

Drawing No. 06-30-00-000 und 06-31(34)-00-000



Motor Drive Cable Reeling Drums with Flat Gearbox, Magnetic Coupling, Type HF

Horizontal Payout, Cylindrical Coiling (max. 4 Layers), Mounting Height 1.5 m, without Deflection, Acceleration 0.2 m/s², Drum on Mobile Device



4 x 2.5 mm ² Trommelflex PUR-HF, Ø 12.3 mm, 0.21 kg/m Weigth, F tensile max. 1500 N					
l (m)	SRB	Speed in m/min			
	3 + Earth	20	40	60	80
	A	Drum Type			
35	36	HFI221/1.8S	HFI221/1.8S	HFI221/1.8S	HFI221/1.8S
55	36	HFI300/1.8S	HFI300/1.8S	HFI300/1.8S	HFI300/1.8S
100	36	HFI421/1.8S	HFI421/1.8S	HFI421/1.8S	HFI421/1.8S
170	36	HFI530/1.8S	HFI530/1.8S	HFI530/1.8S	HFI530/1.8S

4 x 4 mm ² Trommelflex PUR-HF, Ø 13.6 mm, 0.28 kg/m Weigth, F tensile max. 1800 N					
l (m)	SRB	Speed in m/min			
	3 + Earth	20	40	60	80
	A	Drum Type			
30	42	HFI221/1.8S	HFI221/1.8S	HFI221/1.8S	HFI221/1.8S
55	42	HFI300/1.8S	HFI300/1.8S	HFI300/1.8S	HFI300/1.8S
90	42	HFI421/1.8S	HFI421/1.8S	HFI421/1.8S	HFI421/1.8S
150	42	HFI530/1.8S	HFI530/1.8S	HFI530/1.8S	HFI530/1.8S

4 x 6 mm ² Trommelflex PUR-HF, Ø 14.9 mm, 0.37 kg/m Weigth, F tensile max. 2000 N					
l (m)	SRB	Speed in m/min			
	3 + Earth	20	40	60	80
	A	Drum Type			
50	60	HFI300/1.8S	HFI300/1.8S	HFI300/1.8S	HFI300/1.8S
85	60	HFI420/1.8S	HFI420/1.8S	HFI420/1.8S	HFI420/1.8S
110	60	HFI530/1.8S	HFI530/1.8S	HFI530/1.8S	HFI530/1.8S

4 x 10 mm ² Trommelflex PUR-HF, Ø 18.9 mm, 0.61 kg/m Weigth, F tensile max. 2000 N					
l (m)	SRB	Speed in m/min			
	3 + Earth	20	40	60	80
	A	Drum Type			
25	60	HFI300/1.8S	HFI300/1.8S	HFI300/1.8S	HFI300/1.8S
70	60	HFI421/1.8S	HFI421/1.8S	HFI421/1.8S	HFI421/1.8S
110	60	HFI530/1.8S	HFI530/1.8S	HFI530/1.8S	HFI530/1.8S



4 x 16 mm ² Trommelflex PUR-HF, Ø 22.1 mm, 0.92 kg/m Weigth, F tensile max. 2500 N					
l (m)	SRB	Speed in m/min			
	3 + Earth	20	40	60	80
	A	Drum Type			
60	125	HFI421/1.8S	HFI421/1.8S	HFI421/1.8S	HFI421/1.8S
95	125	HFI530/1.8S	HFI530/1.8S	HFI530/1.8S	HFI530/1.8S
140	150	HFI701/5S	HFI701/5S	HFI701/5S	HFI701/5S
180	150	HFI800/5S	HFI800/5S	HFI800/5S	HFI800/5S

4 x 25 mm ² Trommelflex PUR-HF, Ø 25.5 mm, 1.27 kg/m Weigth, F tensile max. 2500 N					
l (m)	SRB	Speed in m/min			
	3 + Earth	20	40	60	80
	A	Drum Type			
30	125	HFI421/1.8S	HFI421/1.8S	HFI421/1.8S	HFI421/3.5S
85	125	HFI530/1.8S	HFI530/1.8S	HFI530/3.5S	HFI530/3.5S
125	150	HFI701/5S	HFI701/5S	HFI701/5S	HFI701/5S
150	150	HFI800/5S	HFI800/5S	HFI800/5S	HFI800/5S



4 x 35 mm ² Trommelflex PUR-HF, Ø 30 mm, 1.78 kg/m Weigth, F tensile max. 2500 N					
l (m)	SRB	Speed in m/min			
	3 + Earth	20	40	60	80
	A	Drum Type			
30	125	HFI421/1.8S	HFI421/1.8S	HFI421/1.8S	HFI421/3.5S
60	125	HFI531/1.8S	HFI531/1.8S	HFI531/3.5S	HFI531/3.5S
105	150	HFI701/5S	HFI701/5S	HFI701/5S	HFI701/5S
155	150	HFI1000/5S	HFI1000/5S	HFI1000/5S	HFI1000/7S

Drawing No. 06-30-00-000 und 06-31-(34)-00-000



Motor Drive Cable Reeling Drums with Flat Gearbox, Magnetic Coupling, Type HF

Horizontal Payout, Cylindrical Coiling (max. 4 Layers), Mounting Height 1.5 m,
without Deflection, Acceleration 0.2 m/s², Drum on Mobile Device



4 x 2.5 mm ² NSHTÖU-J Trommelflex, Ø 17.2 mm, 0.36 kg/m Weigth, F tensile max. 150 N					
l (m)	SRB	Speed in m/min			
	3 + Earth	20	40	60	80
	A	Drum Type			
15	36	HFI221/1.8S	HFI221/1.8S	HFI221/1.8S	HFI221/1.8S
40	36	HFI300/1.8S	HFI300/1.8S	HFI300/1.8S	HFI300/1.8S
75	36	HFI420/1.8S	HFI420/1.8S	HFI420/1.8S	HFI420/1.8S
120	36	HFI530/1.8S	HFI530/1.8S	HFI530/1.8S	HFI530/1.8S

4 x 4 mm ² NSHTÖU-J Trommelflex, Ø 19.1 mm, 0.55 kg/m Weigth, F tensile max. 240 N					
l (m)	SRB	Speed in m/min			
	3 + Earth	20	40	60	80
	A	Drum Type			
25	42	HFI300/1.8S	HFI300/1.8S	HFI300/1.8S	HFI300/1.8S
45	42	HFI420/1.8S	HFI420/1.8S	HFI420/1.8S	HFI420/1.8S
65	42	HFI421/1.8S	HFI421/1.8S	HFI421/1.8S	HFI421/1.8S
110	42	HFI530/1.8S	HFI530/1.8S	HFI530/1.8S	HFI530/1.8S

4 x 6 mm ² NSHTÖU-J Trommelflex, Ø 20.4 mm, 0.6 kg/m Weigth, F tensile max. 360 N					
l (m)	SRB	Speed in m/min			
	3 + Earth	20	40	60	80
	A	Drum Type			
25	60	HFI300/1.8S	HFI300/1.8S	HFI300/1.8S	HFI300/1.8S
45	60	HFI420/1.8S	HFI420/1.8S	HFI420/1.8S	HFI420/1.8S
65	60	HFI421/1.8S	HFI421/1.8S	HFI421/1.8S	HFI421/1.8S
100	60	HFI530/1.8S	HFI530/1.8S	HFI530/1.8S	HFI530/1.8S

4 x 10 mm ² NSHTÖU-J Trommelflex, Ø 25.7 mm, 0.98 kg/m Weigth, F tensile max. 600 N					
l (m)	SRB	Speed in m/min			
	3 + Earth	20	40	60	80
	A	Drum Type			
20	60	HFI301/1.8S	HFI301/1.8S	HFI301/1.8S	HFI301/1.8S
80	60	HFI530/1.8S	HFI530/1.8S	HFI530/1.8S	HFI530/1.8S
115	60	HFI1700/5S	HFI1700/5S	HFI1700/5S	HFI1700/5S
150	60	HFI1800/5S	HFI1800/5S	HFI1800/5S	HFI1800/5S



4 x 16 mm ² NSHTÖU-J Trommelflex, Ø 30.3 mm, 1.38 kg/m Weigth, F tensile max. 960 N					
l (m)	SRB	Speed in m/min			
	3 + Earth	20	40	60	80
	A	Drum Type			
30	125	HFI421/1.8S	HFI421/1.8S	HFI421/1.8S	HFI421/1.8S
70	125	HFI531/1.8S	HFI531/1.8S	HFI531/1.8S	HFI531/1.8S
105	150	HFI1700/5S	HFI1700/5S	HFI1700/5S	HFI1700/5S
160	150	HFI1000/5S	HFI1000/5S	HFI1000/5S	HFI1000/5S

4 x 25 mm ² NSHTÖU-J Trommelflex, Ø 35.7 mm, 2.02 kg/m Weigth, F tensile max. 1500 N					
l (m)	SRB	Speed in m/min			
	3 + Earth	20	40	60	80
	A	Drum Type			
40	125	HFI530/1.8S	HFI530/1.8S	HFI530/1.8S	HFI530/3.5S
90	150	HFI1700/5S	HFI1700/5S	HFI1700/5S	HFI1700/5S
110	150	HFI1800/5S	HFI1800/5S	HFI1800/5S	HFI1800/5S
160	150	HFI1200/5S	HFI1200/5S	HFI1200/5S	HFI1200/7S

Drawing No. 06-30-00-000 und 06-31-(34)-00-000



Motor Drive Cable Reeling Drums with Flat Gearbox, Magnetic Coupling, Type HF

Horizontal Payout, Cylindrical Coiling (max. 4 Layers), Mounting Height 1.5 m,
without Deflection, Acceleration 0.2 m/s², Drum on Mobile Device



4 x 35 mm ² NSHTÖU-J Trommelflex, Ø 38.6 mm, 2.57 kg/m Weigth, F tensile max. 2100 N					
l (m)	SRB	Speed in m/min			
	3 + Earth	20	40	60	80
	A	Drum Type			
55	150	HFII700/5S	HFII700/5S	HFII700/5S	HFII700/5S
100	150	HFII800/5S	HFII800/5S	HFII800/5S	HFII800/7S

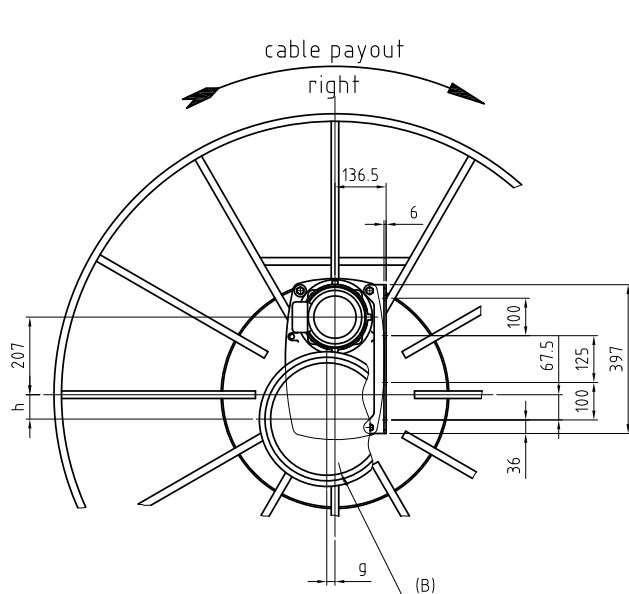
4 x 50 mm ² NSHTÖU-J Trommelflex, Ø 46 mm, 3.6 kg/m Weigth, F tensile max. 3000 N					
l (m)	SRB	Speed in m/min			
	3 + Earth	20	40	60	80
	A	Drum Type			
50	220	HFII700/5S	HFII700/5S	HFII700/5S	HFII700/5S
90	220	HFII800/5S	HFII800/5S	HFII800/7S	HFII800/7S

4 x 70 mm ² NSHTÖU-J Trommelflex, Ø 49.7 mm, 4.65 kg/m Weigth, F tensile max. 4200 N					
l (m)	SRB	Speed in m/min			
	3 + Earth	20	40	60	80
	A	Drum Type			
40	220	HFII700/5S	HFII700/5S	HFII700/5S	HFII700/7S
55	220	HFII800/5S	HFII800/5S	HFII800/7S	HFII800/7S

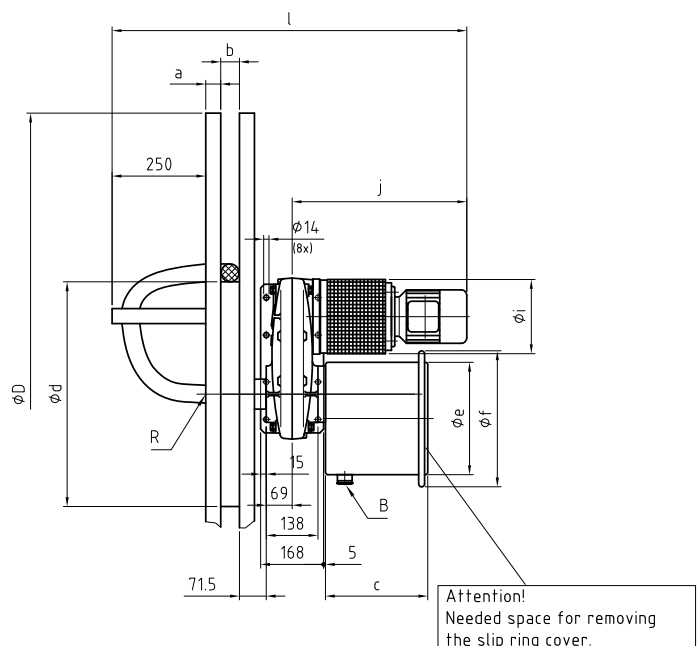
Drawing No. 06-30-00-000 und 06-31-(34)-00-000

Drawing HF Series, Spiral Coiling

Type	Drawing No.	3+earth in A	ød	øD	a	b	c	e	f	g	øh	i	j	k	l
HFI4/10/1.8S	06-32-00-000	36	400	1000	71.5	Cable Diameter +5%	40	168	15	138	14	36	67.5	100	125
HFI5/12/1.8S	06-32-00-000	36	500	1200	71.5		40	168	15	138	14	36	67.5	100	125
HFI6/15/1.8S	06-32-00-000	36	600	1500	71.5		40	168	15	138	14	36	67.5	100	125
HFI8/18/1.8S	06-32-00-000	36	800	1800	71.5		40	168	15	138	14	36	67.5	100	125
HFI8/20/1.8S	06-32-00-000	36	800	2000	80		50	168	15	138	14	36	67.5	100	125
HFI8/20/3.5S	06-32-00-000	36	800	200	80		50	168	15	138	14	36	67.5	100	125
HFI4/10/1.8S	06-32-00-000	42	400	1000	71.5		40	168	15	138	14	36	67.5	100	125
HFI5/12/1.8S	06-32-00-000	42	500	1200	71.5		40	168	15	138	14	36	67.5	100	125
HFI6/15/1.8S	06-32-00-000	42	600	1500	71.5		40	168	15	138	14	36	67.5	100	125
HFI8/18/1.8S	06-32-00-000	42	800	1800	71.5		40	168	15	138	14	36	67.5	100	125
HFI8/20/1.8S	06-32-00-000	42	800	2000	80		50	168	15	138	14	36	67.5	100	125
HFI8/20/3.5S	06-32-00-000	42	800	2000	80		50	168	15	138	14	36	67.5	100	125
HFI5/12/1.8S	06-32-00-000	60	500	1200	71.5		40	168	15	138	14	36	67.5	100	125
HFI5/12/3.5S	06-32-00-000	60	500	1200	71.5		40	168	15	138	14	36	67.5	100	125
HFI6/15/1.8S	06-32-00-000	60	600	1500	71.5		40	168	15	138	14	36	67.5	100	125
HFI6/15/3.5S	06-32-00-000	60	600	1500	71.5		40	168	15	138	14	36	67.5	100	125
HFI8/18/1.8S	06-32-00-000	60	800	1800	71.5		40	168	15	138	14	36	67.5	100	125
HFI8/18/3.5S	06-32-00-000	60	800	1800	71.5		40	168	15	138	14	36	67.5	100	125
HFI8/20/1.8S	06-32-00-000	60	800	2000	80		50	168	15	138	14	36	67.5	100	125
HFI8/20/3.5S	06-32-00-000	60	800	2000	80		50	168	15	138	14	36	67.5	100	125
HFI10/25/5S	06-33-00-000	60	1000	2500	100		60	234	30	174	18	45	100	150	150
HFI5/12/1.8S	06-32-00-000	125	500	1200	71.5		40	168	15	135	14	36	67.5	100	125
HFI6/15/1.8S	06-32-00-000	125	600	1500	71.5		40	168	15	135	14	36	67.5	100	125
HFI6/15/3.5S	06-32-00-000	125	600	1500	71.5		40	168	15	135	14	36	67.5	100	125
HFI6/15/5S	06-32-00-000	125	600	1500	71.5		40	168	15	135	14	36	67.5	100	125
HFI6/15/7S	06-32-00-000	125	600	1500	71.5		40	168	15	135	14	36	67.5	100	125
HFI8/20/1.8S	06-32-00-000	125	800	2000	80		50	168	15	135	14	36	67.5	100	125
HFI8/20/3.5S	06-32-00-000	125	800	2000	80		50	168	15	135	14	36	67.5	100	125
HFI8/20/5S	06-32-00-000	125	800	2000	80		50	168	15	135	14	36	67.5	100	125
HFI8/20/7S	06-32-00-000	125	800	2000	80		50	168	15	135	14	36	67.5	100	125

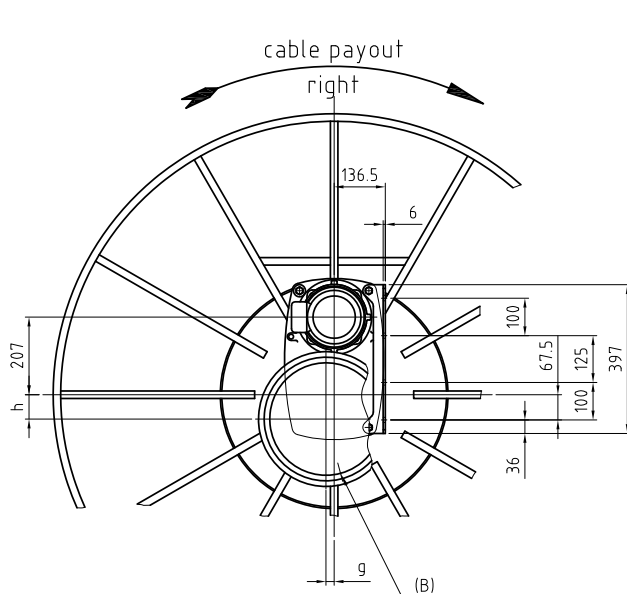


R= Cable entry to the rings
B= Cable entry to the brushes

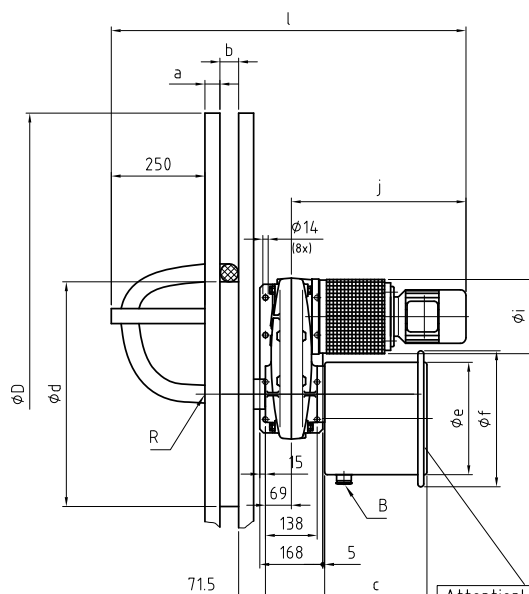


Drawing HF Series, Spiral Coiling

Type	Drawing No.	3+earth in A	m	n	o	p	q	ør	s	t	u	v	w	øx	øy
HFI4/10/1.8S	06-32-00-000	36	397	6	136.5	69	482	205	207	70	/	5	230	300	365
HFI5/12/1.8S	06-32-00-000	36	397	6	136.5	69	482	205	207	70	/	5	230	300	365
HFI6/15/1.8S	06-32-00-000	36	397	6	136.5	69	482	205	207	70	/	5	230	300	365
HFI8/18/1.8S	06-32-00-000	36	397	6	136.5	69	482	205	207	70	/	5	230	300	365
HFI8/20/1.8S	06-32-00-000	36	397	6	136.5	69	482	205	207	70	/	5	230	300	365
HFI8/20/3.5S	06-32-00-000	36	397	6	136.5	69	630	205	207	70	/	5	230	300	365
HFI4/10/1.8S	06-32-00-000	42	397	6	136.5	69	482	205	207	70	/	5	230	300	365
HFI5/12/1.8S	06-32-00-000	42	397	6	136.5	69	482	205	207	70	/	5	230	300	365
HFI6/15/1.8S	06-32-00-000	42	397	6	136.5	69	482	205	207	70	/	5	230	300	365
HFI8/18/1.8S	06-32-00-000	42	397	6	136.5	69	482	205	207	70	/	5	230	300	365
HFI8/20/1.8S	06-32-00-000	42	397	6	136.5	69	482	205	207	70	/	5	230	300	365
HFI8/20/3.5S	06-32-00-000	42	397	6	136.5	69	630	205	207	70	/	5	230	300	365
HFI5/12/1.8S	06-32-00-000	60	397	6	136.5	69	482	205	207	70	/	5	230	300	365
HFI5/12/3.5S	06-32-00-000	60	397	6	136.5	69	630	205	207	70	/	5	230	300	365
HFI6/15/1.8S	06-32-00-000	60	397	6	136.5	69	482	205	207	70	/	5	230	300	365
HFI6/15/3.5S	06-32-00-000	60	397	6	136.5	69	630	205	207	70	/	5	230	300	365
HFI8/18/1.8S	06-32-00-000	60	397	6	136.5	69	482	205	207	70	/	5	230	300	365
HFI8/18/3.5S	06-32-00-000	60	397	6	136.5	69	630	205	207	70	/	5	230	300	365
HFI8/20/1.8S	06-32-00-000	60	397	6	136.5	69	482	205	207	70	/	5	230	300	365
HFI8/20/3.5S	06-32-00-000	60	397	6	136.5	69	630	205	207	70	/	5	230	300	365
HFI10/25/5S	06-33-00-000	60	540	8	181.5	87	699	250	286	30	10	10	215	300	365
HFI5/12/1.8S	06-32-00-000	125	397	6	136.5	69	482	205	207	70	/	5	275	300	365
HFI6/15/1.8S	06-32-00-000	125	397	6	136.5	69	482	205	207	70	/	5	275	300	365
HFI6/15/3.5S	06-32-00-000	125	397	6	136.5	69	630	205	207	70	/	5	275	300	365
HFI6/15/5S	06-32-00-000	125	397	6	136.5	69	668	250	207	70	/	5	275	300	365
HFI6/15/7S	06-32-00-000	125	397	6	136.5	69	668	250	207	70	/	5	275	300	365
HFI8/20/1.8S	06-32-00-000	125	397	6	136.5	69	482	205	207	70	/	5	275	300	365
HFI8/20/3.5S	06-32-00-000	125	397	6	136.5	69	630	205	207	70	/	5	275	300	365
HFI8/20/5S	06-32-00-000	125	397	6	136.5	69	668	250	207	70	/	5	275	300	365
HFI8/20/7S	06-32-00-000	125	397	6	136.5	69	668	250	207	70	/	5	275	300	365



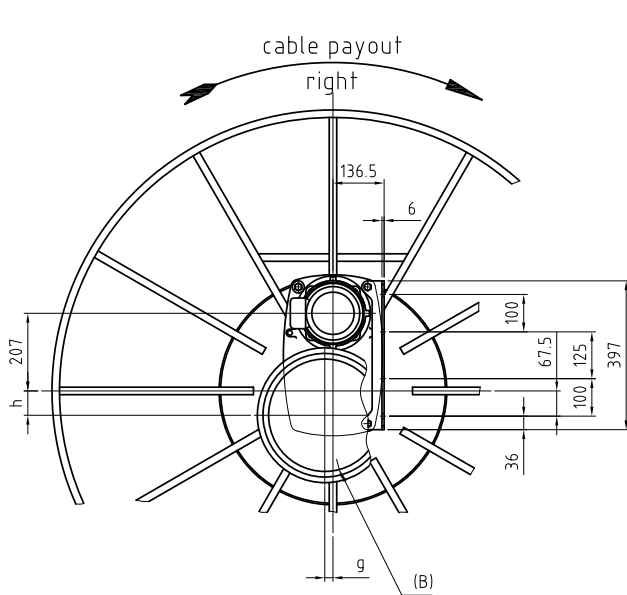
R= Cable entry to the rings
B= Cable entry to the brushes



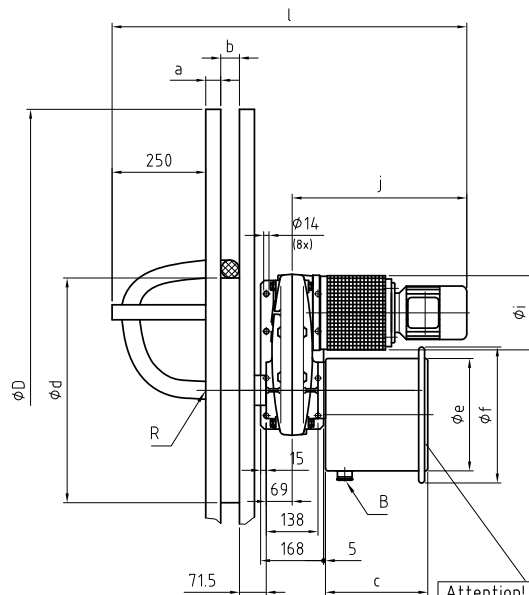
Attention!
Needed space for removing
the slip ring cover.

Drawing HF Series, Spiral Coiling

Type	Drawing	3+earth in A	ød	øD	a	b	c	e	f	g	øh	i	j	k	l
HFII8/20/7S	06-33-00-000	150	800	2000	100	Cable Diameter +5%	50	234	30	174	18	45	100	150	150
HFII8/20/78S	06-33-00-000	150	800	2000	100		50	234	30	174	18	45	100	150	150
HFII10/25/5S	06-33-00-000	150	1000	2500	100		60	234	30	174	18	45	100	150	150
HFII10/25/7S	06-33-00-000	150	1000	2500	100		60	234	30	174	18	45	100	150	150
HFII10/25/78S	06-33-00-000	150	1000	2500	100		60	234	30	174	18	45	100	150	150
HFII12/30/5S	06-33-00-000	150	1200	3000	125		80	234	30	174	18	45	100	150	150
HFII12/30/7S	06-33-00-000	150	1200	3000	125		80	234	30	174	18	45	100	150	150
HFII12/30/78S	06-33-00-000	150	1200	3000	125		80	234	30	174	18	45	100	150	150
HFII6/15/5S	06-33-00-000	220	600	1500	85		40	234	30	174	18	45	100	150	150
HFII6/15/7S	06-33-00-000	220	600	1500	85		40	234	30	174	18	45	100	150	150
HFII6/15/78S	06-33-00-000	220	600	1500	85		40	234	30	174	18	45	100	150	150
HFII10/22/5S	06-33-00-000	220	1000	2200	100		50	234	30	174	18	45	100	150	150
HFII10/22/7S	06-33-00-000	220	1000	2200	100		50	234	30	174	18	45	100	150	150
HFII10/22/78S	06-33-00-000	220	1000	2200	100		50	234	30	174	18	45	100	150	150
HFII10/25/5S	06-33-00-000	220	1000	2500	100		60	234	30	174	18	45	100	150	150
HFII10/25/78S	06-33-00-000	220	1000	2500	100		60	234	30	174	18	45	100	150	150
HFII12/30/5S	06-33-00-000	220	1200	3000	125		80	234	30	174	18	45	100	150	150
HFII12/30/7S	06-33-00-000	220	1200	3000	125		80	234	30	174	18	45	100	150	150
HFII12/30/78S	06-33-00-000	220	1200	3000	125		80	234	30	174	18	45	100	150	150



R= Cable entry to the rings
B= Cable entry to the brushes

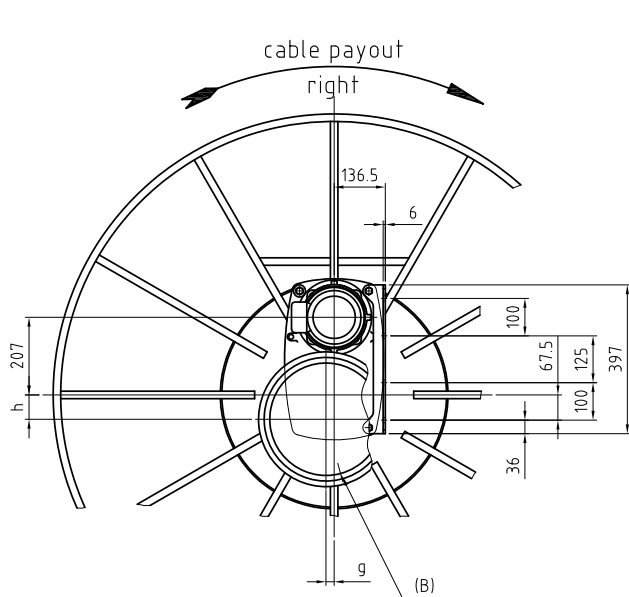


Attention!
Needed space for removing
the slip ring cover.

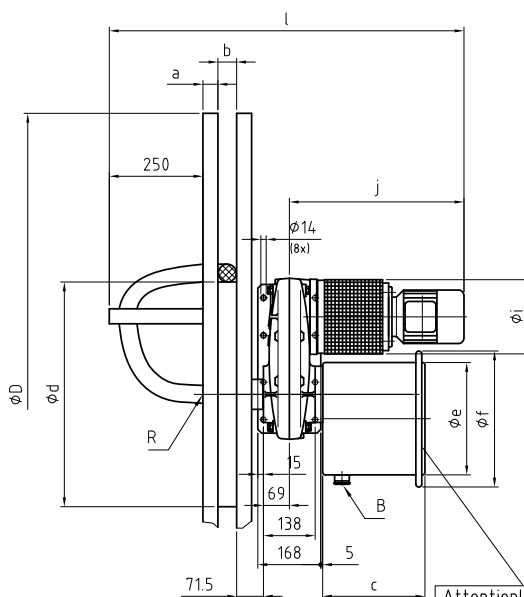


Drawing HF Series, Spiral Coiling

Type	Drawing	3+earth in A	m	n	o	p	q	ør	s	t	u	v	w	øx	øy
HFII8/20/7S	06-33-00-000	150	540	8	181.5	87	699	250	286	70	45	10	225	370	445
HFII8/20/78S	06-33-00-000	150	540	8	181.5	87	774	250	286	70	45	10	225	370	445
HFII10/25/5S	06-33-00-000	150	540	8	181.5	87	699	250	286	70	45	10	225	370	445
HFII10/25/7S	06-33-00-000	150	540	8	181.5	87	699	250	286	70	45	10	225	370	445
HFII10/25/78S	06-33-00-000	150	540	8	181.5	87	774	250	286	70	45	10	225	370	445
HFII12/30/5S	06-33-00-000	150	540	8	181.5	87	699	250	286	70	45	10	225	370	445
HFII12/30/7S	06-33-00-000	150	540	8	181.5	87	699	250	286	70	45	10	225	370	445
HFII12/30/78S	06-33-00-000	150	540	8	181.5	87	774	250	286	70	45	10	225	370	445
HFII6/15/5S	06-33-00-000	220	540	8	181.5	87	699	250	286	70	45	10	225	370	445
HFII6/15/7S	06-33-00-000	220	540	8	181.5	87	699	250	286	70	45	10	225	370	445
HFII6/15/78S	06-33-00-000	220	540	8	181.5	87	774	250	286	70	45	10	225	370	445
HFII10/22/5S	06-33-00-000	220	540	8	181.5	87	699	250	286	70	45	10	225	370	445
HFII10/22/7S	06-33-00-000	220	540	8	181.5	87	699	250	286	70	45	10	225	370	445
HFII10/22/78S	06-33-00-000	220	540	8	181.5	87	774	250	286	70	45	10	225	370	445
HFII10/25/5S	06-33-00-000	220	540	8	181.5	87	699	250	286	70	45	10	225	370	445
HFII10/25/78S	06-33-00-000	220	540	8	181.5	87	774	250	286	70	45	10	225	370	445
HFII12/30/5S	06-33-00-000	220	540	8	181.5	87	699	250	286	70	45	10	225	370	445
HFII12/30/7S	06-33-00-000	220	540	8	181.5	87	699	250	286	70	45	10	225	370	445
HFII12/30/78S	06-33-00-000	220	540	8	181.5	87	774	250	286	70	45	10	225	370	445



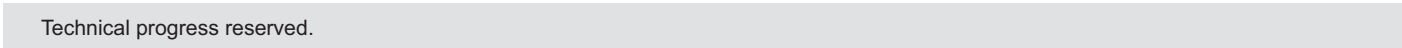
R= Cable entry to the rings
B= Cable entry to the brushes



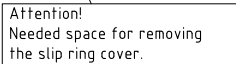
Attention!
Needed space for removing
the slip ring cover.



Drawing HF Series, Cylindrical Coiling															
Type	Drawing No.	3+earth in A	ød	øD	a	b	c	e	f	g	øh	i	j	k	l
HFI221/1.8S	06-30-00-000	36	220	450	70.5	150	20	168	15	138	14	36	67.5	100	125
HFI300/1.8S	06-30-00-000	36	300	550	73	190	25	168	15	138	14	36	67.5	100	125
HFI420/1.8S	06-30-00-000	36	420	680	75	240	25	168	15	138	14	36	67.5	100	125
HFI421/1.8S	06-30-00-000	36	420	770	75	240	25	168	15	138	14	36	67.5	100	125
HFI530/1.8S	06-30-00-000	36	530	900	76.5	310	30	168	15	138	14	36	67.5	100	125
HFI221/1.8S	06-30-00-000	42	220	450	70.5	150	20	168	15	138	14	36	67.5	100	125
HFI300/1.8S	06-30-00-000	42	300	550	73	190	25	168	15	138	14	36	67.5	100	125
HFI420/1.8S	06-30-00-000	42	420	680	75	240	25	168	15	138	14	36	67.5	100	125
HFI421/1.8S	06-30-00-000	42	420	770	75	240	25	168	15	138	14	36	67.5	100	125
HFI530/1.8S	06-30-00-000	42	530	900	76.5	310	30	168	15	138	14	36	67.5	100	125
HFI300/1.8S	06-30-00-000	60	300	550	73	190	25	168	15	138	14	36	67.5	100	125
HFI301/1.8S	06-30-00-000	60	300	550	73	290	25	168	15	138	14	36	67.5	100	125
HFI420/1.8S	06-30-00-000	60	420	680	75	240	25	168	15	138	14	36	67.5	100	125
HFI421/1.8S	06-30-00-000	60	420	770	75	240	25	168	15	138	14	36	67.5	100	125
HFI530/1.8S	06-30-00-000	60	530	900	76.5	310	30	168	15	138	14	36	67.5	100	125
HFII700/5S	06-31-00-000	60	700	1200	75.5	350	15	234	30	174	18	45	100	150	150
HFI421/1.8S	06-30-00-000	125	420	770	75	240	25	168	15	138	14	36	67.5	100	125
HFI421/3.5S	06-30-00-000	125	420	770	75	240	25	168	15	138	14	36	67.5	100	125
HFI530/1.8S	06-30-00-000	125	530	900	76.5	310	30	168	15	138	14	36	67.5	100	125
HFI530/3.5S	06-30-00-000	125	530	900	76.5	310	30	168	15	138	14	36	67.5	100	125
HFI531/1.8S	06-30-00-000	125	530	1000	76.5	310	30	168	15	138	14	36	67.5	100	125
HFI531/3.5S	06-30-00-000	125	530	1000	76.5	310	30	168	15	138	14	36	67.5	100	125
HFI531/5S	06-30-00-000	125	530	1000	76.5	310	30	168	15	138	14	36	67.5	100	125
HFII700/5S	06-31-00-000	150	700	1200	75.5	350	15	234	30	174	18	45	100	150	150
HFII531/5S	06-31-00-000	220	530	1000	87	310	30	234	30	174	18	45	100	150	150
HFII531/7S	06-31-00-000	220	530	1000	87	310	30	234	30	174	18	45	100	150	150
HFII700/5S	06-31-00-000	220	700	1200	75.5	350	15	234	30	174	18	45	100	150	150
HFII700/7S	06-31-00-000	220	700	1200	75.5	350	15	234	30	174					

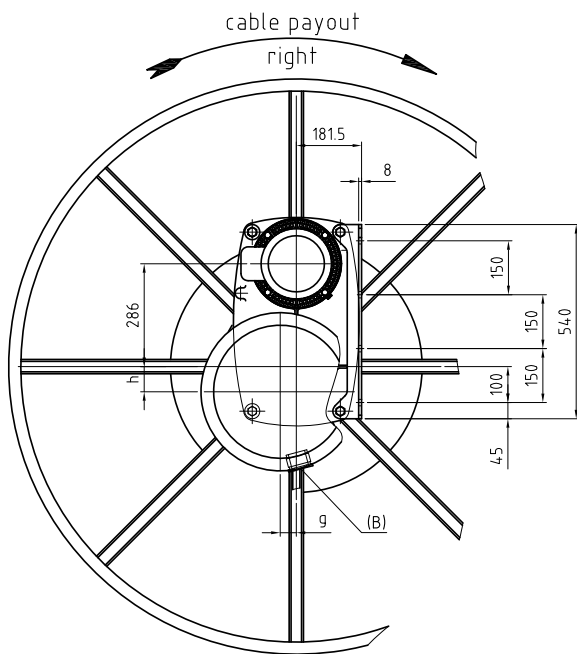


Drawing HF Series, Cylindrical Coiling															
Type	Drawing No.	3+earth in A	m	n	o	p	q	ø r	s	t	u	v	w	ø x	ø y
HFI221/1.8S	06-30-00-000	36	397	6	136.5	69	482	205	207	70	/	5	225	300	365
HFI300/1.8S	06-30-00-000	36	397	6	136.5	69	482	205	207	70	/	5	225	300	365
HFI420/1.8S	06-30-00-000	36	397	6	136.5	69	482	205	207	70	/	5	225	300	365
HFI421/1.8S	06-30-00-000	36	397	6	136.5	69	482	205	207	70	/	5	225	300	365
HFI530/1.8S	06-30-00-000	36	397	6	136.5	69	482	205	207	70	/	5	225	300	365
HF1221/1.8S	06-30-00-000	42	397	6	136.5	69	482	205	207	70	/	5	225	300	365
HFI300/1.8S	06-30-00-000	42	397	6	136.5	69	482	205	207	70	/	5	225	300	365
HFI420/1.8S	06-30-00-000	42	397	6	136.5	69	482	205	207	70	/	5	225	300	365
HFI421/1.8S	06-30-00-000	42	397	6	136.5	69	482	205	207	70	/	5	225	300	365
HFI530/1.8S	06-30-00-000	42	397	6	136.5	69	482	205	207	70	/	5	225	300	365
HFI300/1.8S	06-30-00-000	60	397	6	136.5	69	482	205	207	70	/	5	225	300	365
HFI301/1.8S	06-30-00-000	60	397	6	136.5	69	482	205	207	70	/	5	225	300	365
HFI420/1.8S	06-30-00-000	60	397	6	136.5	69	482	205	207	70	/	5	225	300	365
HFI421/1.8S	06-30-00-000	60	397	6	136.5	69	482	205	207	70	/	5	225	300	365
HFI530/1.8S	06-30-00-000	60	397	6	136.5	69	482	205	207	70	/	5	225	300	365
HFII700/5S	06-31-00-000	60	540	8	181.5	87	699	250	286	30	10	10	215	300	365
HFI421/1.8S	06-30-00-000	125	397	6	136.5	69	482	205	207	70	/	5	275	300	365
HFI421/3.5S	06-30-00-000	125	397	6	136.5	69	630	205	207	70	/	5	275	300	365
HFI530/1.8S	06-30-00-000	125	397	6	136.5	69	482	205	207	70	/	5	275	300	365
HFI530/3.5S	06-30-00-000	125	397	6	136.5	69	630	205	207	70	/	5	275	300	365
HFI531/1.8S	06-30-00-000	125	397	6	136.5	69	482	205	207	70	/	5	275	300	365
HFI531/3.5S	06-30-00-000	125	397	6	136.5	69	630	205	207	70	/	5	275	300	365
HFI531/5S	06-30-00-000	125	397	6	136.5	69	668	250	207	70	/	5	275	300	365
HFII700/5S	06-31-00-000	150	540	8	181.5	87	699	250	286	70	45	10	225	370	445
HFII531/5S	06-31-00-000	220	540	8	181.5	87	699	250	286	70	45	10	225	370	445
HFII531/7S	06-31-00-000	220	540	8	181.5	87	699	250	286	70	45	10	225	370	445
HFII700/5S	06-31-00-000	220	540	8	181.5	87	699	250	286	70	45	10	225	370	445
HFII700/7S	06-31-00-000	220	540	8	181.5	87	699	250	286	70	45	10	225	370	445

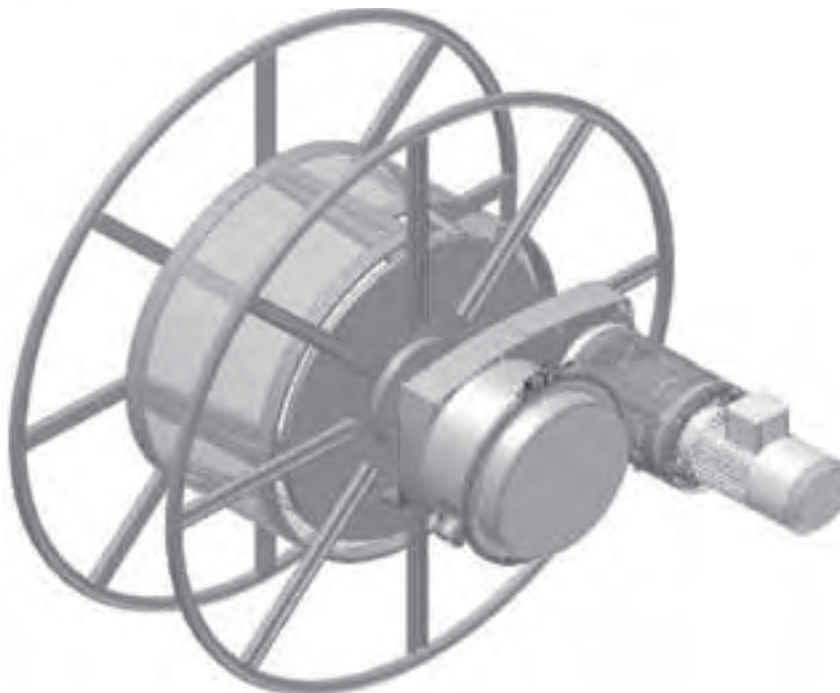
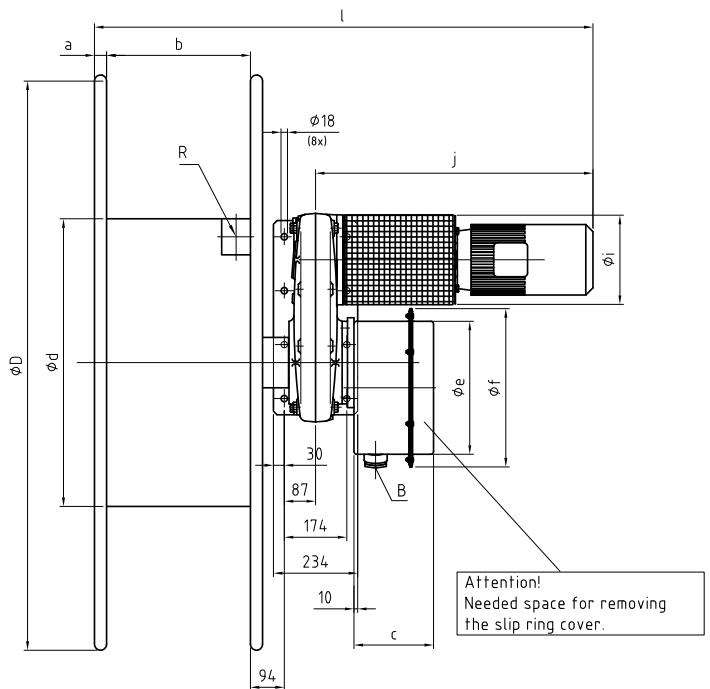


Drawing HF Series, Cylindrical Coiling

Type	Drawing No.	3+earth in A	ød	øD	a	b	c	e	f	g	øh	i	j	k	l
HFII800/5S	06-34-00-000	60	800	1600	94	400	34	234	30	174	18	45	100	150	150
HFII800/5S	06-34-00-000	150	800	1600	94	400	34	234	30	174	18	45	100	150	150
HFII800/7S	06-34-00-000	150	800	1600	94	400	34	234	30	174	18	45	100	150	150
HFII1000/5S	06-34-00-000	150	1000	1800	94	400	34	234	30	174	18	45	100	150	150
HFII1000/7S	06-34-00-000	150	1000	1800	94	400	34	234	30	174	18	45	100	150	150
HFII1200/5S	06-34-00-000	150	1200	2000	94	400	34	234	30	174	18	45	100	150	150
HFII1200/7S	06-34-00-000	150	1200	2000	94	400	34	234	30	174	18	45	100	150	150
HFII800/5S	06-34-00-000	220	800	1600	94	400	34	234	30	174	18	45	100	150	150
HFII800/7S	06-34-00-000	220	800	1600	94	400	34	234	30	174	18	45	100	150	150
HFII800/78S	06-34-00-000	220	800	160	94	400	34	234	30	174	18	45	100	150	150

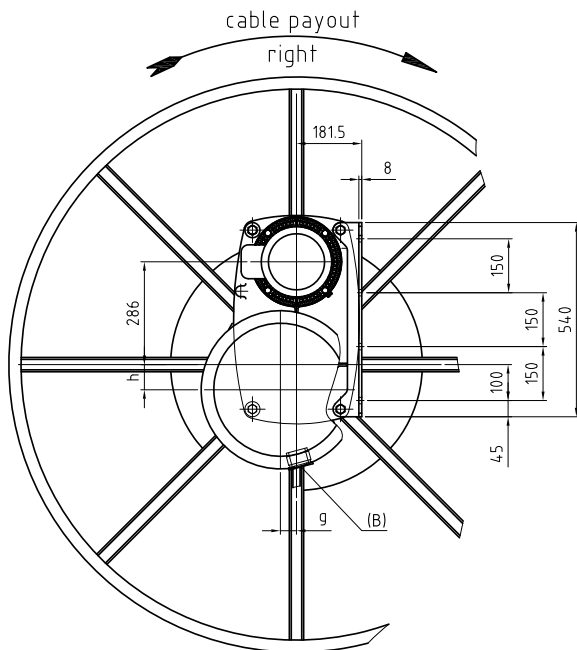


R= Cable entry to the rings
B= Cable entry to the brushes



Drawing HF Series, Cylindrical Coiling

Type	Drawing No.	3+earth in A	m	n	o	p	q	ør	s	t	u	v	w	øx	øy
HFII800/5S	06-34-00-000	60	540	8	181.5	87	699	250	286	30	10	10	215	300	365
HFII800/5S	06-34-00-000	150	540	8	181.5	87	699	250	286	70	45	10	225	370	445
HFII800/7S	06-34-00-000	150	540	8	181.5	87	699	250	286	70	45	10	225	370	445
HFII1000/5S	06-34-00-000	150	540	8	181.5	87	699	250	286	70	45	10	225	370	445
HFII1000/7S	06-34-00-000	150	540	8	181.5	87	699	250	286	70	45	10	225	370	445
HFII1200/5S	06-34-00-000	150	540	8	181.5	87	699	250	286	70	45	10	225	370	445
HFII1200/7S	06-34-00-000	150	540	8	181.5	87	699	250	286	70	45	10	225	370	445
HFII800/5S	06-34-00-000	220	540	8	181.5	87	699	250	286	70	45	10	225	370	445
HFII800/7S	06-34-00-000	220	540	8	181.5	87	699	250	286	70	45	10	225	370	445
HFII800/78S	06-34-00-000	220	540	8	181.5	87	774	250	286	70	45	10	225	370	445



R= Cable entry to the rings
B= Cable entry to the brushes

