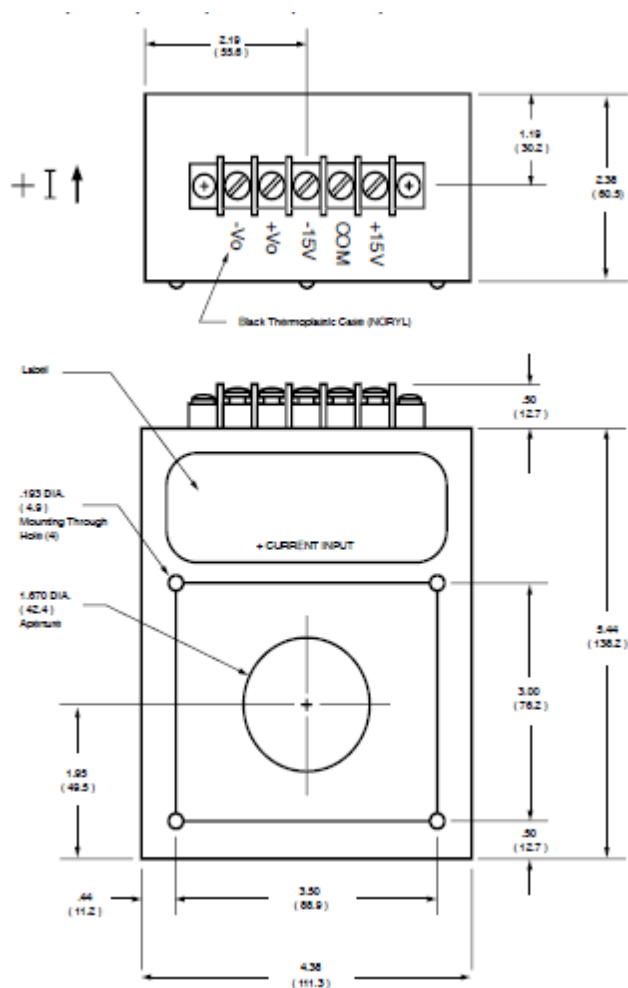


Current sensors



The IF series Hall effect current sensors accurately measure DC and AC currents and provide electrical isolation between the output of the sensor and the current carrying conductor.





Current sensors

IF series

Specifications

Model:	IF-100	IF-250	IF-1000	IF-3000
Full scale DC or AC peak	100 A	250 A	1000 A	3000 A
Full scale output	10 V			
Frequency response	DC to 1 kHz			
Response time	< 150 μ s			
Supply voltage	15 Vdc			
Max. positive supply current	50 mA			
Max negative supply current	10 mA			
Output sensitivity	100 mV/A	40 mV/A	10 mV/A	3.3 mV/A
Output linearity	0.5 % FS	0.5 % FS	0.5 % FS	0.6 % FS
Calibration point	0.5 % RDG			
Typical zero current offset	10 mV			
Maximum zero current offset	50 mV			
Maximum hysteresis of offset	200 mV	100 mV	25 mV	15 mV
Minimum load resistance	> 2 k ohms			
Typical offset drift with temperature	1 mV / $^{\circ}$ C			
Max. offset drift with temperature	2 mV / $^{\circ}$ C			
Max. sensitivity change	0.03%			
Typical sensitivity drift with temperature	0.015 % / $^{\circ}$ C			
Max. sensitivity drift with temperature	0.02 % / $^{\circ}$ C			
Dielectric test	2.5 kV			
Output short or open	No damage			
Operating temperature	-30 to 75 $^{\circ}$ C			
Storage temperature	-40 to 85 $^{\circ}$ C			
Package	Flame retardant plastic case			
Aperture opening	1.67 in. (42.4 mm)			
Weight	3 lbs. and 6 oz. (1.5 kg)			

Note: Due to continuous process improvement,
specifications are subject to change without notice