

Denominazione codice prodotto

Ordering code



PB

014

030

F012

6

MODELLO *Model*

SERIE *Series*

014
022
031
034
047
060
110
170

NUMERO DI PIASTRE *Number of plates*

006
010
020
030
040
050
060
070
080
090
100
110
120
130
140
150
160
170
180

CONNESSIONI *Connection Type*

1/2" BSP Femmina (PB014 - PB022 - PB034)
Internal Thread 1/2" BSP

1" BSP Femmina (PB31 - PB047 - PB060)
Internal Thread 1" BSP

2" BSP Maschio (PB110 - PB170)
External Thread 2" BSP

F012

F100

M200



EMMEGI
HEAT-EXCHANGERS



PB110

Dimensioni *Dimensions*

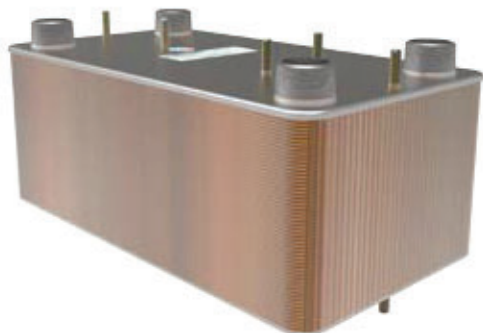
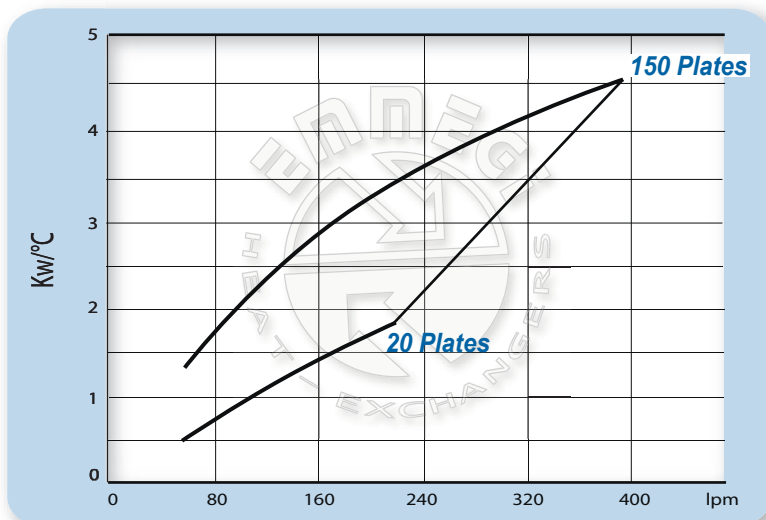
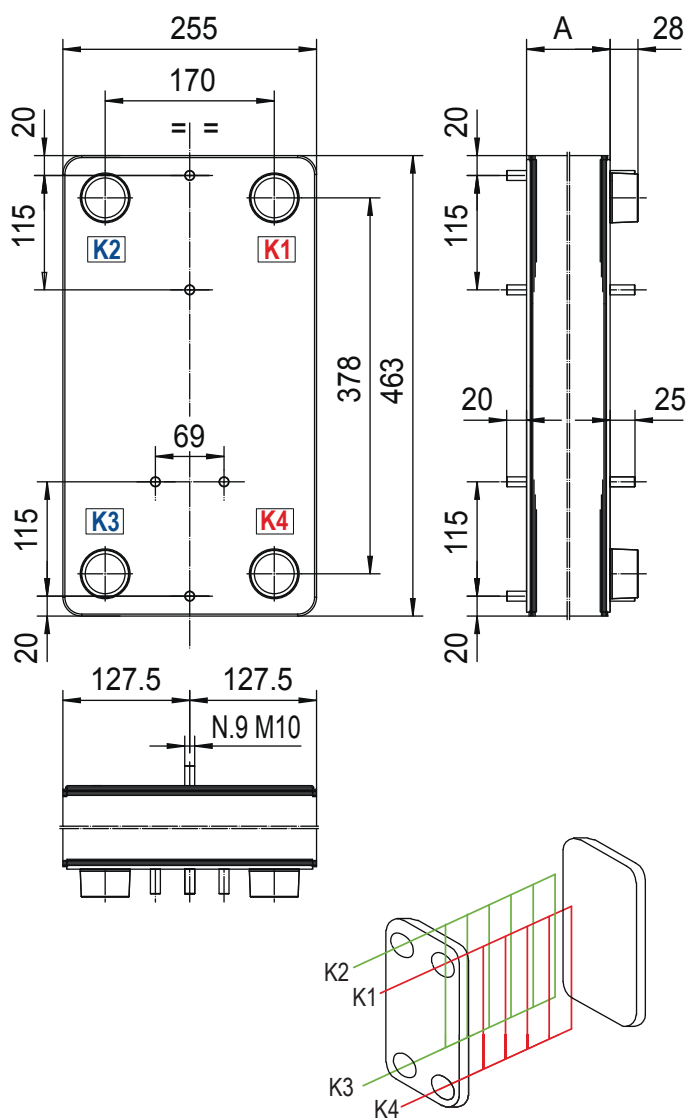


Diagramma rendimento *Performance diagram - ISO VG46 @50°C*



Rapporto portata olio/acqua 2:1 - flow ratio 2:1

Per informazioni inerenti la perdita di carico contattare l' UTEC EMMEGI.
For pressure drop information please contact EMMEGI's technical department.



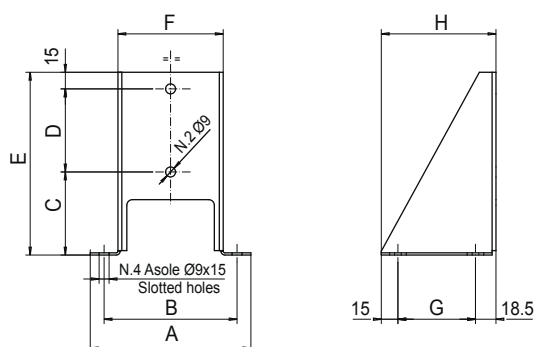
Condizioni di esercizio Working Conditions		Materiali Utilizzati Materials	
Massima Temperatura Max. Working Pressure	230°C	Piastre Plate	Aisi 316
Min. Working Temperature	-10°C	Attacchi Connection	Aisi 316
Max. Working Pressure	23 bar	Brasatura Brazing Material	Cu 99,95%

Collegamenti Standard Standard of Connection Location	Connessioni Connection Types
K1 / K4 - Ingresso/uscita caldo K1 / K4 - Inlet/Outlet Hot Side	G 2" Maschio External Thread G 2"
K3 / K2 - Ingresso/uscita freddo K3 / K2 - Inlet/Outlet Cold Side	G 2" Maschio External Thread G 2"
A richiesta connessioni speciali Special connections on request	

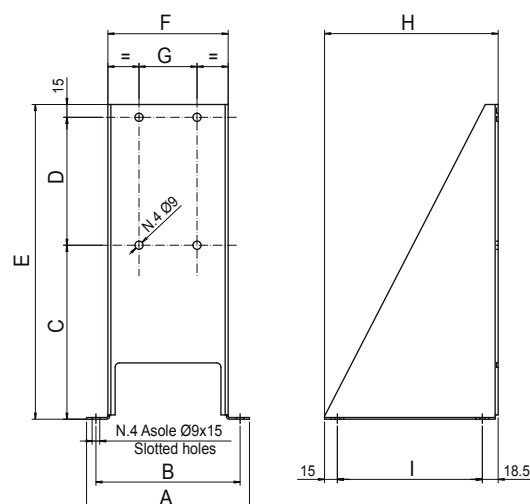
N° Piastre Plate No.	A (mm)	Peso (Kg) Weight (Kg)	Capacità per circuito lt Channel Volume
20	58	17	1.62
30	82	21	2.43
40	106	25	3.24
50	130	29	4.05
60	154	33	4.86
70	178	37	5.67
80	202	41	6.48
90	226	45	7.29
100	250	49	8.1
110	274	53	8.91
120	298	57	9.72
130	322	61	10.53
140	346	65	11.34
150	370	69	12.15

STAFFE DI FISSAGGIO SERIE PB (ARTICOLO OPTIONAL) assemblaggio a cura del cliente

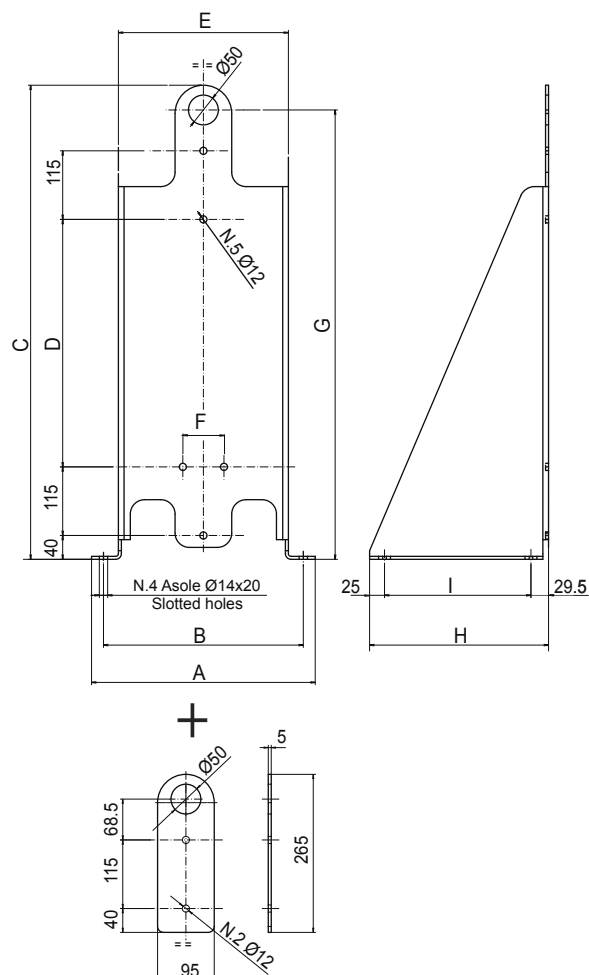
PB Series supporting frame (OPTIONAL) the assembling is at customer care



MODELLO MODEL	Dimensioni Dimensions									Staffe di fissaggio Supporting frame
	A	B	C	D	E	F	G	H		P/N
PB014	145	120	75	75	165	95	70	103.5		0533920



MODELLO MODEL	Dimensioni Dimensions									Staffe di fissaggio Supporting frame
	A	B	C	D	E	F	G	H	I	P/N
PB022	145	120	87	150	252	95	42	103.5	70	0533930
PB031	191	169	80	150	245	141	68	203.5	170	0533940
PB034	145	120	173	150	338	95	42	103.5	70	0533950
PB047	191	169	144	150	309	141	68	203.5	170	0533960
PB060	191	169	204	150	369	141	68	203.5	170	0533970



MODELLO MODEL	Dimensioni Dimensions									Staffe di fissaggio Supporting frame
	A	B	C	D	E	F	G	H	I	P/N
PB110	375	335	573	193	285	69	531.5	300	245.5	0533980
PB170	375	335	795	415	285	69	753.5	300	245.5	0533990

