


Applications:

- Instrumentation. Laboratory.
- Burner pilot for combustible gases and liquids.
- Welding equipment. Humidifiers.
- Dental equipment. Vacuum systems.
- Laundry and dry cleaning machines.
- Heating with low or high pressure steam

Main characteristics

Normally closed and normally open.
Direct action. No minimum differential pressure to operate.
1/4" BSP or NPT threaded connections.
Brass, iron, stainless steel body.
Core tube AISI 304 and 316.
Plunger and fixed core AISI 430 F.
Shading coil: copper, silver or aluminium
Shape A DIN 43650 connection encapsulated coils.
IP65 and NEMA 4 protection.
Approximate weight: 0.5 kg. (1.1Lb)

Options:

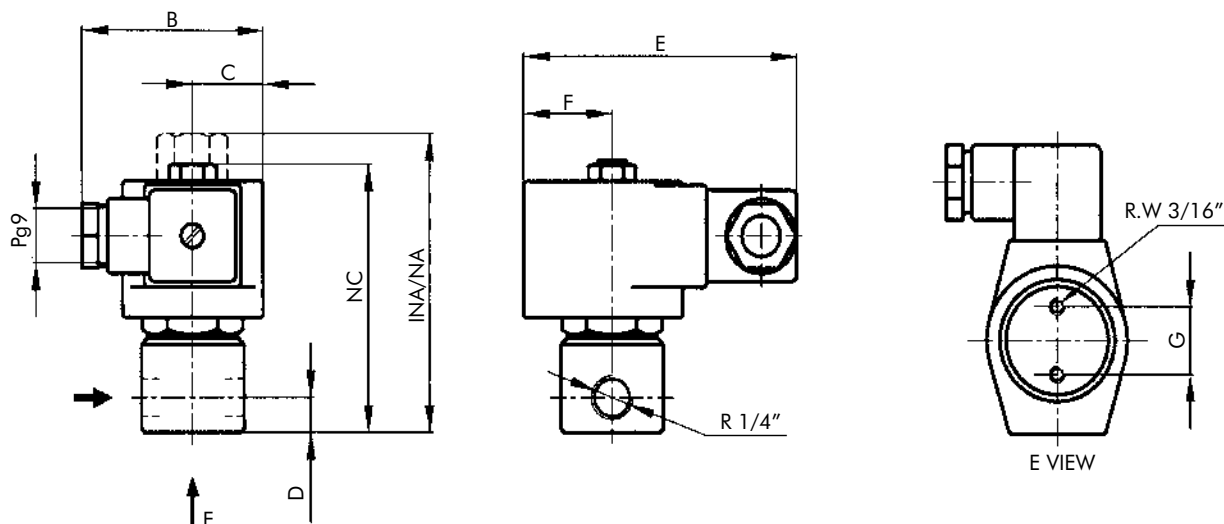
- Energized coil indicator light.
- Explosion and / or weather proof coils and housings.
- Manual operator.

Technical specifications - Brass body

| Orifice Ø | | Flow factor | | Δp (a) maximum | | Maximum temp. and catalog N° according to seat material | | | | |
|---|------|----------------|------|-------------------|-------|---|----------------|-----------------|-----------------|-----------------|
| mm | ins. | Kv | Cv | bar | psi | Buna “N” | Neoprene | EPDM | FKM | PTFE |
| | | | | | | 80 °C / 176 °F | 80 °C / 176 °F | 145 °C / 293 °F | 150 °C / 302 °F | 180 °C / 356 °F |
| Normally closed | | | | | | | | | | |
| 1.25 | .049 | 0.05 | 0.06 | * | * | 1327BA122 | 1327BN122 | 1327BE122 | 1327BV122 | 1327BT122 |
| 1.75 | .068 | 0.09 | 0.11 | 35 | 525 | 1327BA172 | 1327BN172 | 1327BE172 | 1327BV172 | 1327BT172 |
| 2.25 | .088 | 0.13 | 0.15 | 20 | 300 | 1327BA222 | 1327BN222 | 1327BE222 | 1327BV222 | 1327BT222 |
| 3.00 | .118 | 0.26 | 0.30 | 10 | 150 | 1327BA302 | 1327BN302 | 1327BE302 | 1327BV302 | 1327BT302 |
| 4.00 | .157 | 0.43 | 0.50 | 5 | 75 | 1327BA402 | 1327BN402 | 1327BE402 | 1327BV402 | 1327BT402 |
| 5.00 | .197 | 0.60 | 0.70 | 3 | 45 | 1327BA502 | 1327BN502 | 1327BE502 | 1327BV502 | - |
| 5.25 | .206 | 0.65 | 0.76 | 2.2 | 33 | 1327BA522 | 1327BN522 | 1327BE522 | 1327BV522 | - |
| (a) Advise: when using direct current (DC), a 25% reduction on the maximum operating pressure differential is expected. | | | | | | * With PTFE seat 100 bar/1500 psi. Other seats 70 bar/1500 psi. | | | | |
| Normally open | | | | | | | | | | |
| 1.25 | .049 | 0.05 | 0.06 | 50** | 750** | 1327BA122NA | 1327BN122NA | 1327BE122NA | 1327BV122NA | 1327BT122INA |
| 1.75 | .068 | 0.09 | 0.11 | 20** | 300** | 1327BA172NA | 1327BN172NA | 1327BE172NA | 1327BV172NA | 1327BT172INA |
| 2.25 | .088 | 0.13 | 0.15 | 12** | 180** | 1327BA222NA | 1327BN222NA | 1327BE222NA | 1327BV222NA | 1327BT222INA |
| 2.50 | .098 | 0.17 | 0.20 | 10 | 150 | 1327BA252NA | 1327BN252NA | 1327BE252NA | 1327BV252NA | - |
| 3.00 | .118 | 0.26 | 0.30 | 10 | 150 | 1327BA302INA | 1327BN302INA | 1327BE302INA | 1327BV302INA | 1327BT302INA |
| 4.00 | .157 | 0.43 | 0.50 | 5 | 75 | 1327BA402INA | 1327BN402INA | 1327BE402INA | 1327BV402INA | 1327BT402INA |

** With PTFE seat, maximum pressure 10bar / 150psi.

General dimensions 1327



| NC | NA | INA | B | C | D | E | F | G |
|----|----|-----|----|----|----|----|----|----|
| 80 | 89 | 102 | 57 | 22 | 10 | 85 | 27 | 20 |

Measurements: mm

| NC | NA | INA | B | C | D | E | F | G |
|------|------|-----|------|------|------|------|------|------|
| 3.15 | 3.50 | 4 | 2.24 | 0.87 | 0.39 | 3.35 | 1.06 | 0.79 |

Measurements: ins.

Special constructions

Stainless steel body.

- AISI 304: change letter **B** for **S** in the catalog N^o.
Example: 1327ST302
- AISI 316: change letter **B** for **I** in the catalog N^o.
Example: 1327IT302.

| Options | Prefix | Suffix | Examples |
|--|------------|------------|--------------------|
| Water, weather and saline corrosion proof coils. | YC | | YC1327BA302 |
| Explosion and weather proof coils. | ZC | | ZC1327BA302 |
| Weather proof housing. | Y | | Y1327BA302 |
| Explosion and weather proof housing. | Z | | Z1327BA302 |
| Manual operator: on the main orifice (*) | | - M | 1327BA302-M |
| NPT connections | | T | 1327BA122T |
| Energized coil indicator light | See coils. | | |

Coil characteristics

| Electric power supply | Coil type | Power W | VA (volt-ampere) | | Maximum temperature | | Available tensions |
|-----------------------|-----------|---------|------------------|---------|---------------------|-----|--------------------|
| | | | Inrush | Holding | ° C | ° F | |
| AC 50 Hz | MF11C | 11 | 40 | 22 | 155 | 311 | 1 |
| | MH11C | 11 | 40 | 22 | 180 | 356 | 1 |
| AC 60 Hz | MF13C | 13 | 45 | 27 | 155 | 311 | 2 |
| | MH13C | 13 | 45 | 27 | 180 | 356 | 2 |
| DC | MH19C | 19 | 19 | 19 | 180 | 356 | 3 |

1-(12,24,110,220,240)V 2-(12,24,110,120,220,240)V 3-(12,24,110,220)V

(*) Up to 20 bar - 300 psi. PTFE seat not available. Only NC versions.

Recommendations for installation

Place a strainer upstream the valve with a porosity $\leq 100\mu$. Any mounting position.
The valve allows > output pressure than input pressure, but in these cases watertightness is not guaranteed when it is closed.

Application according to seat material

| Seat material | Buna "N" | Neoprene | EPDM | FKM | PTFE |
|---------------------|--|--|----------------------------------|--|------------------------------------|
| Maximum temperature | +80 °C / 176 °F | +80 °C / 176 °F | +145 °C / 293 °F | +150 °C / 302 °F | +180 °C / 356 °F |
| Uses | Water, air, light oils. Neutral gases. Kerosene, low and medium vacuum | Oxygen, alcohol, argon, other non-corrosive light gases and liquids, Freon 12. | Water steam, hot water, acetone. | Benzene, naphta, aromatics, etc. hot gases, high vacuum, diesel oil. | Steam, hot oils, corrosive fluids. |