


1335 Series
Main characteristics

Normally closed and normally open.
BSP or NPT threaded connections.
Forged brass, stainless steel body.
Plastic or metal core diaphragm.
Core tube SS. 304 and 316.
Plunger and fixed core: SS. 430 F.
Shading coil: copper, silver or aluminium.

Applications:

- Washing machines.
- Lubricated air, hot air, dry air, etc.
- Oxygen and acetylene equipments.
- Fuel oil and gas burners.
- Vacuum systems.

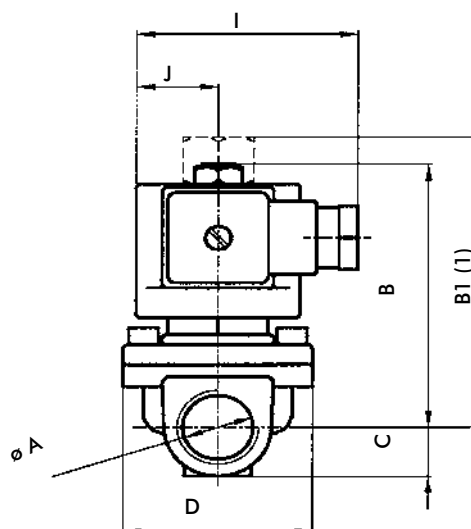
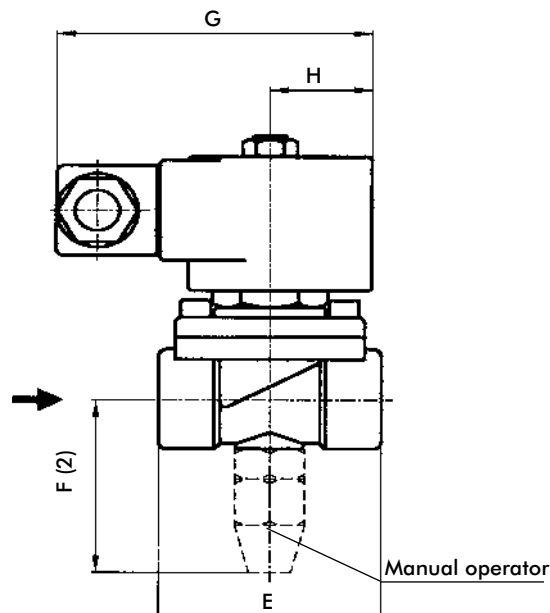
Encapsulated plug-in coils. Shape A DIN 43650 connection.
IP65 and NEMA4 Protection.

Options:

- Energized coil indicator light.
- Explosion and / or weather coils and housings.
- Manual operator.


Technical specifications - Brass body

Pipe size ins.	Orifice size		Flow factor		Weight		Pressure minimum		Pressure maximum AC		Pressure maximum DC		Maximum temp. and catalog N° according to seat material.			
													Buna "N"	Neoprene	EPDM	FKM
	mm	ins	Kv	Cv	Kg	Lb	bar	psi	bar	psi	bar	psi	80 °C / 176 °F	80 °C / 176 °F	+145 °C / 293 °F	+150 °C / 302 °F
Direct acting-Normally closed																
3/8"	14	0.55	2.35	2.75	0.8	1.75	0	0	0.2	3	0.1	1.5	1335BA3D	1335BN3D	1335BE3D	1335BV3D
1/2"	14	0.55	2.65	3.1	0.8	1.75	0	0	0.2	3	0.1	1.5	1335BA4D	1335BN4D	1335BE4D	1335BV4D
3/4"	18	0.71	4.3	5.03	0.9	2.0	0	0	0.2	3	0.1	1.5	1335BA6D	1335BN6D	1335BE6D	1335BV6D
3/8"	8	0.31	1.7	2	0.8	1.75	0	0	1	15	0.7	10	1335BA083D	1335BN083D	1335BE083D	1335BV083D
1/2"	8	0.31	1.7	2	0.8	1.75	0	0	1	15	0.7	10	1335BA084D	1335BN084D	1335BE084D	1335BV084D
3/4"	8	0.31	1.7	2	0.9	2	0	0	1	15	0.7	10	1335BA086D	1335BN086D	1335BE086D	1335BV086D
Floating diaphragm-Normally closed																
3/8"	14	0.55	2.35	2.75	0.8	1.75	0.1	1.5	10	150	6	90	1335BA3	1335BN3	1335BE3	1335BV3
1/2"	14	0.55	2.65	3.1	0.8	1.75	0.1	1.5	10	150	6	90	1335BA4	1335BN4	1335BE4	1335BV4
3/4"	18	0.71	4.3	5.03	0.9	2	0.1	1.5	10	150	6	90	1335BA6	1335BN6	1335BE6	1335BV6
Hung diaphragm-Normally closed																
3/8"	14	0.55	2.35	2.75	0.8	1.75	0	0	7	105	6	90	1335BA3A	1335BN3A	1335BE3A	1335BV3A
1/2"	14	0.55	2.65	3.1	0.8	1.75	0	0	7	105	6	90	1335BA4A	1335BN4A	1335BE4A	1335BV4A
3/4"	18	0.71	4.3	5.03	0.8	2	0	0	7	105	6	90	1335BA6A	1335BN6A	1335BE6A	1335BV6A
Floating diaphragm-Normally open																
3/8"	14	0.55	2.35	2.75	0.8	1.75	0.1	1.5	10	150	10	150	1335BA3INA	1335BN3INA	1335BE3INA	1335BV3INA
1/2"	14	0.55	2.65	3.1	0.8	1.75	0.1	1.5	10	150	10	150	1335BA4INA	1335BN4INA	1335BE4INA	1335BV4INA
3/4"	18	0.71	4.3	5.03	0.9	2	0.1	1.5	10	150	10	150	1335BA6INA	1335BN6INA	1335BE6INA	1335BV6INA
Direct acting-Normally open																
3/8"	8	0.31	1.7	2	0.8	1.75	0	0	1	15	1	15	1335BA083DINA	1335BN083DINA	1335BE083DINA	1335BV083DINA
1/2"	8	0.31	1.7	2	0.8	1.75	0	0	1	15	1	15	1335BA084DINA	1335BN084DINA	1335BE084DINA	1335BV084DINA
3/4"	8	0.31	1.7	2	0.9	2	0	0	1	15	1	15	1335BA086DINA	1335BN086DINA	1335BE086DINA	1335BV086DINA
3/8"	14	0.55	2.35	2.75	0.8	1.75	0	0	0.2	3	0.1	1.5	1335BA3DINA	1335BN3DINA	1335BE3DINA	1335BV3DINA
1/2"	14	0.55	2.65	3.1	0.8	1.75	0	0	0.2	3	0.1	1.5	1335BA4DINA	1335BN4DINA	1335BE4DINA	1335BV4DINA
3/4"	18	0.71	4.3	5.03	0.9	2	0	0	0.2	3	0.1	1.5	1335BA6DINA	1335BN6DINA	1335BE6DINA	1335BV6DINA

General dimensions 1335 (1) Normally open version - (2) Manual operator (optional)


	øA	B	B1	C	D	E	F	G	H	I	J
Brass	R 3/8"	80	88	15	51	60	53	85	26	57	22
	R 1/2"										
	R 3/4"										
AISI 304	R 1/2"	82	90	17	58	72	55				
	R 3/4"										

Measurements: mm

	øA	B	B1	C	D	E	F	G	H	I	J
Brass	R 3/8"	3.15	3.46	0.59	2.01	2.36	2.09	3.35	1.02	2.24	0.87
	R 1/2"										
	R 3/4"										
AISI 304	R 1/2"	3.23	3.54	0.67	2.28	2.83	2.17				
	R 3/4"										

Measurements: ins.

Special constructions

- Investment cast AISI316 Body (only 1/2" and 3/4").
Change letter **B** for **I** to Catalog N°.
Example: 1335IV4; 1335IV6.
- Vacuum systems: consult **JEFFERSON**.

Coil characteristics

Electric power supply	Coil type	Power W	VA (volt-ampere)		Maximum temperature		Available tensions
			Inrush	Holding	° C	° F	
AC 50 Hz	MF11C	11	47	18	155	311	1
	MH11C	11	47	18	180	356	1
AC 60 Hz	MF13C	13	57	23	155	311	2
	MH13C	13	57	23	180	356	2
DC	MH19C	19	19	19	180	356	3

1-(12,24,110,220,240)V 2-(12,24,110,120,220,240)V 3-(12,24,110,220)V

Options	Prefix	Suffix	Examples
Water, weather and saline corrosion proof coils.	YC		YC1335BN4A
Explosion and weather proof coils.	ZC		ZC1335BA4A
Weather proof housing.	Y		Y1335BA4A
Explosion and weather proof housing.	Z		Z1335BA4A
Manual operator: on the main orifice	(*)	- M	1335BA4A-M
NPT connections		T	1335BA4AT
Oxygen		-O	1335BN43-O
Energized coil indicator light	See coils.		

(*) Only NC versions

Recommendations for installation

Place a strainer upstream the valve with a porosity $\leq 100\mu$.
Install the valve in any position, preferably over horizontal pipeline with the coil upright.

Application according to seat material.

Seat material	Buna "N"	Neoprene	EPDM	FKM
Maximum temperature	+80 °C / 176 °F	+80 °C / 176 °F	+145 °C / 293 °F	+150 °C / 302 °F
Uses	Water, air, light oils. Neutral gases. Kerosene. Low and medium vacuum	Oxygen, alcohol, argon, other non-corrosive light gases and liquids. Freon 12.	Water steam, hot water, acetone.	Benzene, naphta, aromatics, benzene, etc. Hot gases. High vacuum. Diesel oil.