

# Solenoid operated valves pilot operated poppet type

## 2-way normally closed

## Common cavity, Size 08

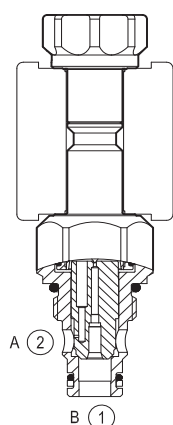
VEI-8A-06-NC

OD.15 - X - Y - Z - S

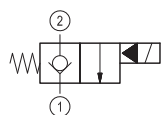
**RE 18323-02**

Edition: 03.2016

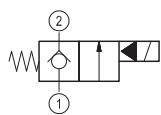
Replaces: 10.2013



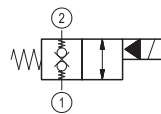
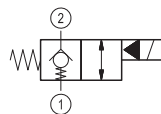
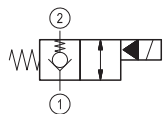
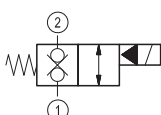
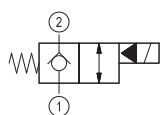
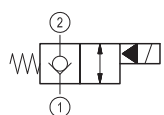
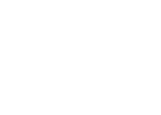
## ▼ Version 1



## ▼ Version 2

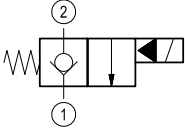
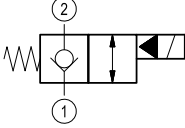
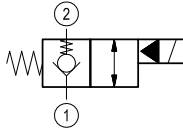
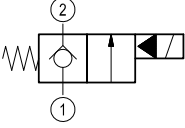
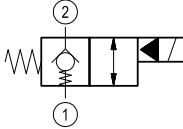
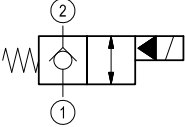
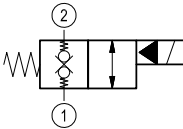
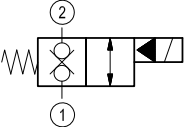
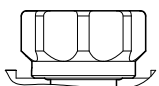
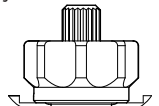


## ▼ Version 3

**Technical data**

General		
Weight		0.16 kg (0.35 lbs)
Installation orientation		Optional
Ambient temperature range		-30 to 60 °C (-22 to 140 °F)
Hydraulic		
Max. operating pressure		350 bar (5000 psi)
Max. proof pressure		420 bar (6000 psi)
Flow range		0.5 - 40 l/min (0.1 - 11 gpm)
Fatigue cycle life		1 million cycles at 350 bar
Max. internal leakage		20 drops/min.
Fluid temperature range		-20 to 80 °C (-4 to 176 °F)
Fluids: Mineral-based or synthetics with lubricating properties at viscosities of 20 to 380 mm <sup>2</sup> /s (cSt)		
Installation torque		39 - 51 Nm (29 - 38 ft-lbs)
Recommended degree of fluid contamination		Nominal value max. 10 µm (NAS 8) ISO 4406 19/17/14
MTTFd		150 years see RE 18350-51
Cavity		CA-08A-2N see 18325-70
Lines bodies and standard assemblies		Please refer to section "Hydraulic integrated circuit" or consult factory
Seal kit – version 1	code material no.	RG08A2010520100 R901101437
Seal kit – version 2-3	code material no.	RG08A2010530100 R901101544
Seal kit coil	code material no.	RG12A1PNBR7010 R934003958
Other technical data		See data sheet 18350-50
Electrical		
Type of voltage		DC voltage
Coil type		S8-356 see 18325-90
Supply voltage		See data sheet 18325-90
Nominal voltage		± 10%
Power consumption		20 W
Duty cycle coil		See characteristic curves %
Type of protection		See data sheet 18325-90
Note: Coils must be ordered separately		

**Ordering code**

OD.15	X	18	Y	Z
Solenoid operated valves pilot operated poppet type 2-way normally closed				
monodirectional type 	<b>01</b>			<b>S0</b> = Tube not welded
bidirectional type 	<b>05</b>			<b>S8</b> = Tube not welded with extra spring  for X= 05
monodirectional type 	<b>09</b>			 for X= 03
bidirectional type 	<b>03</b>			 for X= 31
bidirectional type 	<b>31</b>			standard type <b>3A</b> 
				knob style manual override <b>3D</b> 
<b>18</b> = Common cavity: CA-08A-2N				

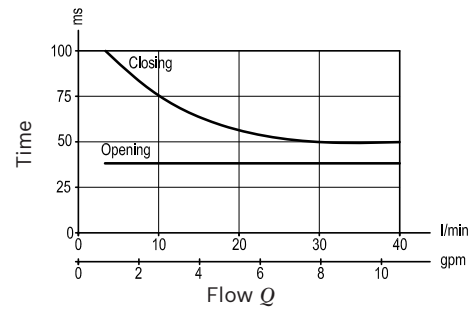
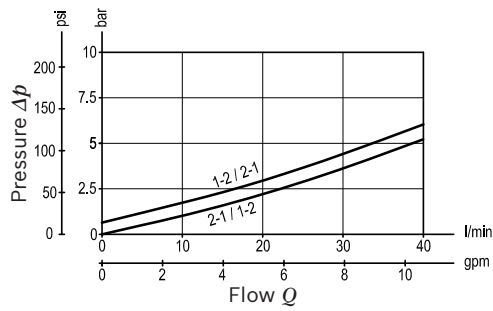
Type	Material number
OD1501183AS000	R901091096
OD1501183DS000	R901091101
OD1503183AS000	R934000779
OD1503183AS800	R934003063
OD1503183DS000	R901091112
OD1503183DS800	R934003064
OD1505183AS000	R901083058
OD1505183AS800	R934003080

Type	Material number
OD1505183DS000	R901087979
OD1509183AS000	R901091150
OD1509183DS000	R901091151
OD1531183AS000	R901082015
OD1531183AS800	R934000104
OD1531183DS000	R901091164

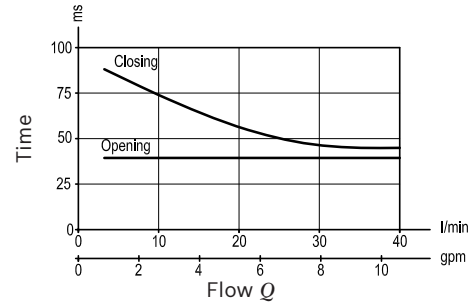
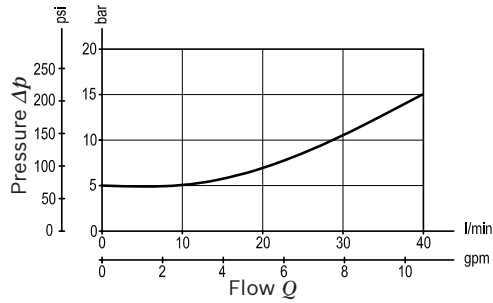
## Characteristic curves

## Version 1 – Version 2

Standard

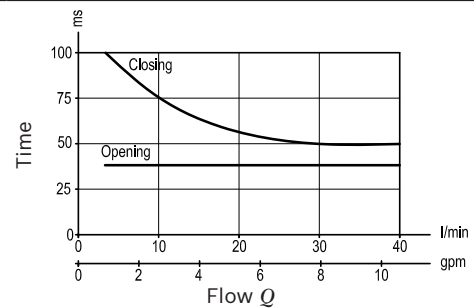
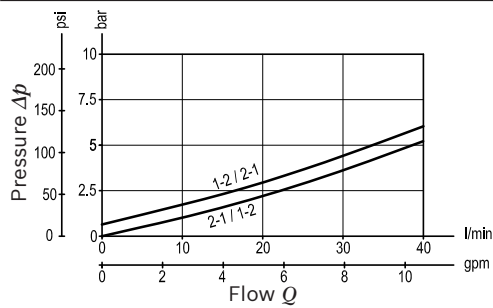


Extra spring

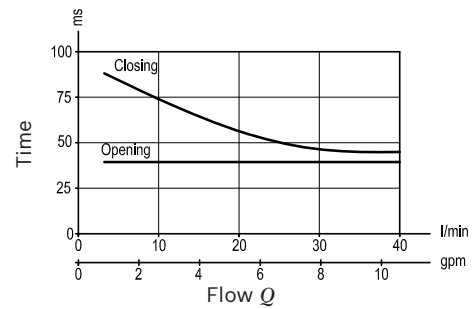
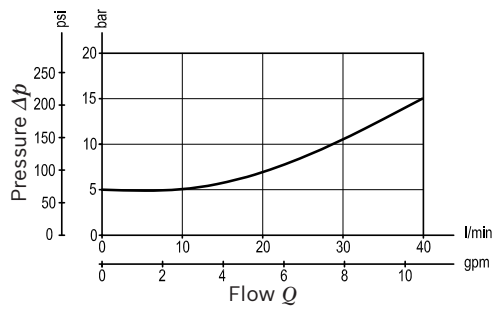


## Version 3

Standard

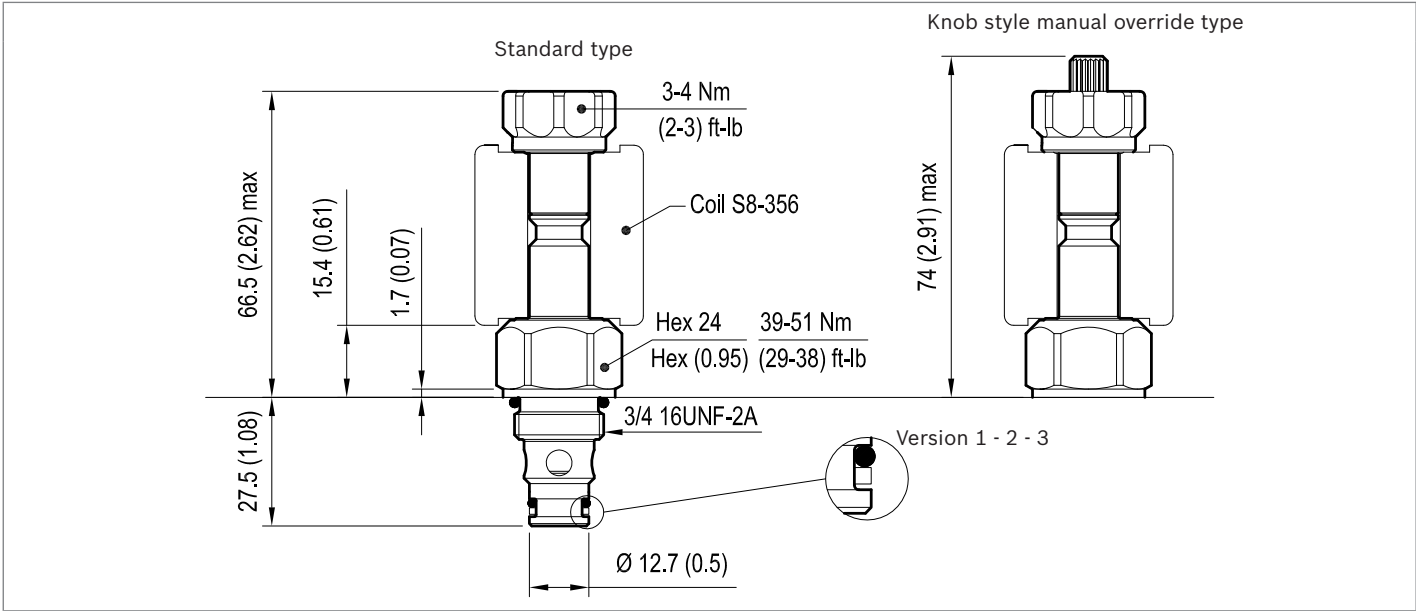


Extra spring



**Dimensions**

▼ **Version 1: Solenoid operated valve, poppet 2-way normally closed**



▼ **Version 2: Solenoid operated valve, poppet 2-way normally closed**

▼ **Version 3: Solenoid operated valve, poppet 2-way double lock normally closed**

