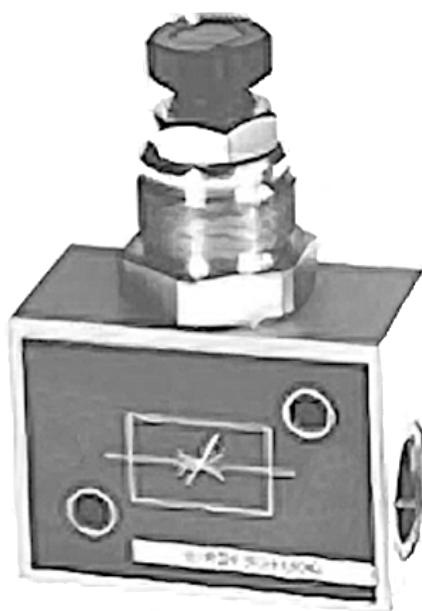


Flow and check valves ► Throttle valves




Series CH01

Brochure



Flow and check valves ▶ Throttle valves

Series CH01

	Series CH01 ▶ Qn = 38 - 2800 l/min ▶ Internal thread - Internal thread	3
Accessories		
	Protective cap	5
	Hexagonal nut for panel installation	5

Flow and check valves ► Throttle valves

Series CH01

► Qn = 38 - 2800 l/min ► Internal thread - Internal thread



IM0045748

Working pressure min./max.
Ambient temperature min./max.
Medium temperature min./max.
Medium

0 bar / 10 bar
+0°C / +80°C
+0°C / +80°C
Compressed air

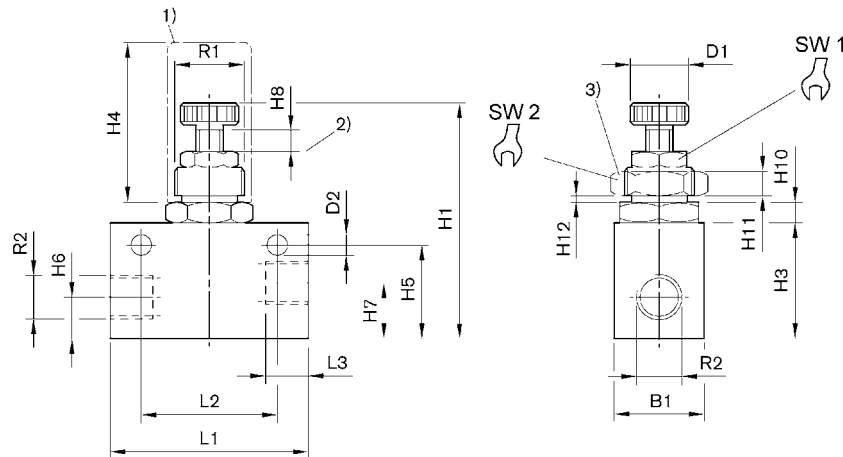
Materials:
Housing
Seals
Flow control screw

Aluminum, anodized
Acrylonitrile Butadiene Rubber
Steel, galvanized

	Port 1	Port 2	Throttle bore	Qn	Weight	Fig.	Part No.
			[mm]	[l/min]	[kg]		
	G 1/8	G 1/8	1	38	0.035	Fig. 1	0821201010
	G 1/8	G 1/8	2	140	0.035	Fig. 1	0821201004
	G 1/4	G 1/4	4	700	0.045	Fig. 1	0821201011
	G 1/2	G 1/2	8.5	2800	0.17	Fig. 2	0821201006

Nominal flow Qn at 6 bar and $\Delta p = 1$ bar

Fig. 1



00109092

1) protective cap 2) throttle setting range 3) nut for control panel installation

Part No.	Port G	R1	R2	B1	D1	D2	H1	H3	H4	H5	H6
0821201010	G 1/8	M12x1	G 1/8	16	9,8	4,5	56	20	35	16,5	8
0821201004	G 1/8	M12x1	G 1/8	16	9,8	4,5	56	20	35	16,5	8
0821201011	G 1/4	M20x1,5	G 1/4	25	15	5,5	70	32	40	26	11

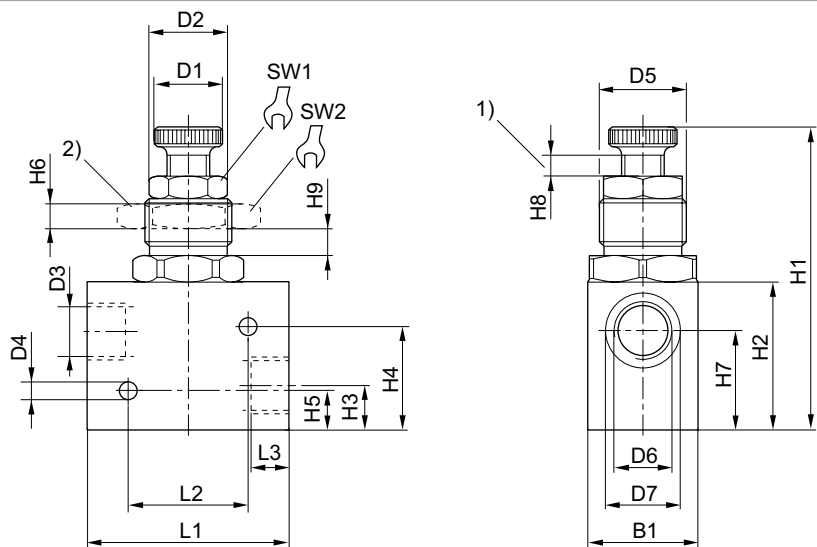
Part No.	H7	H8	H10	H11	H12	L1	L2	L3	SW1	SW2	Delivery quantity Piece	Weight kg
0821201010	8	4	4,2	4	0	35	25	8	10	17	1	0.035

Series CH01

► Qn = 38 - 2800 l/min ► Internal thread - Internal thread

Part No.	H7	H8	H10	H11	H12	L1	L2	L3	SW1	SW2	Delivery quantity Piece	Weight kg
0821201004	8	4	4,2	4	0	35	25	8	10	17	1	0.035
0821201011	15	5	5.5	6	0	55	38	12	13	24	1	0.045

Fig. 2



1) throttle setting range 2) nut for control panel installation

Part No.	Port G	D1	D2	D3	D4	D5	D6	D7	B1	H1	H2	H3
0821201006	G 1/2	27	27.5	19	6.5	M32x1,5	G1/2	27	40	120	50	17

Part No.	H4	H5	H6	H7	H8	H9	L1	L2	L3	SW1	SW2	Delivery quantity Piece
0821201006	40.5	15.5	9	38	8	9	75.3	45	14	24	46	1

[illegible]

